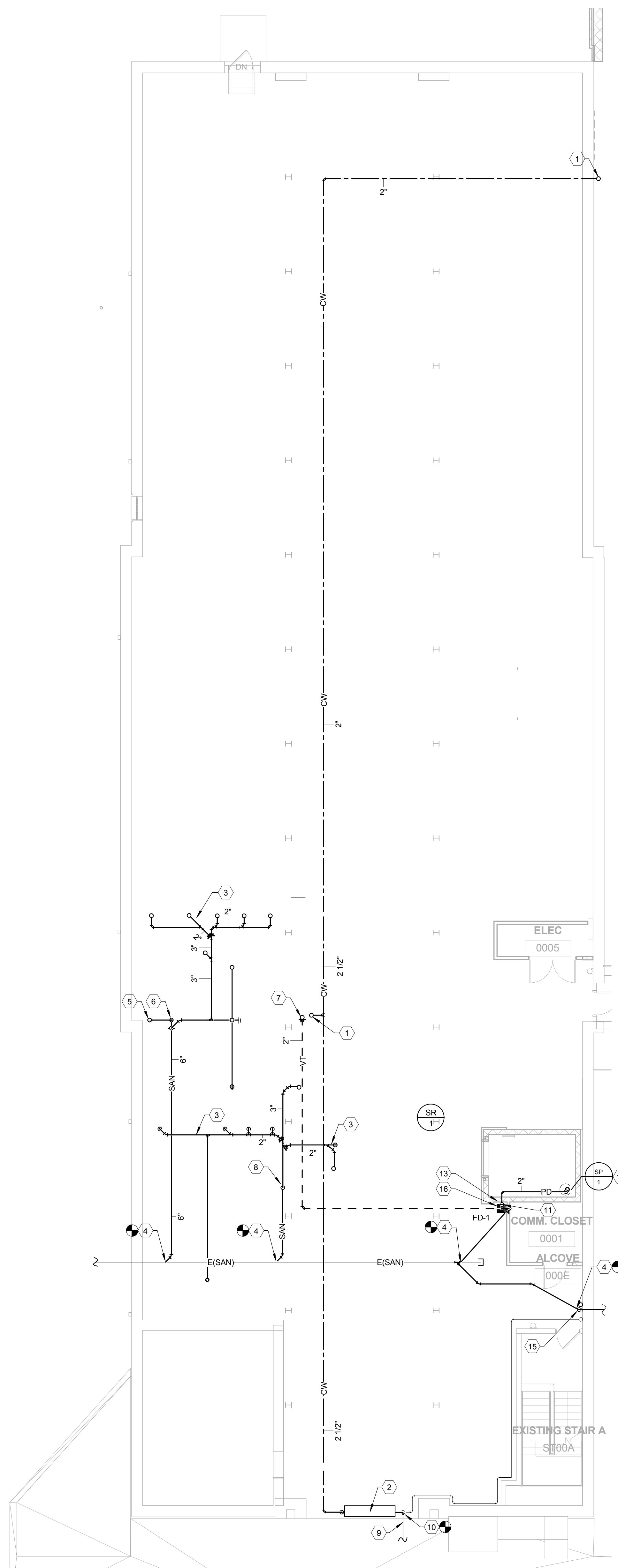


PLUMBING DESIGN BASEMENT PLAN - ALTERNATE
 ② 1/8" = 1'-0"



PLUMBING DESIGN BASEMENT PLAN - BASE BID
 ① 1/8" = 1'-0"

P3.0 GENERAL NOTES
 A. CUT THE EXISTING CONCRETE FLOOR SLAB AS REQUIRED TO INSTALL NEW BELOW SLAB PLUMBING PIPING. PATCH AND REPAIR THE FLOOR SLAB TO MATCH THE EXISTING FLOOR SLAB.

- PLUMBING DESIGN BASEMENT PLAN TAGGED NOTES (X)
- 1 2-1/2" COLD WATER LINE UP. REFER TO PLAN SHEET P3.1 FOR CONTINUATION.
 - 2 DOMESTIC WATER ENTRANCE. REFER TO PIPING SCHEMATIC FOR DETAIL.
 - 3 SANITARY SEWER PIPING IN CEILING SPACE SERVING THE PLUMBING FIXTURES ON FIRST FLOOR.
 - 4 CONNECT TO EXISTING SANITARY BELOW FLOOR SLAB. FIELD VERIFY EXACT LOCATION AND DEPTH.
 - 5 6" SANITARY UP. REFER TO SHEET P3.1 FOR CONTINUATION.
 - 6 6" SANITARY DOWN TO BELOW FLOOR SLAB.
 - 7 2" VENT UP. REFER TO SHEET P3.1 FOR CONTINUATION.
 - 8 3" SANITARY DOWN TO BELOW FLOOR SLAB.
 - 9 EXISTING WATER LINE SHALL REMAIN.
 - 10 CONNECT TO EXISTING WATER LINE AT FLOOR PENETRATION. REFER TO PIPING SCHEMATIC.
 - 11 2" FORCE UP TO ABOVE CEILING.
 - 12 REFER TO ELEVATOR SCHEMATIC SHEET P4.0.
 - 13 ELEVATOR SUMP DISCHARGE DOWN TO 3" A.F.F. FIELD VERIFY.
 - 14 COORDINATE FLOOR DRAIN LOCATIONS WITH RELOCATED HVAC UNITS. FIELD VERIFY.
 - 15 EXISTING 6" SANITARY LINE DOWN TO BELOW FLOOR SLAB.
 - 16 ELEVATOR PUMP DISCHARGE SHALL BE INDIRECTLY CONNECTED TO FLOOR DRAIN