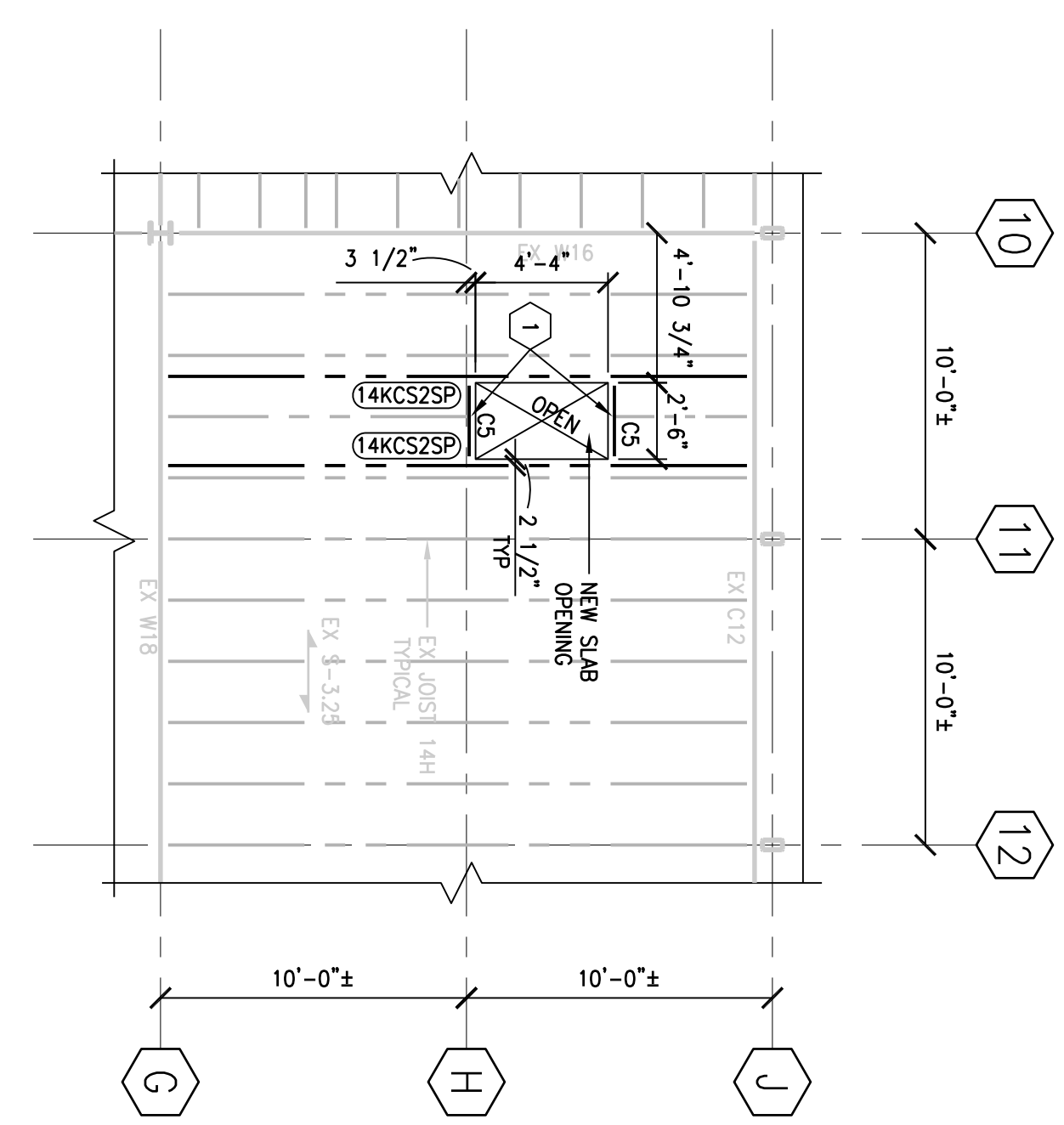
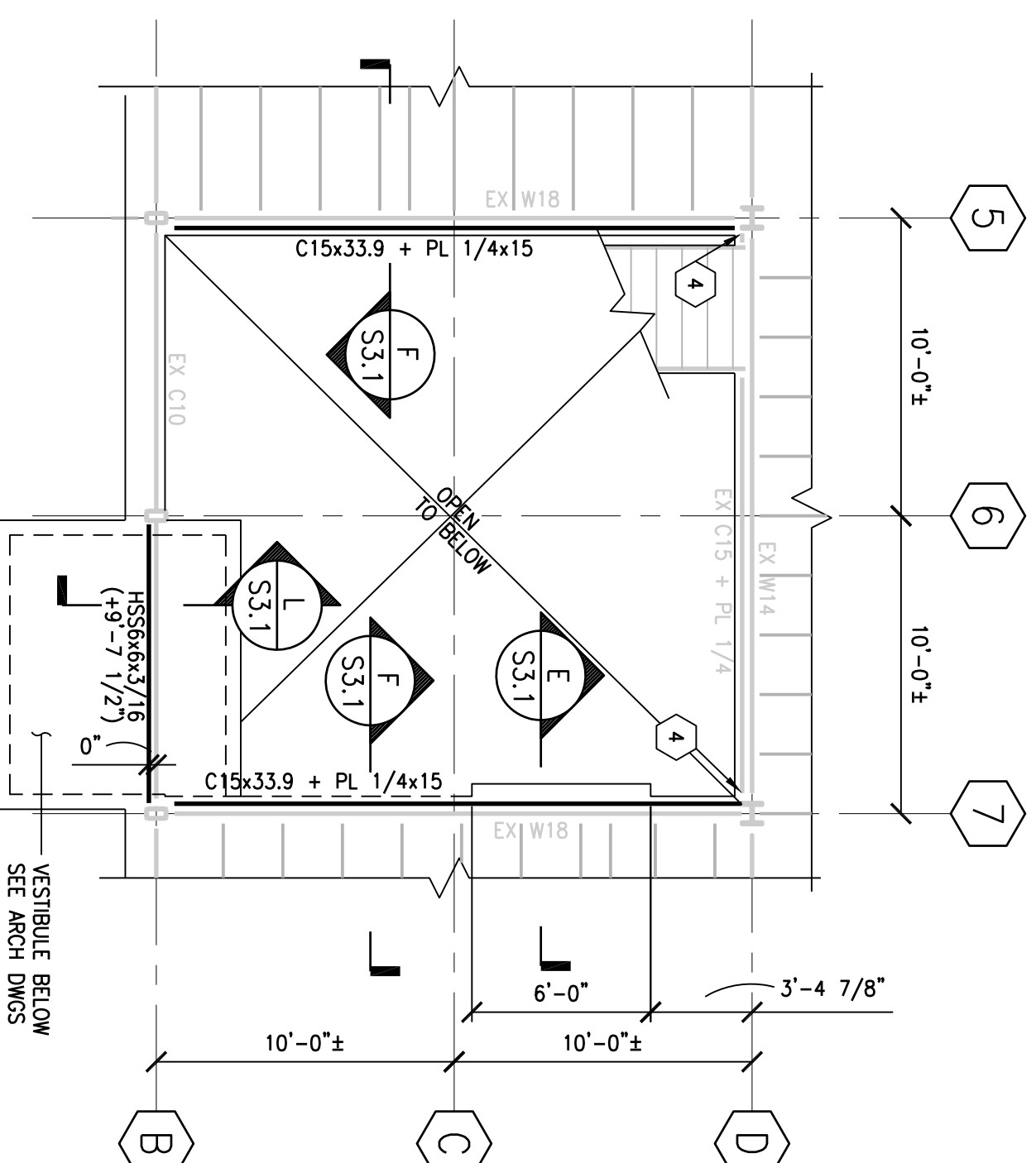


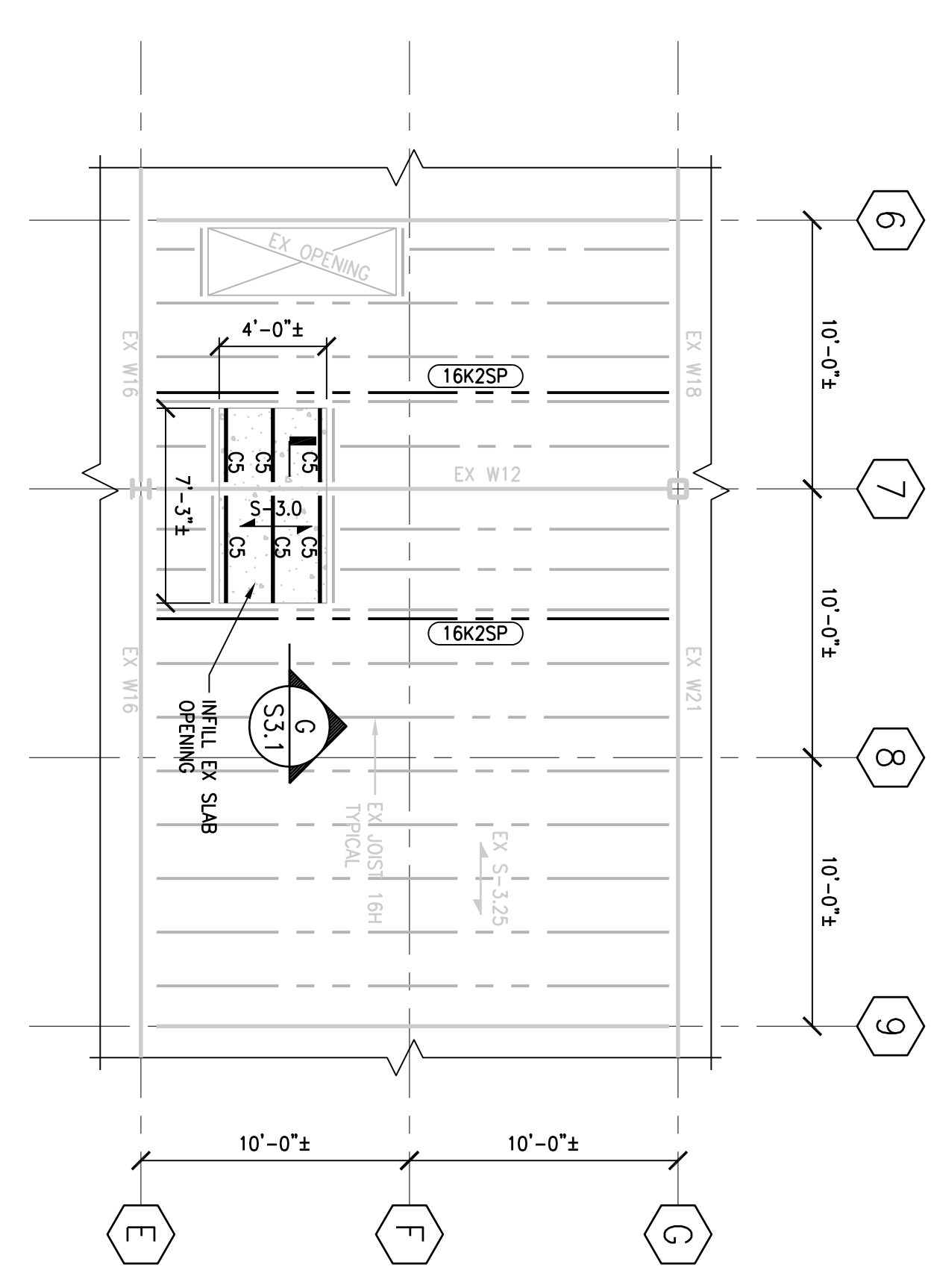
PARTIAL BASEMENT PLAN



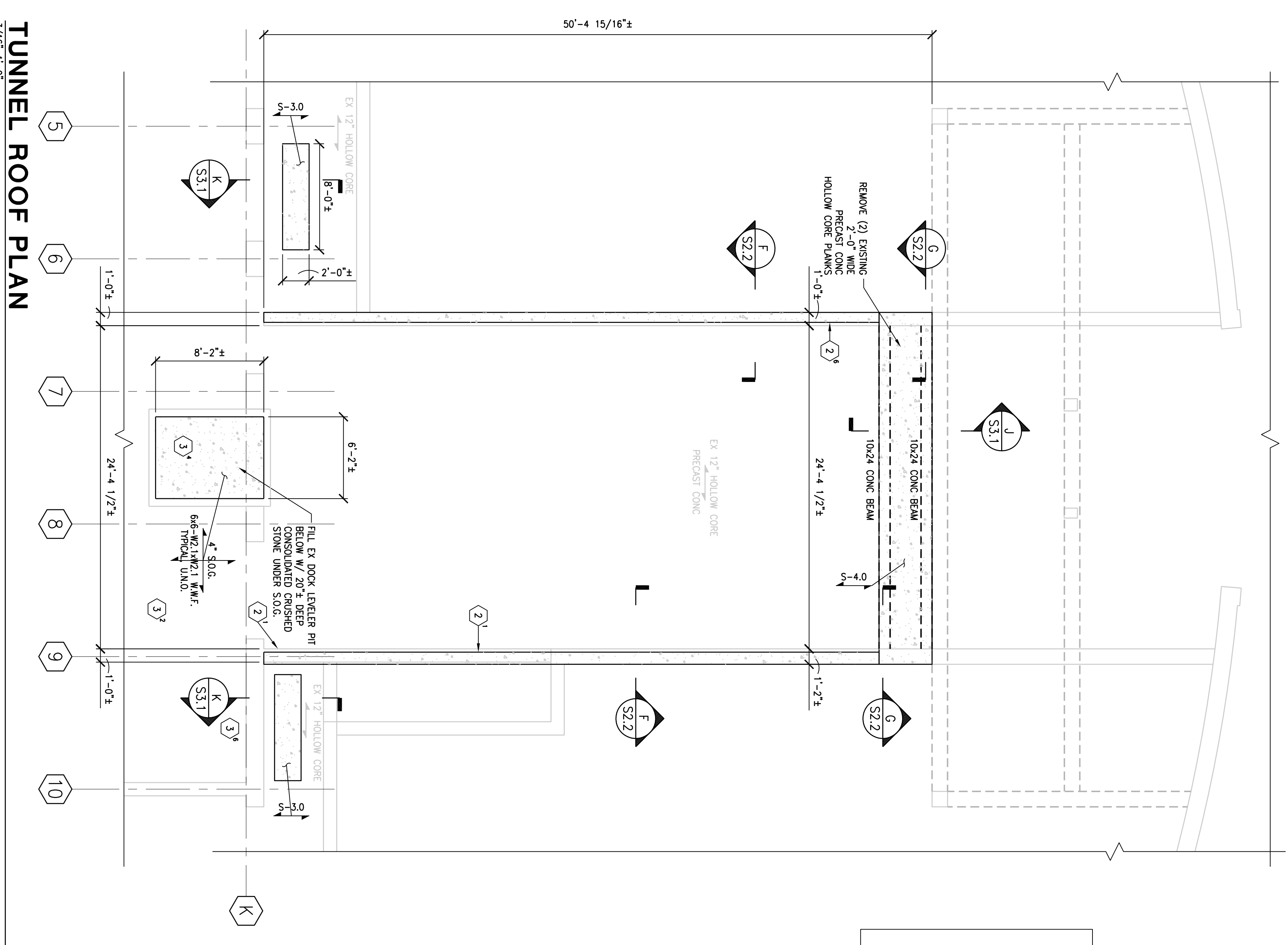
PARTIAL SECOND FLOOR FRAMING PLAN



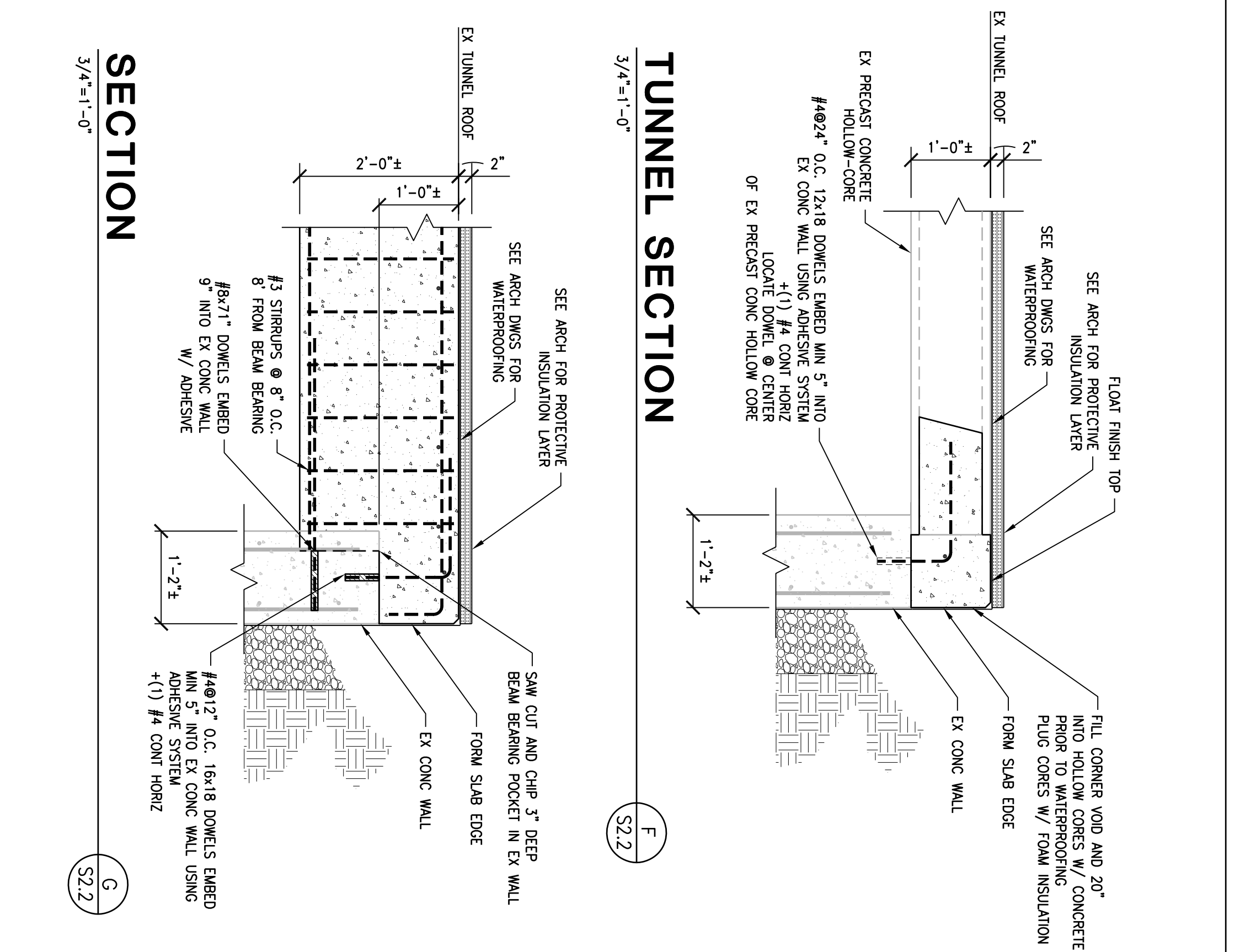
PARTIAL SECOND FLOOR FRAMING PLAN



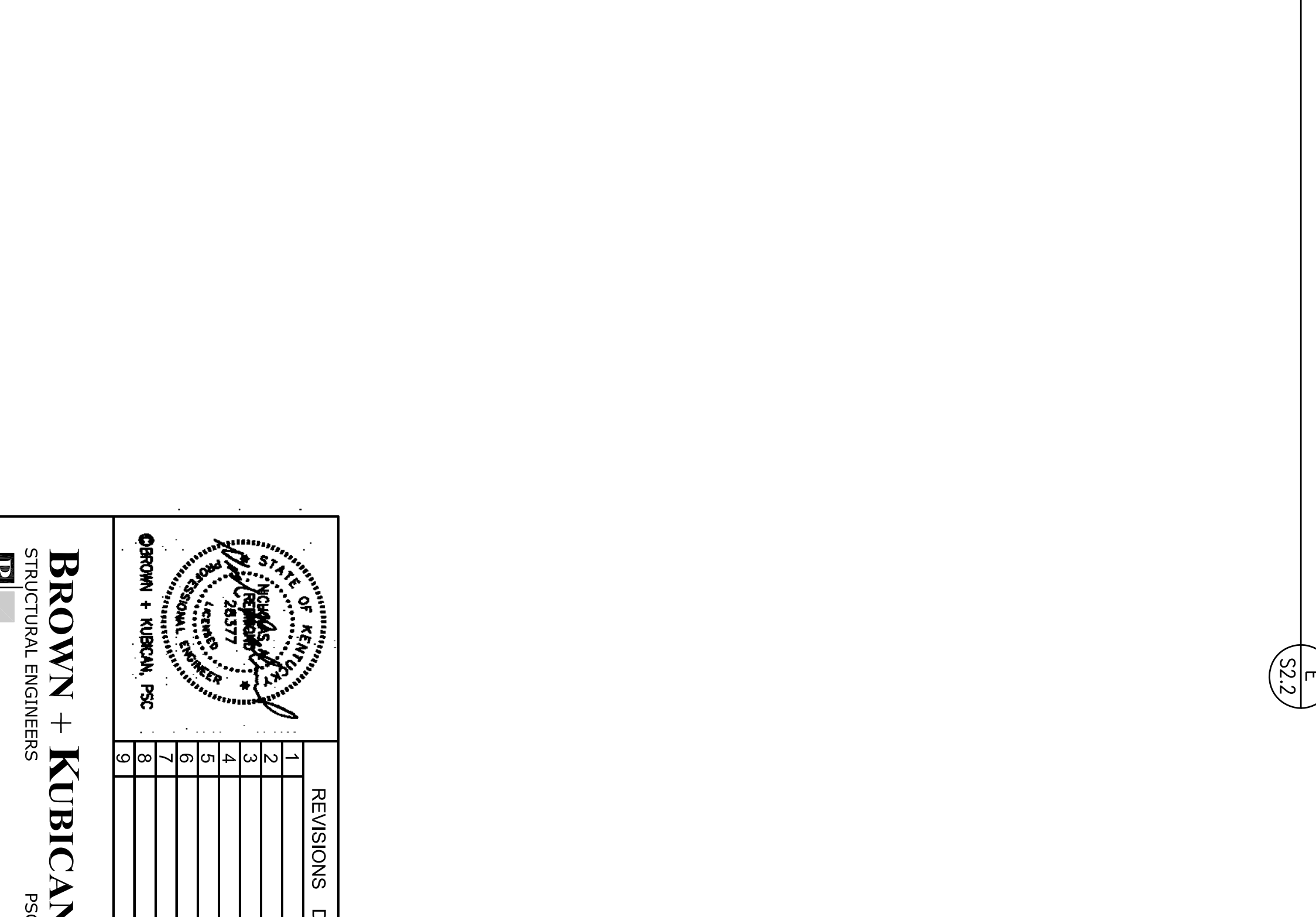
PARTIAL PENTHOUSE PLAN



TUNNEL ROOF PLAN



SECTION



TUNNEL SECTION

ITEM #	DESCRIPTION	QUANTITY ESTIMATE	UNIT
1.	VERTICAL CONCRETE SPALL REPAIRS AT BEAMS AND WALLS	15	SF
2.	OVERHEAD CONCRETE SPALL REPAIR AT CONCRETE FLOOR SLABS	18	SF
TOTAL		33	

SCHEDULE OF REPAIRS

CONCRETE REPAIR WORK SCOPE

THE CONCRETE REPAIRS INCLUDE THE REPAIR OF APPROXIMATELY 6 LOCATIONS OF SPALLED CONCRETE WITH CONCRETE REPAIR MORTAR. THE BASIS OF PAYMENT FOR THIS CONCRETE REPAIR WORK WILL BE AS FOLLOWS:

1. PROVIDE UNIT COST AS WELL AS BASE BID LUMP SUM COST. THE UNIT PRICE GIVEN IN THE UNIT PRICE SCHEDULE IS REQUIRED TO EQUAL THE LUMP SUM AMOUNT FOR THAT WORK DIVIDED BY THE BID QUANTITIES.
2. PAYMENT WILL BE ADJUSTED FROM THE BASE BID BASED ON UNIT COST MULTIPLIED BY THE AMOUNT OF WORK PERFORMED IN EXCESS OR LESS THAN THAT OF THE BASE BID AMOUNT.
3. THE PROCESS USED TO DETERMINE THE AREAS REQUIRING REPAIR WILL BE AS FOLLOWS:
 - 3.a. THE CONTRACTOR IS TO SOUND AND MARK ALL LOCATIONS WHERE REPAIRS ARE TO BE PERFORMED. THE MEASUREMENT IS TO BE TAKEN IN SQUARE INCHES, DIVIDED BY 144 TO CONVERT TO SQUARE FEET WITH THE MINIMUM REPAIR AREA AT EACH LOCATION TO BE 1 SQUARE FOOT.
 - 3.b. THE CONTRACTOR IS TO VERIFY THESE LOCATIONS AND TOTAL MEASURED QUANTITIES WITH THE E.O.R. PRIOR TO PERFORMING THE WORK.

PLAN NOTES

1. ELEVATIONS SHOWN ARE TO THE TOP OF STEEL AND ARE REFERENCED FROM FINISHED FIRST FLOOR REFERENCE ELEVATION 100'-0".
2. SEE DMS 51.0 FOR GENERAL NOTES AND TYPICAL FOUNDATION DETAILS.
3. SEE DMS 53.1 FOR TYPICAL FRAMING DETAILS.
4. CONCRETE SPALLS TEMPORARILY REINFORCED AND BRACED AS PART OF THE BASE BID. ALL EXISTING UTILITIES (INCLUDING BUT NOT LIMITED TO ELECTRICAL CONDUIT, FIRE PROTECTION, GAS SUPPLY LINES, ETC.) WHICH INTERFERE WITH INSTALLATION OF NEW WORK.
5. SLAB ON GRADE SHALL BE PLACED ON 10 ML POLYETHYLENE VAPOR BARRIER OVER 4" MINIMUM COMPACTED CRUSHED STONE OR DENSE GRADED AGGREGATE.

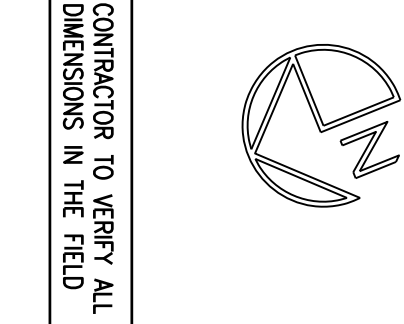
TAG NOTES

- ① = SHORE AND CUT EXISTING JOIST. REINFORCE PER DET D/S3.1.
- ② = VERTICAL CONCRETE SPALL REPAIR. # INDICATES NO. OF SQUARE FEET. SEE DET A/S3.1.
- ③ = OVERHEAD CONCRETE SPALL REPAIR. # INDICATES NO. OF SQUARE FEET. SEE DET A/S3.1.
- ④ = WHERE EXPOSED IN THE FINISHED STRUCTURE, W/TH EXISTING C10 AND NEW C10, BOTH WELD AND GRIND SMOOTH.

LEGEND

- 5-3.0 = 2 1/2" NORMAL WEIGHT CONCRETE REINFORCED W/ 6#-@12" W/2.1 W/RF. ON 9/16" 24 GA GALVANIZED NON-CORROSIPE STEEL FORM DECK (3" TYPICAL THICKNESS).
- 5-4.0 = 4" NORMAL WEIGHT CONCRETE REINFORCED W/ #4@12" O.C. EN. 60TYPAL. SEE DET U/S3.1.
- ① = MANDATORY NEW SLAB CONSTRUCTION. NEW SLAB ON GRADE COORDINATE SUCH WORK W/ MEP DRAWINGS AND HIS SUBORDINATIONS.
- (Z)XSP = STANDARD S4 JOIST W/ BELTED SPACE BEAR W/SPAN. FITS TIGHT TO DECK. SLICE DESIGNED AND DETAIL BY JOIST MANUFACTURER. JOIST TOP CHORD SHALL BE ORDERED FOR 3/16" 6 PELTS THROUGH ANGLE. TOP CHORD AND SCREW JOIST TO EXISTING DECK (FROM UNDERSIDE) W/ #12 SELF-DRILLING SCREWS @ 12" O.C. OR TO EXISTING CONCRETE FLOOR (FROM UNDERSIDE) W/ 2" DIA. ANCHOR BOLTS @ 12" O.C. REMOVE AND REINSTALL EXISTING BRACING FOR JOIST INSTALLATION. ALL BRACING TO BE CONTINUOUS AND UNBROKEN. COORDINATE JOIST PROFILE WITH DEFLECTED SHAPE OF EXISTING MEP TRUSS SUCH AS CONDUIT AND RECONNECT THEM AS PART OF THIS CONTRACT.

<p>BROWN + KUBICAN STRUCTURAL ENGINEERS PSC</p> <p>2224 Young Drive Frankfort, KY 40601 Phone: 502-544-4093 Fax: 502-544-0733</p>		<p>REVISIONS DATE</p> <table border="1"> <tr><td>1</td><td></td></tr> <tr><td>2</td><td></td></tr> <tr><td>3</td><td></td></tr> <tr><td>4</td><td></td></tr> <tr><td>5</td><td></td></tr> <tr><td>6</td><td></td></tr> <tr><td>7</td><td></td></tr> <tr><td>8</td><td></td></tr> <tr><td>9</td><td></td></tr> </table>	1		2		3		4		5		6		7		8		9	
1																				
2																				
3																				
4																				
5																				
6																				
7																				
8																				
9																				
<p>AGENCY: COUNCIL OF STATE GOVERNMENTS - HEADQUARTERS BUILDING</p> <p>APPROVED FOR PROBABAL CONCEPT ONLY</p> <p>DATE: _____</p>	<p>RECORD DATE: _____</p> <p>DESIGNED BY: SCB</p> <p>CHECKED BY: SCB</p> <p>A & E FILE NO: 13013.01</p> <p>NOV 2013</p>	<p>DRAWING NO: S-2.2</p> <p>REVIEWED BY: SCB</p> <p>ENGR FILE NO: _____</p> <p>REVISIONS: _____</p>																		



CONTRACTOR TO VERIFY ALL DIMENSIONS IN THE FIELD