

SINK SCHEDULE

DESIGNATION	MATERIAL / DESCRIPTION	LENGTH	WIDTH	DEPTH	REMARKS
SK1	STAINLESS STEEL	24"	18"	10"	MAIN LAB
SK2	STAINLESS STEEL	24"	15"	10"	ALCOVE
SK3	STAINLESS STEEL	24"	15"	10"	PROCEDURE ROOM
SK4	STAINLESS STEEL	24"	20"	12"	VIVARIUM PROCEDURE

FIXTURE SCHEDULE:

DESIGNATION	DESCRIPTION	HANDLE COLOR	FINISH	DISC COLOR	MANUFACTURER	MOD. No.	REMARKS
DECK MTD.	HW/CW	MIXING FAUCET W/ VACUUM BREAKER & SWING GOOSENECK	GRAY	SATIN CHROME	RED/GREEN	WATERSAVER	CT4414VB
	RGW	PURE WATER FAUCET W/ SELF-CLOSING CONTROL	GRAY	SATIN CHROME	WHITE	WATERSAVER	CT7853-SC
	EW	EYE / FACE WASH FIXTURE W/ VAC BREAKER/BACKFLOW PREVENTER		SATIN CHROME		WATERSAVER	CTFE774
	CW	FAUCET W/ VACUUM BREAKER GOOSENECK	GRAY	SATIN CHROME	GREEN	WATERSAVER	CT3914VB
	DH	EYEWASH/DRENCH HOSE UNIT, DECK MOUNTED, WITH BACKFLOW PREVENTER		SATIN CHROME		WATERSAVER	CTEW1022BP
PANEL MTD.	A2,V2,C02,N2,O2	BALL VALVE		SATIN CHROME	ORANGE, YELLOW, PINK	WATERSAVER	CT4200
	G2	BALL VALVE (LIFT & TURN HANDLE)	BLUE	SATIN CHROME	BLUE	WATERSAVER	CT4260
BENCH MTD.	A4,V4	STRAIGHT PATTERN NEEDLE VALVE	BLACK	SATIN CHROME	ORANGE, YELLOW, PINK	WATERSAVER	INV010-16-14BV-141EDI
	G4	STRAIGHT PATTERN NEEDLE VALVE	BLACK	SATIN CHROME	BLUE	WATERSAVER	INV010-16-14BV-141EDI
ADA	HW/CW	MIXING FAUCET W/ VACUUM BREAKER GOOSENECK	GRAY	SATIN CHROME	RED / GREEN	WATERSAVER	CT74414VB.BH
	SS	SAFETY SHOWER			N/A	WATERSAVER	ESBF672

BIOLOGICAL SAFETY CABINET SCHEDULE

TAG	TYPE	SIZE	WORK SURFACE	LINER & BAFFLE	SERVICES	SASH	CONNECTION	REMARKS
<BSC4A2>	CLASS II, A2	4'-6" WIDE	STAINLESS STEEL	STAINLESS STEEL	SEE PLANS	VERTICAL		INCLUDE ADJUSTABLE LEG STAND
<BSCPTCE>	CLASS II, A2	5'-6" WIDE	STAINLESS STEEL	STAINLESS STEEL	SEE PLANS	VERTICAL	THIMBLE	WITH INTERCHANGE BOX AND CANOPY EXHAUST
<ATS1>	CLASS II, A2	4'-0" WIDE	STAINLESS STEEL	STAINLESS STEEL	SEE PLANS	VERTICAL		ANIMAL TRANSFER STATION

NOTES:
1. SEE PLANS FOR REQUIRED M/E/P SERVICES.

EQUIPMENT SCHEDULE

EQUIP. TAG	MATERIAL / DESCRIPTION	REMARKS
<BD>	BEDDING DISPENSER	SEE SPECIFICATIONS
<BDS>	BEDDING DUMP STATION	SEE SPECIFICATIONS
<BFS>	BOTTLE FILLER	SEE SPECIFICATIONS
<CDC>	CAGE DECONTAMINATION CHAMBER	SEE SPECIFICATIONS
<CDG>	PORTABLE CHLORINE DIOXIDE GENERATOR	SEE SPECIFICATIONS
<CRW>	CAGE & RACK WASHER	SEE SPECIFICATIONS
<DP>	DECONTAMINATION PORT	SEE SPECIFICATIONS
<FFI>	FLEXIBLE FILM ISOLATORS	SEE SPECIFICATIONS
<LST1>	LARGE STEAM STERILIZER	SEE SPECIFICATIONS
<MWS>	MOBILE WORK STATION	SEE SPECIFICATIONS
<RAEKT>	MOUSE RACK	SEE SPECIFICATIONS
<ST3>	STEAM STERILIZER	SEE SPECIFICATIONS
<WP>	WATER PROPORTIONER	SEE SPECIFICATIONS
<WD>	WASHER /DRYER	SEE SPECIFICATIONS, OWNER FURNISHED CONTRACTOR INSTALLED

O.F.O.I EQUIPMENT SCHEDULE

EQUIP. TAG	MATERIAL / DESCRIPTION	REMARKS
<EQ1>	NOT USED	
<EQ2>	CO2 INCUBATORS	
<EQ3>	REFRIGERATOR/ FREEZER	
<EQ4>	DESKTOP COMPUTER	
<EQ5>	LN2 STORAGE	
<EQ6>	LN2 DEWAR	
<EQ7>	ANESTHESIA MACHINE	
<EQ8>	REFRIGERATOR	
<EQ9>	SCOPE(DISSECTING)	

NIH GRANT NO. 1G20RR031064-01

UNIVERSITY OF KENTUCKY- Renovate 4th Floor Sanders Brown Center
EQUIPMENT AND FIXTURE SCHEDULES

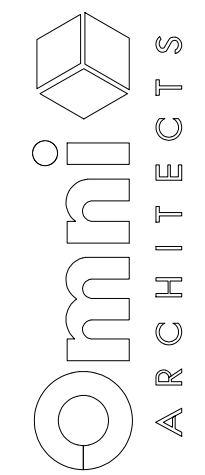
Project Number 1005.00

Date November, 2011

Drawn By MGR

Checked By DB

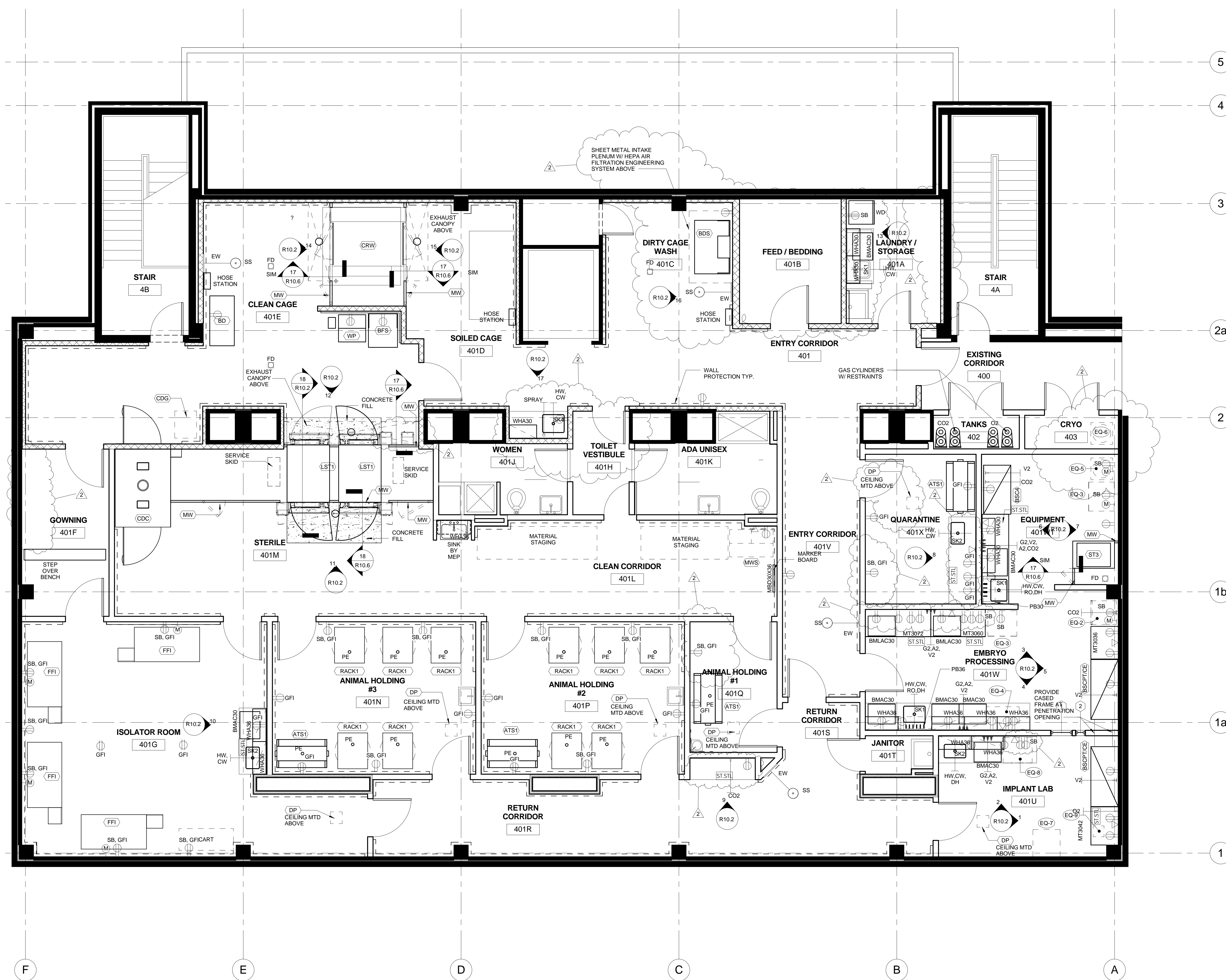
Scale 1/4" = 1'-0"



212 North Upper Street
Lexington, Kentucky 40507-1001
p 859.252.6664 f 859.253.2358
www.omniarchitects.com

This Drawing and the Design shown here are the property of Omni Architects, Inc. The reproduction, copying or other use of this Drawing or Design without the written consent of Omni Architects is prohibited.

NIH REVIEW
R00.1



1 FOURTH FLOOR EQUIPMENT PLAN
SCALE: 1/4" = 1'-0"

NIH GRANT NO. 1G20RR031064-01

UNIVERSITY OF KENTUCKY - Renovate 4th Floor Sanders Brown Center
FOURTH FLOOR EQUIPMENT PLAN

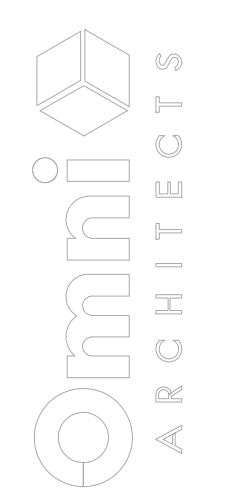
NIH REVIEW

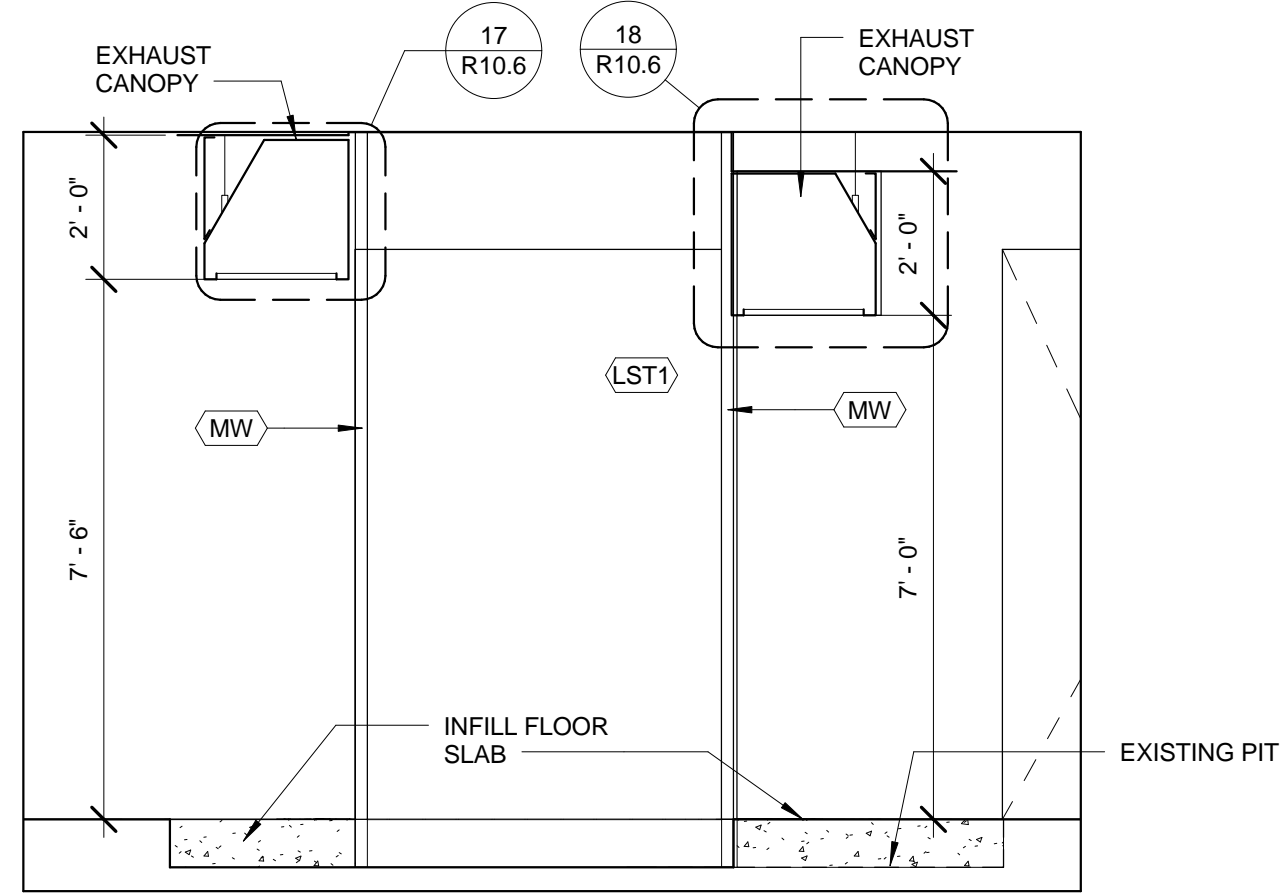
R10.1

Scale 1/4" = 1'-0"

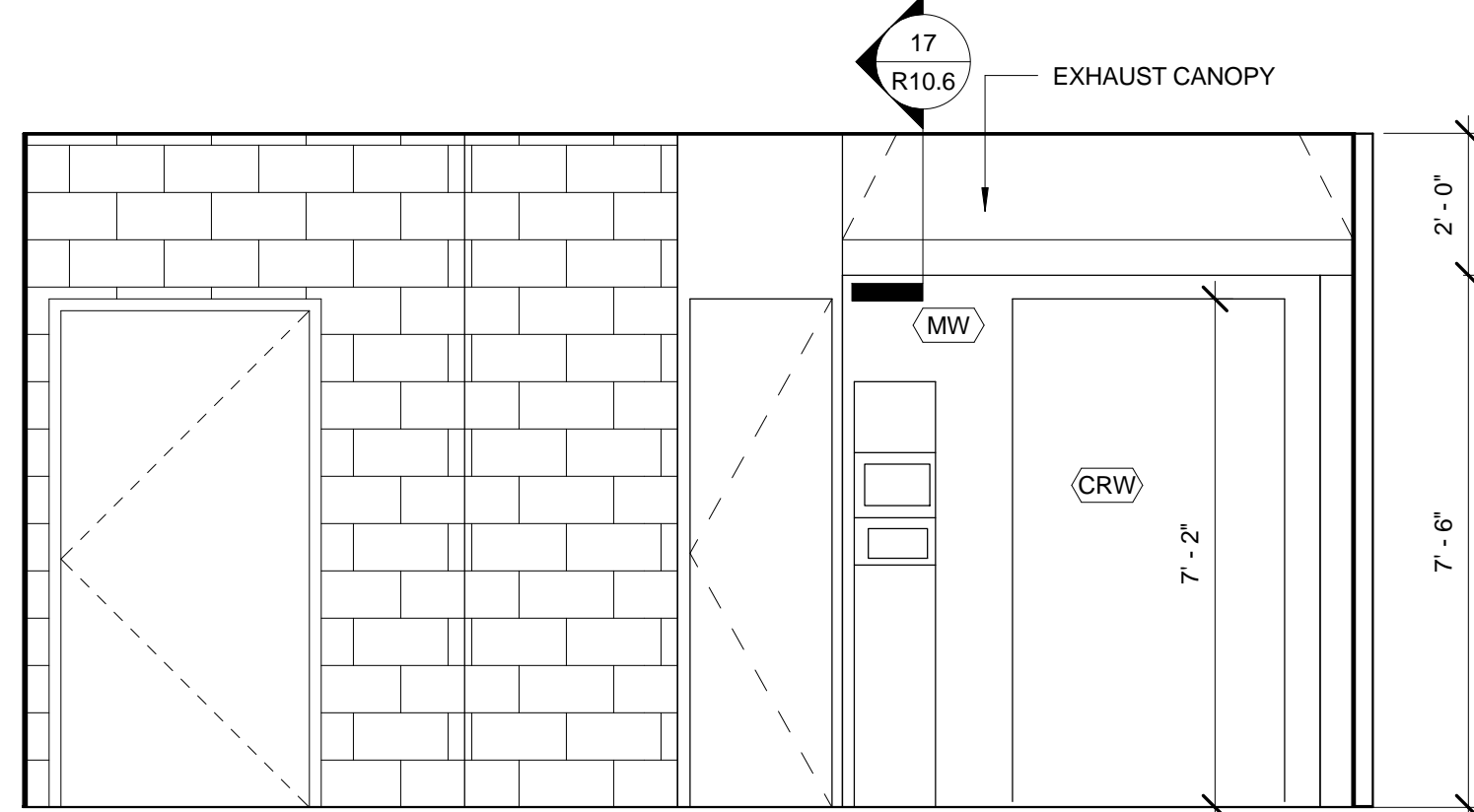
Project Number 1005.00 Date November, 2011 Drawn By MGR Checked By DB
This Drawing and the Design shown hereon are the property of Omni Architects & Architects. The reproduction, copying or other use of this Drawing or Design without the written consent of Omni Architects is prohibited.

212 North Upper Street
Lexington, Kentucky 40507-1001
p 859.252.6664 f 859.253.2358
www.omniarchitects.com

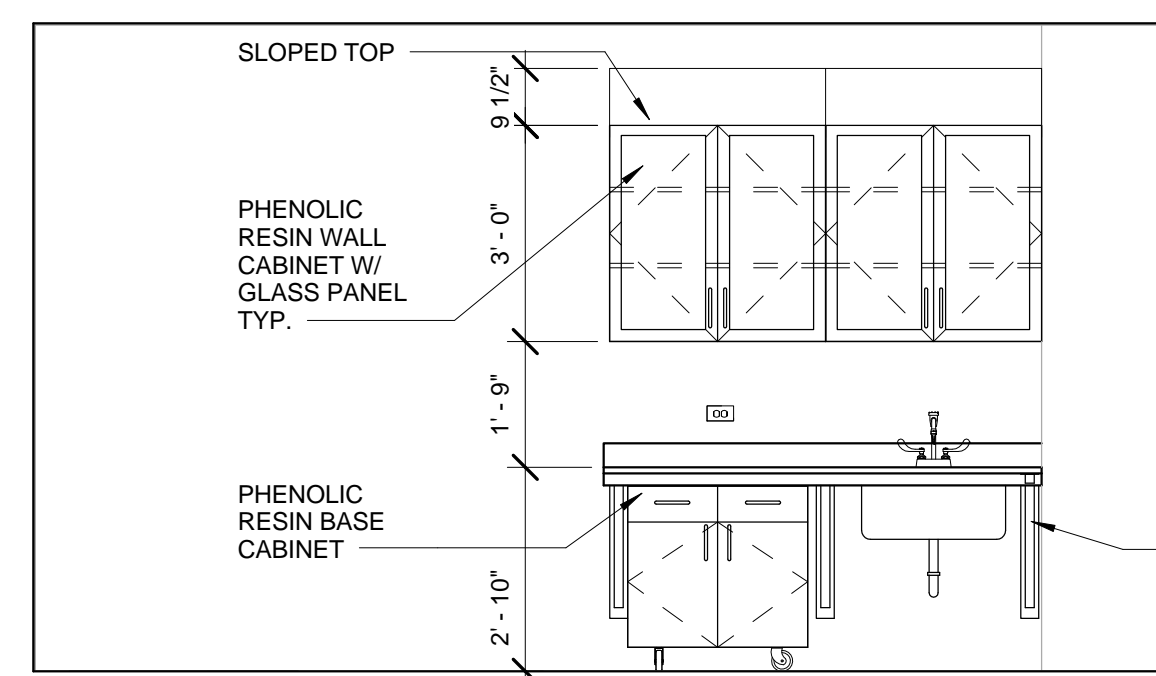




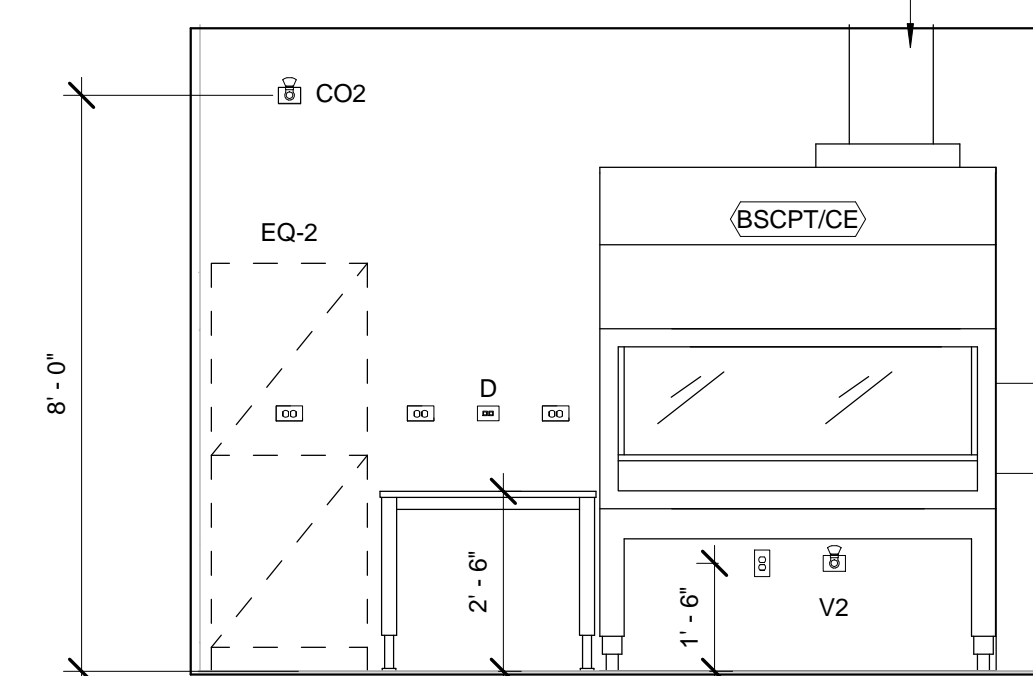
18 SECTION THRU STERILIZER IN EXISTING PIT
SCALE: 3/8" = 1'-0"



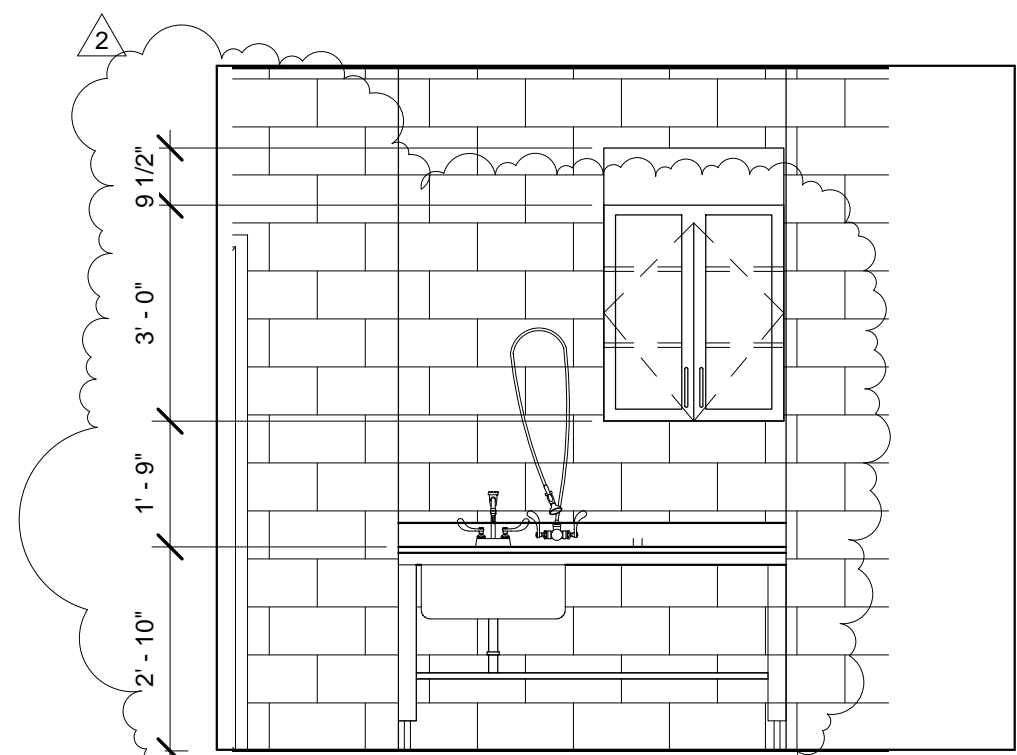
15 SOILED CAGE 401D
SCALE: 3/8" = 1'-0"



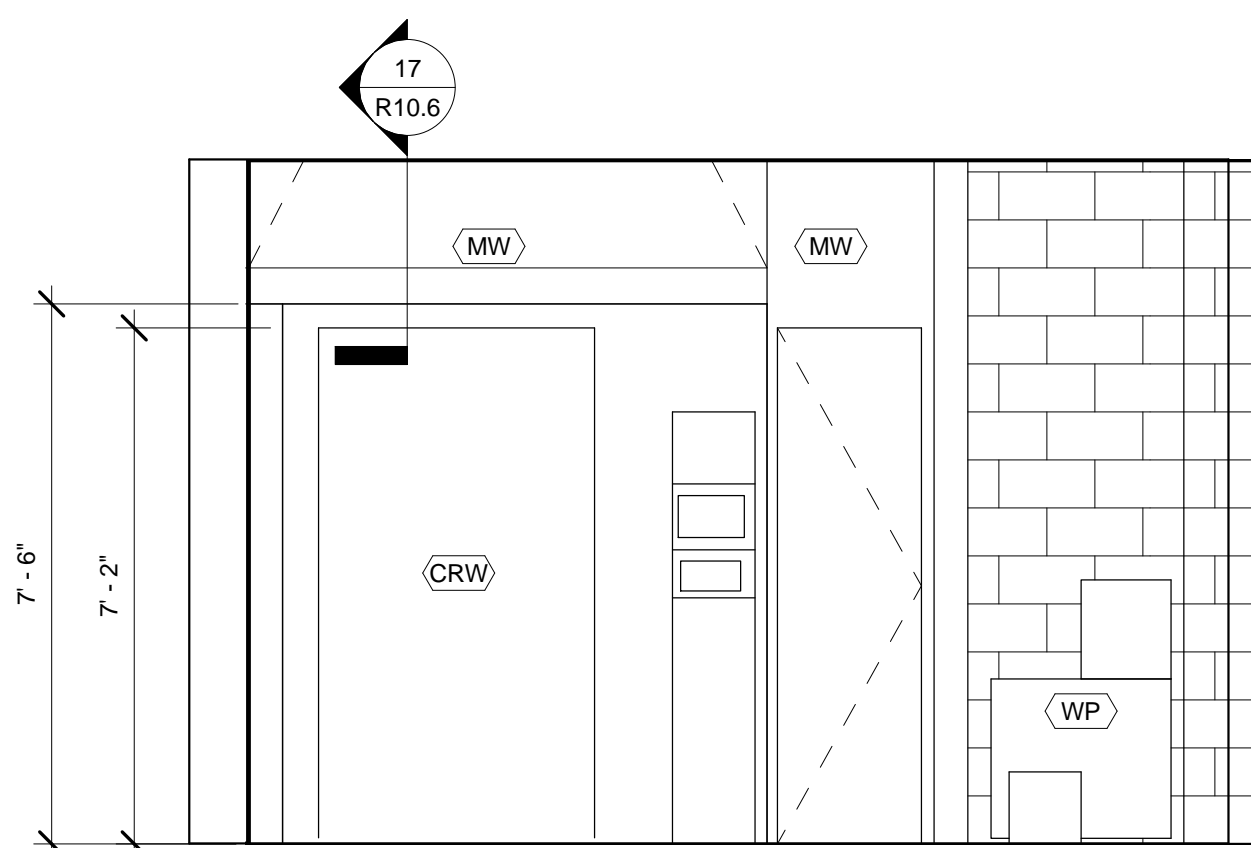
10 ISOLATOR ROOM 401G
SCALE: 3/8" = 1'-0"



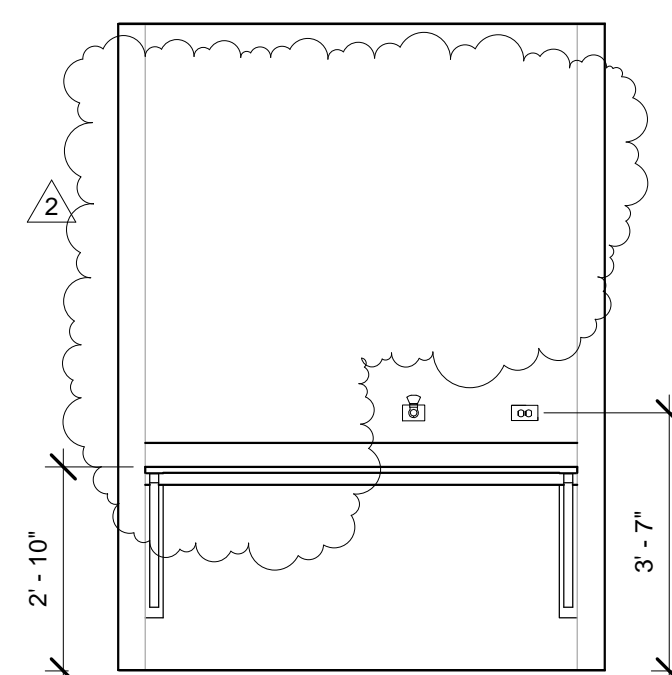
5 EMBRYO PROCESSING 401W-3
SCALE: 3/8" = 1'-0"



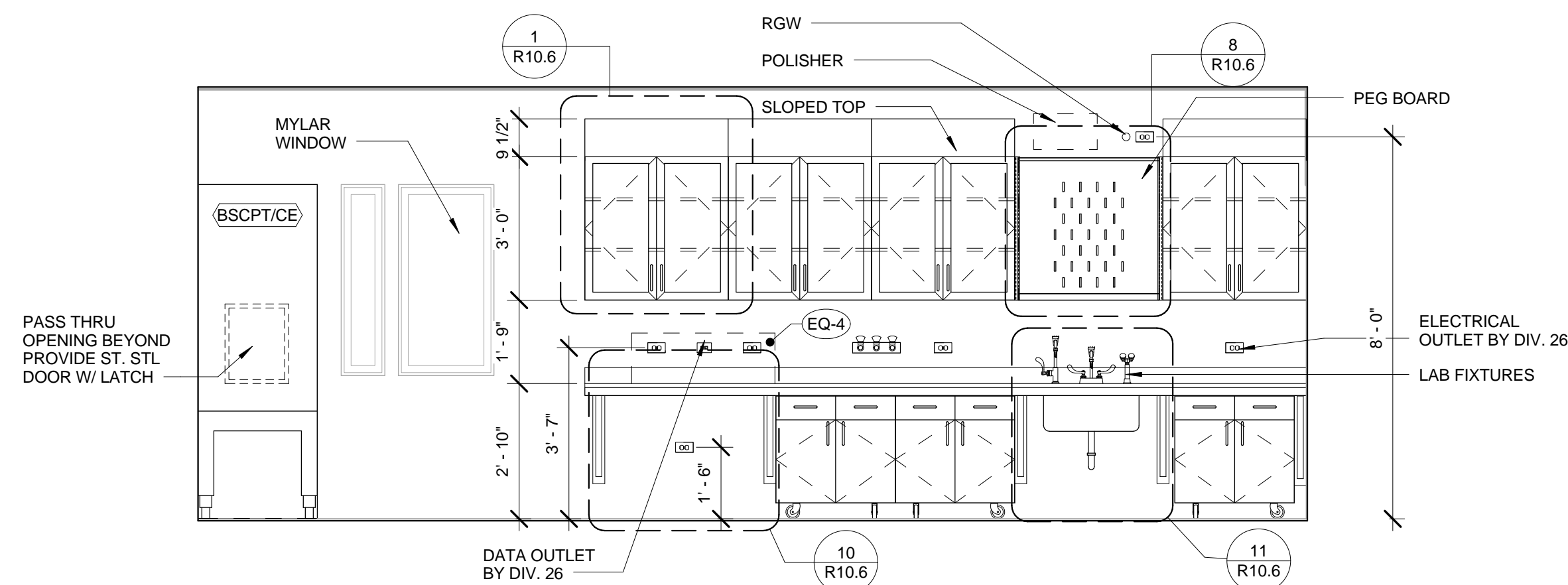
17 ENTRY CORRIDOR 401
SCALE: 3/8" = 1'-0"



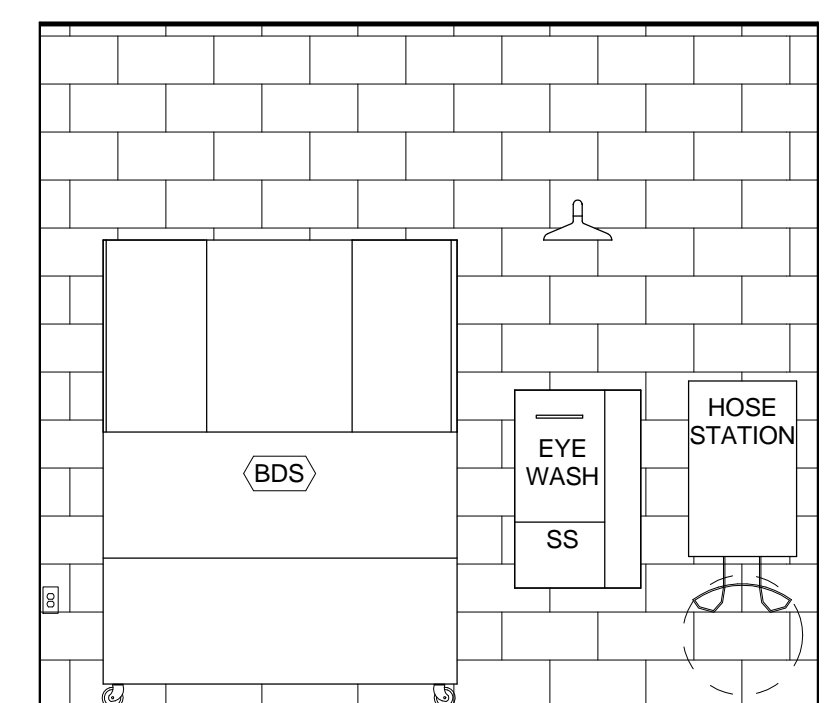
14 CLEAN CAGE 401E-1
SCALE: 3/8" = 1'-0"



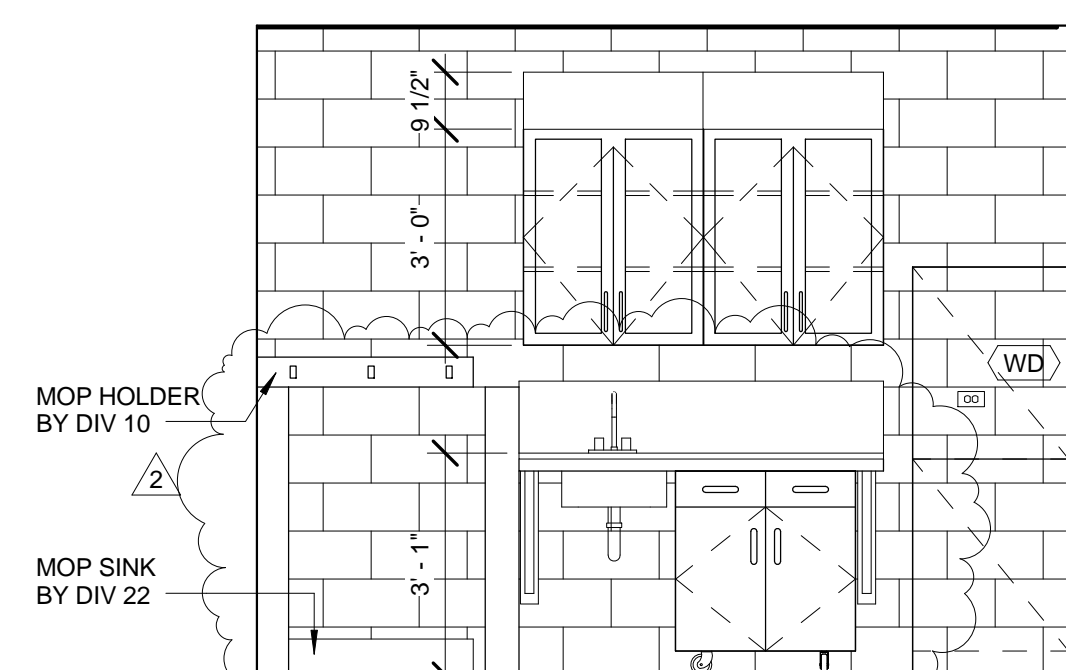
9 RETURN CORRIDOR 401R
SCALE: 3/8" = 1'-0"



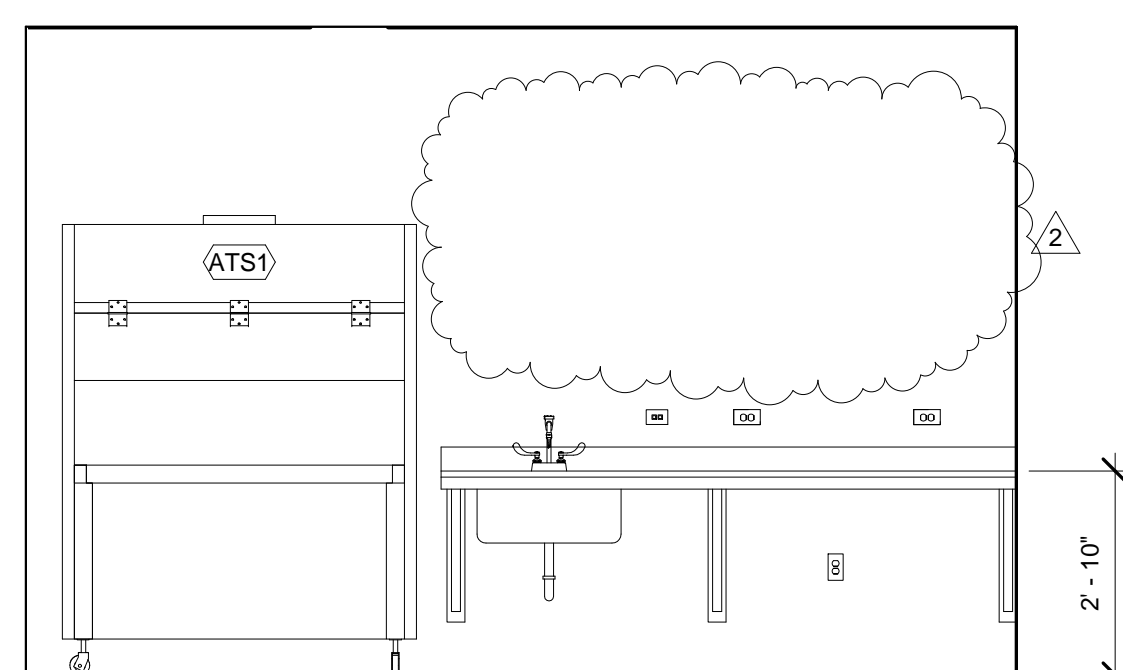
4 EMBRYO PROCESSING 401W-2
SCALE: 3/8" = 1'-0"



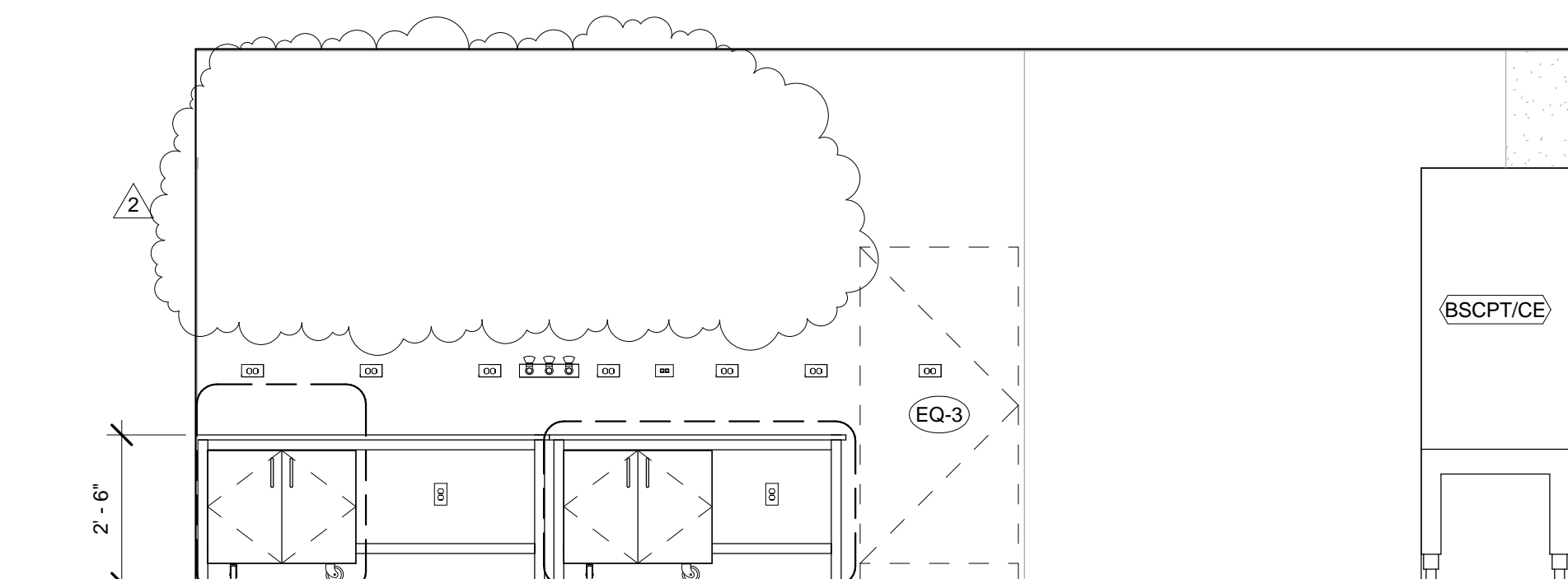
16 SOILED CAGE B 401C
SCALE: 3/8" = 1'-0"



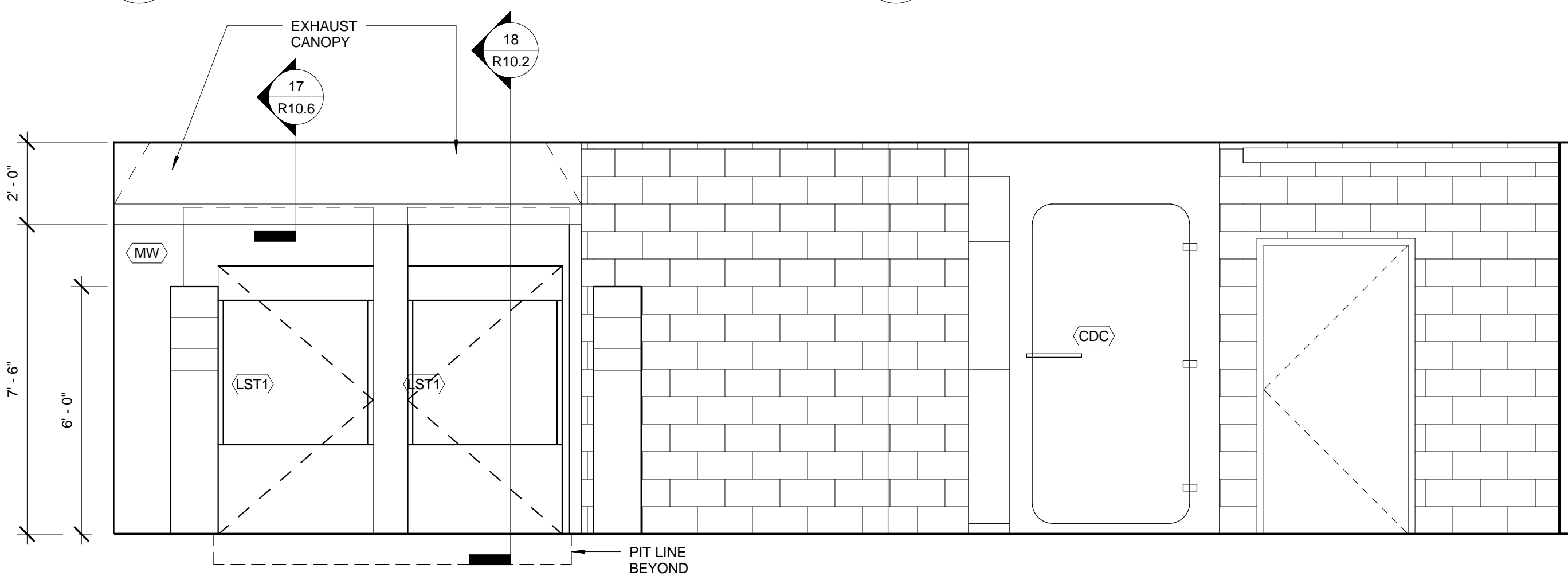
13 LAUNDRY STORAGE 401A
SCALE: 3/8" = 1'-0"



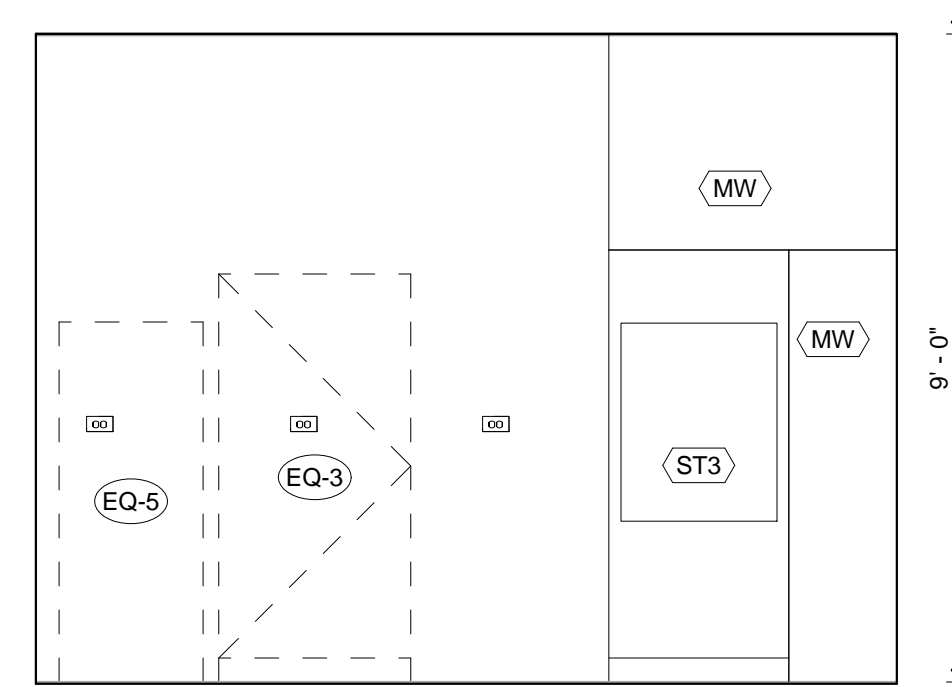
8 QUARANTINE 401W1
SCALE: 3/8" = 1'-0"



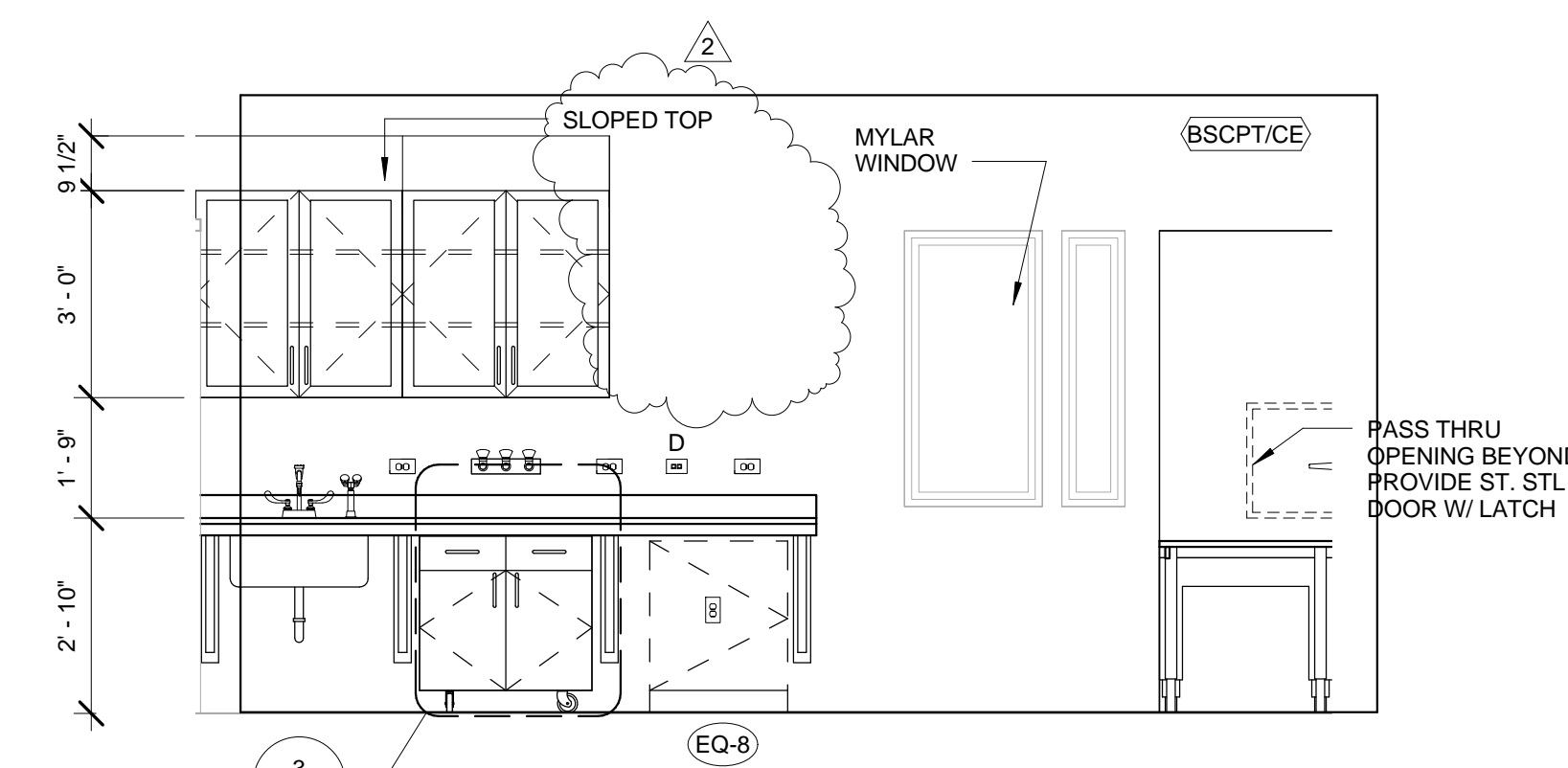
3 EMBRYO PROCESSING 401W-1
SCALE: 3/8" = 1'-0"



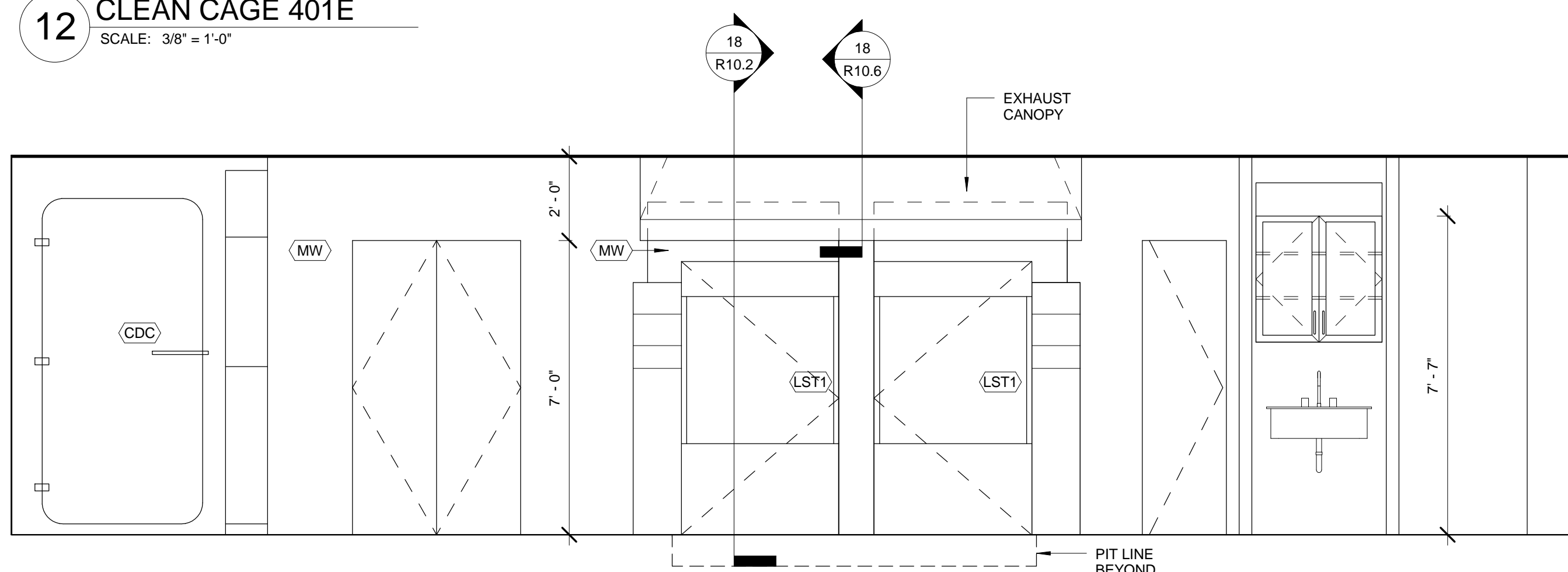
12 CLEAN CAGE 401E
SCALE: 3/8" = 1'-0"



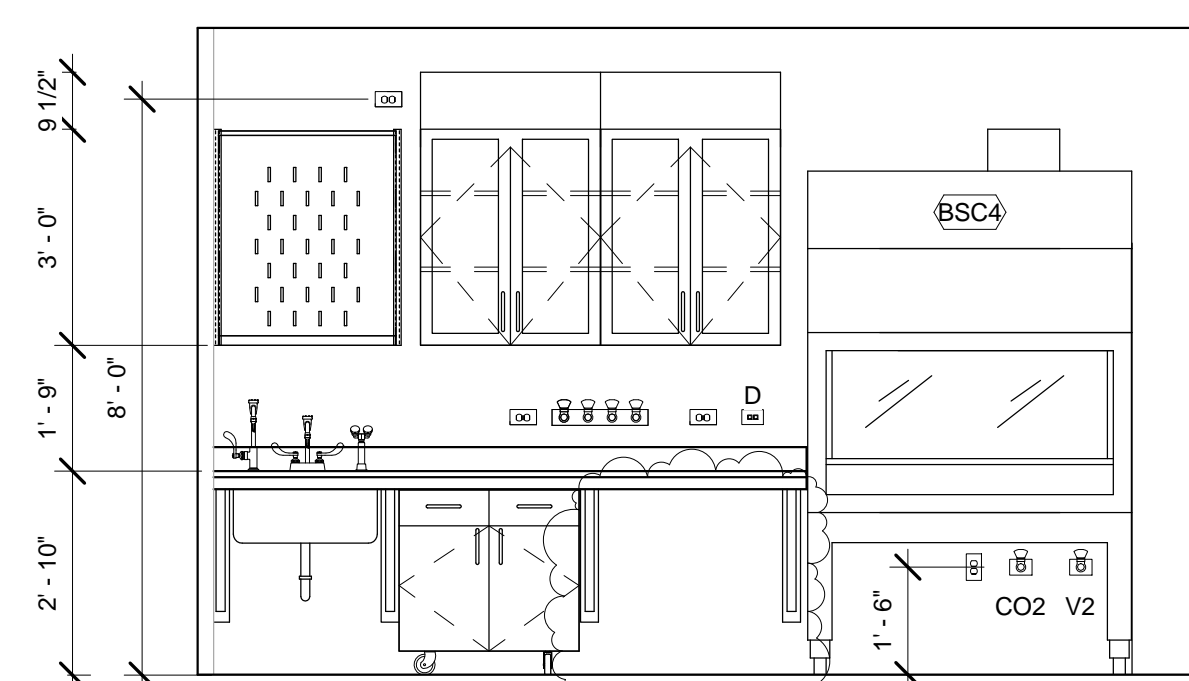
7 EQUIPMENT 401W1-2
SCALE: 3/8" = 1'-0"



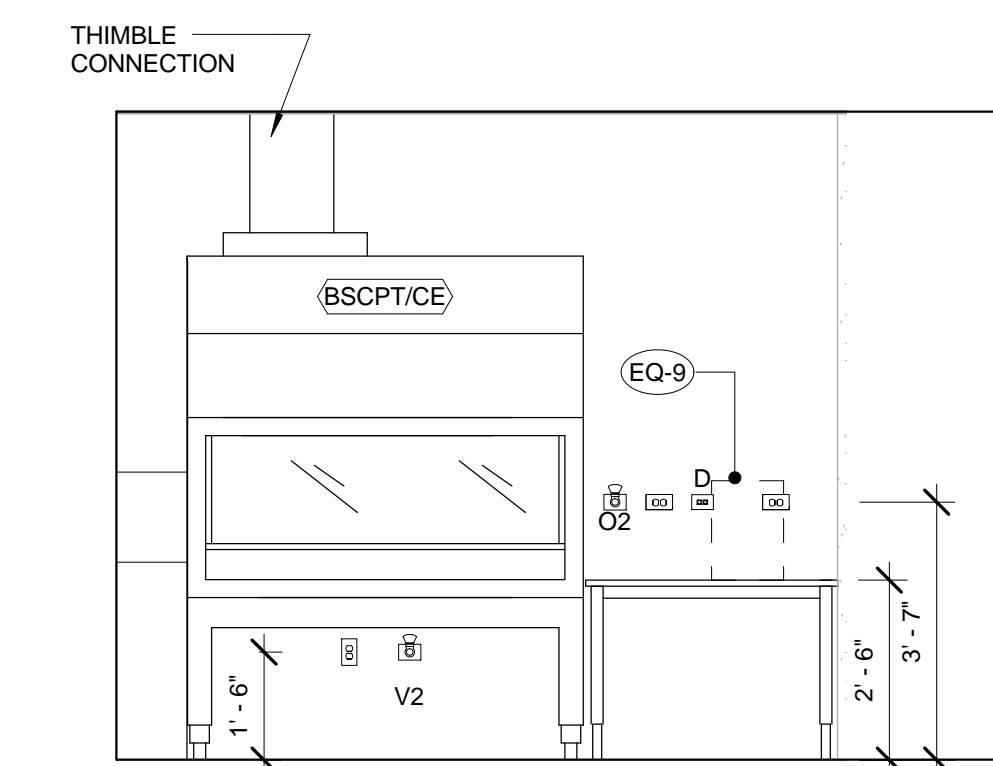
2 IMPLANT LAB 401U-1
SCALE: 3/8" = 1'-0"



11 STERILE 401M & PART CLEAN CORRIDOR 401L
SCALE: 3/8" = 1'-0"



6 EQUIPMENT 401W1-1
SCALE: 3/8" = 1'-0"



1 IMPLANT LAB 401U
SCALE: 3/8" = 1'-0"

NIH GRANT NO. 1G20RR031064-01

UNIVERSITY OF KENTUCKY - Renovate 4th Floor Sanders Brown Center

INTERIOR ELEVATIONS

Project Number 1005.00

Date November, 2011

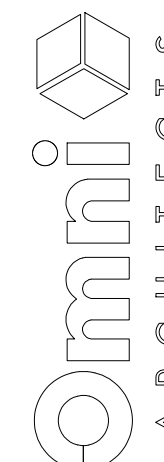
Drawn By MGR

Checked By DB

Scale 3/8" = 1'-0"

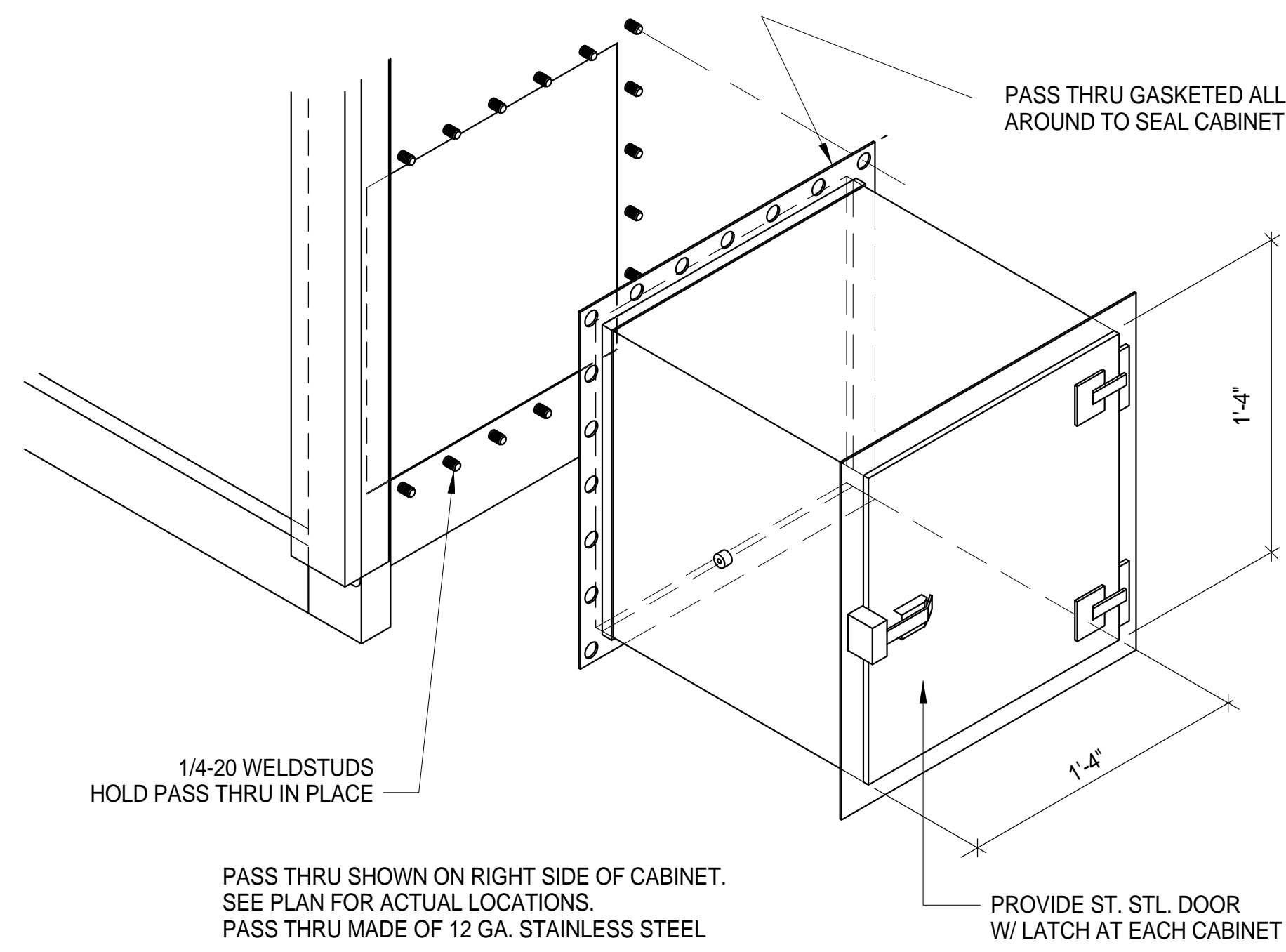
NIH REVIEW

R10.2

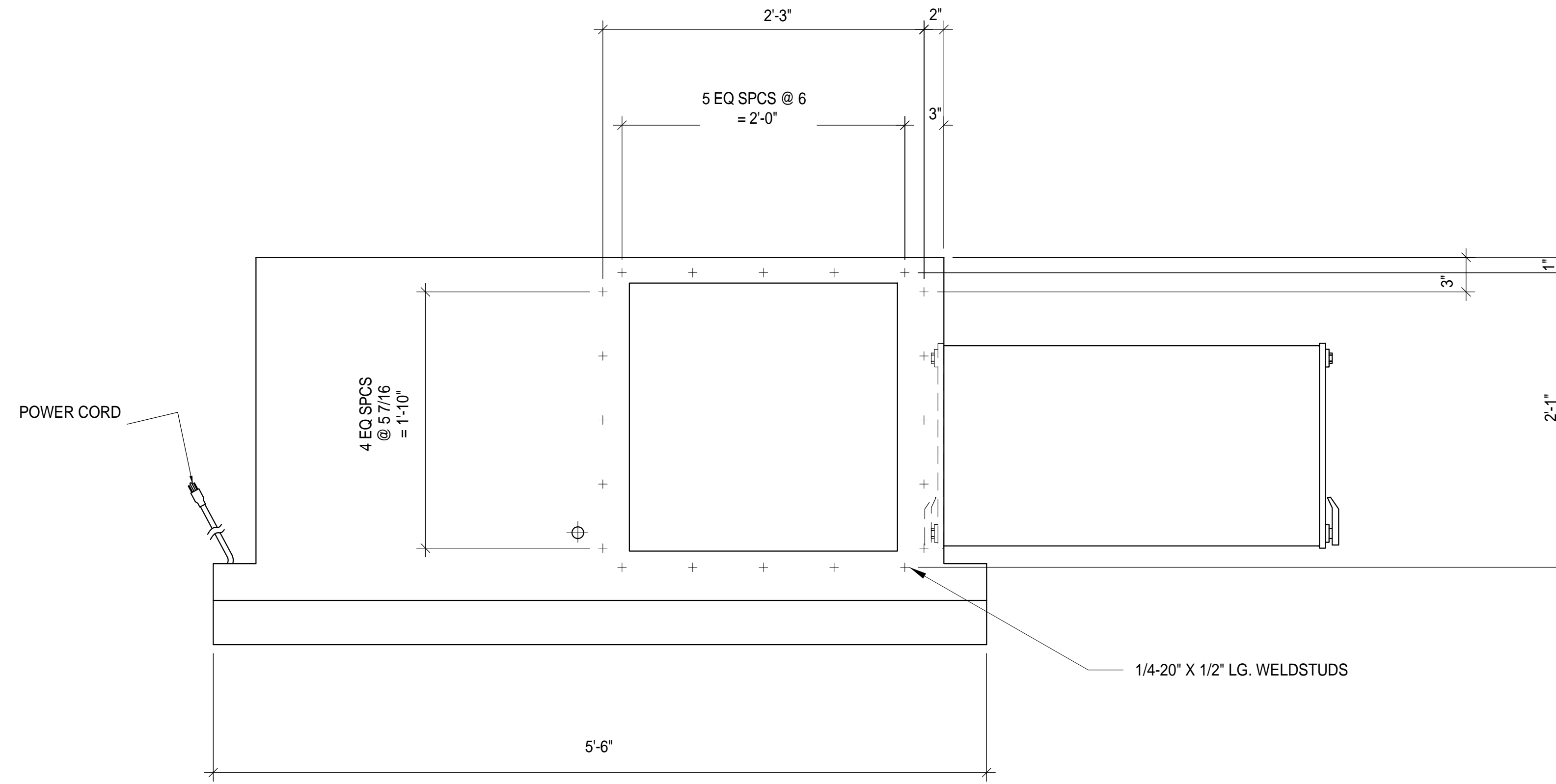


212 North Upper Street
Lexington, Kentucky 40507-1001
p 859.252.6664 f 859.253.2358
www.omniarchitects.com

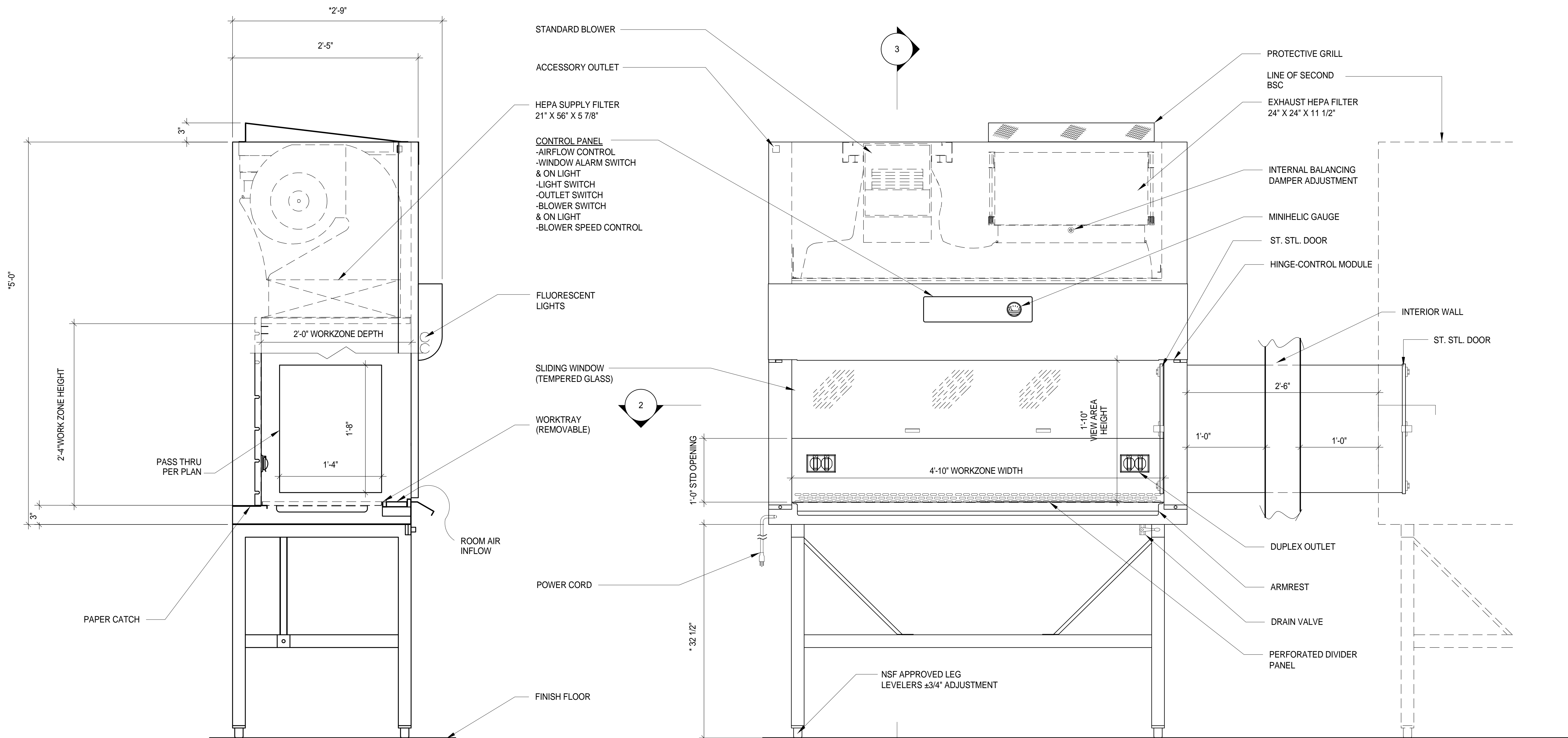
This Drawing and the Design shown
are the property of Omni Architects, Inc.
The reproduction, copying or other use of
this Drawing or Design without the
written consent of Omni Architects is prohibited.



1 DETAIL
N.T.S.



2 PLAN/DETAIL
1-1/2" = 1'-0"



3 SECTION
1-1/2" = 1'-0"

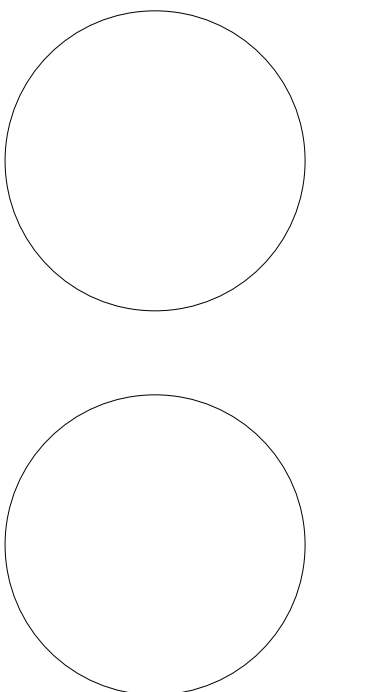
4 ELEVATION
1-1/2" = 1'-0"

* OVERALL DIMENSIONAL TOLERANCE ±1/4"
ALL OTHER DIMENSIONS ±1/8"

NIH GRANT NO. 1G20RR031064-01

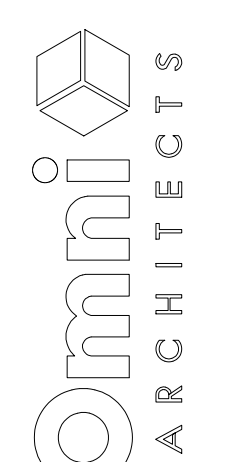
UNIVERSITY OF KENTUCKY - Renovate 4th Floor Sanders Brown Center
PASS THRU BIOLOGICAL SAFETY CABINET DETAILS

Project Number 1005.00 Date November, 2011 Drawn By MGR Checked By DB Scale 1 1/2" = 1'-0"



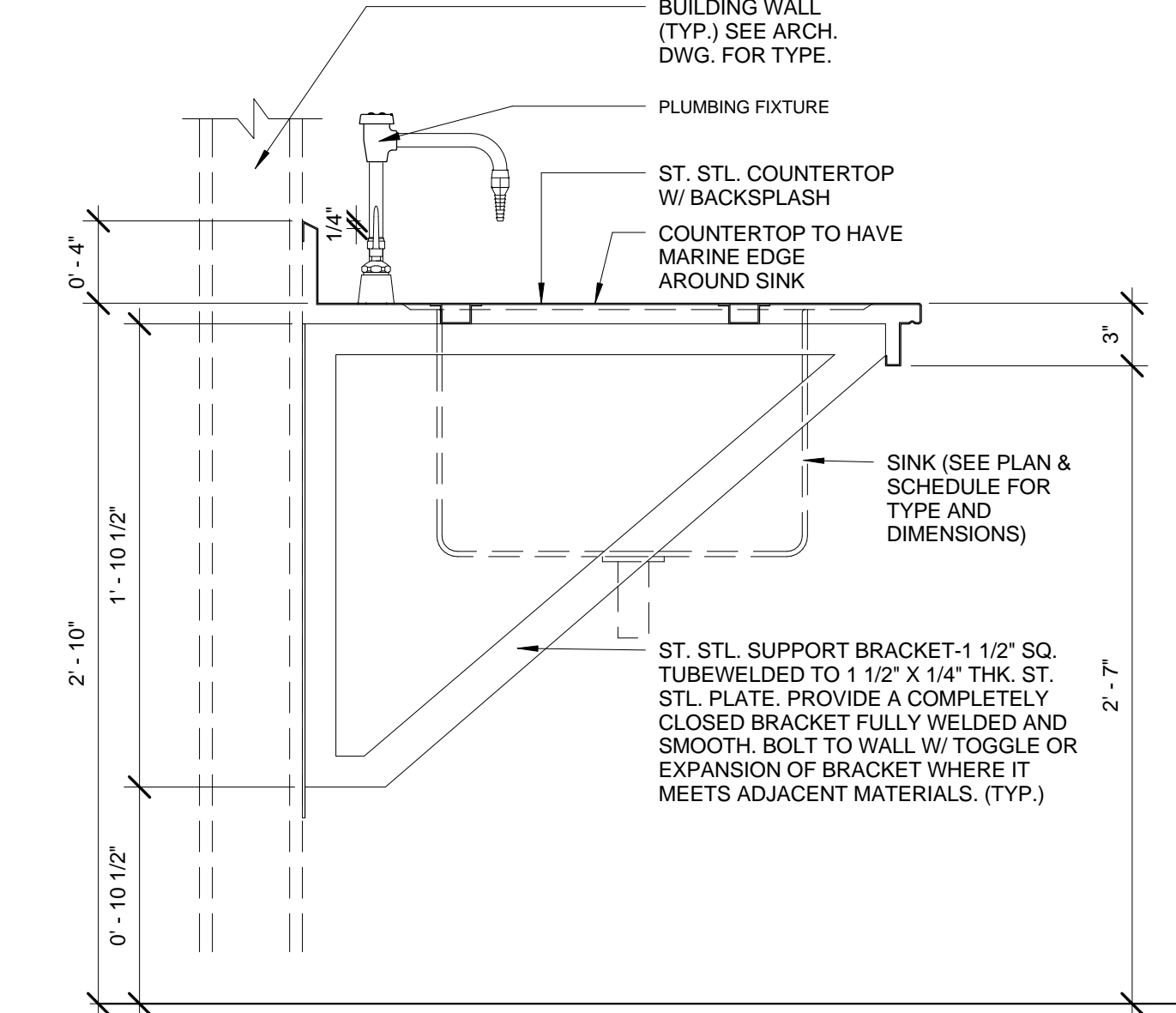
This Drawing and the Design shown are the property of Omni Architects. The reproduction, copying or other use of this Drawing or Design without the written consent of Omni Architects is prohibited.

212 North Upper Street
Lexington, Kentucky 40507-1001
P 859.252.6664 F 859.253.2358
www.omniarchitects.com

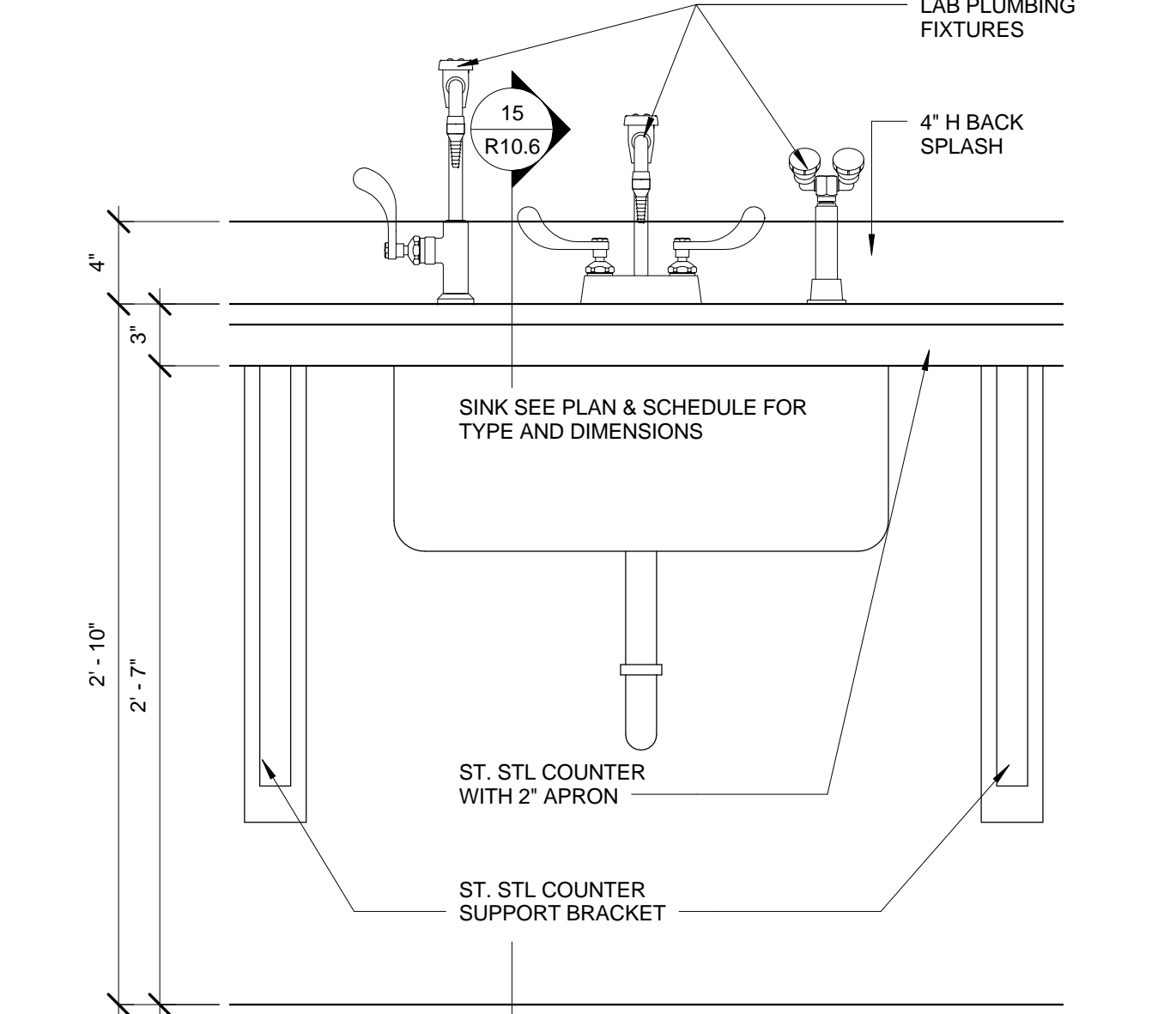


NIH REVIEW

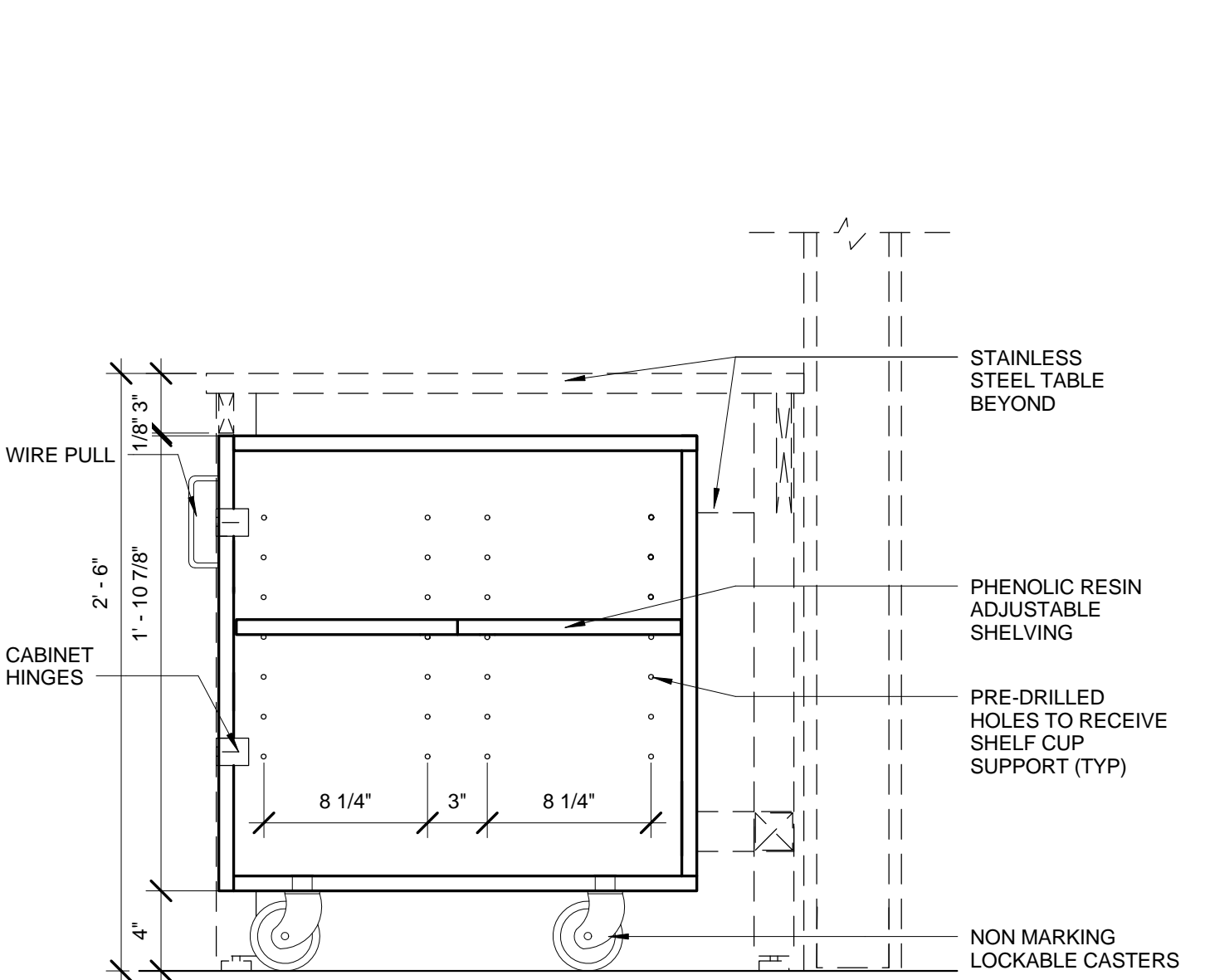
R10.5



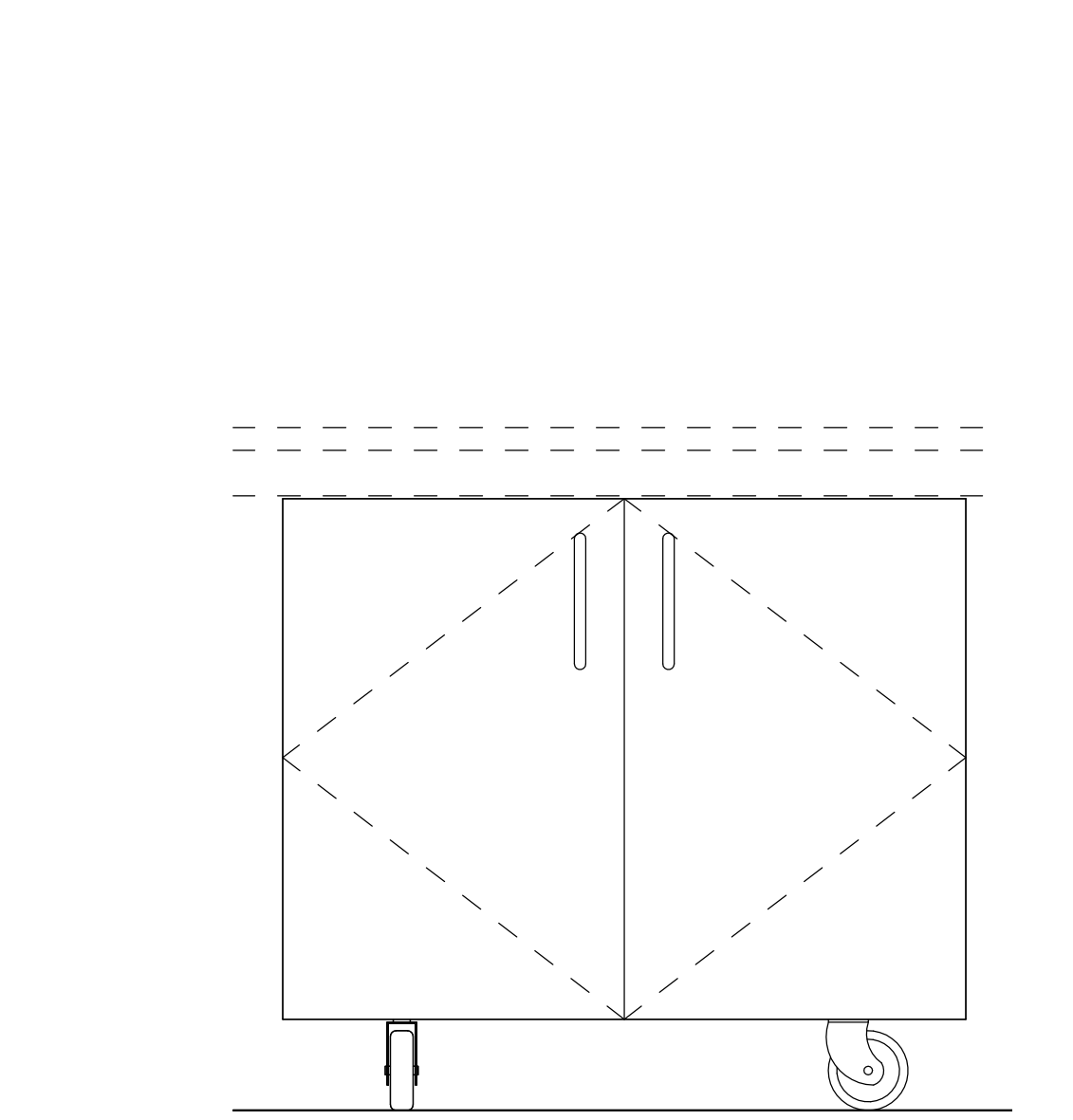
15 SECTION- ST. STL. COUNTER W/ INTEGRAL SINK DETAIL
SCALE: 1 1/2" = 1'-0"



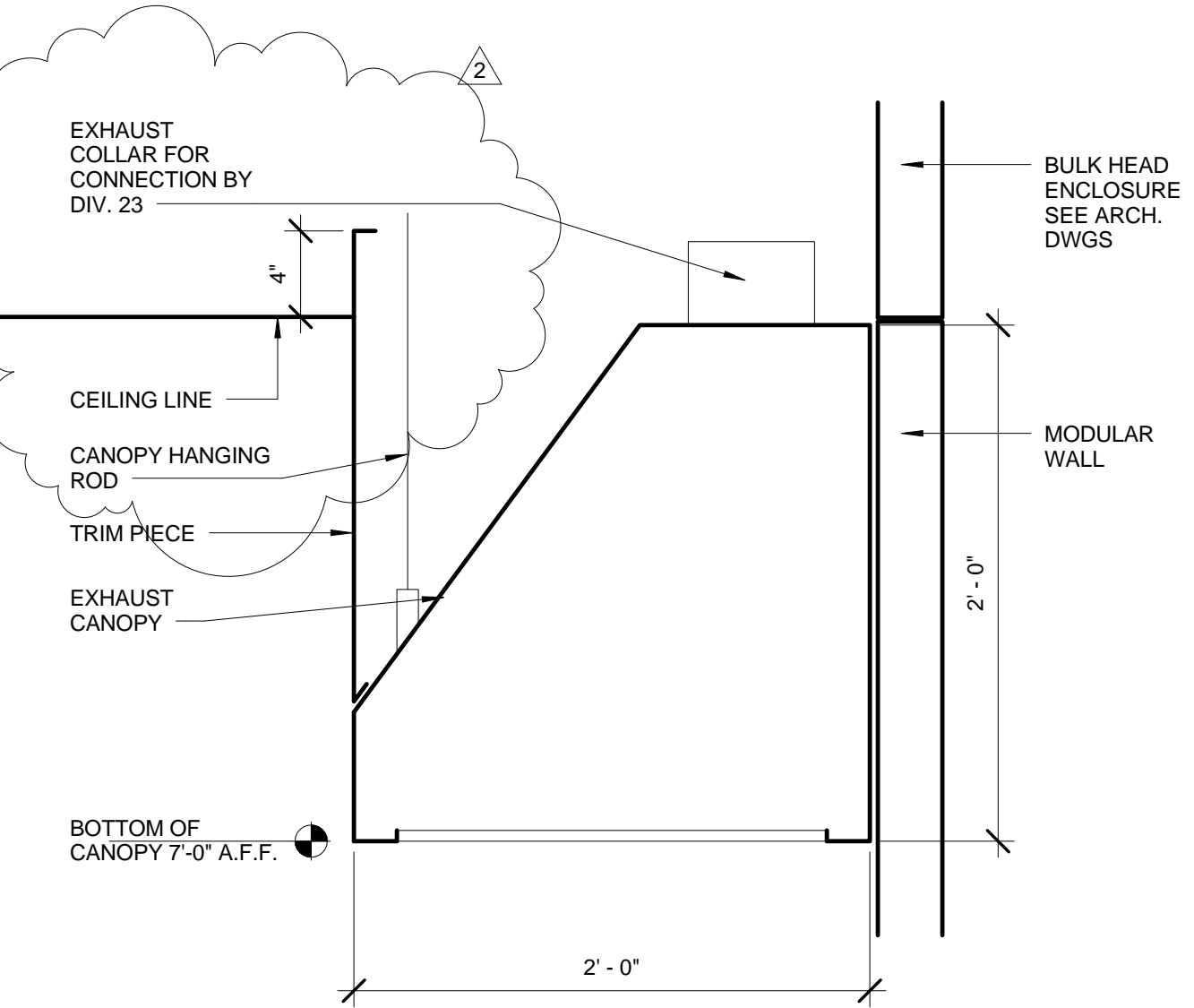
11 ELEVATION- ST. STEEL COUNTER W/ INTEGRAL SINK
SCALE: 1 1/2" = 1'-0"



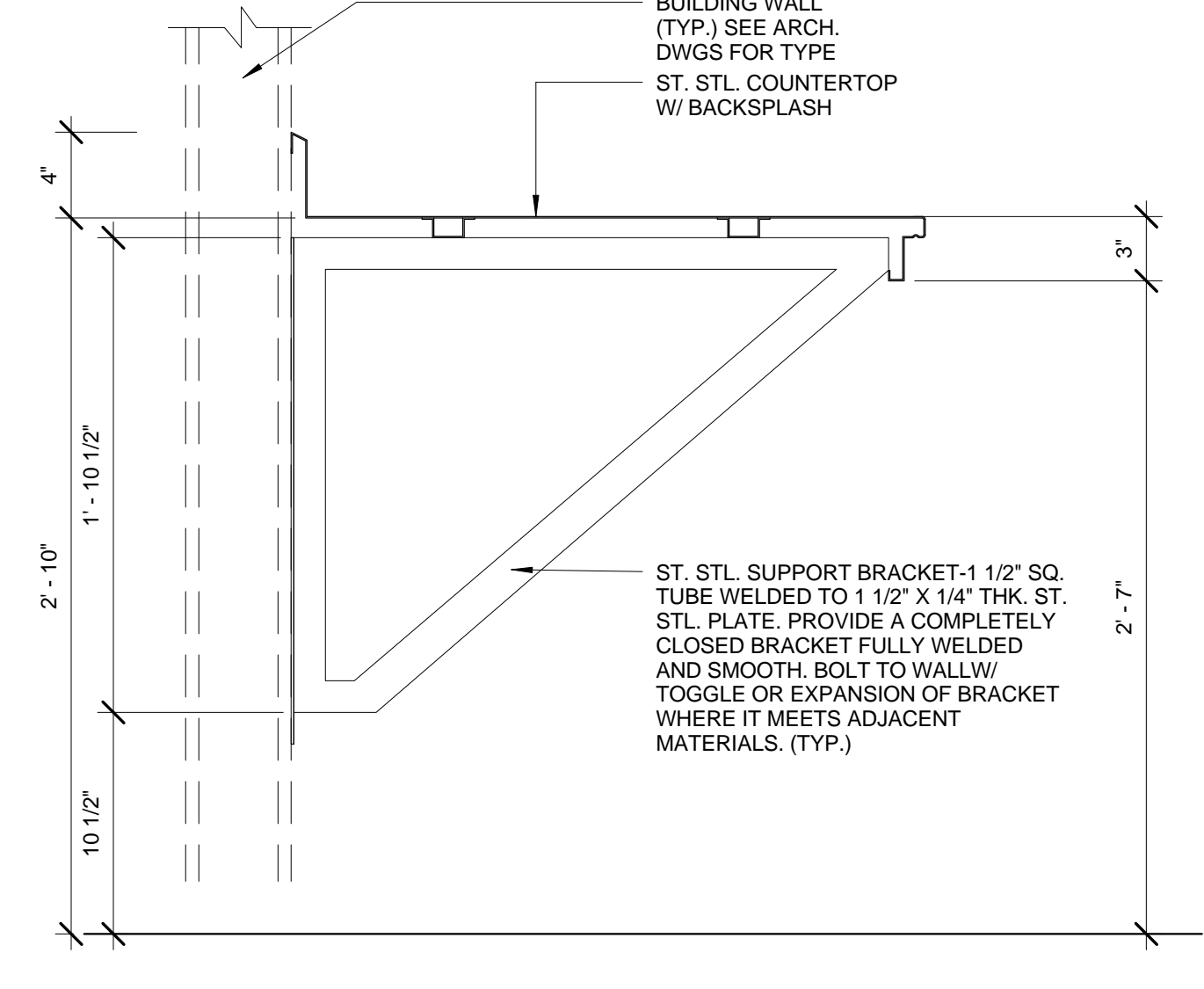
7 SECTION BASE CABINET BMLAC
SCALE: 1 1/2" = 1'-0"



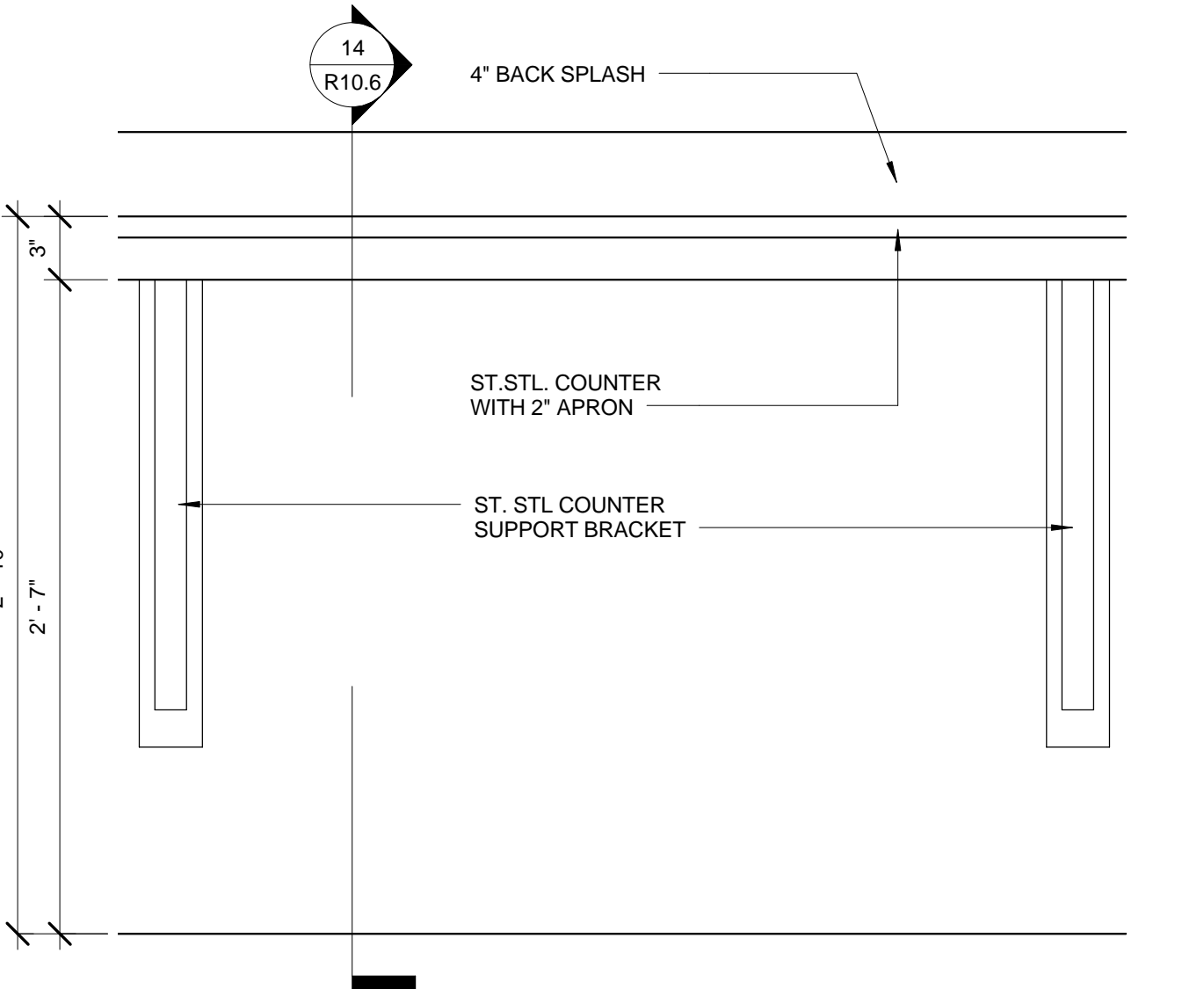
4 ELEVATION- BASE CABINET BMLAC
SCALE: 1 1/2" = 1'-0"



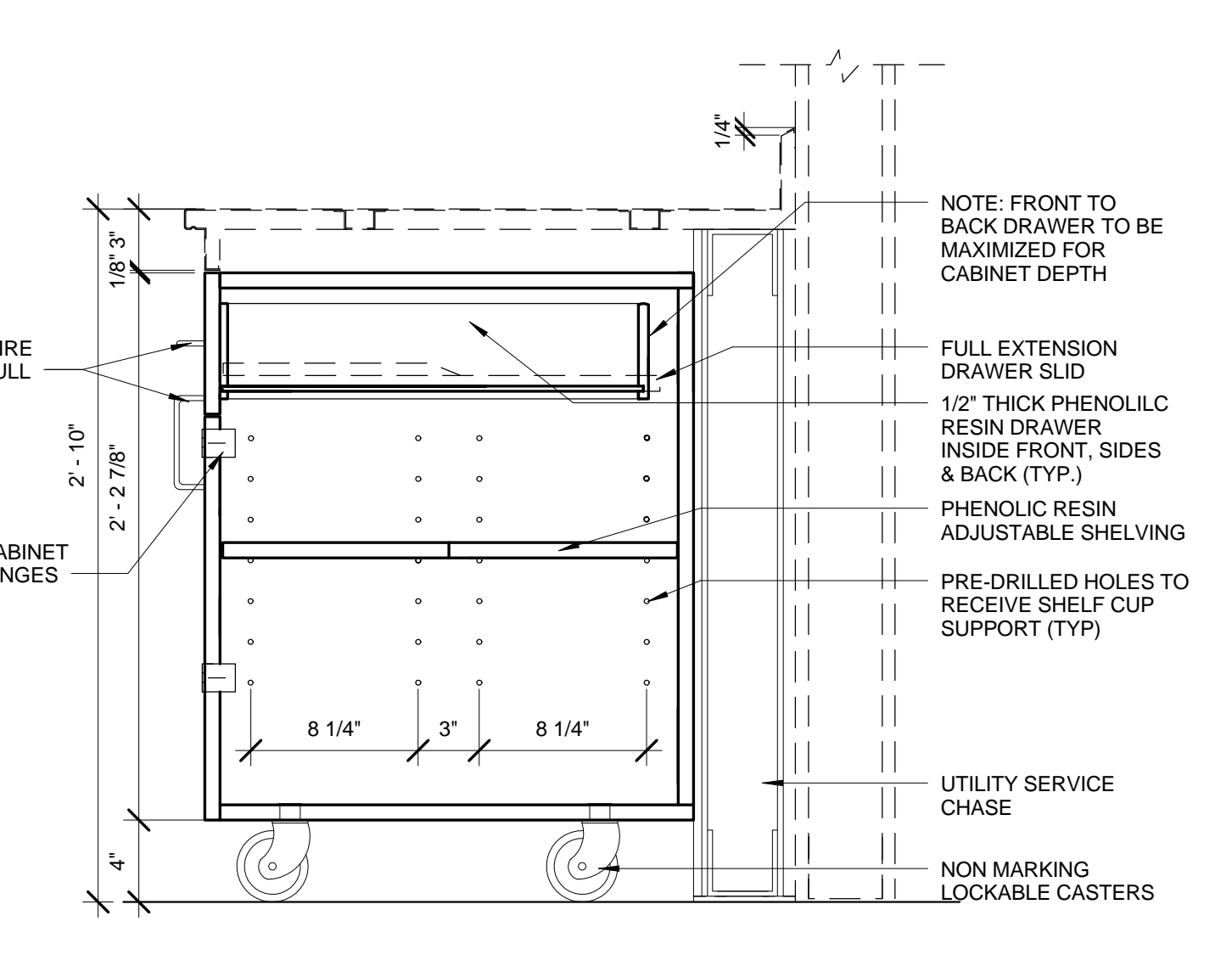
18 EXHAUST CANOPY DETAIL @ CLEAN CORRIDOR
SCALE: 1 1/2" = 1'-0"



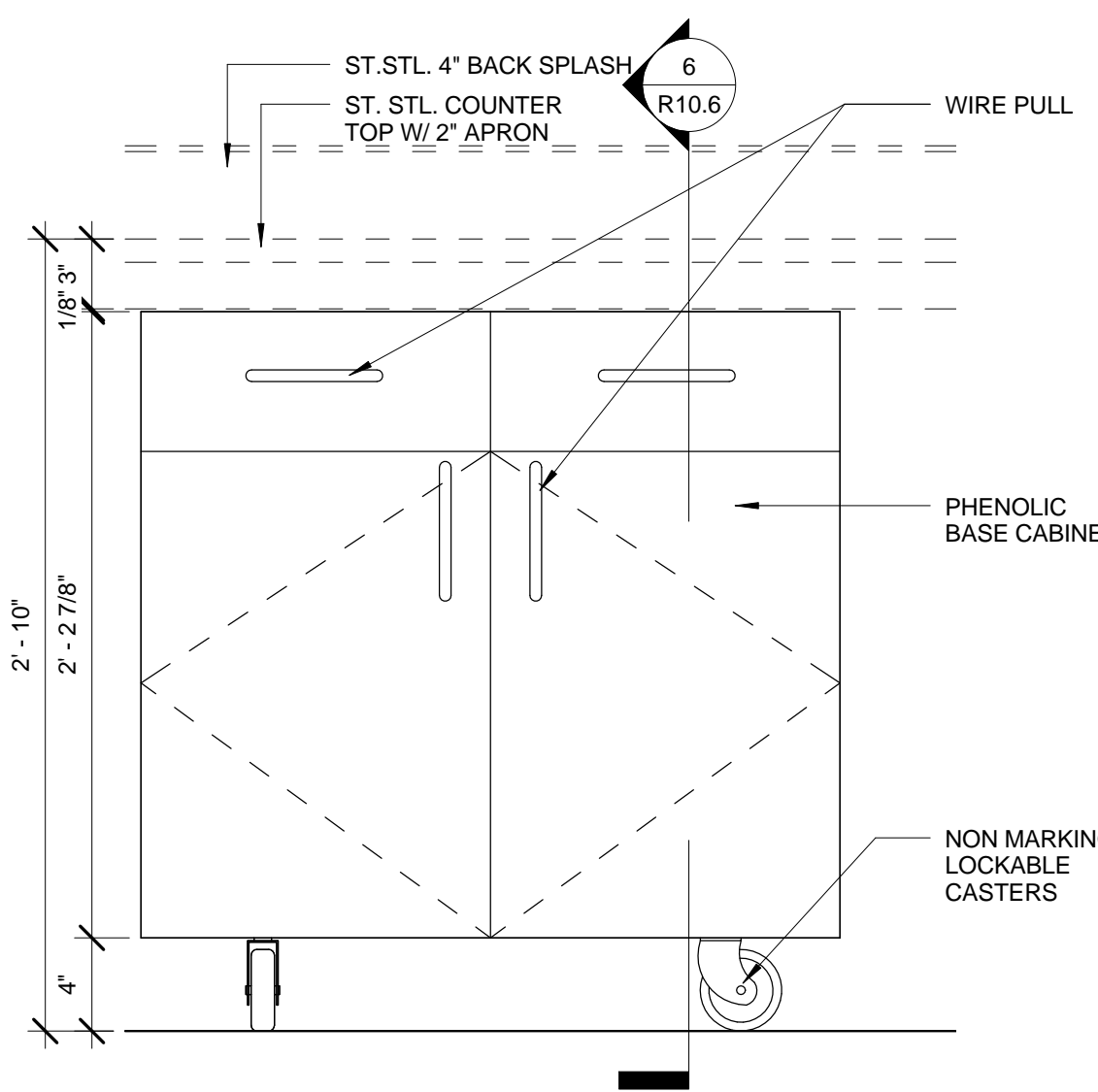
14 SECTION- ST. STL. COUNTER DETAIL
SCALE: 1 1/2" = 1'-0"



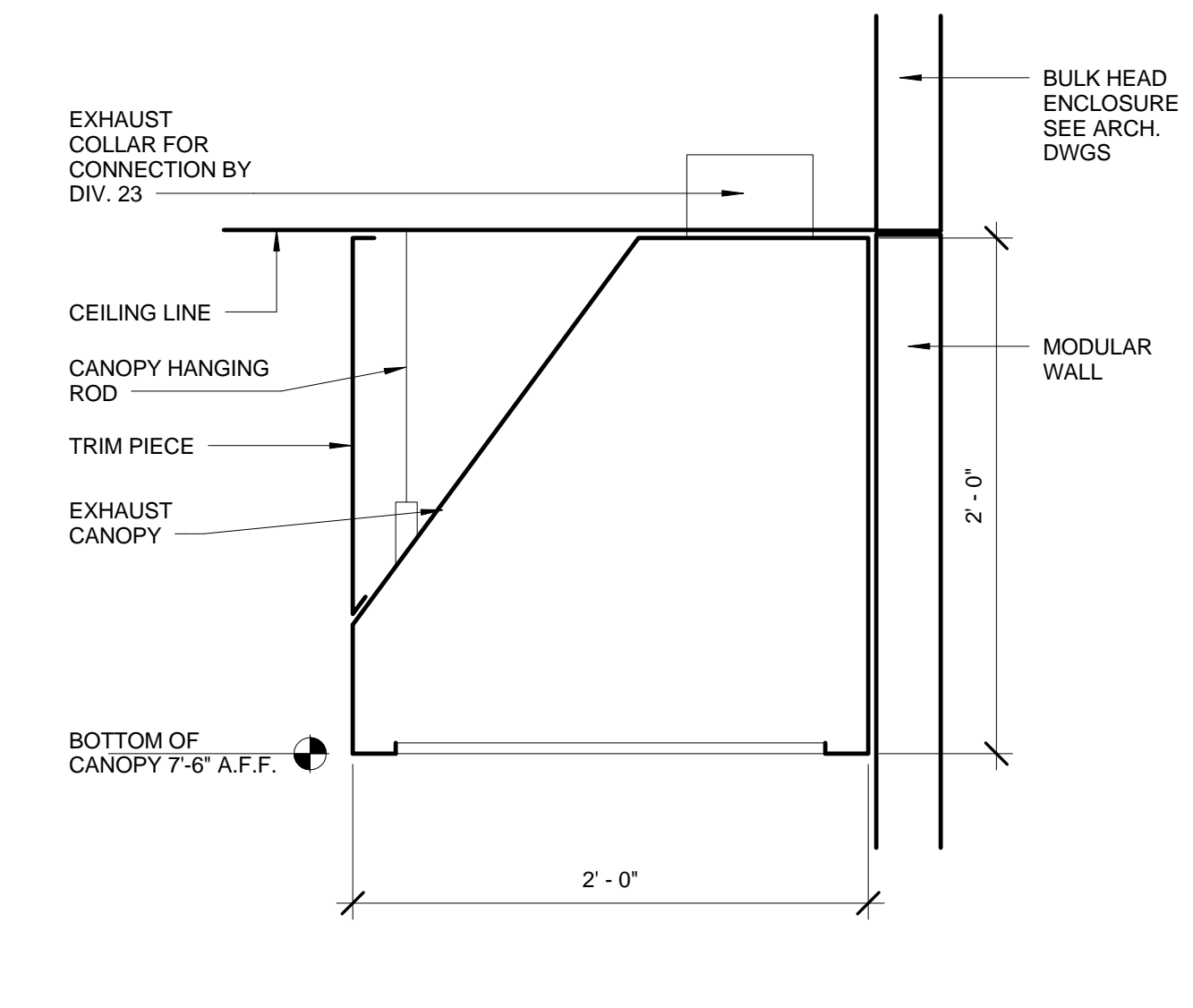
10 ELEVATION- ST. STEEL COUNTER
SCALE: 1 1/2" = 1'-0"



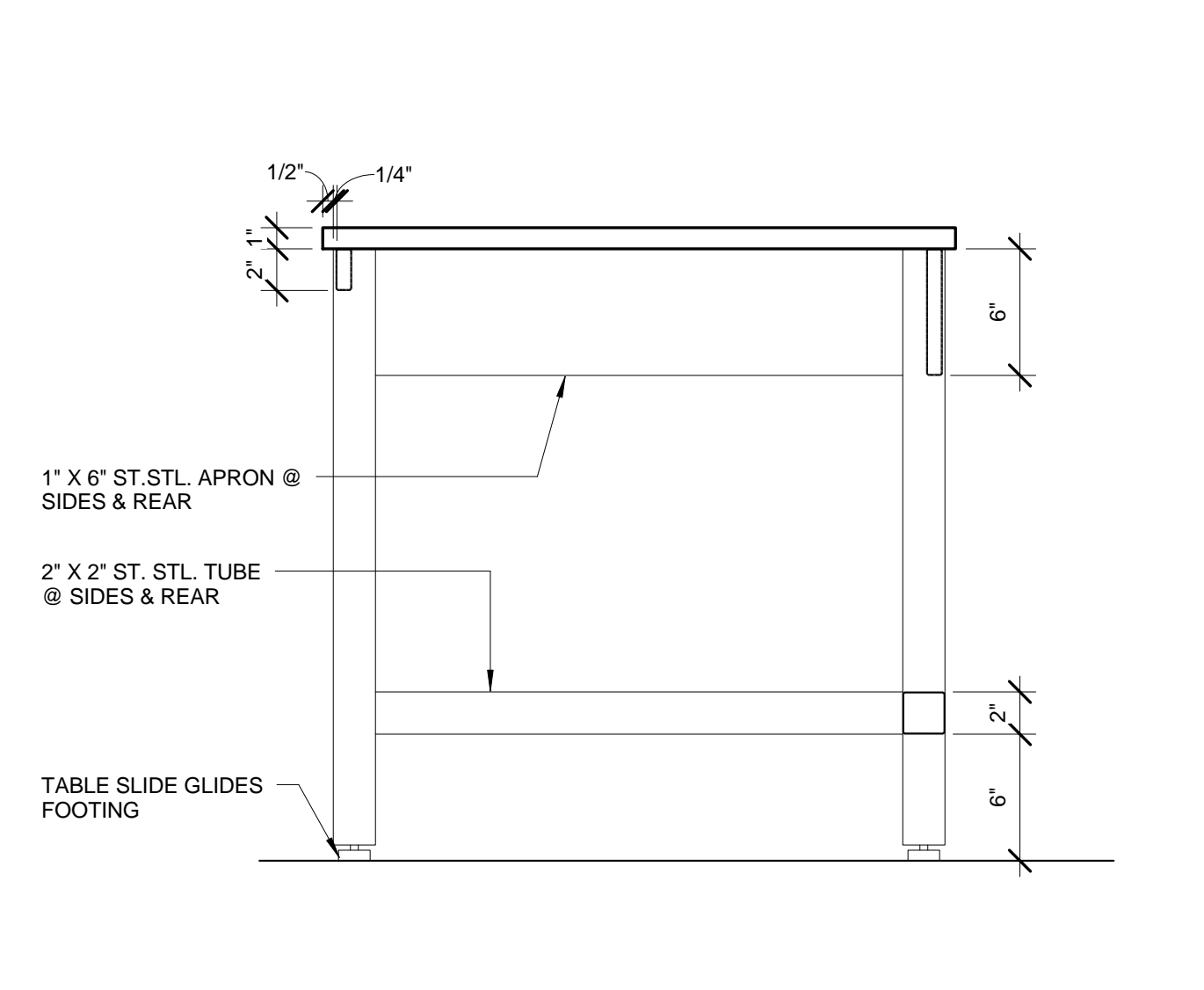
6 SECTION- BASE CABINET BMAC
SCALE: 1 1/2" = 1'-0"



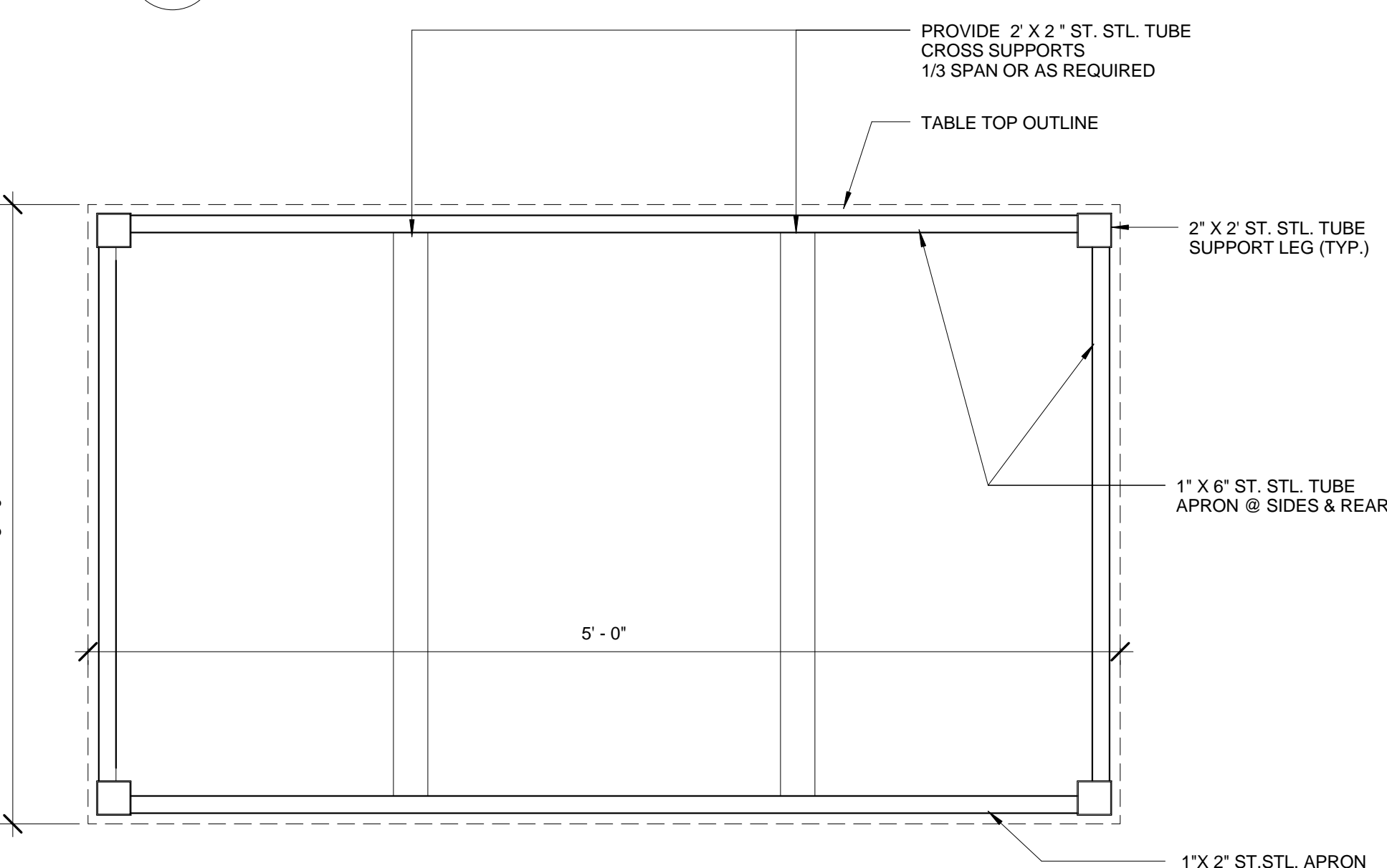
3 ELEVATION- BASE CABINET BMAC
SCALE: 1 1/2" = 1'-0"



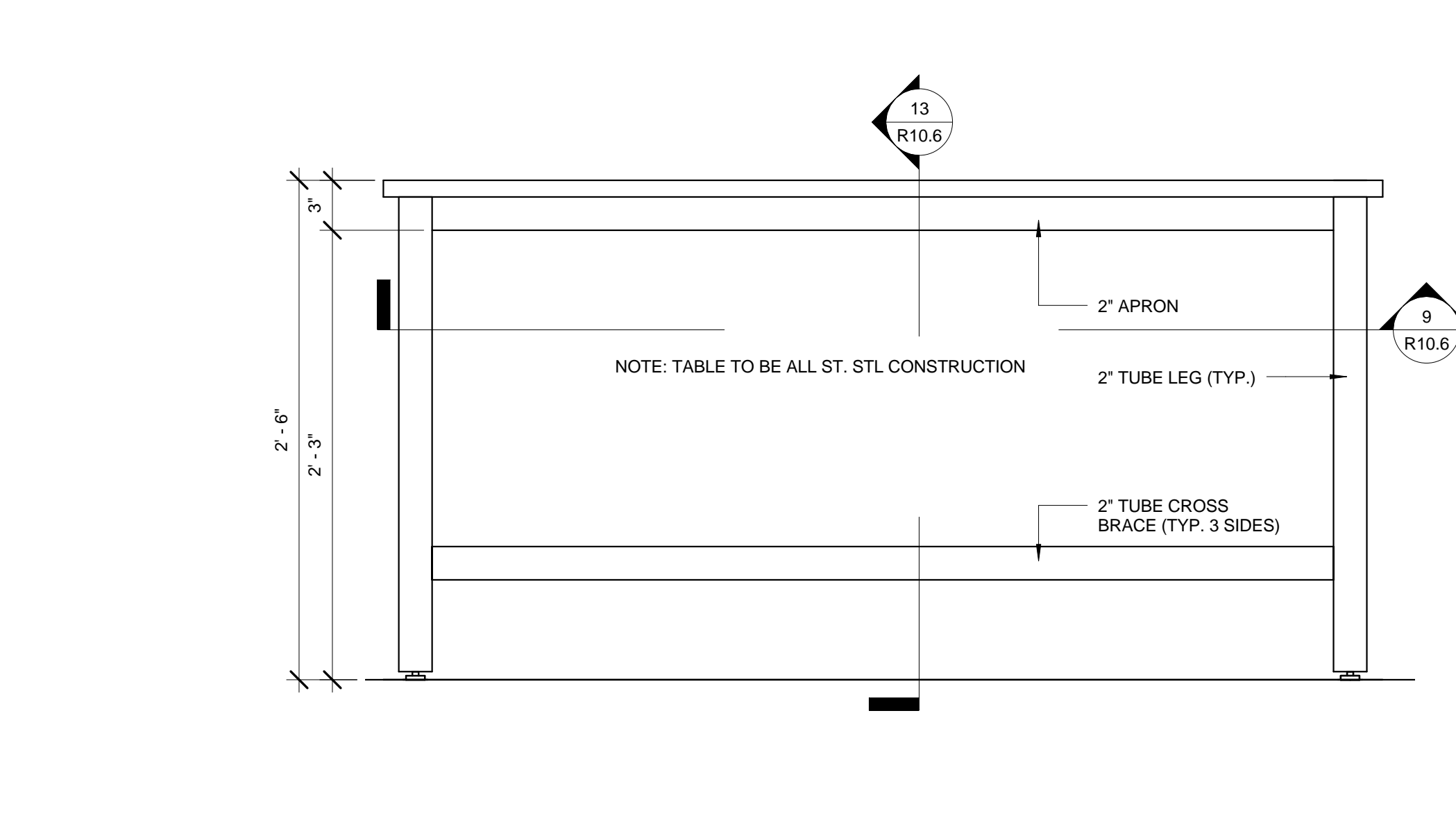
17 CANOPY DETAIL @ CLEAN CAGE & SOILED CAGE
SCALE: 1 1/2" = 1'-0"



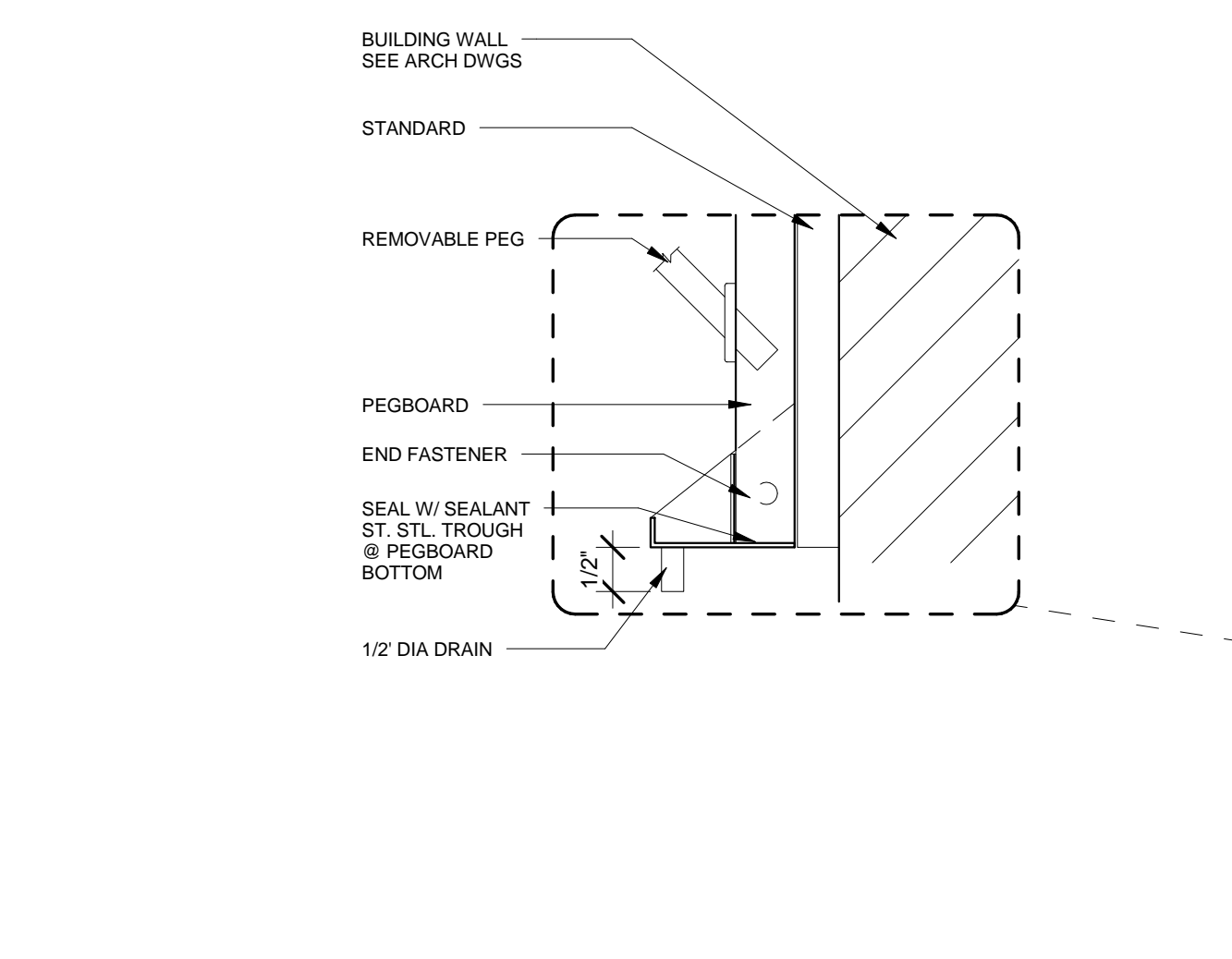
13 SECTION- ST. STL MOVABLE TABLE
SCALE: 1 1/2" = 1'-0"



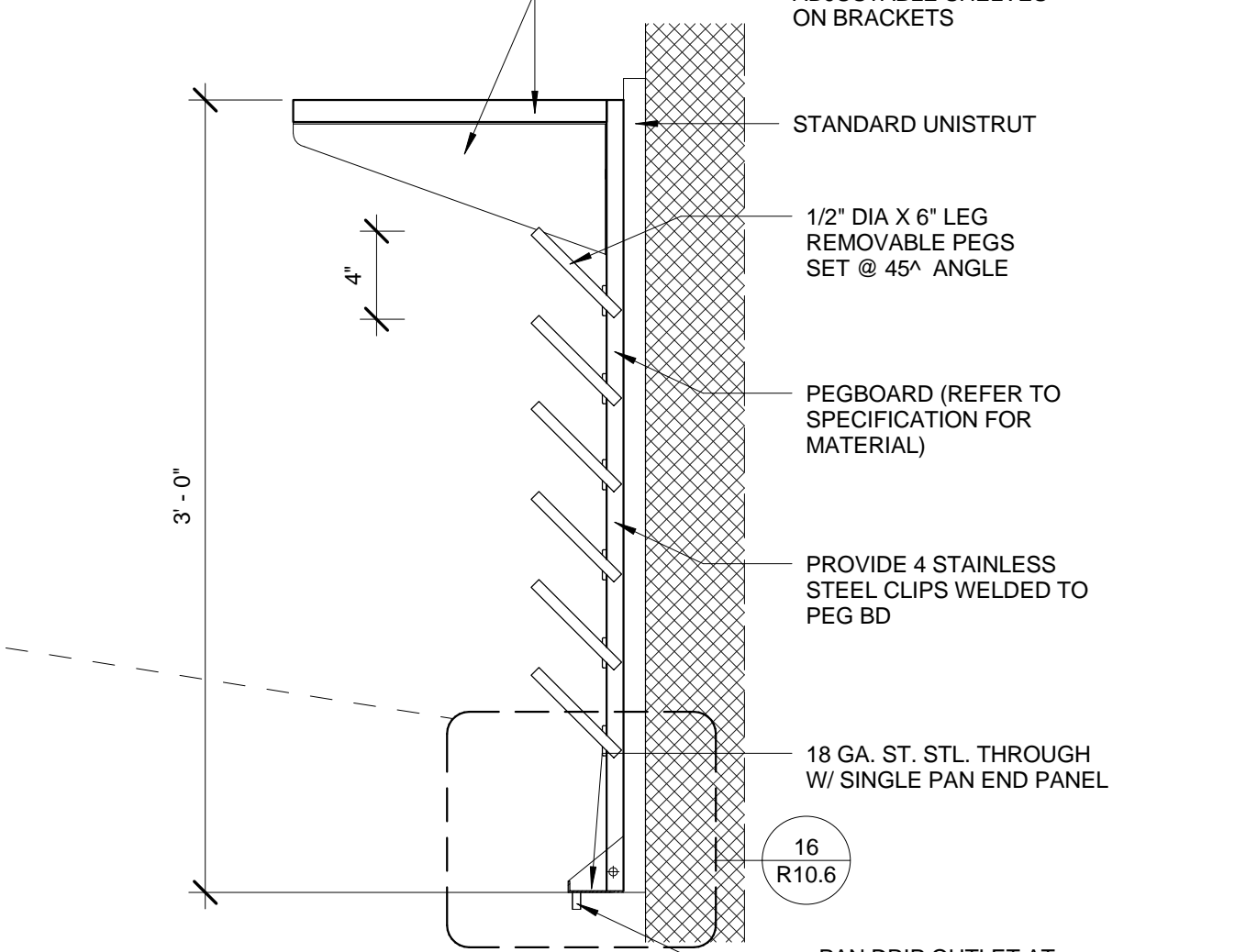
9 PLAN SECTION- ST. STL. MOVABLE TABLE
SCALE: 1 1/2" = 1'-0"



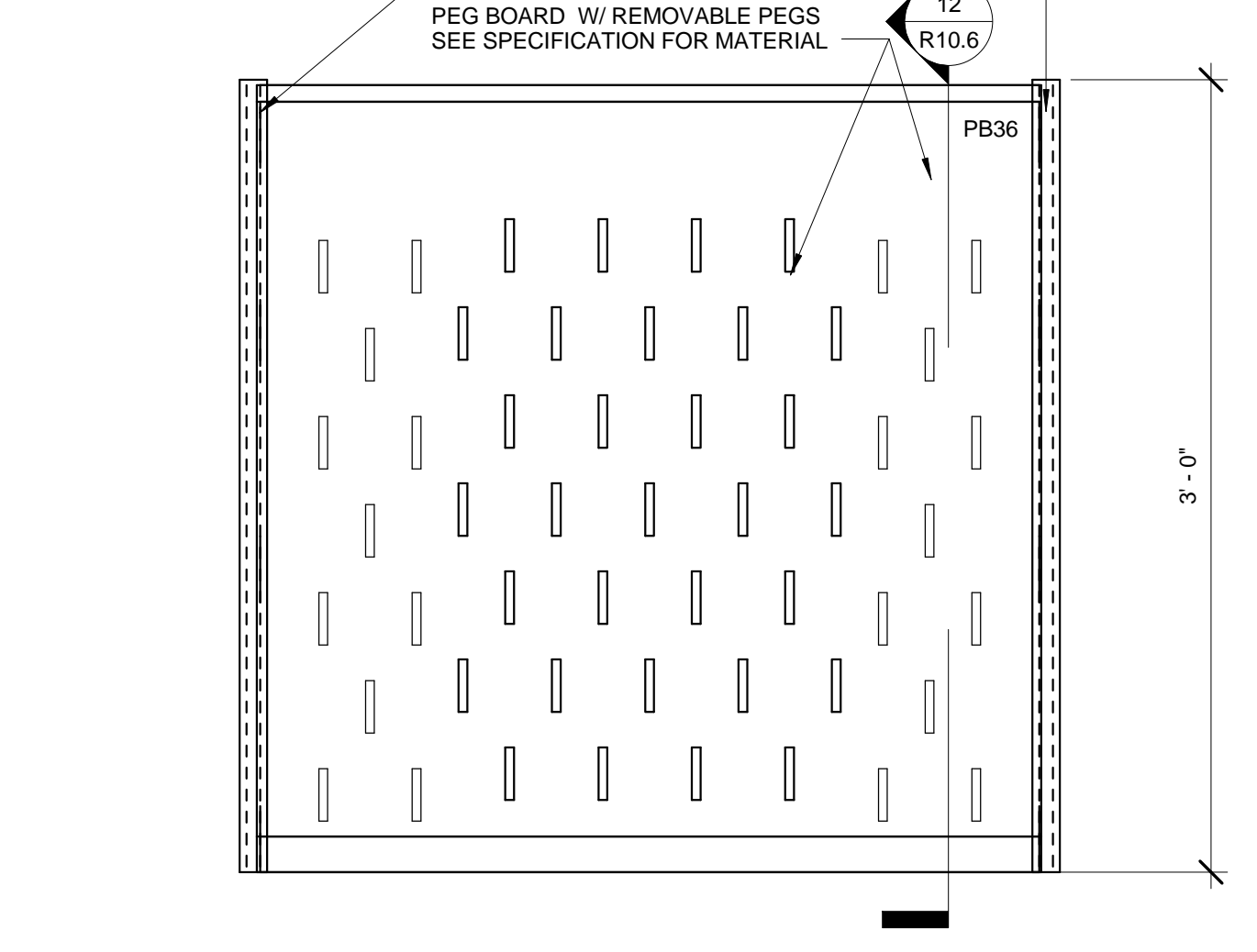
2 ELEVATION- ST. STL TABLE
SCALE: 1 1/2" = 1'-0"



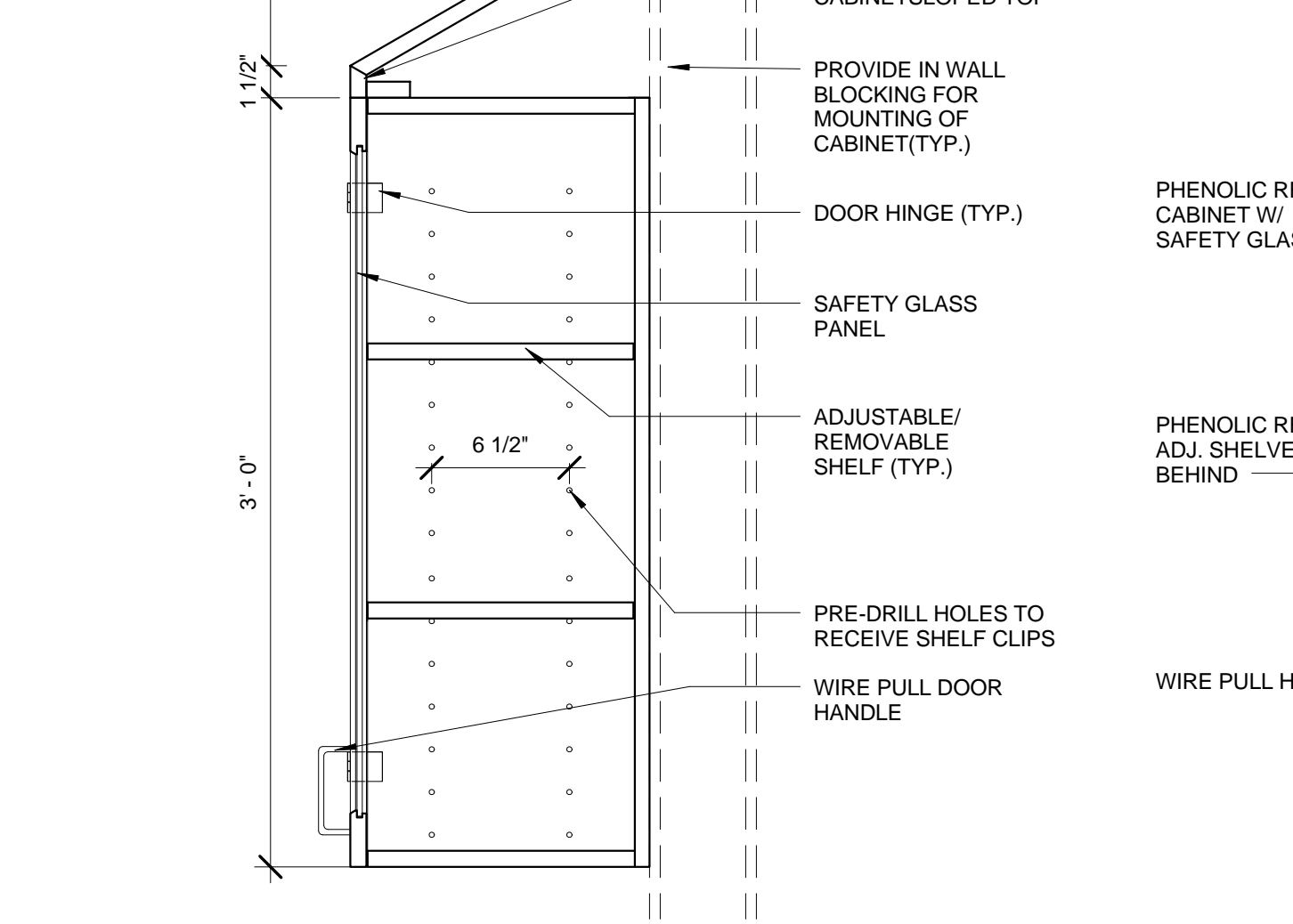
16 DETAIL- PEG BOARD
SCALE: 6\"/>



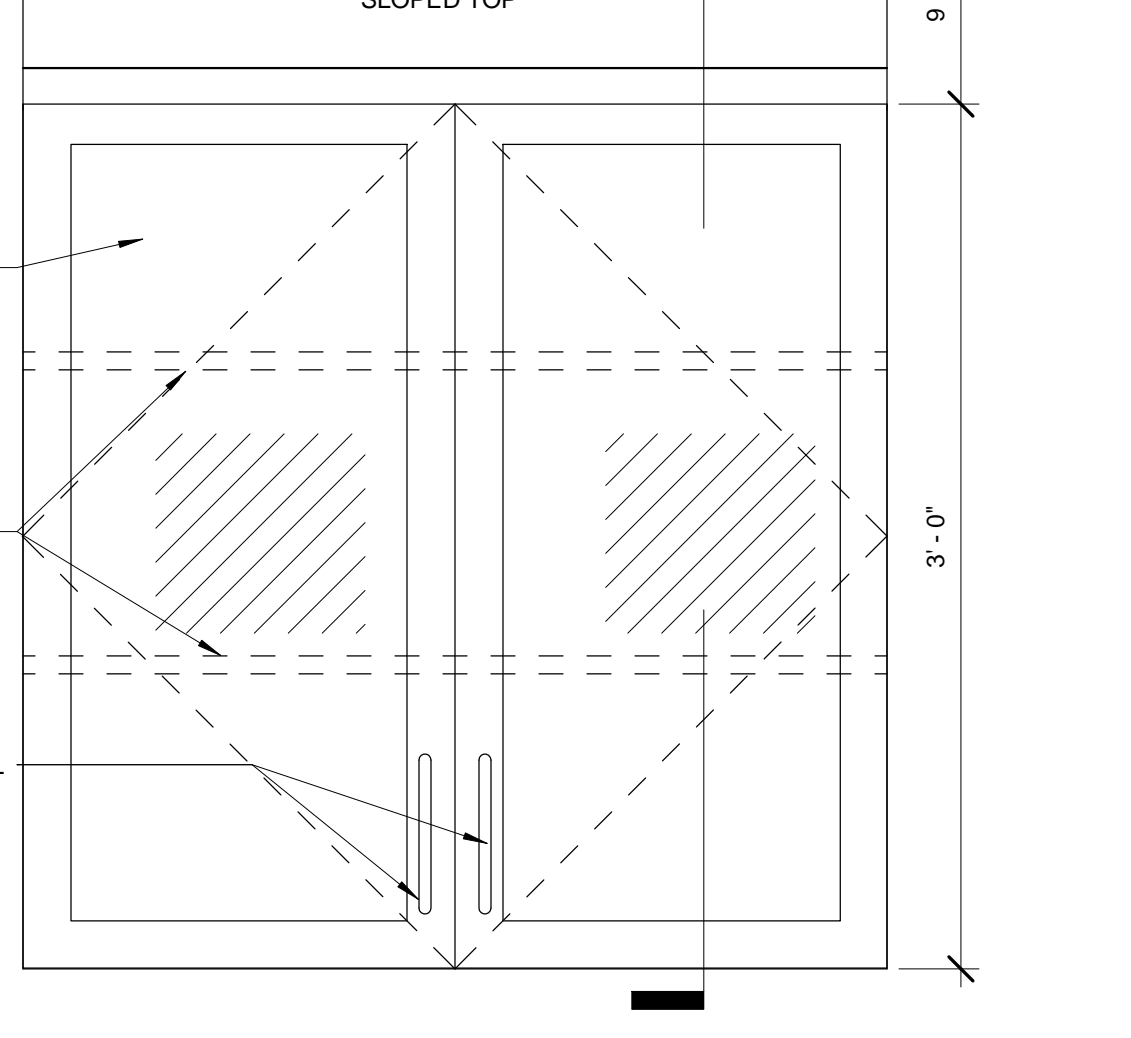
12 SECTION- PEG BOARD
SCALE: 1 1/2" = 1'-0"



8 ELEVATION- PEG BD
SCALE: 1 1/2" = 1'-0"



5 SECTION- WALL CABINET WHA
SCALE: 1 1/2" = 1'-0"



1 ELEVATION- WALL CABINET
SCALE: 1 1/2" = 1'-0"

NIH GRANT NO. 1G20RR031064-01

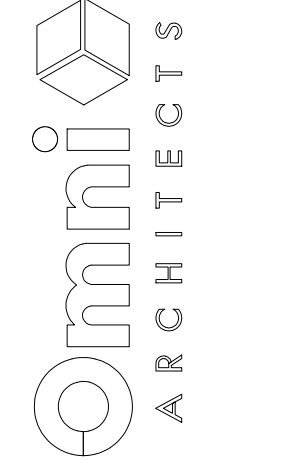
UNIVERSITY OF KENTUCKY- Renovate 4th Floor Sanders Brown Center

CASEWORK DETAIL

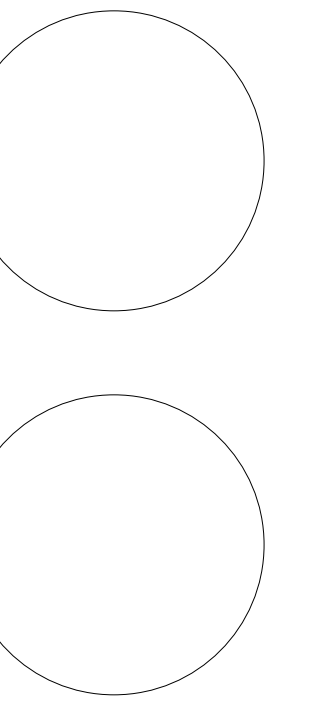
NIH REVIEW

R10.6

212 North Upper Street
Lexington, Kentucky 40507-1001
p 859.252.6664 f 859.253.2358
www.omniarchitects.com



Project Number 1005.00 Date November, 2011 Drawn By MGR Checked By DB Scale As indicated



This Drawing and the Design shown are the property of Omni Architects ©. The reproduction, copying or other use of this Drawing or Design without the written consent of Omni Architects is prohibited.