

ABBREVIATIONS

Table of abbreviations for construction terms, including ADJ. ABOVE FINISHED FLOOR, ALUM. ALUMINUM, ANCH. ANCHOR, APPR. APPROVED, etc.

GRAPHIC SYMBOLS

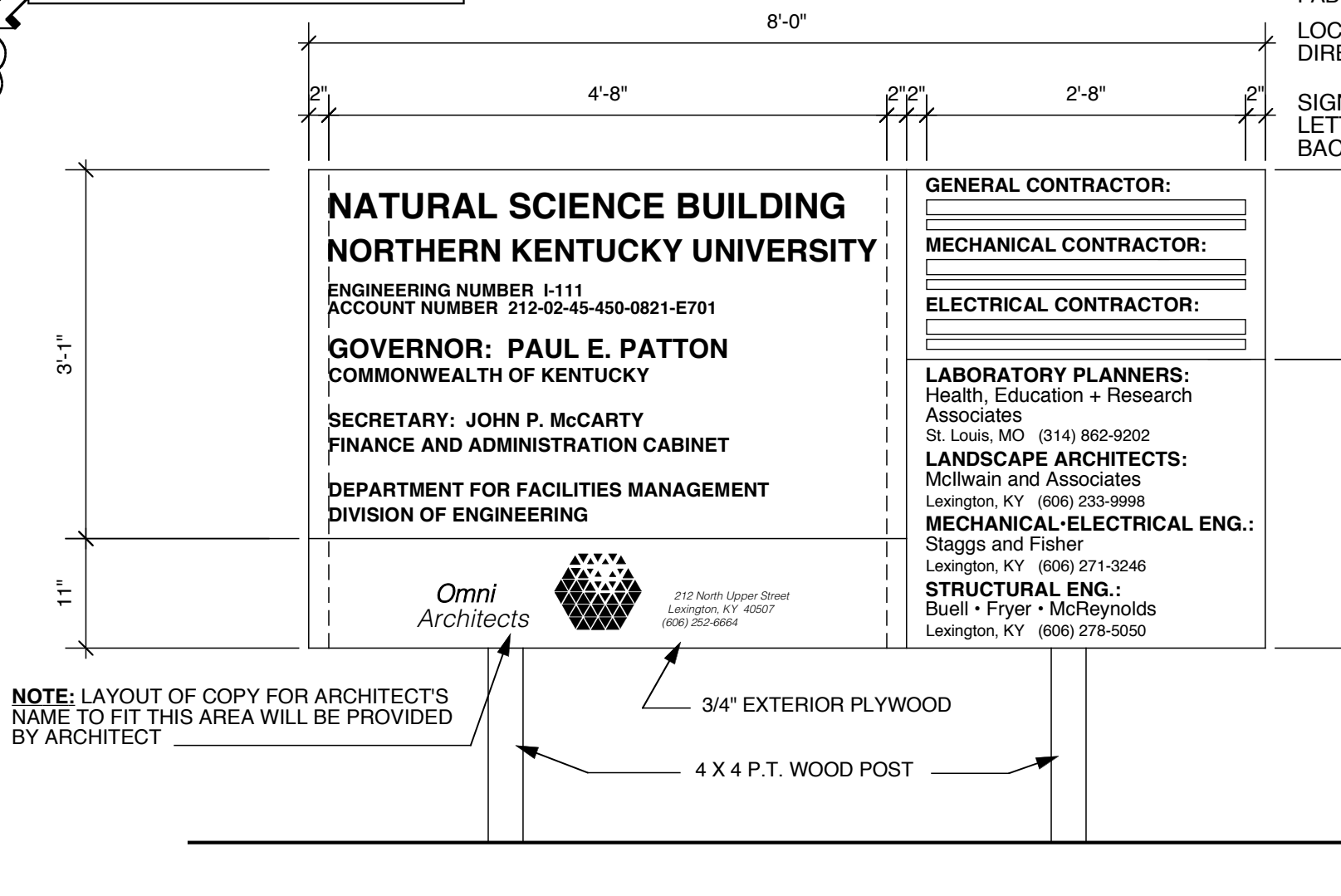
Table of graphic symbols for various construction elements, including FLOOR DRAIN, KEYS, EQUIPMENT INDICATOR, TOILET ACCESSORIES INDICATOR, etc.

WALL TYPES

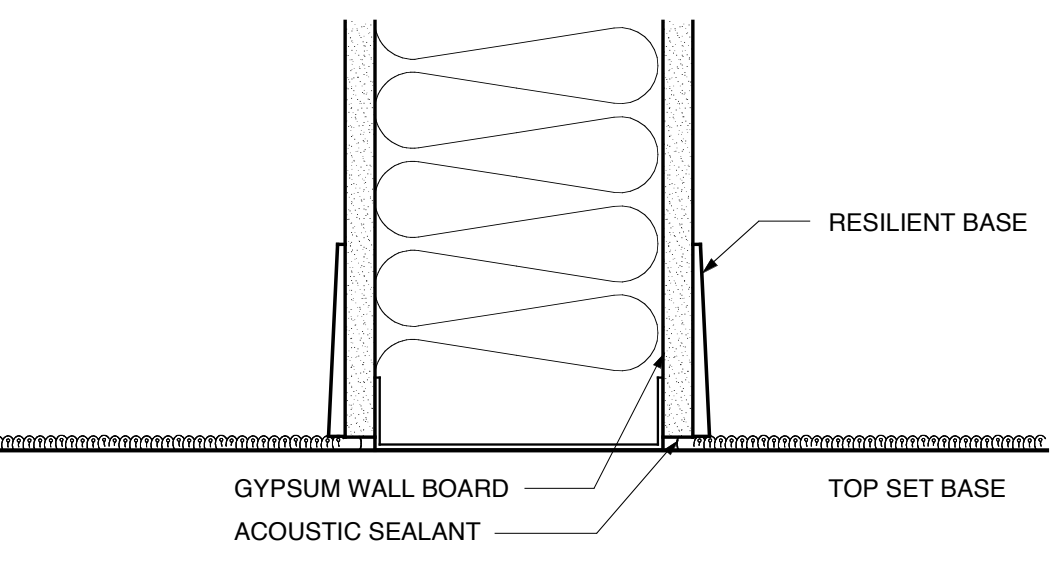
Table detailing wall types, their details, descriptions, and fire ratings. Includes types like exterior wall, interior wall, shaft wall, and chase wall with specific material and construction notes.

SEE RFI 0409 REGARDING REVEALS ON FIRE RATED WALL

TEXT AND GRAPHICS ON SIGN TO BE APPROVED BY OWNER BEFORE FABRICATION



LOCATE SIGN IN FIELD AS DIRECTED BY ARCHITECT



DETAIL @ CONSTRUCTION SIGN 3/4" = 1'-0" ACOUSTIC WALL/BASE 3" = 1'-0"

BUILDING STATISTICS

Table of building statistics including occupancy group (E - Educational Use), construction type (2A), occupancy load (760), and areas for each floor.

FIRE RATINGS - TABLE 602

Table of fire ratings for various wall types and fire separations, including noncombustible exterior walls, fire and party walls, and fire partitions.

GENERAL NOTES

Textual notes regarding dimensions, contractor responsibilities, material specifications, and fire ratings. Includes statements like 'ALL DIMENSIONS SHOWN ON PLANS ARE TO CENTER LINE OF COLUMN...' and 'CONTRACTOR SHALL NOT SCALE DRAWINGS FOR DIMENSIONS.'

MATERIAL SYMBOLS

Table of material symbols for various construction materials, including earth, concrete, steel, wood, and gypsum.

REFER TO CEILING PLAN FOR LOCATION OF RATED WALLS

- List of instructions for fire-rated walls: 1. PROVIDE EXPANDED GASKET BACK GYPSUM BOARD AT REINFORCED JOINTS... 2. PROVIDE GASKETS ON GYPSUM BOARD AT REINFORCED JOINTS... 3. REFER TO COLUMN WRAP DETAILS ON SHEET A-5-10... 4. PROVIDE ACoustic SEALANT AT BASE OF STUD WALLS AT WALL TYPES NOTED WITH STC RATINGS...

LIST OF ALTERNATES

- List of alternate proposals: ADD ALTERNATE NO. 1 - MECHANICAL/ELECTRICAL/LABORATORY ITEMS... ADD ALTERNATE NO. 2 - MISCELLANEOUS ACCESSORIES... ADD ALTERNATE NO. 3 - LABORATORY ITEMS... ADD ALTERNATE NO. 4 - FIT-UP... ADD ALTERNATE NO. 5 - SITE ACCESSORIES...

LINTEL SCHEDULE

Table detailing lintel schedule for openings, showing dimensions and required lintel sizes for different opening dimensions.

Table of STAIR AND BATH (A&B) and STAIR AND ELEVATOR (D&E) specifications, including occupancy loads, dimensions, and gross areas.

RECORD DOCUMENTS: These Record Documents have been prepared based on information provided by others. The Consultant has not verified the accuracy or completeness of this information and shall not be responsible for any errors or omissions that may be incorporated as a result of erroneous information provided by others.

Omni ARCHITECTS 12/1/02 DATE

PROJECT INFORMATION

NORTHERN KENTUCKY UNIVERSITY NATURAL SCIENCE BUILDING

Project information details including drawing number A-0.1, revision table, and approval signatures from Michael W. Jenkins and other project stakeholders.

THIS LINTEL SCHEDULE IS FOR ALL MASONRY OPENINGS SHOWN ON THE ARCHITECTURAL MECHANICAL & ELECTRICAL DRAWINGS. BOTTOM PLATE WIDTH MAY VARY FOR PARTICULAR OPENINGS. VERIFY WITH SHOP DRAWINGS.