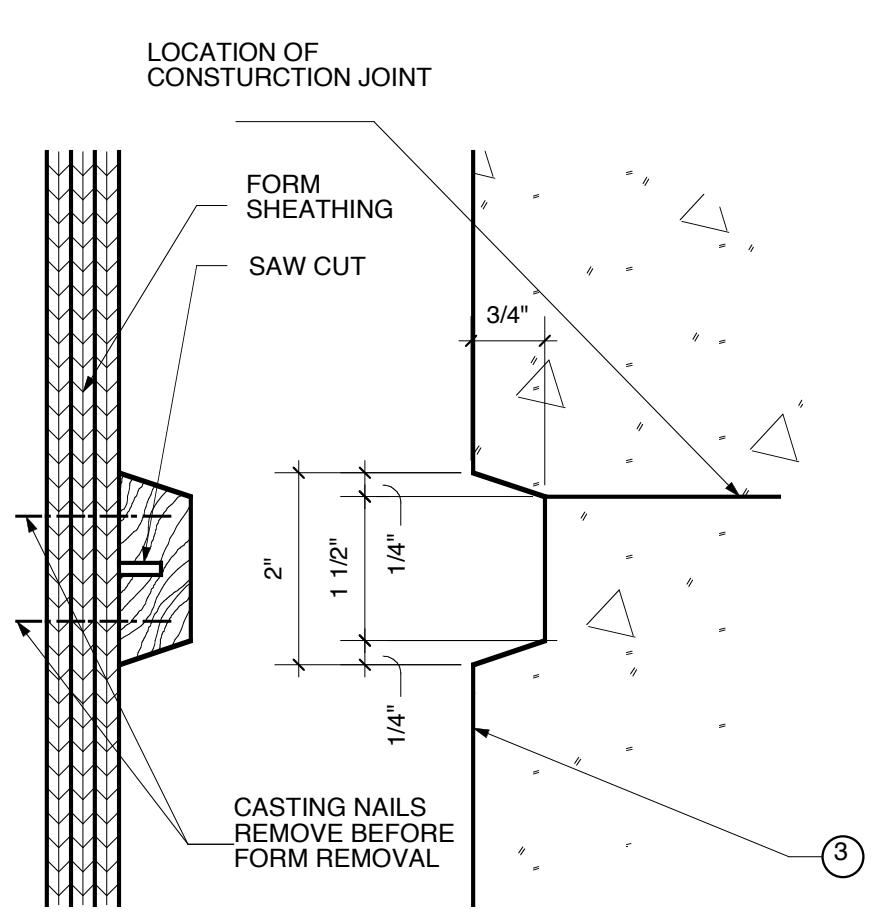
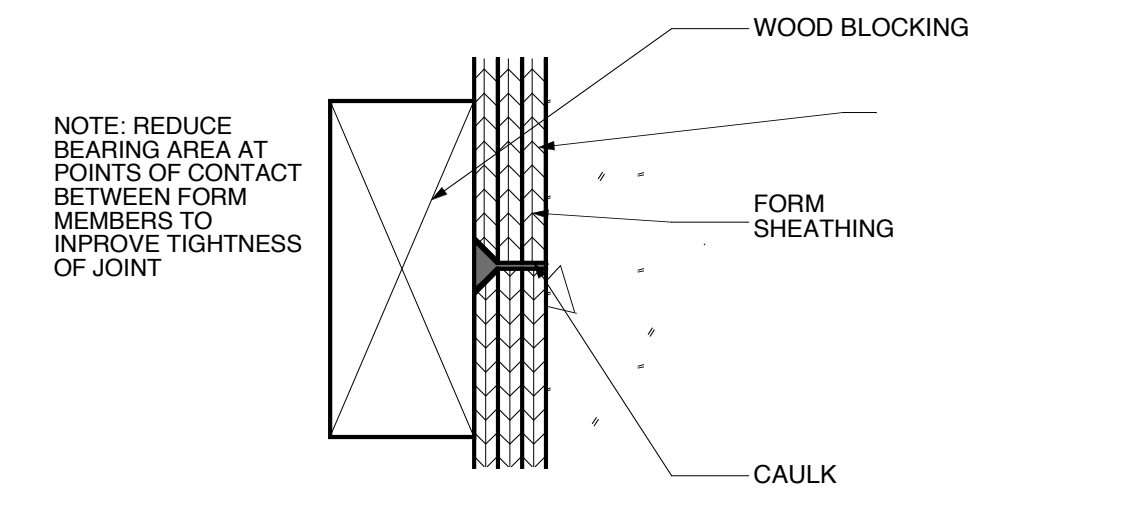


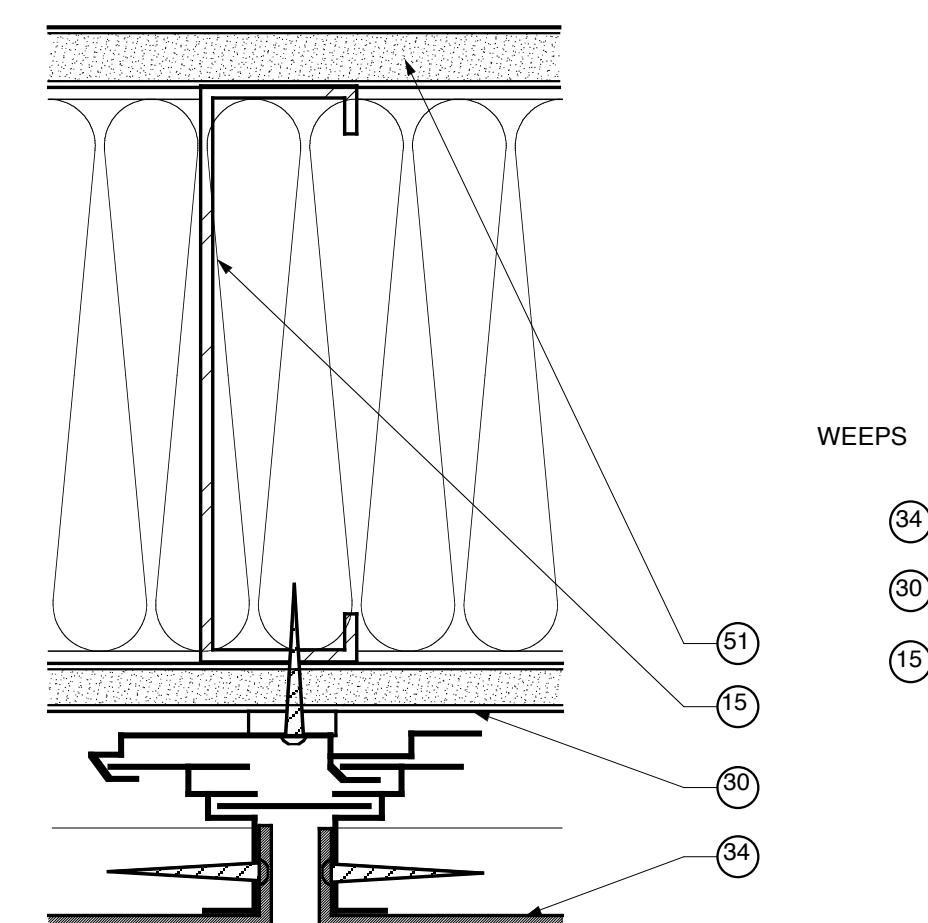
**4 PANEL CONFIGURATION**  
3/4" = 1'-0"



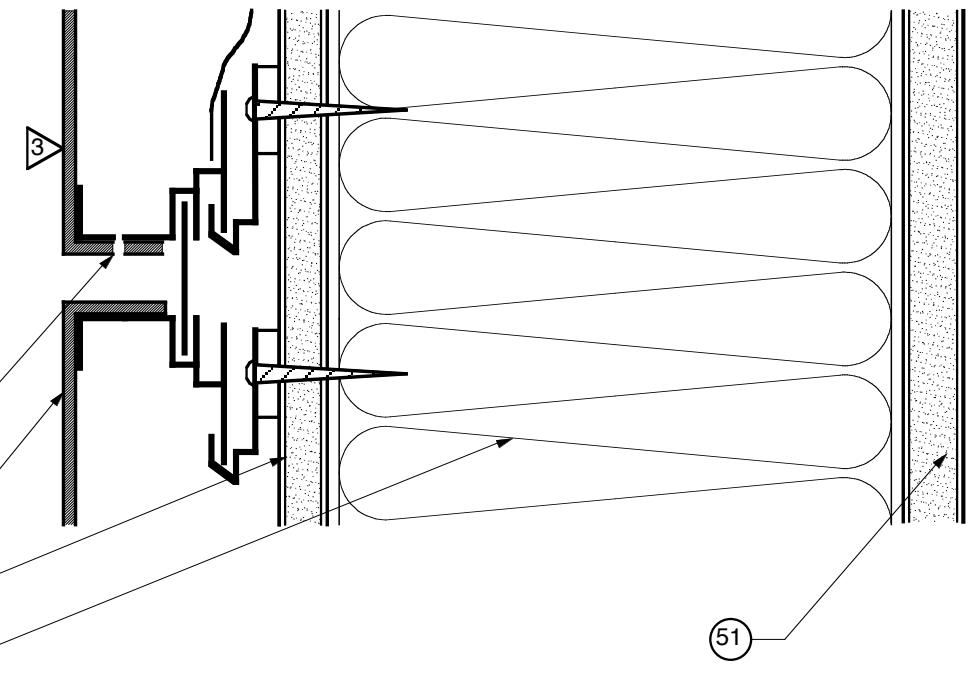
**7 RUSTICATION JOINT**  
6" = 1'-0"



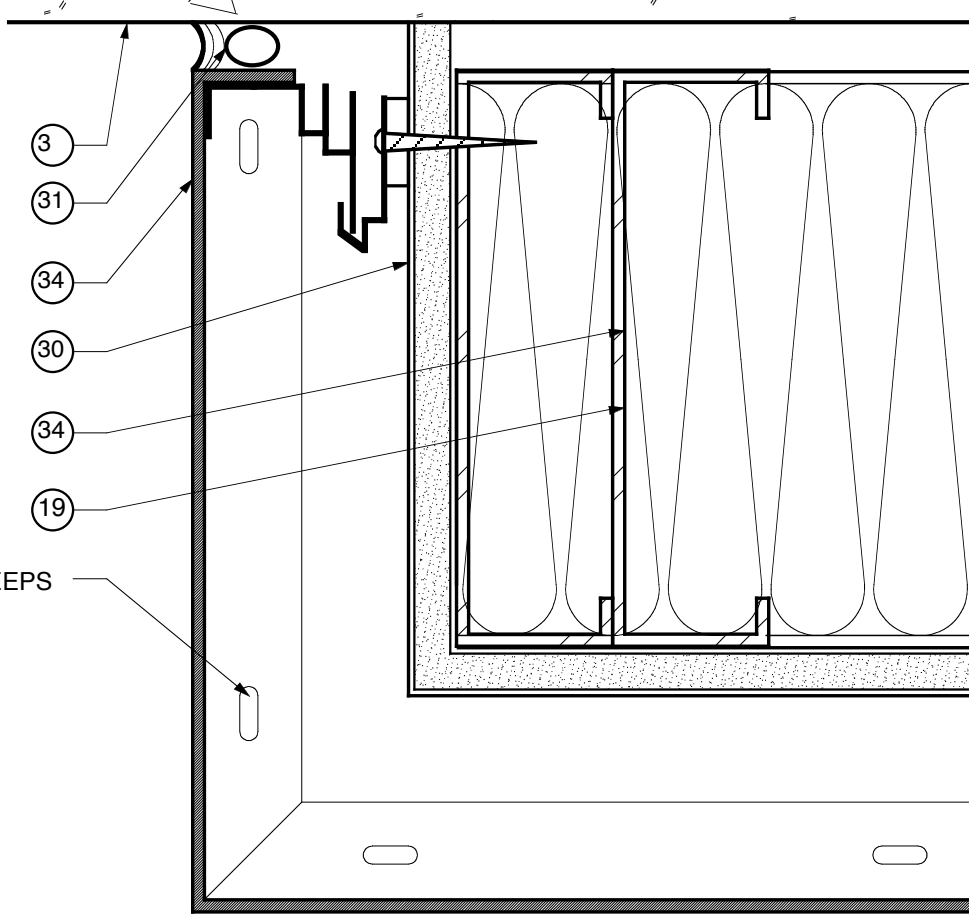
**10 FORM JOINT**  
6" = 1'-0"



**8 HORIZONTAL JOINT**  
6" = 1'-0"



**9 VERTICAL JOINT**  
6" = 1'-0"



**15 DETAIL @ CORNER**  
6" = 1'-0"

TRANSVERSE SECTION AT SOUTH WING LOOKING EAST

**16 TRANSVERSE SECTION AT SOUTH WING LOOKING EAST**  
1/4" = 1'-0"

- 1 STRUCTURAL CONCRETE FOUNDATION - SEE STRUCTURAL DRAWINGS FOR DIMENSIONS, BEARING POINTS AND REINFORCING
- 2 STRUCTURAL CONCRETE SLAB - SEE STRUCTURAL DRAWINGS FOR DIMENSIONS, REINFORCING, AND ENGINEERED FILL
- 3 EXPOSED CAST-IN-PLACE CONCRETE SURFACE - DO NOT PAINT
- 4 EXPOSED CAST-IN-PLACE CONCRETE WEARING SLAB OVER RIGID INSULATION OVER MEMBRANE FLASHING OVER STRUCTURAL CONCRETE SLAB
- 5 LIGHTWEIGHT CONCRETE TOPPING OVER STRUCTURAL CONCRETE SLAB - SLOPE AT 1/4" PER FOOT TO DRAIN AS SHOWN ON ROOF PLAN
- 6 EXPOSED CAST-IN-PLACE CONCRETE WITH ARCHITECTURAL FINISH AND RUSTICATION JOINTS
- 7 EXPOSED CAST-IN-PLACE CONCRETE CONCRETE REVEAL FOR SURFACE-MOUNTED LIGHT FIXTURE
- 8 CONCRETE MASONRY UNITS WITH FINISH SCHEDULE FOR FINISH
- 9 EXPOSED STEEL STRUCTURE WITH RITUMESCENT PAINTED FINISH - SEE STRUCTURAL DRAWINGS FOR SIZE AND DIMENSIONS
- 10 EXPOSED STEEL STRUCTURE WITH PAINTED FINISH - SEE STRUCTURAL DRAWINGS FOR SIZE AND DIMENSIONS
- 11 STEEL STRUCTURE - SEE STRUCTURAL DRAWINGS FOR SIZE AND DIMENSIONS
- 12 EXPOSED STEEL STRUCTURE WITH PAINTED FINISH - SEE STRUCTURAL DRAWINGS FOR SIZE AND DIMENSIONS
- 13 METAL ROOF DECK - SEE STRUCTURAL DRAWINGS FOR DEPTH AND GAUGE
- 14 STEEL EDGE ANGLE - SEE STRUCTURAL DRAWINGS FOR SIZE AND DIMENSIONS
- 15 1/8 GAUGE COLD-FORMED METAL STUDS AT 16" ON CENTER
- 16 1/8 GAUGE COLD-FORMED FRAMING MEMBER TO STEEL STRUCTURE WITH SLIP JOINT FOR DEFLECTION
- 17 SECURE EACH COLD-FORMED FRAMING MEMBER TO STEEL STRUCTURE WITH SLIP JOINT FOR DEFLECTION
- 18 SLOPED CONCRETE SURFACE
- 19 PROVIDE DOUBLE STUDS AT THIS LOCATION, TYPICAL
- 20 METAL STUDS AT 16" ON CENTER
- 21 METAL FRAMING AT 16" ON CENTER
- 22 EXTERIOR ALUMINUM GUARDRAIL WITH BLACK FLUOROPOLYMER FINISH - 42" HIGH
- 23 METAL HANDRAIL / GUARDRAIL WITH PAINTED FINISH
- 24 HOLLOW METAL DOOR AND FRAME WITH PAINTED FINISH
- 25 FIRE-TREATED WOOD BLOCKING
- 26 SHM AS REQUIRED AT PERIMETER
- 27 SOLID SURFACING WINDOW
- 28 APPROXIMATE FINISH GRADE - SEE SITE DRAWINGS FOR ELEVATION
- 29 AIR INFILTRATION BARRIER WITH TAPED JOINTS OVER 1/2" GLASSMATT-FACED EXTERIOR GYPSUM SHEATHING ON EXTERIOR FACE OF WALL AND 6 MIL VAPOR BARRIER ON INTERIOR FACE OF WALL - FILL WALL CAVITY WITH BATT INSULATION
- 30 BACKER ROD AND SEALANT IN THIS LOCATION ONLY
- 31 COMPOSITE ALUMINUM SPANDREL PANEL WITH FINISH TO MATCH SURROUNDING FRAME
- 32 COMPOSITE ALUMINUM PANEL SYSTEM WITH FLUOROPOLYMER FINISH (COLOR SELECTED BY ARCHITECT) WITH CONCEALED FASTENERS, ALUMINUM MOUNTING TRACKS, AND SHIMS AS REQUIRED - EACH PANEL TO HAVE PROTECTIVE BARRIER WHERE REQUIRED BY ROOFING MANUFACTURER
- 33 COMPOSITE ALUMINUM PANEL SYSTEM WITH FLUOROPOLYMER FINISH (COLOR SELECTED BY ARCHITECT) WITH CONCEALED FASTENERS, ALUMINUM MOUNTING TRACKS, AND SHIMS AS REQUIRED - EACH PANEL TO HAVE PROTECTIVE BARRIER WHERE REQUIRED BY ROOFING MANUFACTURER
- 34 COMPOSITE ALUMINUM PANEL SYSTEM WITH FLUOROPOLYMER FINISH (COLOR SELECTED BY ARCHITECT) WITH CONCEALED FASTENERS, ALUMINUM MOUNTING TRACKS, AND SHIMS AS REQUIRED - EACH PANEL TO HAVE PROTECTIVE BARRIER WHERE REQUIRED BY ROOFING MANUFACTURER
- 35 COMPOSITE ALUMINUM PANEL SYSTEM WITH FLUOROPOLYMER FINISH (COLOR SELECTED BY ARCHITECT) WITH CONCEALED FASTENERS, ALUMINUM MOUNTING TRACKS, AND SHIMS AS REQUIRED - EACH PANEL TO HAVE PROTECTIVE BARRIER WHERE REQUIRED BY ROOFING MANUFACTURER
- 36 EXTRUDED ALUMINUM COPING WITH FLUOROPOLYMER FINISH TO MATCH ALUMINUM COMPOSITE PANEL COLOR
- 37 EXTRUDED ALUMINUM FASCIA/ROOF EDGE WITH FLUOROPOLYMER FINISH TO MATCH ALUMINUM COMPOSITE PANEL COLOR
- 38 HOT-ASPHALT-APPLIED MULTI-PLY SBS MODIFIED BITUMEN ROOFING SYSTEM OVER POLYISOCYANURATE INSULATION BOARD - INSULATION TO BE APPROVED BY ROOFING MANUFACTURER - PROVIDE PROTECTIVE BARRIER WHERE REQUIRED BY ROOFING MANUFACTURER
- 39 SLOPE RIGID INSULATION BOARD AT 1/4" PER FOOT TO DRAIN AS SHOWN ON ROOF PLAN - R-20 AVERAGE
- 40 1/2" GLASSMATT-FACED GYPSUM THERMAL BARRIER BOARD
- 41 THERMALLY-BROKEN ALUMINUM STOREFRONT FRAMING SYSTEM WITH BLACK FLUOROPOLYMER FINISH
- 42 TRANSLUCENT COMPOSITE FIBERGLASS PANELS WITH ALUMINUM FRAME WITH FLUOROPOLYMER FINISH TO MATCH ALUMINUM COMPOSITE PANEL COLOR
- 43 THERMALLY-BROKEN ALUMINUM STOREFRONT FRAMING SYSTEM WITH ALUMINUM COMPOSITE PANEL COLOR
- 44 THERMALLY-BROKEN ALUMINUM STOREFRONT FRAMING SYSTEM WITH ALUMINUM COMPOSITE PANEL COLOR
- 45 THERMALLY-BROKEN ALUMINUM STOREFRONT FRAMING SYSTEM WITH ALUMINUM COMPOSITE PANEL COLOR
- 46 THERMALLY-BROKEN ALUMINUM STOREFRONT FRAMING SYSTEM WITH ALUMINUM COMPOSITE PANEL COLOR
- 47 THERMALLY-BROKEN ALUMINUM STOREFRONT FRAMING SYSTEM WITH ALUMINUM COMPOSITE PANEL COLOR
- 48 1" INSULATING CLEAR GLAZING WITH LOW-EMISSION COATING
- 49 1" INSULATING GREY TINTED GLAZING WITH LOW-EMISSION COATING
- 50 5/8" GYPSUM BOARD OVER VAPOR BARRIER OVER RIGID INSULATION OVER 2" METAL FURRING
- 51 5/8" GYPSUM BOARD - SEE FINISH SCHEDULE FOR FINISHES AND WALL TYPE SCHEDULE FOR RATED MATERIALS
- 52 5/8" GYPSUM BOARD BEYOND
- 53 SUSPENDED ACOUSTIC CEILING SYSTEM WITH 2'x2' PANELS - SEE FINISH SCHEDULE FOR PANEL TYPES
- 54 3/16" TAPERED RESILIENT BASE - SEE SCHEDULE FOR TYPE
- 55 WALL BASE - SEE SCHEDULE FOR TYPE
- 56 STEEL ACOUSTIC LOUVER WITH FLUOROPOLYMER FINISH TO MATCH ALUMINUM COMPOSITE PANEL COLOR
- 57 LABORATORY CASEWORK - SEE ENLARGED PLANS AND ELEVATIONS FOR CONFIGURATION AND DIMENSIONS
- 58 LIGHTWEIGHT CONCRETE TOPPING OVER STRUCTURAL METAL DECK SLOPE AT 1/4" PER FOOT TO DRAIN AS SHOWN ON ROOF PLAN
- 59 EXPOSED CONCRETE FLOOR SLAB WITH TROWEL FINISH AND CLEAR HARDENER / SEALER
- 60 8" HIGH SURFACE MOUNTED CAST ALUMINUM LETTERS / NUMBERS
- 61 COMPOSITE DRAINAGE / PROTECTION BOARD WITH INTEGRAL FILTER FABRIC OVER RUBBERIZED ASPHALT WATERPROOFING MEMBRANE - PROVIDE FOUNDATION DRAINS AS SHOWN
- 62 5/8" GYPSUM BOARD OVER METAL FRAMING AT 16" ON CENTER
- 63 STRUCTURAL CONCRETE FRAME AND SLAB - SEE STRUCTURAL DRAWINGS FOR DIMENSIONS AND REINFORCING
- 64 EXPOSED STEEL STAIR SYSTEM WITH PAINTED FINISH - FILL STEEL TREAD PANS WITH CONCRETE AND PROVIDE 1 1/2" DIAMETER PIPE HANDRAILS AND GUARDRAILS AT 42" ABOVE FLOOR
- 65 FLOOR FINISH - SEE ROOM FINISH SCHEDULE FOR TYPE

**11 SNAP PLUG** 6" = 1'-0" **12 JOINT @ SITE WALLS** 6" = 1'-0" **14 WINDOW ELEVATION** 3" = 1'-0"

**GENERAL NOTES**

- REFER TO A-10 SHEETS FOR ALL LAB CASEWORK AND FUME HOOD LOCATIONS
- REFER TO MEP SHEETS FOR ALL DUCTS, PIPES, ETC.

		<b>REVISIONS</b> DATE 1 2 3 4 5 6 7 8 9		<b>NORTHERN KENTUCKY UNIVERSITY</b> <b>NATURAL SCIENCE BUILDING</b> RECORD DATE DRAWN BY <b>MB,JB,VMP</b> CHECKED BY <b>MWJ</b> A & E FILE #		COMMONWEALTH OF KENTUCKY FINANCE AND ADMINISTRATION CABINET DIVISION OF ENGINEERING DEPARTMENT FOR FACILITIES MANAGEMENT FRANKFORT, KENTUCKY <b>A-3.7</b> REVIEWED DIV. OF ENGR. ENGR. FILE # <b>I-111</b>	
DATE <b>6/99</b> AUTHORIZED AGENT DIVISION OF ENGINEERING		APPROVED FOR PROGRAM CONCEPT ONLY DATE		APPROVED FOR PROGRAM CONCEPT ONLY DATE		Omni Architects	

**A-3.7**