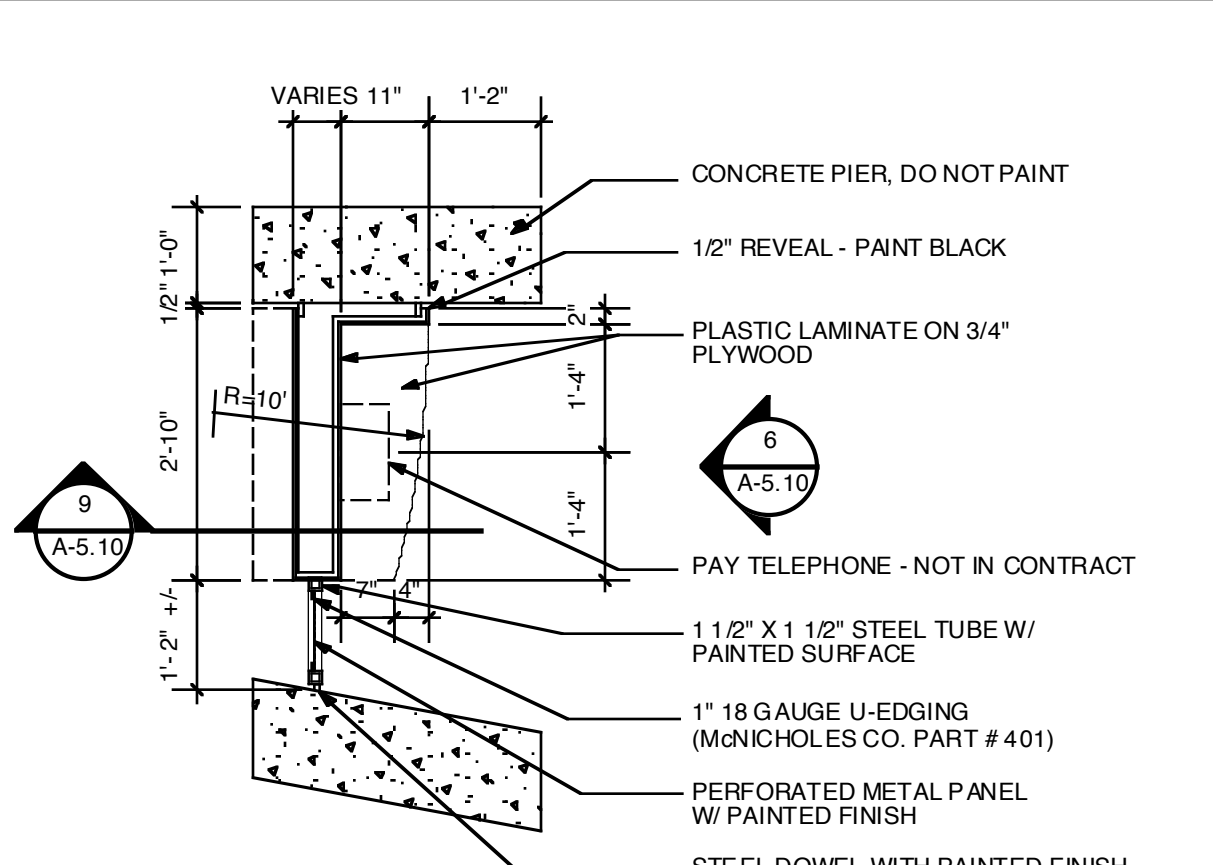
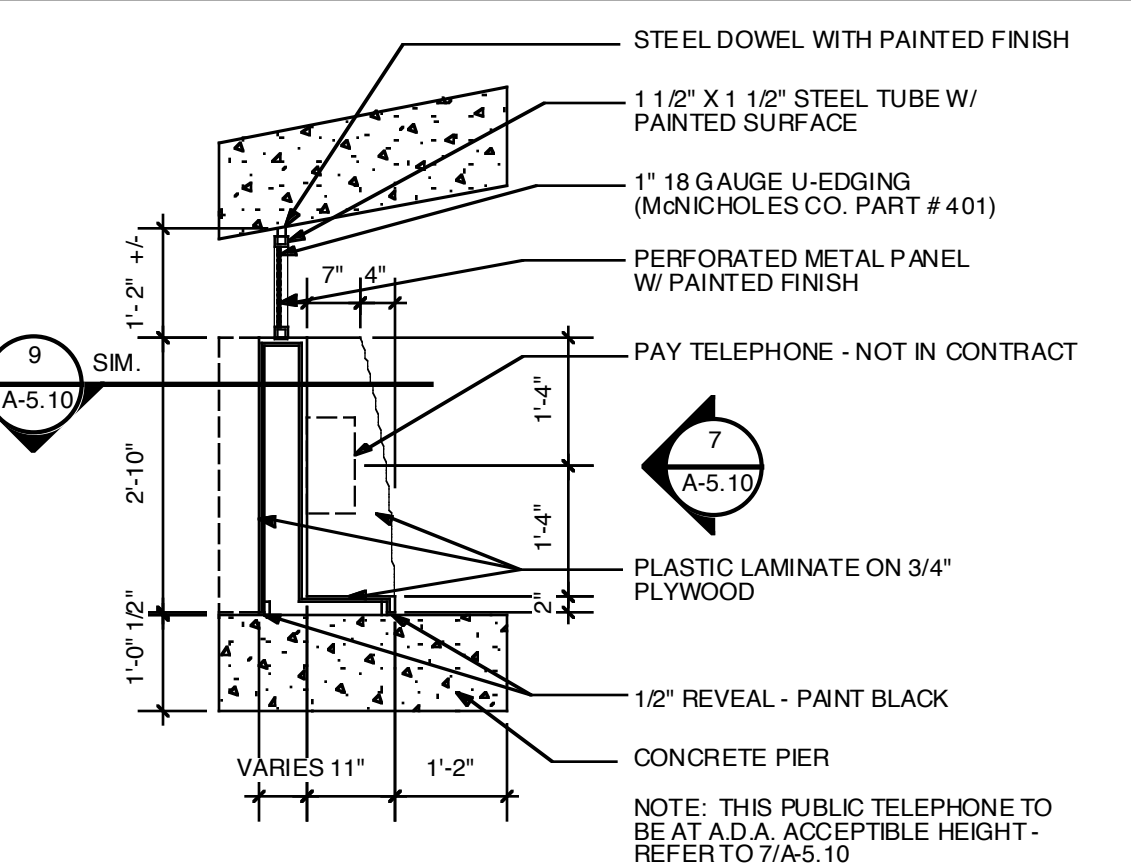


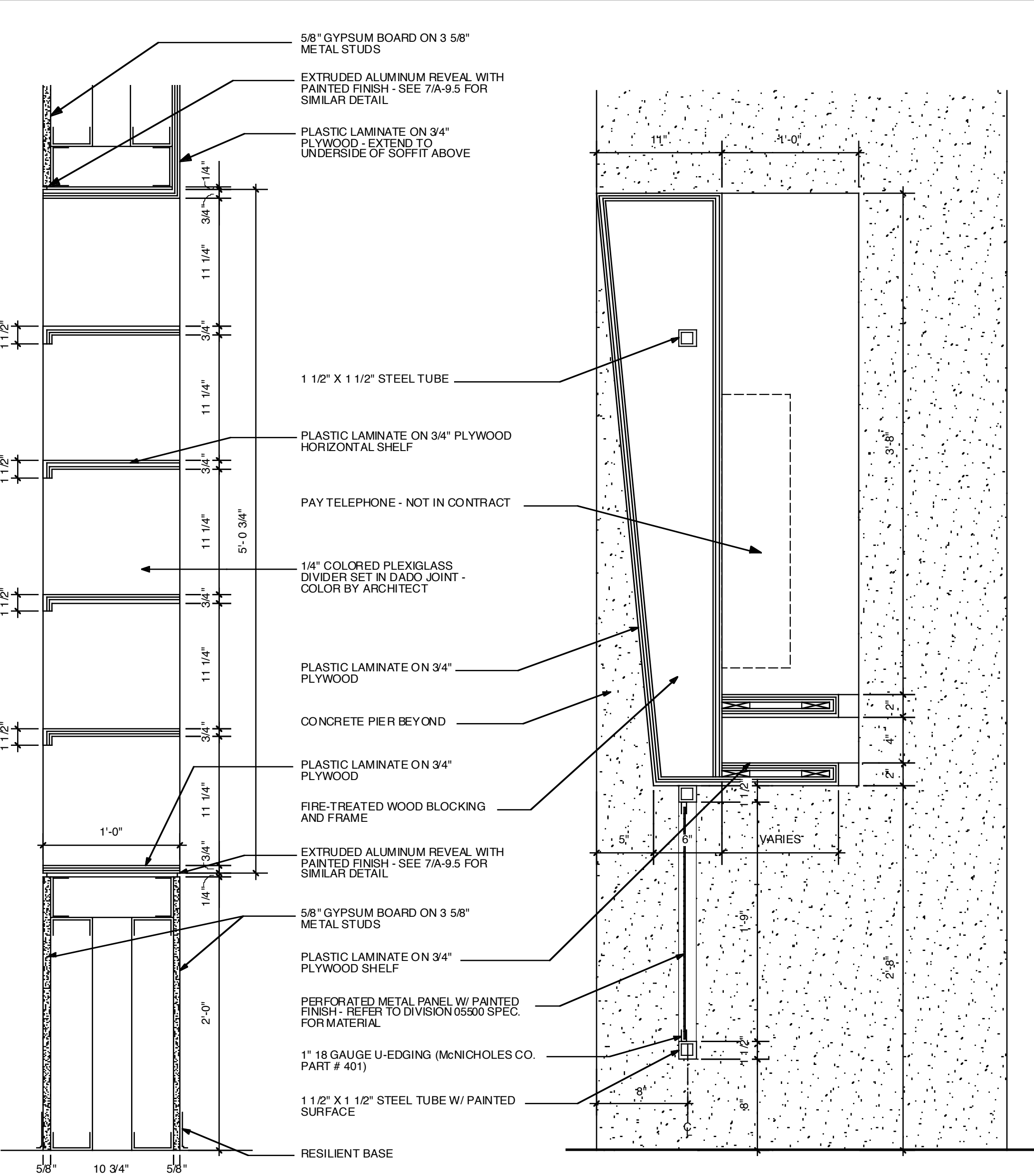
**1 CASEWORK DETAIL**  
1/2" = 1'-0"



**2 CASEWORK DETAIL**  
1/2" = 1'-0"

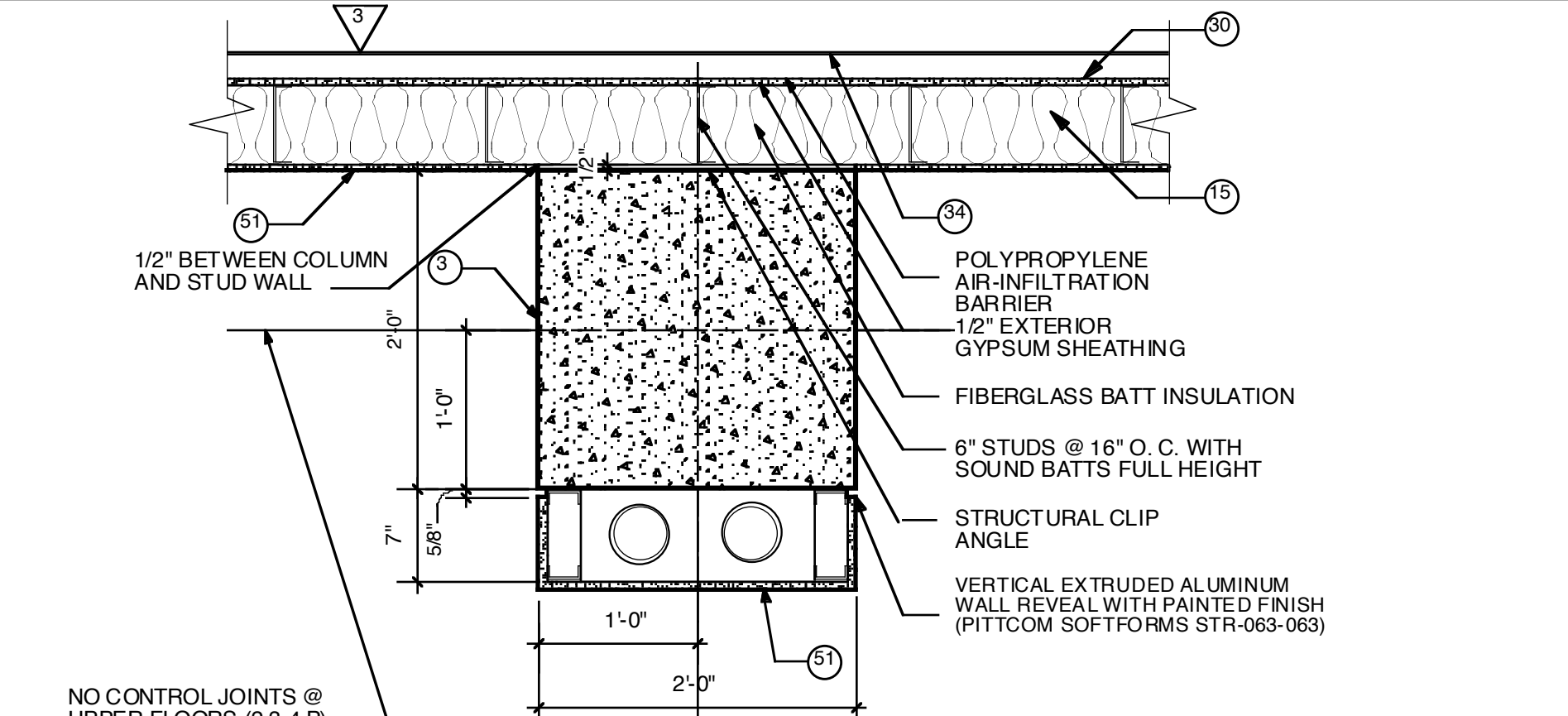


**3 CASEWORK DETAIL**  
1/2" = 1'-0"

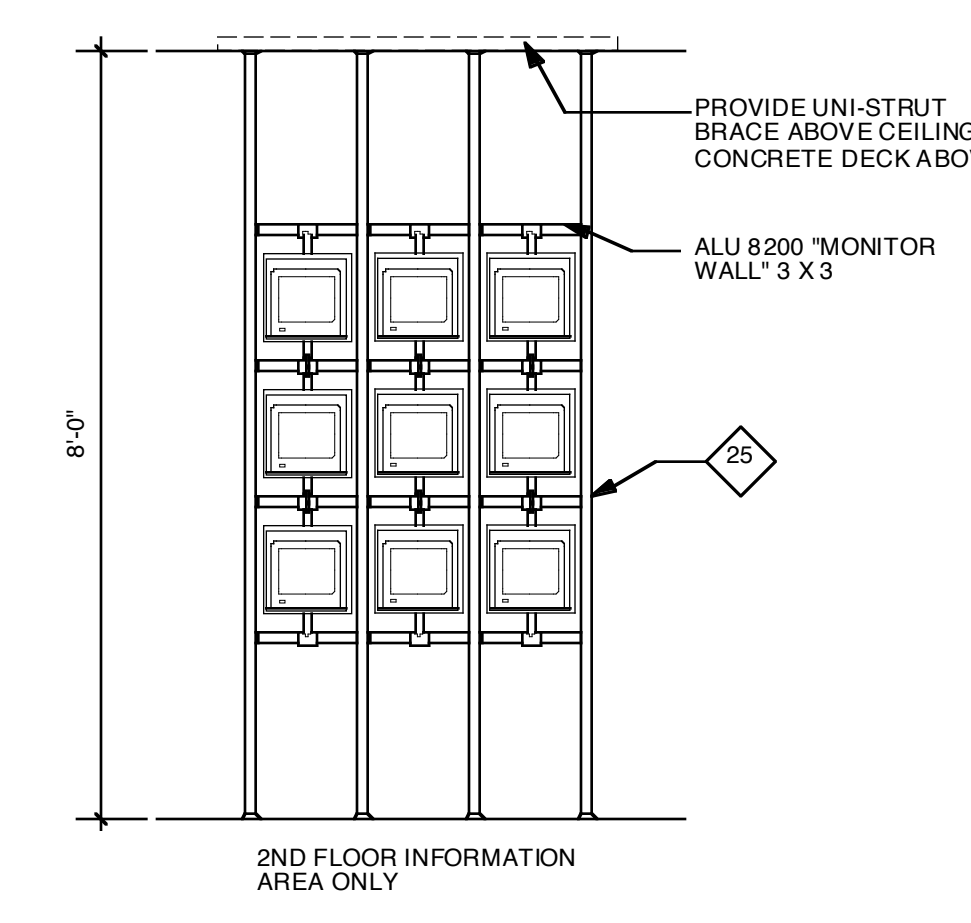


**4 CASEWORK DETAIL**  
1/2" = 1'-0"

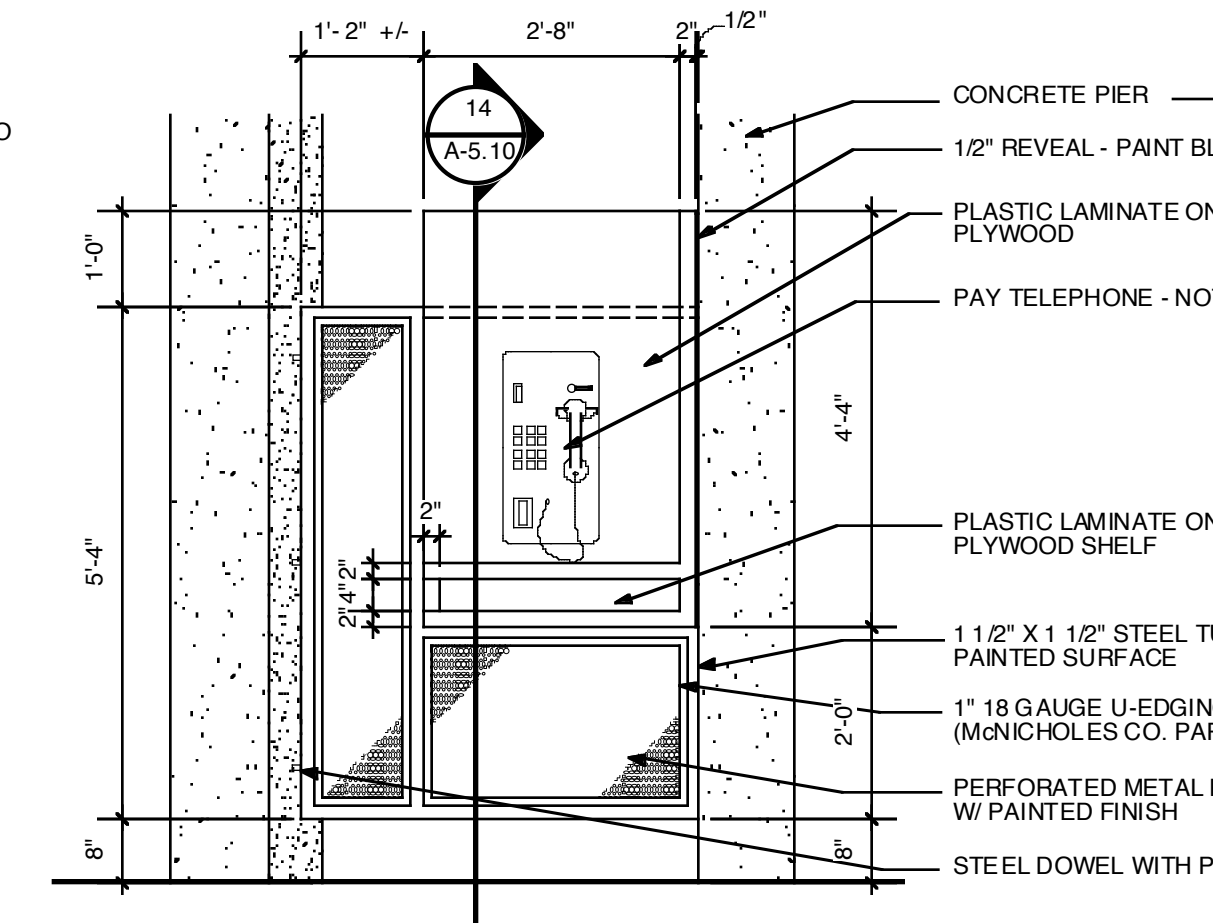
**5 CASEWORK DETAIL**  
1/2" = 1'-0"



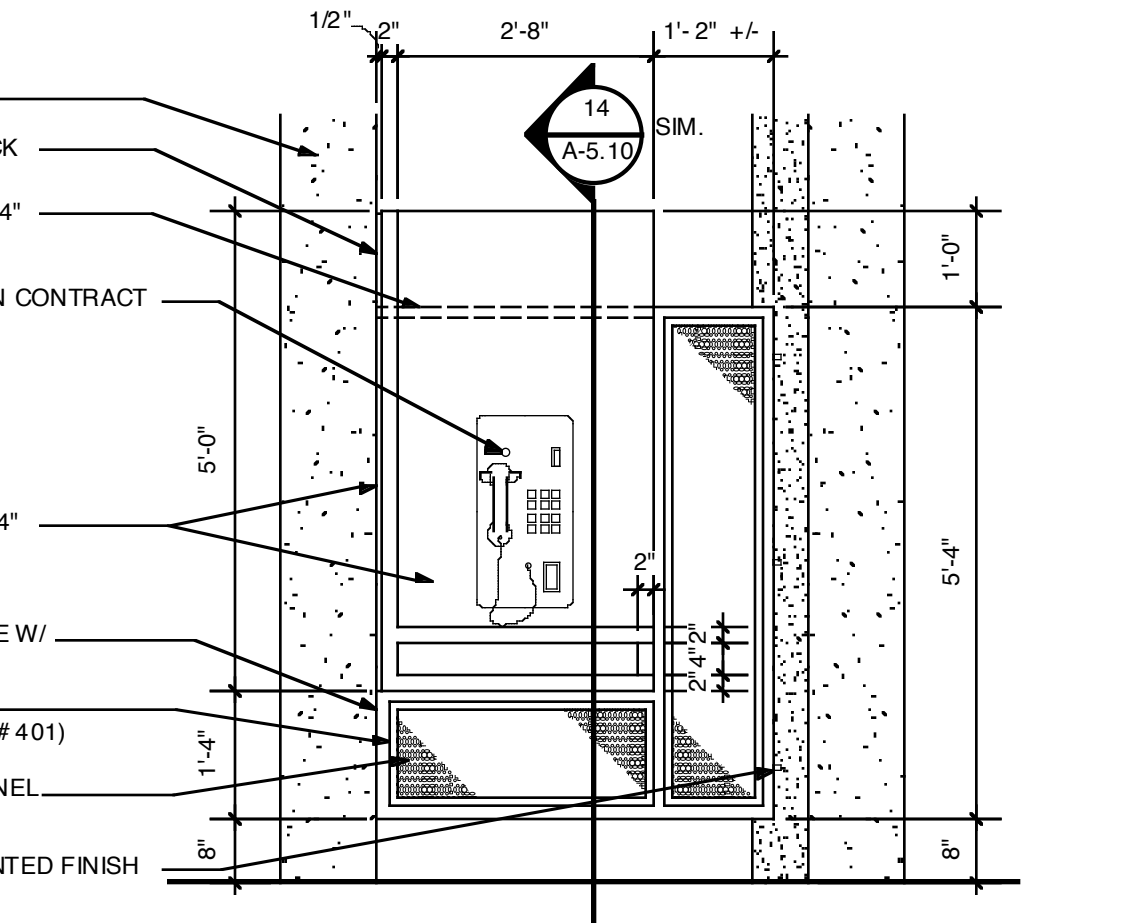
**5 EXTERIOR WALL COLUMN CHASE**  
1" = 1'-0"



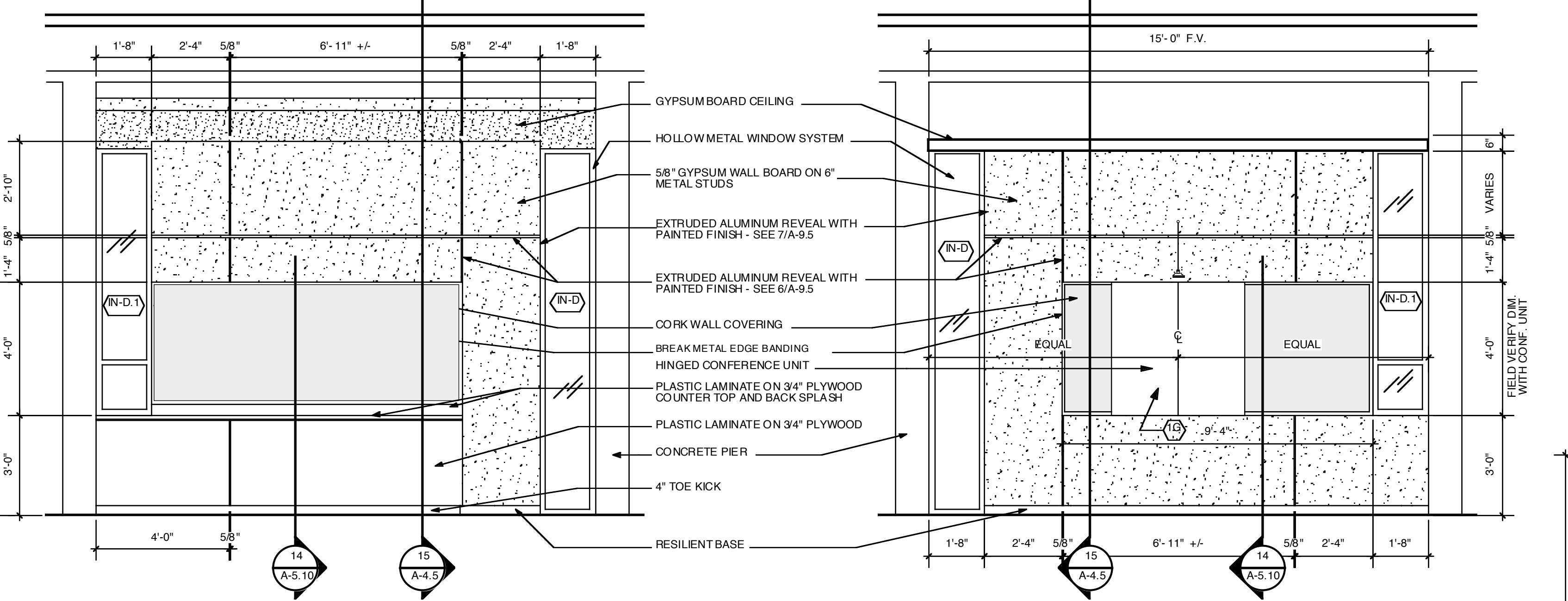
**4 CASEWORK ELEVATION**  
1/2" = 1'-0" ADD. ALT. NO. 2



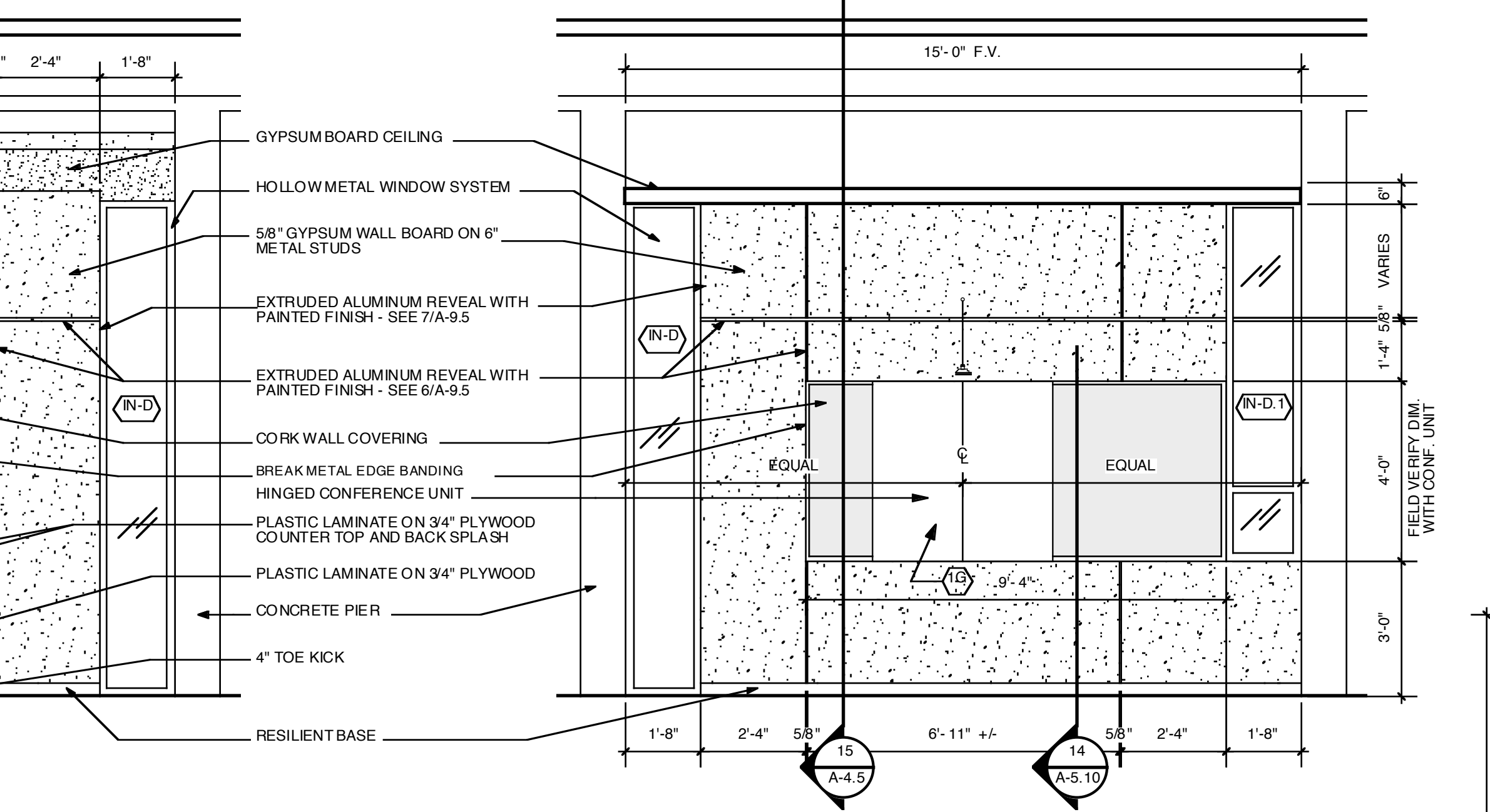
**6 CASEWORK ELEVATION**  
1/2" = 1'-0"



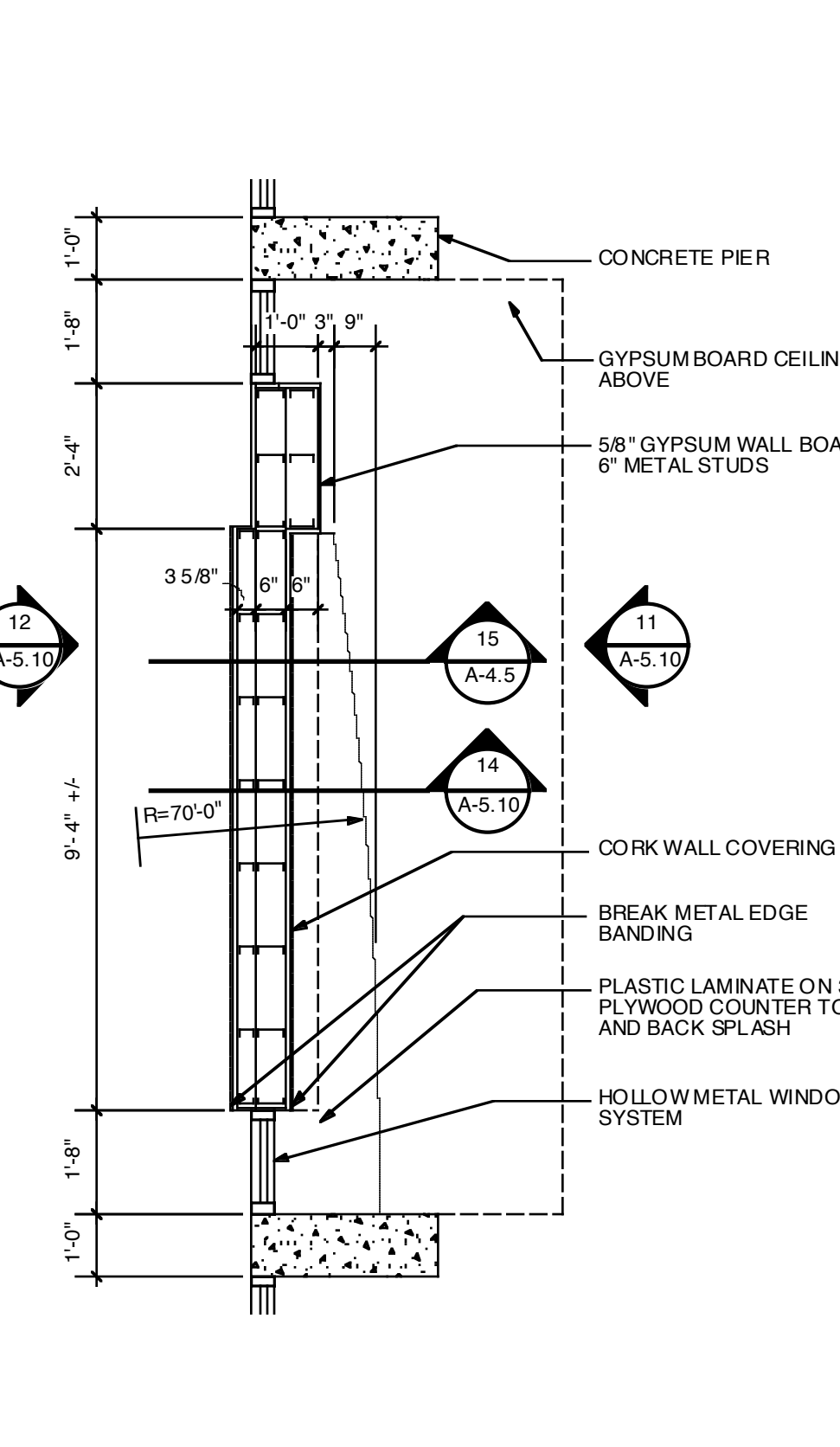
**7 CASEWORK ELEVATION**  
1/2" = 1'-0"



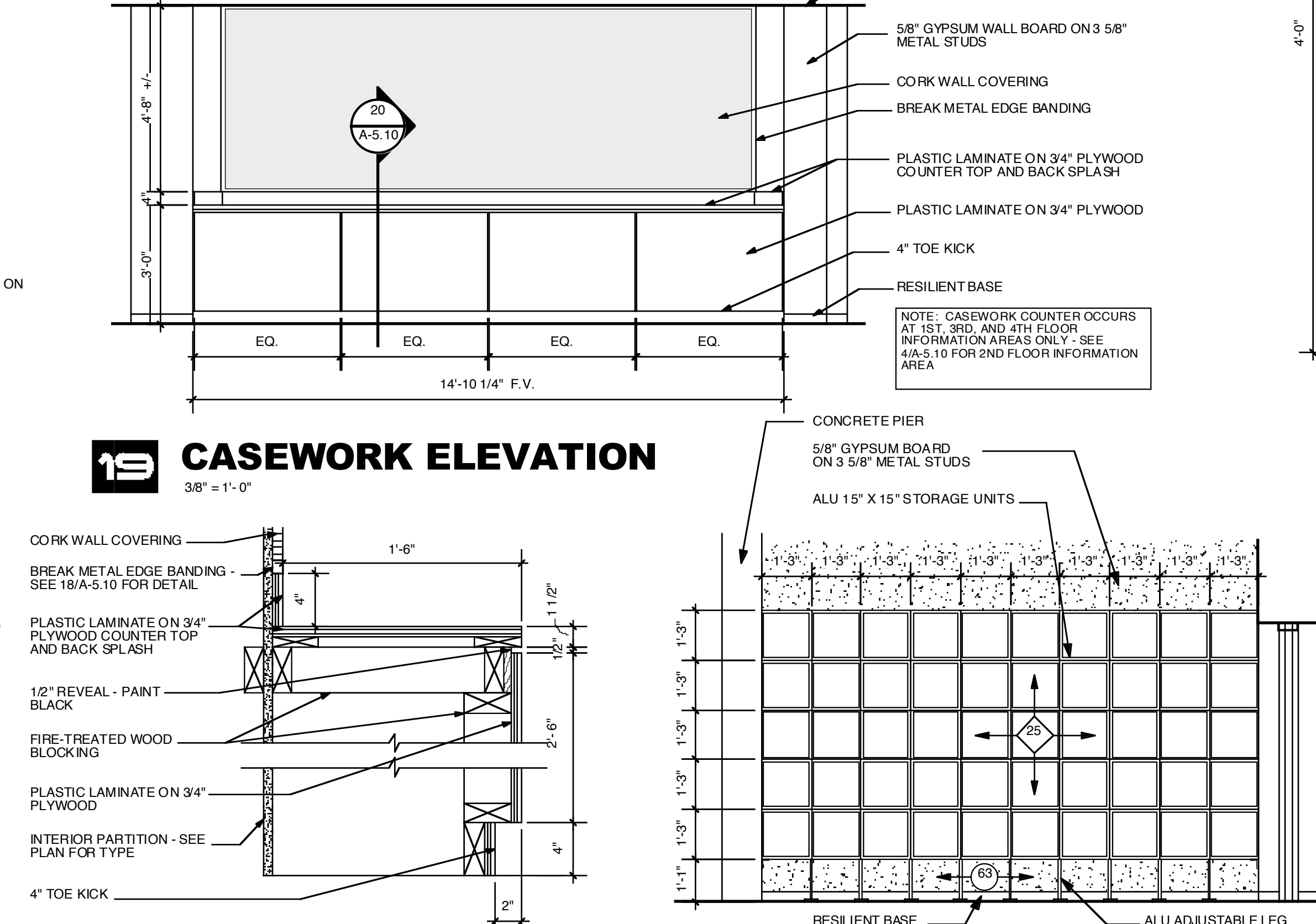
**11 INTERIOR ELEVATION**  
3/8" = 1'-0"



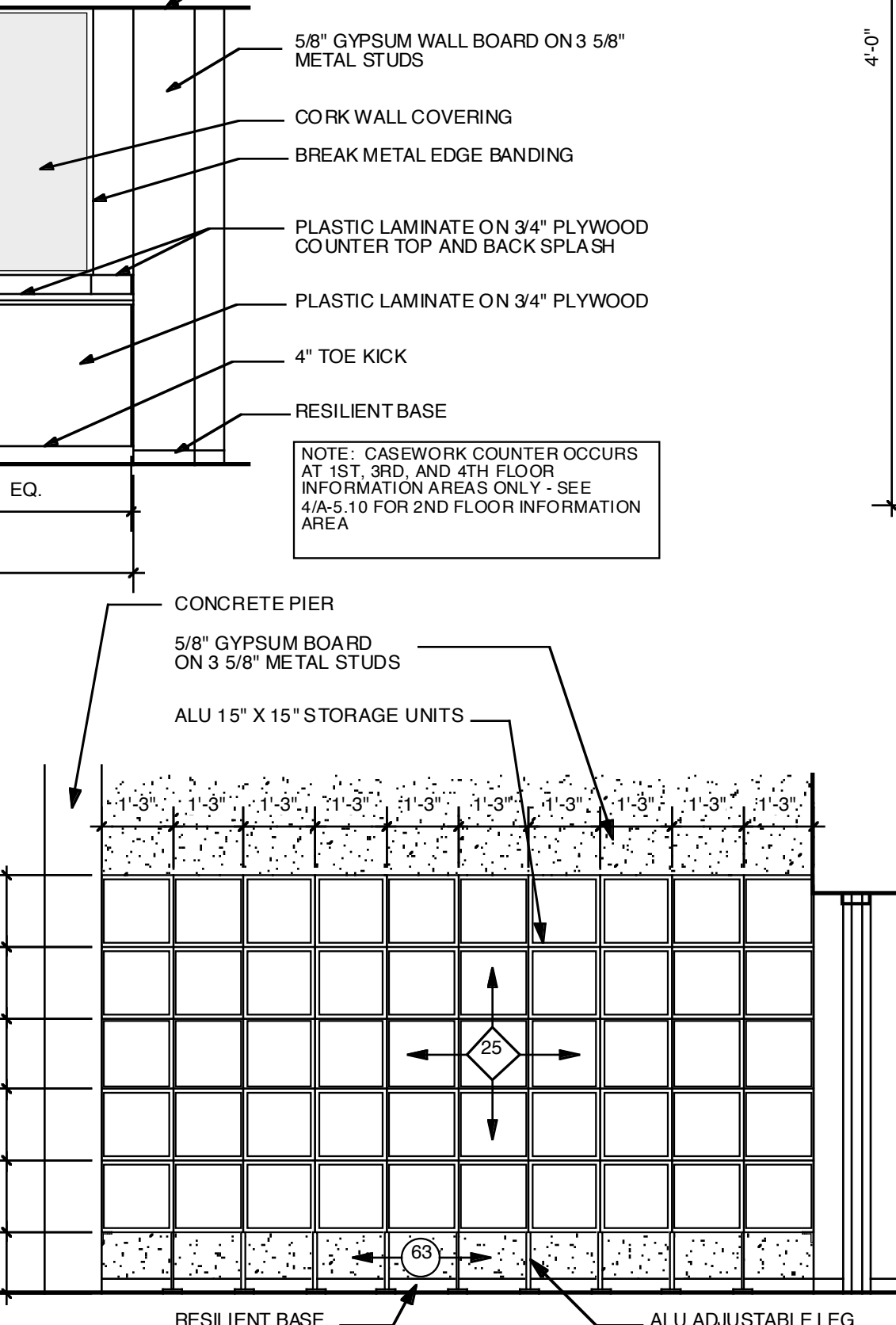
**12 INTERIOR ELEVATION**  
3/8" = 1'-0"



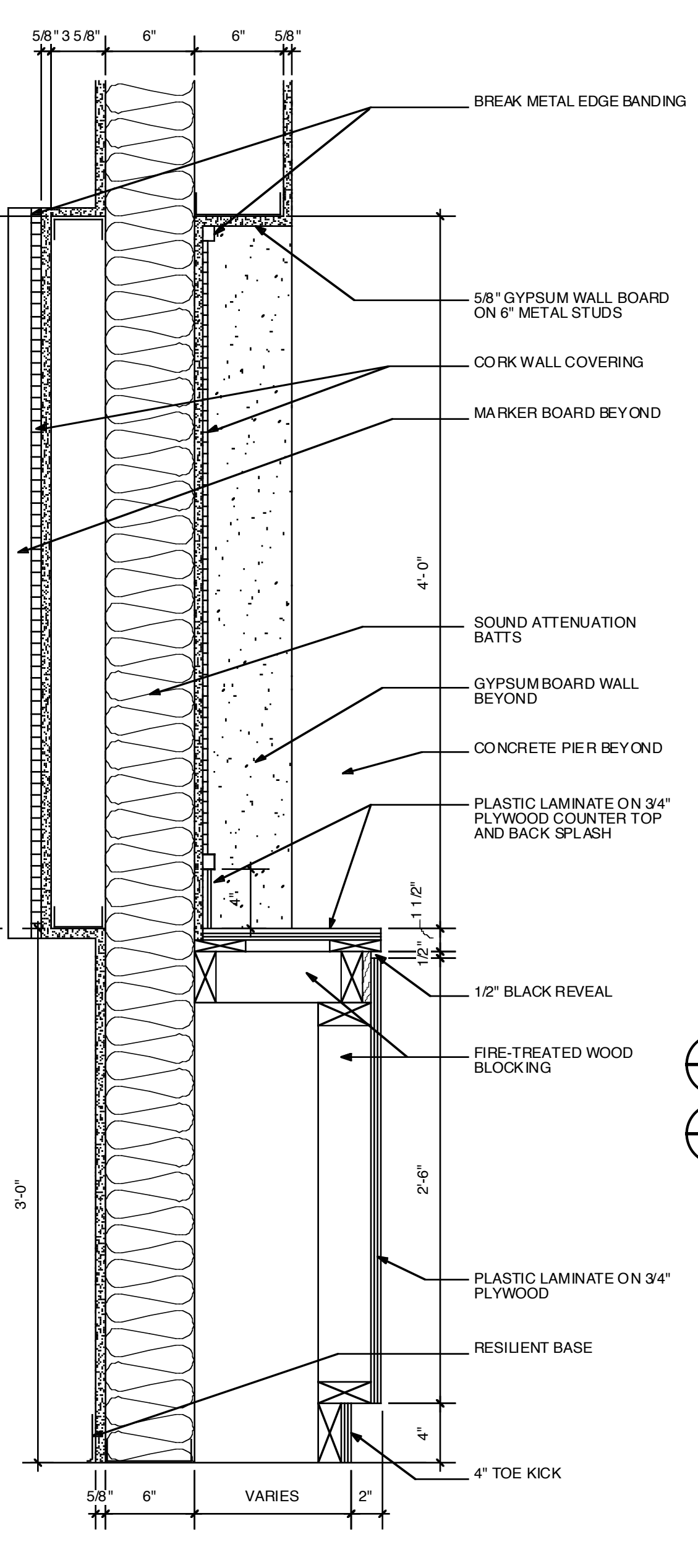
**19 CASEWORK ELEVATION**  
3/8" = 1'-0"



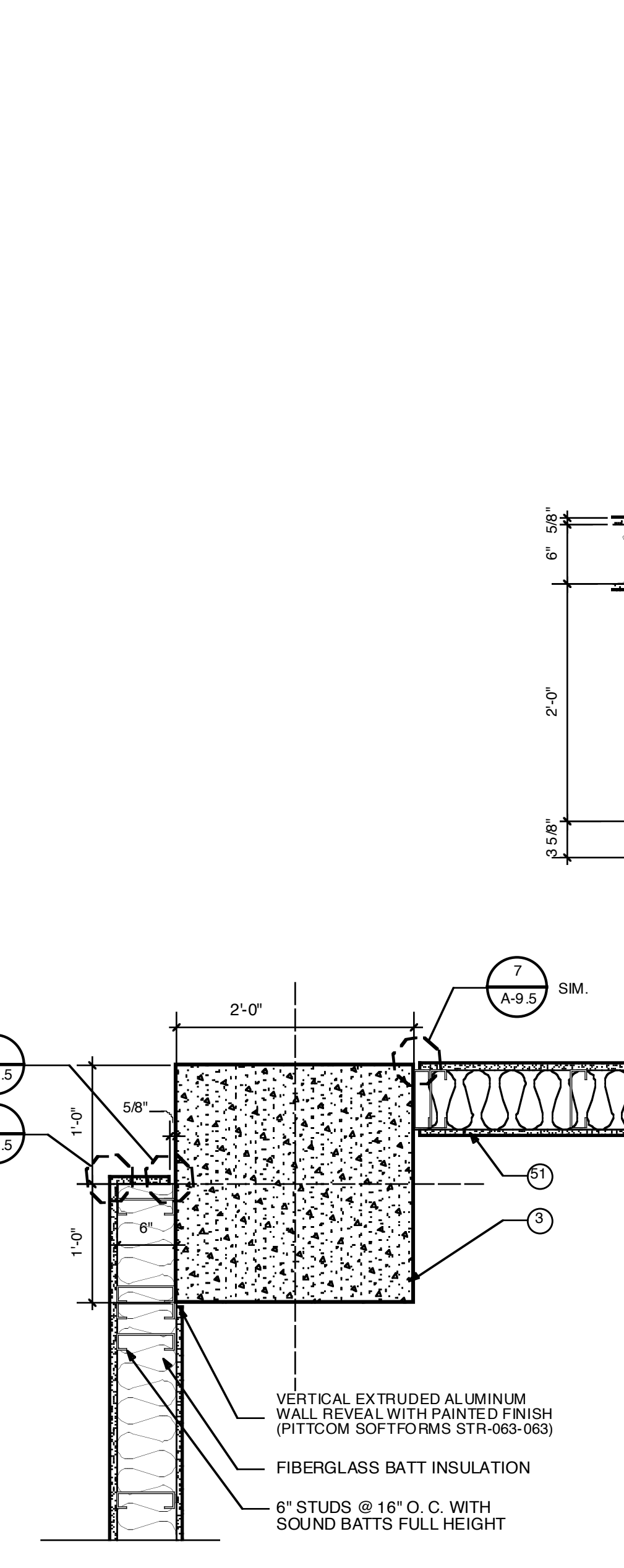
**20 CASEWORK ELEVATION**  
1 1/2" = 1'-0"



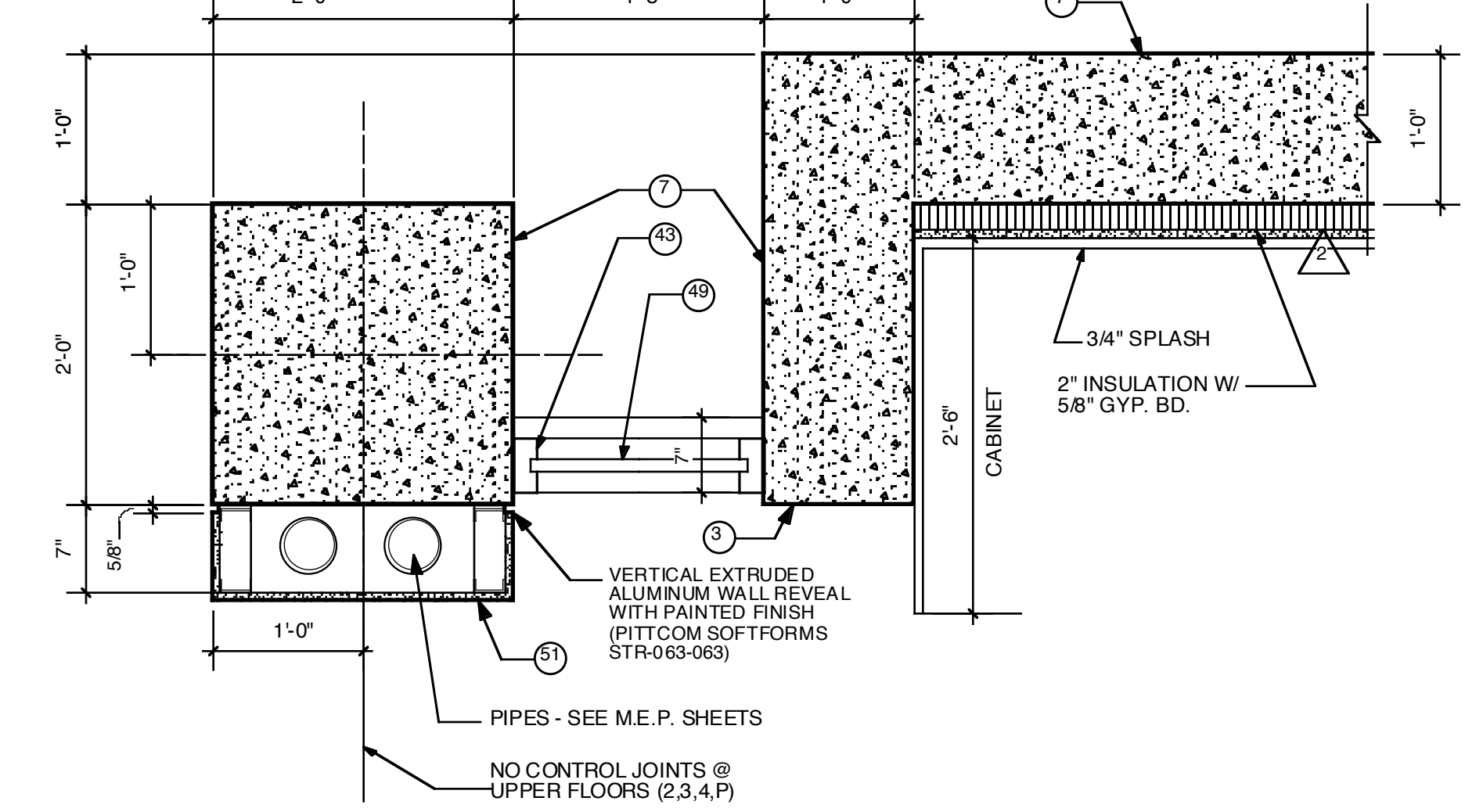
**21 CASEWORK ELEVATIONS**  
3/8" = 1'-0"



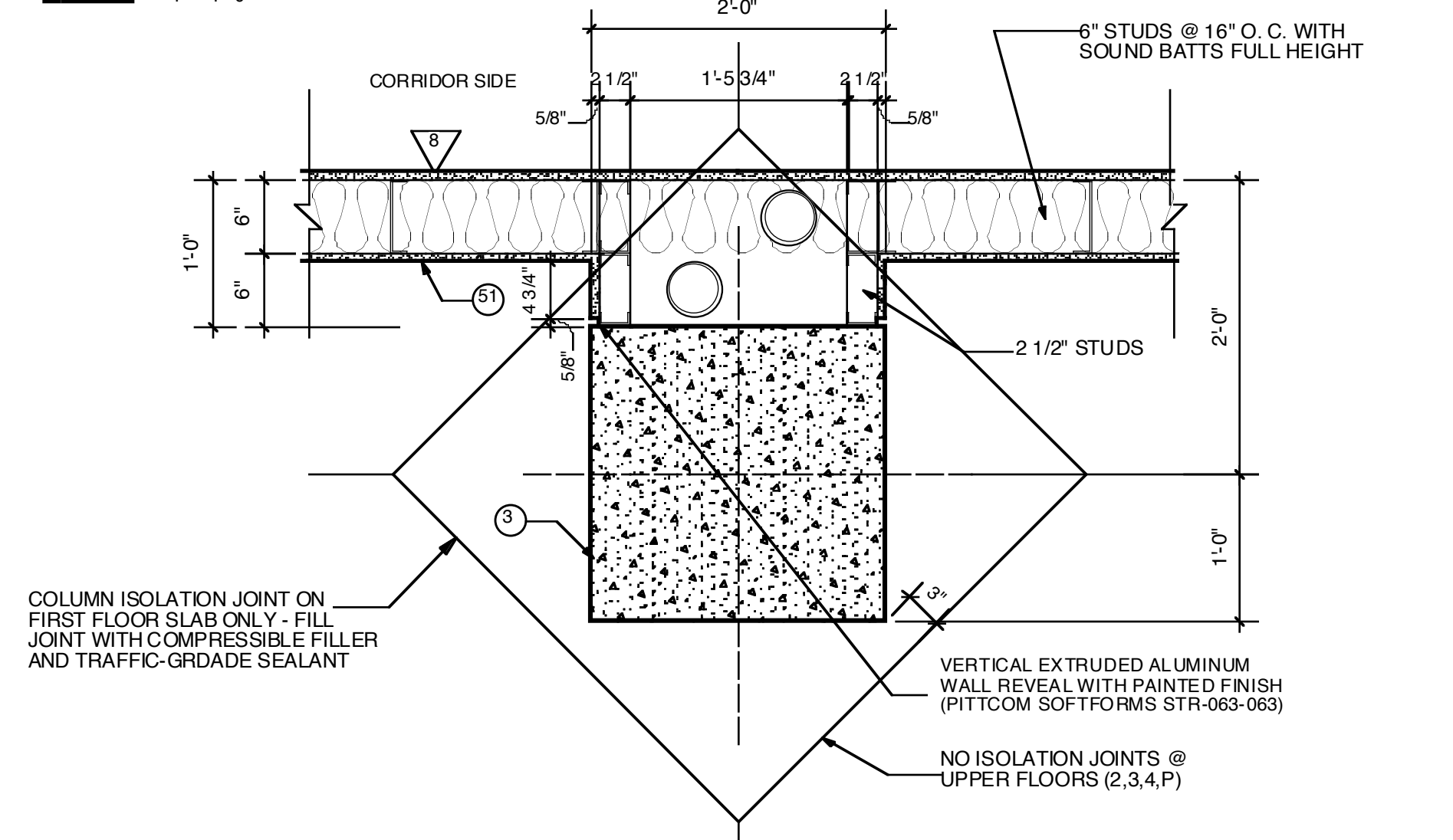
**14 CASEWORK DETAIL**  
1 1/2" = 1'-0"



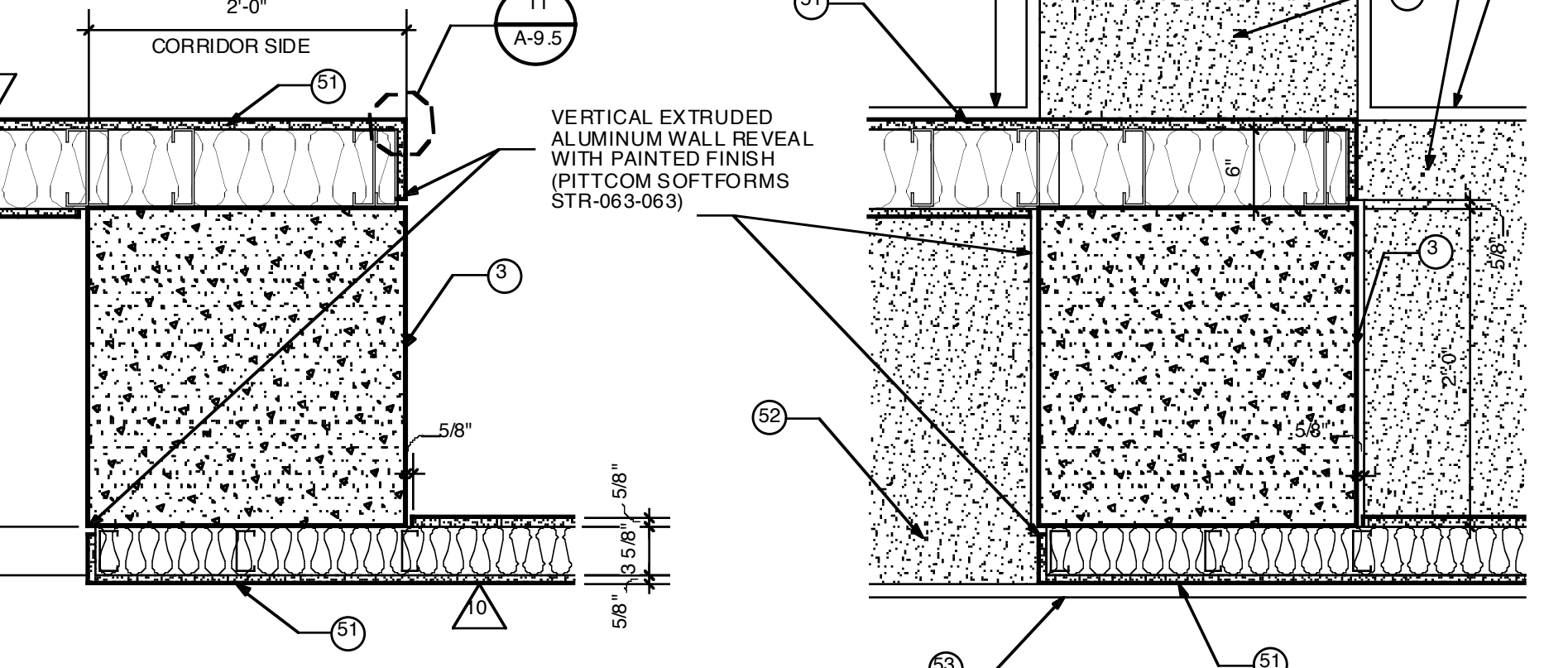
**15 COLUMN DETAIL**  
1" = 1'-0"



**10 COLUMN CHASE**  
1" = 1'-0"



**15 CORRIDOR COLUMN CHASE**  
1" = 1'-0"



**17 COLUMN DETAIL**  
1" = 1'-0" PLAN

**RECORD DOCUMENTS**  
These Record Documents have been prepared based on information provided by others. The Consultant has not verified the accuracy and/or complete nature of this information and shall not be responsible for any errors or omissions that may be incorporated as a result of erroneous information provided by others.

**Omni ARCHITECTS** 12/1/02 DATE

REVISIONS	DATE	NORTHERN KENTUCKY UNIVERSITY NATURAL SCIENCE BUILDING	
1		RECORD DATE	DRAWING NO.
2		DRAWN BY	<b>A-5.10</b>
3		CHECKED BY	COMMONWEALTH OF KENTUCKY FINANCE AND ADMINISTRATION CABINET DEPARTMENT FOR FACILITIES MANAGEMENT FRANKFORT, KENTUCKY
4		DATE	ENGR. FILE NO.
5		AGENCY	<b>Omni Architects</b>
6		AUTHORIZED AGENT	APPROVED FOR PROGRAM CONCEPT ONLY DATE
7		DIVISION OF ENGINEERING	APPROVED FOR PROGRAM CONCEPT ONLY DATE
8			
9			

**MISC. DETAILS**  
**A-5.10**