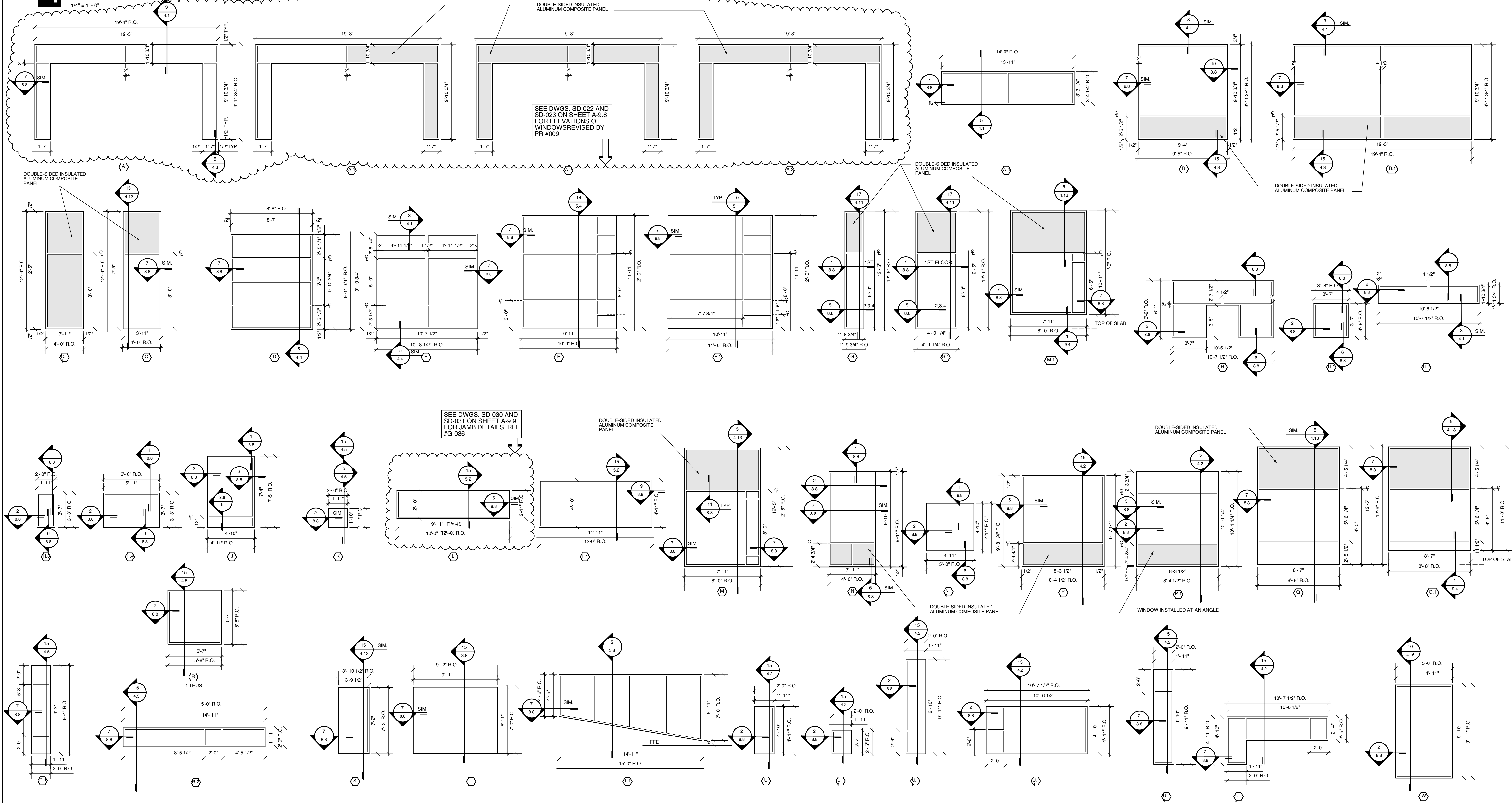


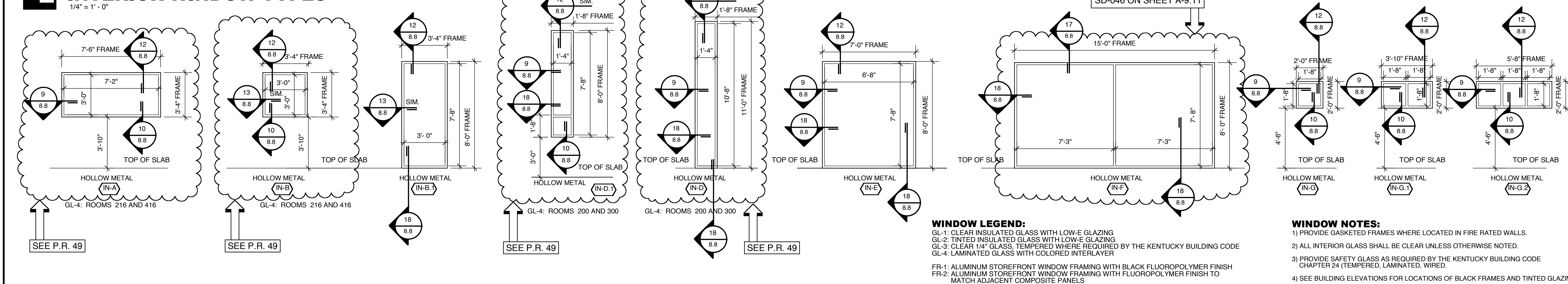
EXTERIOR WINDOW NOTES:

ALL EXTERIOR WINDOWS WILL HAVE A 3/8" EXTRUDED ALUMINUM SILL FLASHING AS PART OF STANDARD WINDOW ASSEMBLY.

1 EXTERIOR WINDOW TYPES



2 INTERIOR WINDOW TYPES



WINDOW LEGEND:
 GL-1: CLEAR INSULATED GLASS WITH LOW-E GLAZING
 GL-2: TINTED INSULATED GLASS WITH LOW-E GLAZING
 GL-3: CLEAR 1/4" GLASS, TEMPERED WHERE REQUIRED BY THE KENTUCKY BUILDING CODE
 GL-4: LAMINATED GLASS WITH COLORED INTER-LAYER
 FR-1: ALUMINUM STOREFRONT WINDOW FRAMING WITH BLACK FLUOROPOLYMER FINISH
 FR-2: ALUMINUM STOREFRONT WINDOW FRAMING WITH FLUOROPOLYMER FINISH TO MATCH ADJACENT COMPOSITE PANELS

WINDOW NOTES:
 1) PROVIDE GASKETED FRAMES WHERE LOCATED IN FIRE RATED WALLS.
 2) ALL INTERIOR GLASS SHALL BE CLEAR UNLESS OTHERWISE NOTED.
 3) PROVIDE SAFETY GLASS AS REQUIRED BY THE KENTUCKY BUILDING CODE CHAPTER 24 (TEMPERED, LAMINATED, WIRED).
 4) SEE BUILDING ELEVATIONS FOR LOCATIONS OF BLACK FRAMES AND TINTED GLAZING.

RECORD DOCUMENTS
 These Record Documents have been prepared based on information provided by others. The Consultant has not verified the accuracy and/or completeness of this information and shall not be responsible for any errors or omissions that may be incorporated as a result of erroneous information provided by others.

Omni ARCHITECTS 12/10/02 DATE

EXTERIOR, INTERIOR WINDOW TYPES

A-8.4

NORTHERN KENTUCKY UNIVERSITY
NATURAL SCIENCE BUILDING

DRAWING NO. **A-8.4**

REVIEWED DIV. OF ENGR.

ENG. FILE NO. **I-111**

DATE **6/99**

AGENCY AUTHORIZED AGENT DATE

DIVISION OF ENGINEERING APPROVED FOR PROGRAM CONCEPT ONLY DATE

APPROVED FOR PROGRAM CONCEPT ONLY DATE