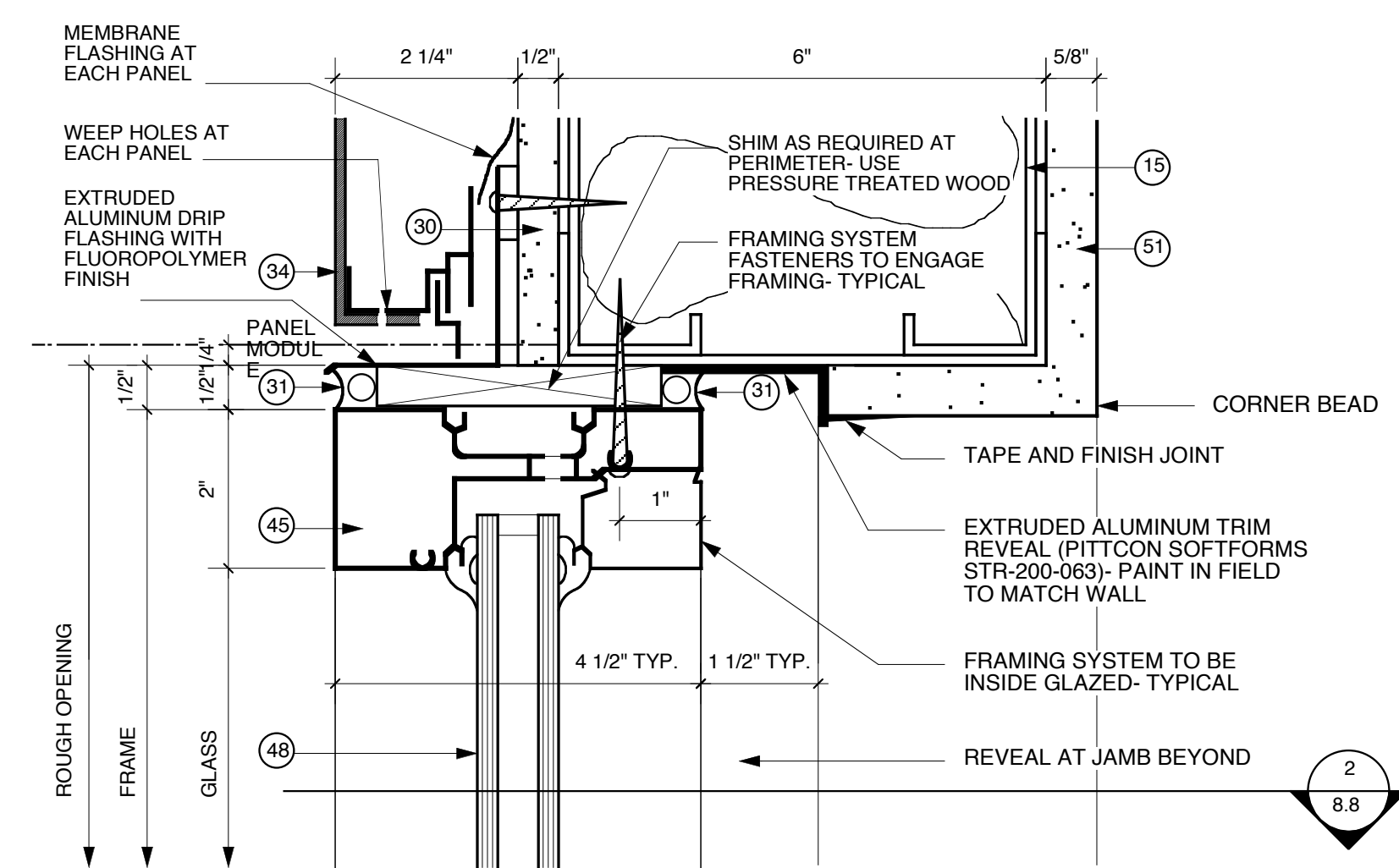
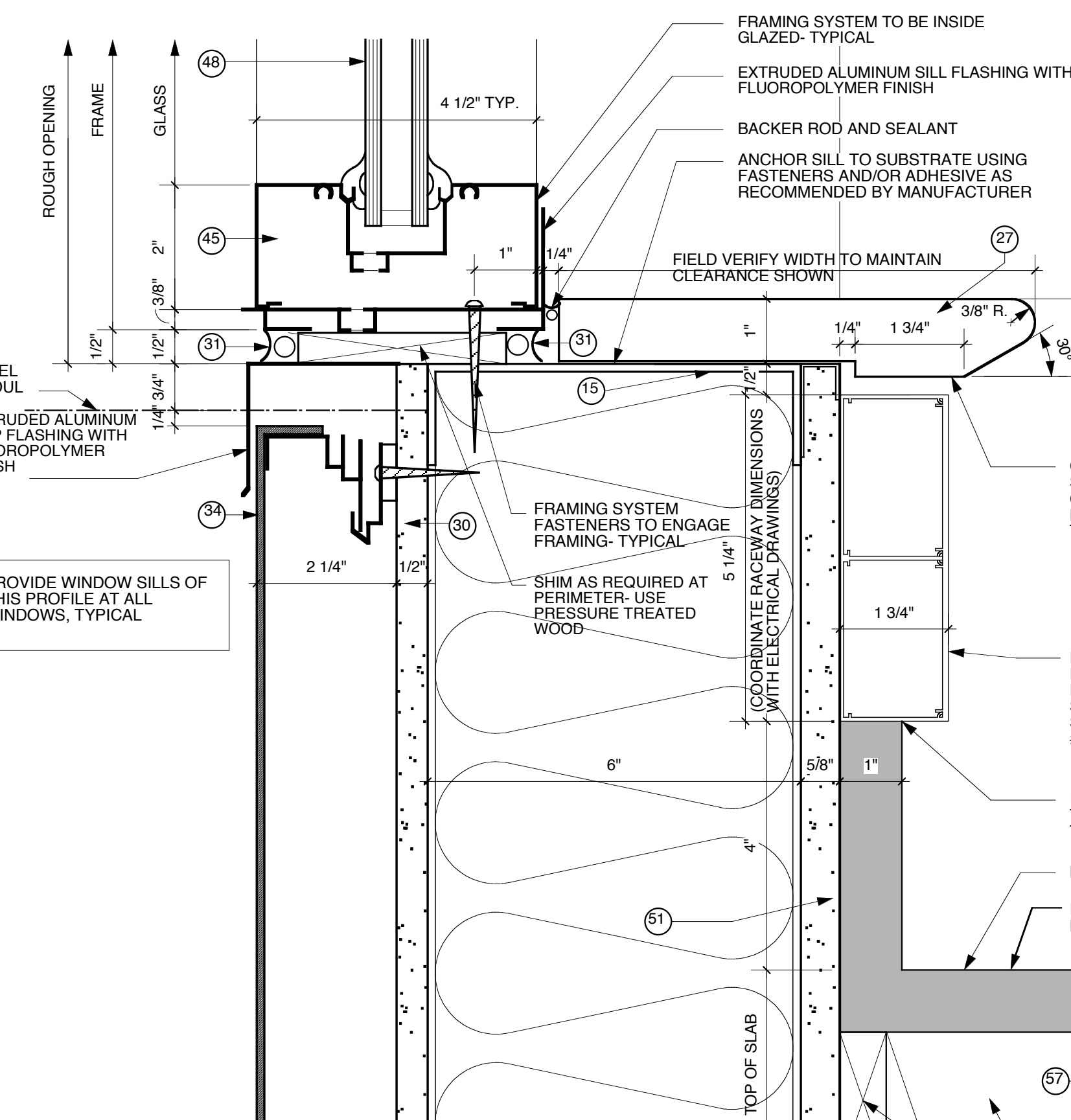


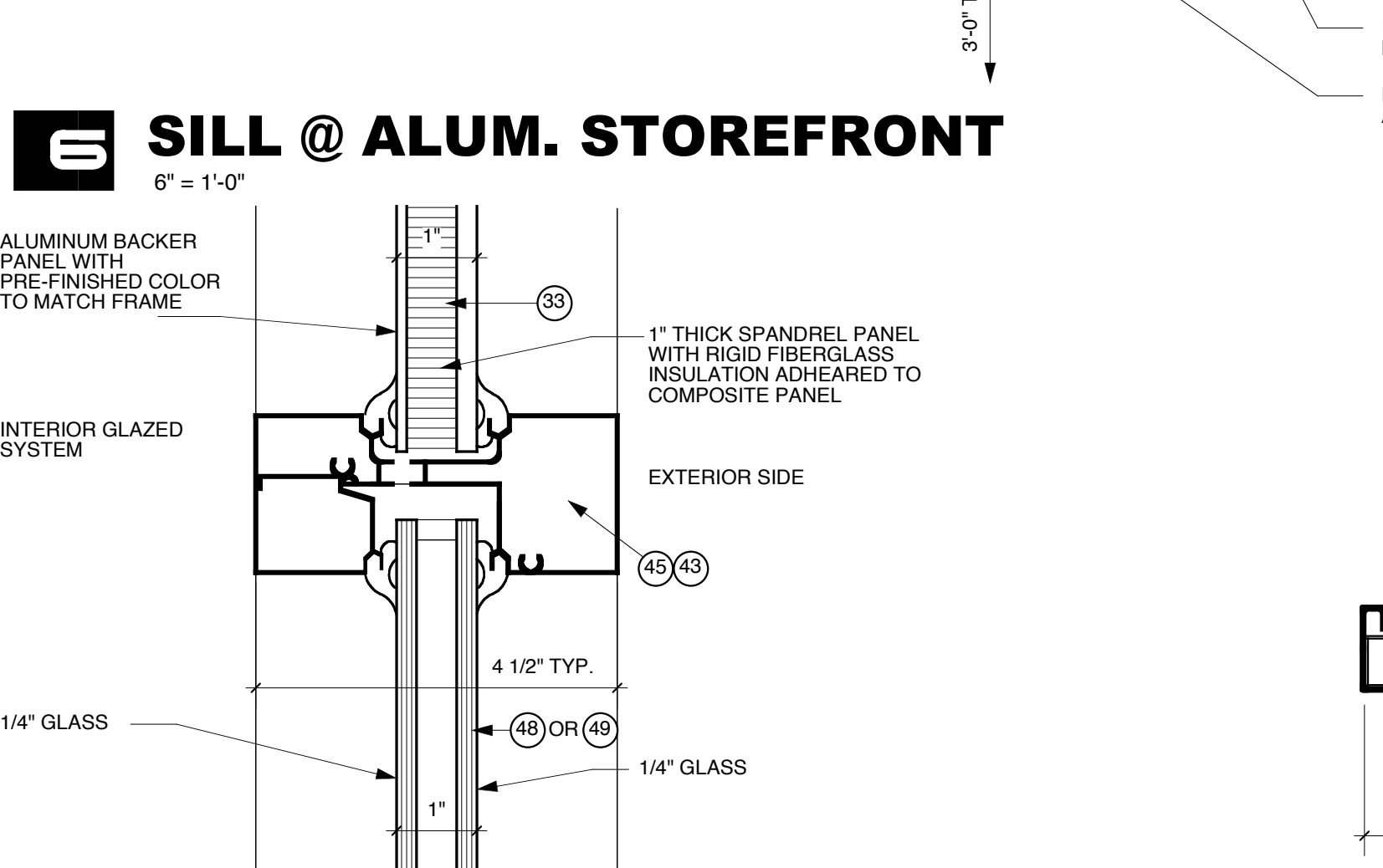
- 1 STRUCTURAL CONCRETE FOUNDATION - SEE STRUCTURAL DRAWINGS FOR DIMENSIONS, BEARING POINTS AND REINFORCING
- 2 STRUCTURAL CONCRETE SLAB - SEE STRUCTURAL DRAWINGS FOR DIMENSIONS, BEARING POINTS AND ENGINEERED FILL
- 3 EXPOSED CAST-IN-PLACE CONCRETE SURFACE - DO NOT PAINT
- 4 EXPOSED CAST-IN-PLACE CONCRETE SURFACE BEYOND
- 5 EXPOSED CAST-IN-PLACE CONCRETE WEARING SLAB OVER RIGID INSULATION OVER MEMBRANE FLASHING OVER STRUCTURAL CONCRETE SLAB
- 6 LIGHTWEIGHT CONCRETE TOPPING OVER STRUCTURAL CONCRETE SLAB - SLOPE AT 1/4" PER FOOT TO DRAIN AS SHOWN ON ROOF PLAN
- 7 EXPOSED CAST-IN-PLACE CONCRETE WITH ARCHITECTURAL FINISH AND REINFORCING JOINTS
- 8 CONCRETE REVEAL FOR SURFACE-MOUNTED LIGHT FIXTURE
- 9 CONCRETE MASONRY UNITS WITH HORIZONTAL JOINT REINFORCING AT 16" ON CENTER VERTICALLY - SEE FINISH SCHEDULE FOR FINISH
- 10 EXPOSED STEEL STRUCTURE WITH PAINTED FINISH - SEE STRUCTURAL DRAWINGS FOR SIZE AND DIMENSIONS
- 11 STEEL STRUCTURE - SEE STRUCTURAL DRAWINGS FOR SIZE AND DIMENSIONS
- 12 EXPOSED STEEL STRUCTURE WITH PAINTED FINISH - SEE STRUCTURAL DRAWINGS FOR SIZE AND DIMENSIONS
- 13 METAL ROOF DECK - SEE STRUCTURAL DRAWINGS FOR DEPTH AND GAUGE
- 14 STEEL EDGE ANGLE - SEE STRUCTURAL DRAWINGS FOR SIZE AND DIMENSIONS
- 15 1/2" GAUGE COLD-FORMED METAL STUDS AT 16" ON CENTER
- 16 1/2" GAUGE COLD-FORMED METAL FRAMING AT 16" ON CENTER
- 17 SECURE EACH COLD-FORMED FRAMING MEMBER TO STEEL STRUCTURE WITH 1/2" JOINT OR DEFLECTION SLOPED CONCRETE SURFACE
- 18 PROVIDE DOUBLE STUDS AT THIS LOCATION, TYPICAL
- 19 METAL STUDS AT 16" ON CENTER
- 20 METAL FRAMING AT 16" ON CENTER
- 21 EXTERIOR ALUMINUM GUARDRAIL WITH BLACK FLUOROPOLYMER FINISH - 42" HIGH
- 22 METAL HANGRAIL / GUARDRAIL WITH PAINTED FINISH
- 23 HOLLOW METAL DOOR AND FRAME WITH PAINTED FINISH
- 24 FIRE-TREATED WOOD BLOCKING
- 25 SHIM AS REQUIRED AT PERIMETER
- 26 SOLID SURFACING WINDOW SILL
- 27 APPROXIMATE FINISH GRADE - SEE SITE DRAWINGS FOR ELEVATION
- 28 AIR INFILTRATION BARRIER WITH TAPED JOINTS OVER 1/2" GLASSMATT-FACED EXTERIOR GYP BOARD OR INSULATION ON INTERIOR FACE OF WALL AND 6 MIL VAPOR BARRIER ON INTERIOR FACE OF WALL - FILL CAVITY WITH BATT INSULATION
- 29 BACKER ROD AND SEALANT
- 30 BACKER ROD AND SEALANT IN COMPOSITE ALUMINUM PANEL JOINTS IN THIS LOCATION, TYPICAL
- 31 COMPOSITE ALUMINUM SPANDREL PANEL WITH FINISH TO MATCH SURROUNDING FRAME
- 32 COMPOSITE ALUMINUM PANEL SYSTEM WITH FLUOROPOLYMER FINISH SELECTED BY ARCHITECT WITH CONCEALED FASTENERS, ALUMINUM MOUNTING TRACKS, AND SHIMS AS REQUIRED - EACH PANEL TO HAVE GASKET OR GASKET JOINTS BETWEEN PANELS
- 33 COMPOSITE ALUMINUM PANEL SYSTEM BEYOND
- 34 COMPOSITE ALUMINUM PANEL COPING WITH FLUOROPOLYMER FINISH TO MATCH ALUMINUM COMPOSITE PANEL COLOR
- 35 EXTRUDED ALUMINUM COPING WITH FLUOROPOLYMER FINISH TO MATCH ALUMINUM COMPOSITE PANEL COLOR
- 36 EXTRUDED ALUMINUM FASCIA/ROOF EDGE WITH FLUOROPOLYMER FINISH TO MATCH ALUMINUM COMPOSITE PANEL COLOR
- 37 HOT-ASPHALT-APPLIED MULTILAYER SBS MODIFIED BITUMEN ROOFING SYSTEM OVER POLYETHYLENE INSULATION BOARD - INSTALLATION TO BE APPROVED BY ROOFING MANUFACTURER - PROVIDE PROTECTION BOARD WHERE REQUIRED BY ROOFING MANUFACTURER
- 38 SLOPE RIGID INSULATION BOARD AT 1/4" PER FOOT TO DRAIN AS SHOWN ON ROOF PLAN - R-20 AVERAGE
- 39 UNIFORM THICKNESS RIGID INSULATION BOARD - R-20 MINIMUM
- 40 1/2" GLASSMATT-FACED GYPSUM THERMAL BARRIER BOARD
- 41 THERMALLY-BROKEN ALUMINUM STOREFRONT FRAMING SYSTEM WITH BLACK FLUOROPOLYMER FINISH
- 42 TRANSLUCENT COMPOSITE FIBERGLASS PANELS WITH ALUMINUM FRAME WITH FLUOROPOLYMER FINISH TO MATCH ALUMINUM COMPOSITE PANEL COLOR
- 43 THERMALLY-BROKEN ALUMINUM STOREFRONT FRAMING SYSTEM WITH FLUOROPOLYMER FINISH TO MATCH ALUMINUM COMPOSITE PANEL COLOR
- 44 THERMALLY-BROKEN ALUMINUM CURTAINWALL FRAMING SYSTEM WITH FLUOROPOLYMER FINISH TO MATCH ALUMINUM COMPOSITE PANEL COLOR
- 45 THERMALLY-BROKEN ALUMINUM SKYLIGHT WITH FLUOROPOLYMER FINISH
- 46 1" INSULATING CLEAR GLAZING WITH LOW-EMISSIVITY COATING
- 47 1" INSULATING GREY TINTED GLAZING WITH LOW-EMISSIVITY COATING
- 48 5/8" GYPSUM BOARD OVER VAPOR BARRIER OVER RIGID INSULATION OVER 2" METAL FURRING
- 49 5/8" GYPSUM BOARD - SEE FINISH SCHEDULE FOR FINISHES AND WALL TYPE SCHEDULE FOR RATED MATERIALS
- 50 5/8" GYPSUM BOARD BEYOND
- 51 SUSPENDED ACOUSTIC CEILING SYSTEM WITH 2'x2' PANELS - SEE FINISH SCHEDULE FOR PANEL TYPE
- 52 3/16" TAPERED RESILIENT BASE - SEE SCHEDULE FOR TYPE
- 53 WALL BASE - SEE SCHEDULE FOR TYPE
- 54 STEEL ACOUSTIC LOUVER WITH FLUOROPOLYMER FINISH TO MATCH ALUMINUM COMPOSITE PANEL COLOR
- 55 LABORATORY CASEWORK - SEE ENLARGED PLANS AND ELEVATIONS FOR CONSTRUCTION AND DIMENSIONS
- 56 LIGHTWEIGHT CONCRETE TOPPING OVER STRUCTURAL METAL DECK SLOPE AT 1/4" PER FOOT TO DRAIN AS SHOWN ON ROOF PLAN
- 57 EXPOSED CONCRETE FLOOR SLAB WITH TROWEL FINISH AND CLEAR HARDENER / SEALER
- 58 1/2" HIGH SURFACE MOUNTED CAST ALUMINUM LETTERS - NUMBERS
- 59 COMPOSITE DRAINAGE / PROTECTION BOARD WITH INTEGRAL FILTER FABRIC OVER RUBBER AND ASPHALT WATERPROOFING MEMBRANE - PROVIDE FOUNDATION DRAINS AS SHOWN
- 60 1" DEEP REVEAL IN CONCRETE SURFACE
- 61 5/8" GYPSUM BOARD OVER METAL FRAMING AT 16" ON CENTER
- 62 STRUCTURAL CONCRETE FRAME AND SLAB - SEE STRUCTURAL DRAWINGS FOR DIMENSIONS AND REINFORCING
- 63 EXPOSED STEEL STAIR SYSTEM WITH PAINTED FINISH - FILL STEEL TREAD PANS WITH CONCRETE AND PROVIDE 1/2" DIAMETER PIPE HANDRAILS AND GUARDRAILS AT 42" ABOVE FLOOR
- 64 FLOOR FINISH - SEE ROOM FINISH SCHEDULE FOR TYPE



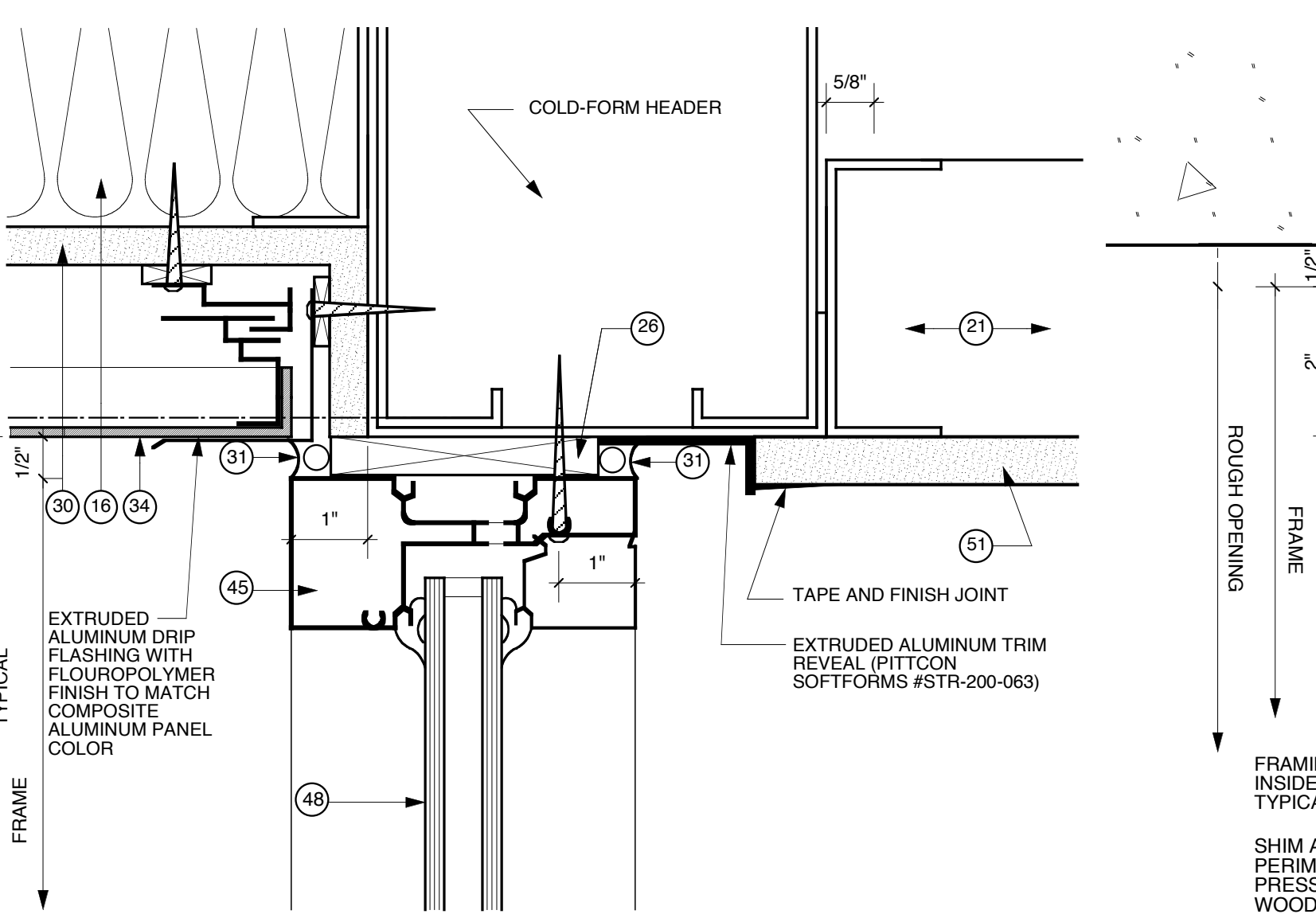
**1 HEAD @ ALUM. STOREFRONT**  
6" = 1'-0"



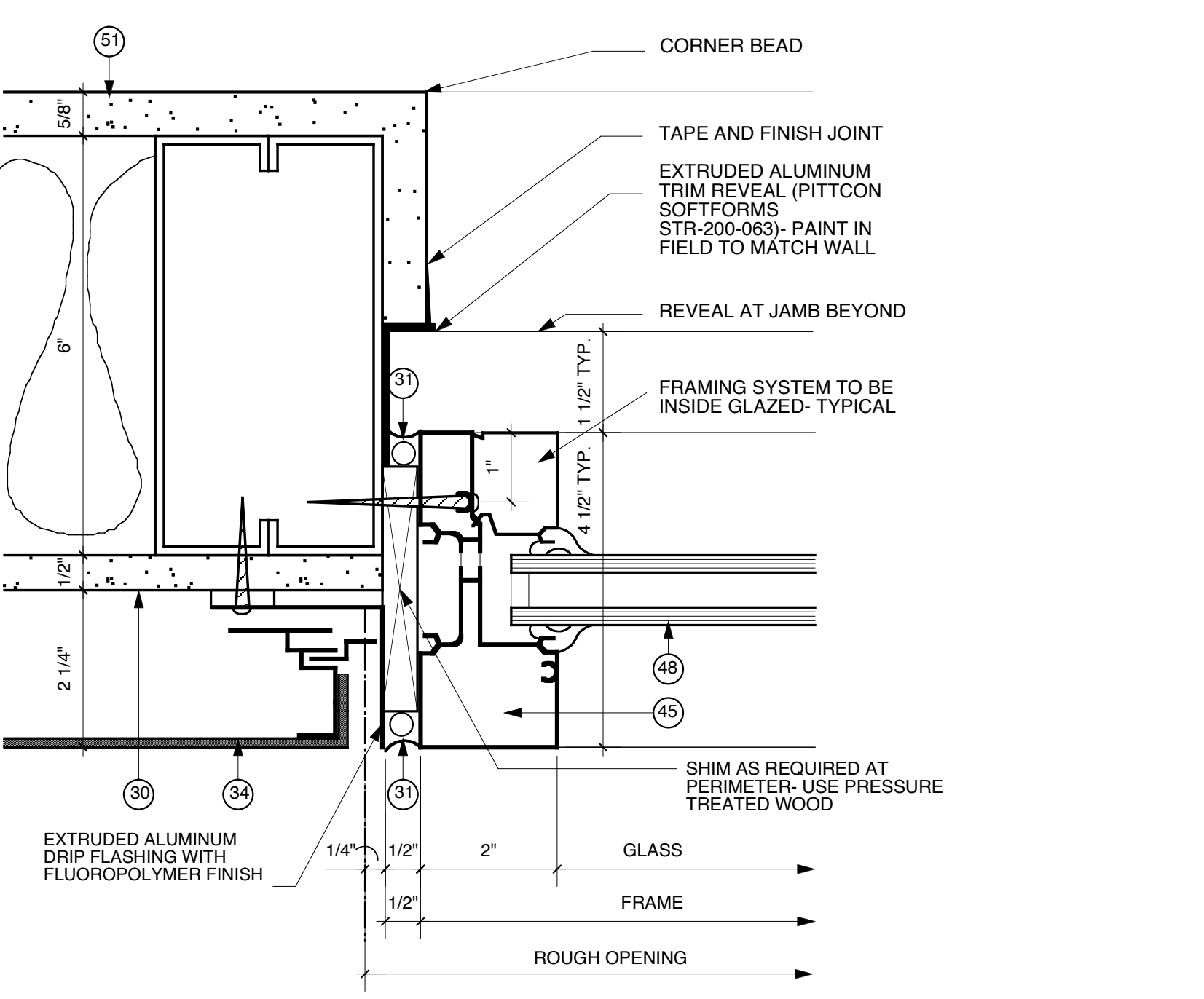
**2 JAMB @ ALUM. STOREFRONT**  
6" = 1'-0"



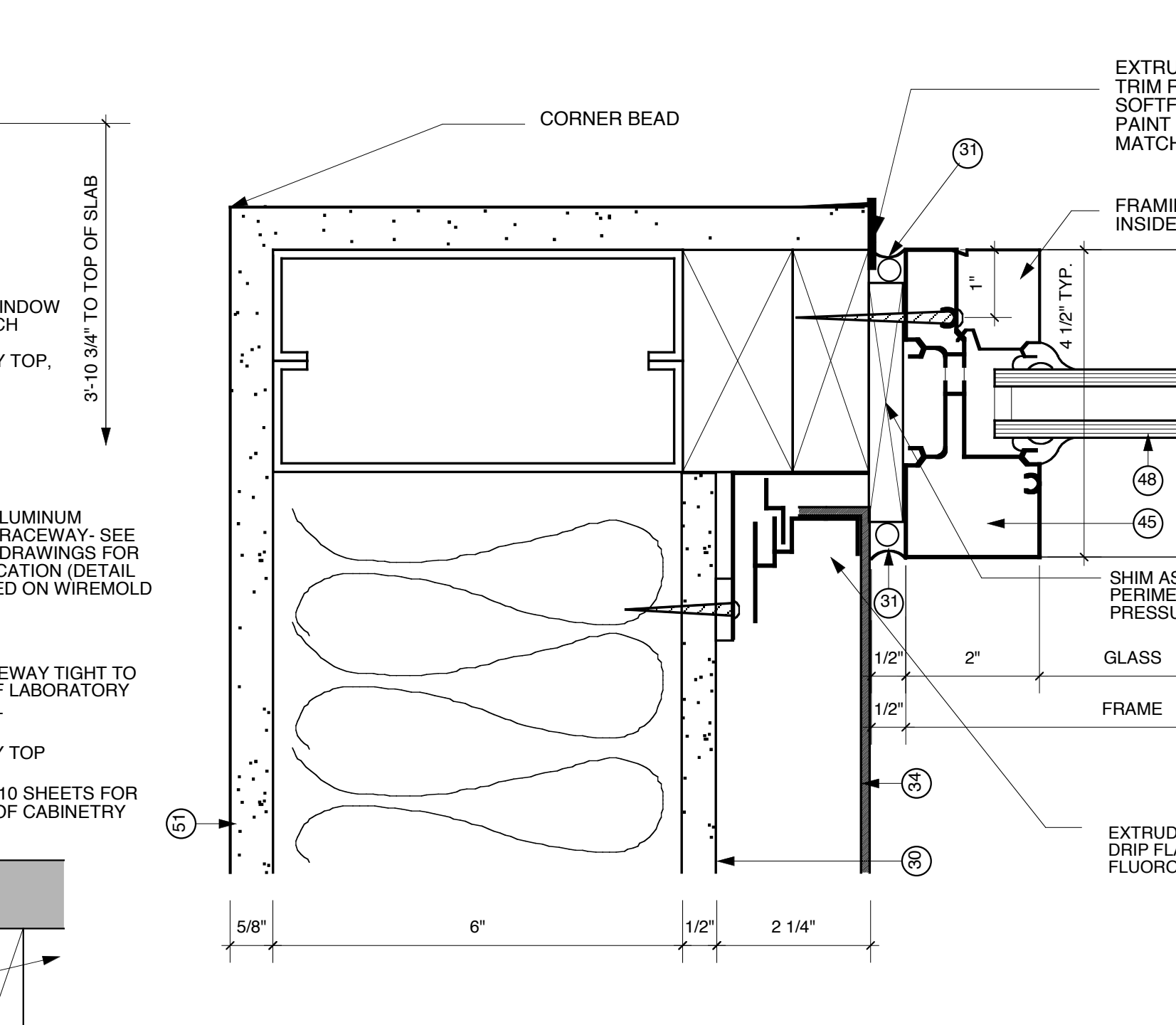
**3 SILL @ ALUM. STOREFRONT**  
6" = 1'-0"



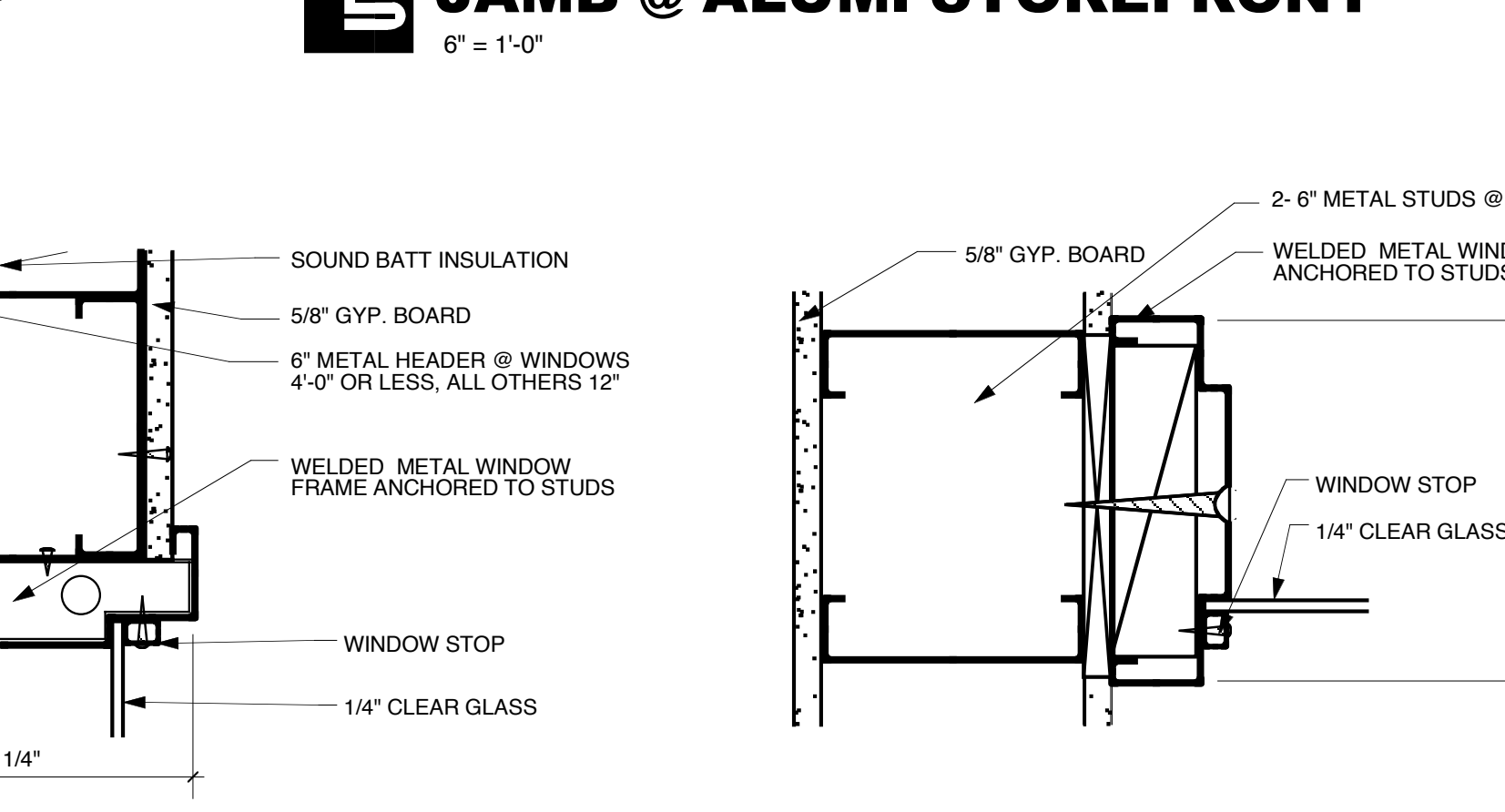
**4 INTERMEDIATE MULLION**  
6" = 1'-0"



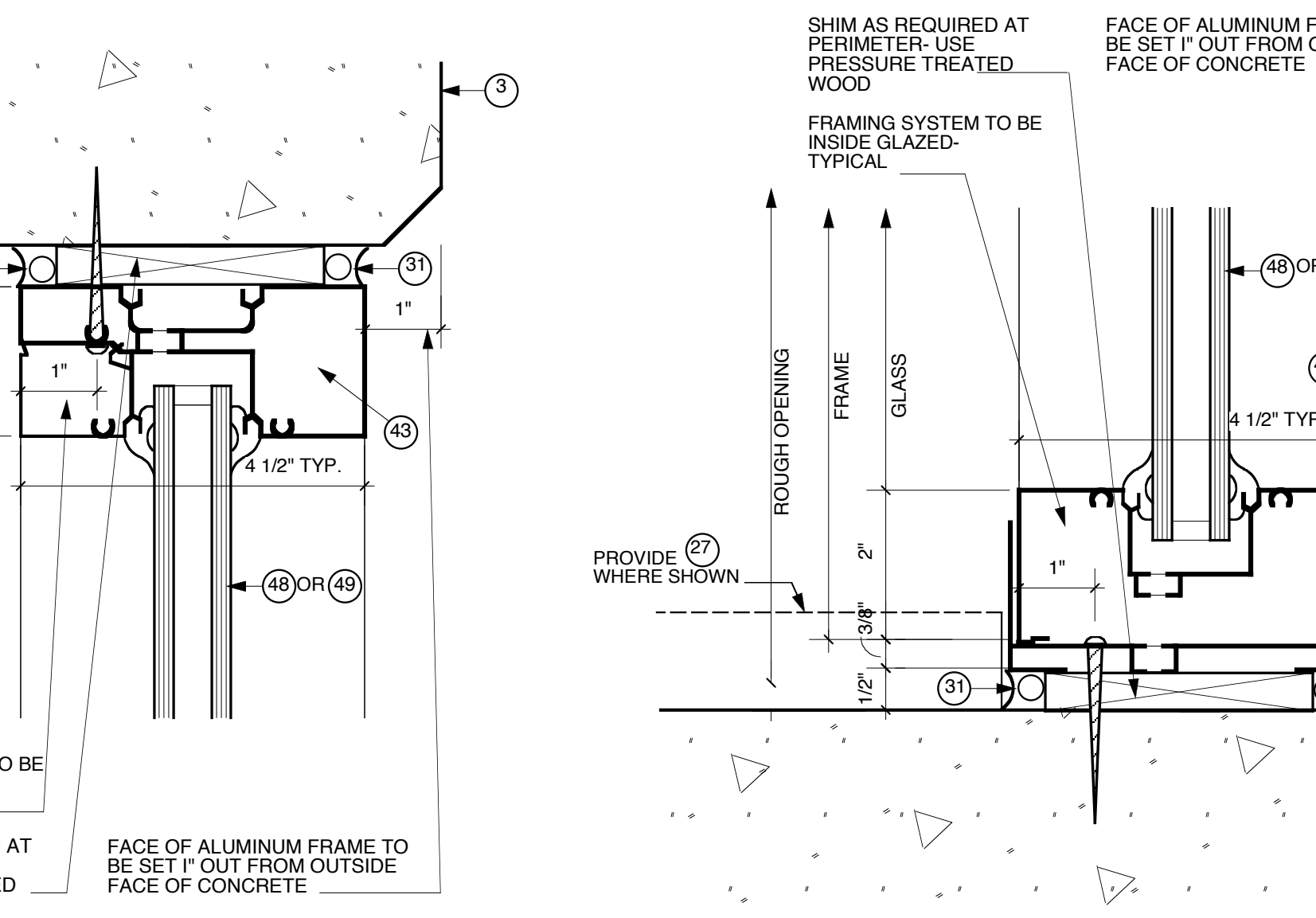
**5 JAMB @ ALUM. STOREFRONT**  
6" = 1'-0"



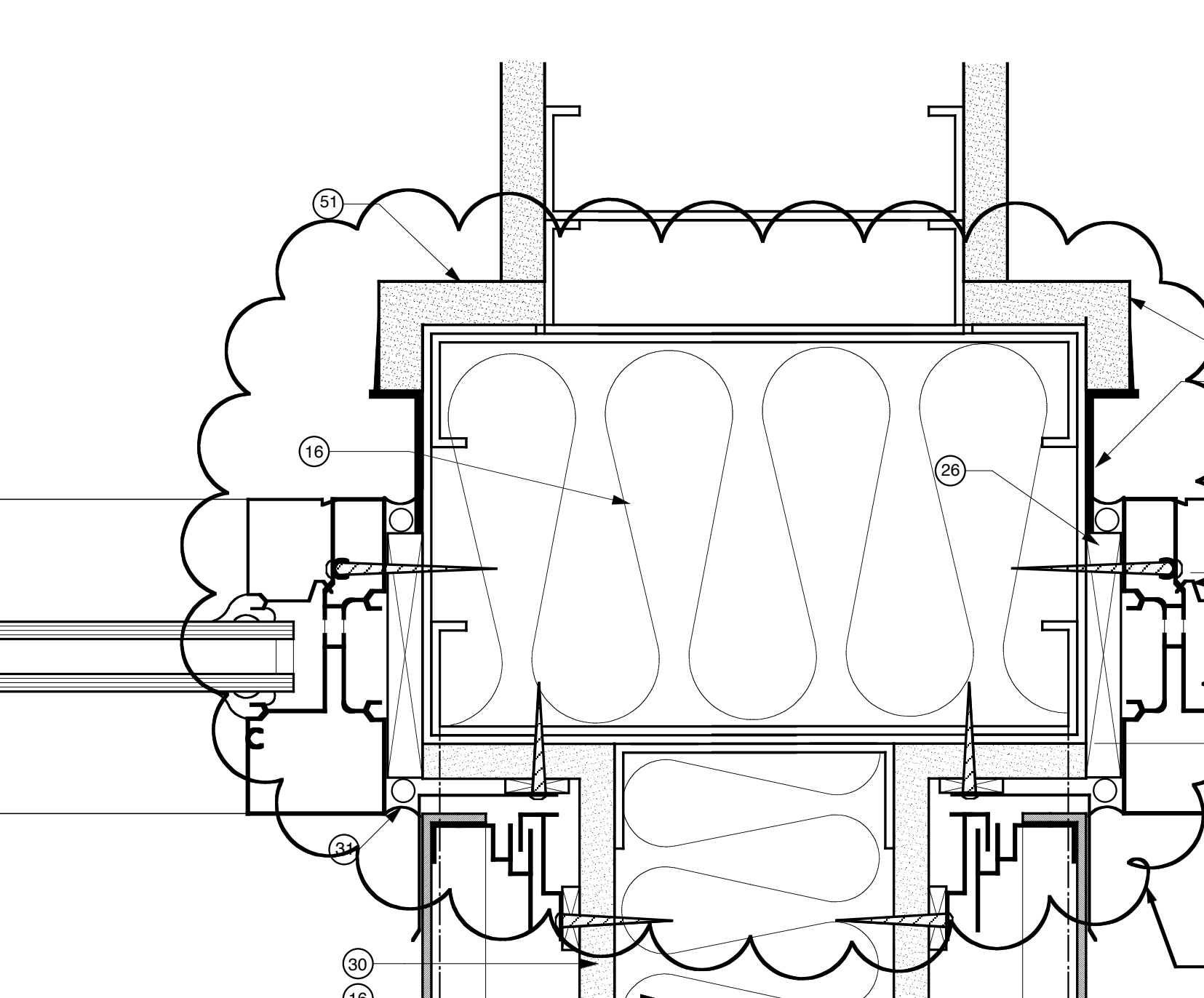
**6 JAMB @ ALUM. STOREFRONT**  
6" = 1'-0"



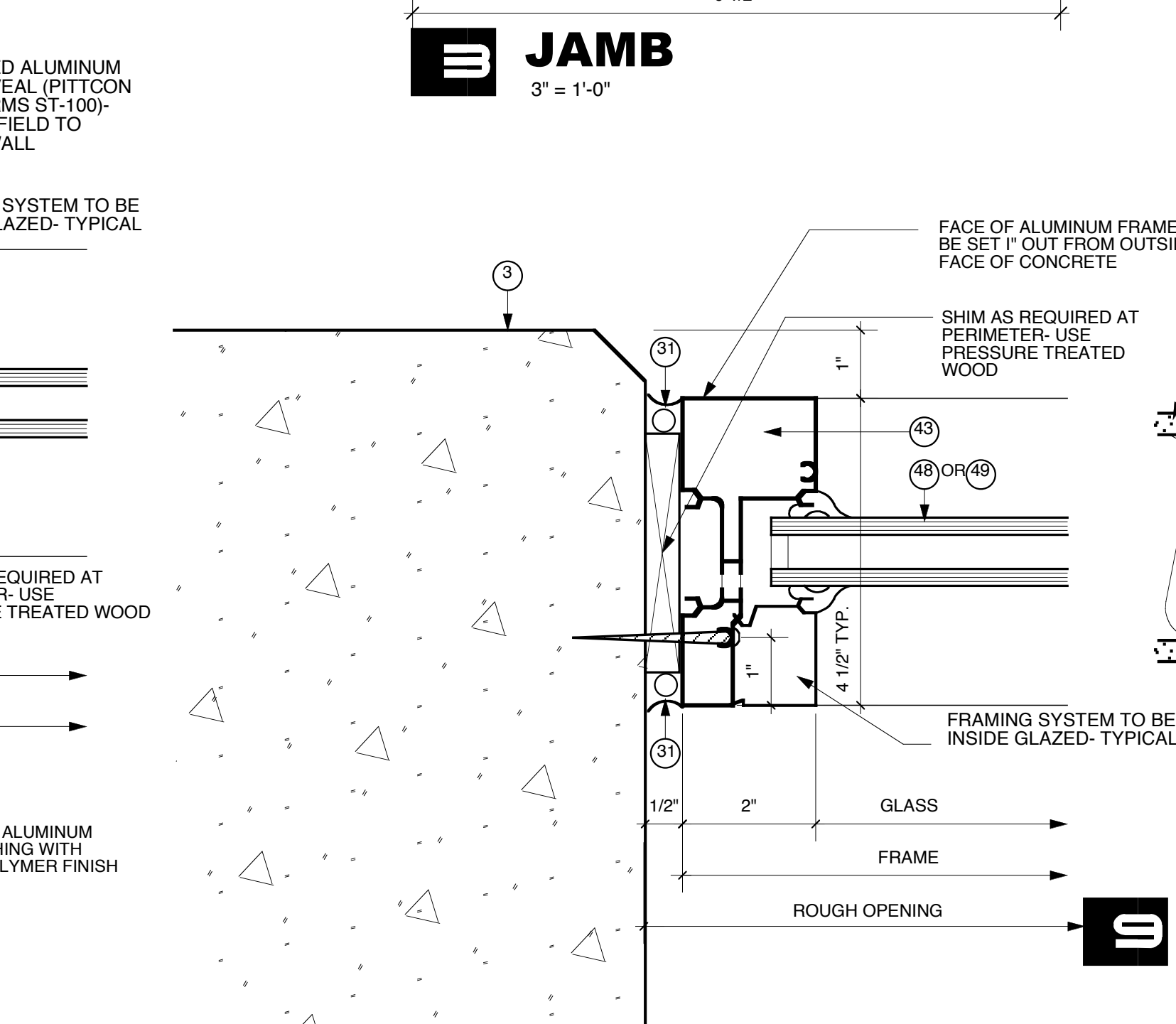
**7 JAMB @ ALUM. STOREFRONT**  
6" = 1'-0"



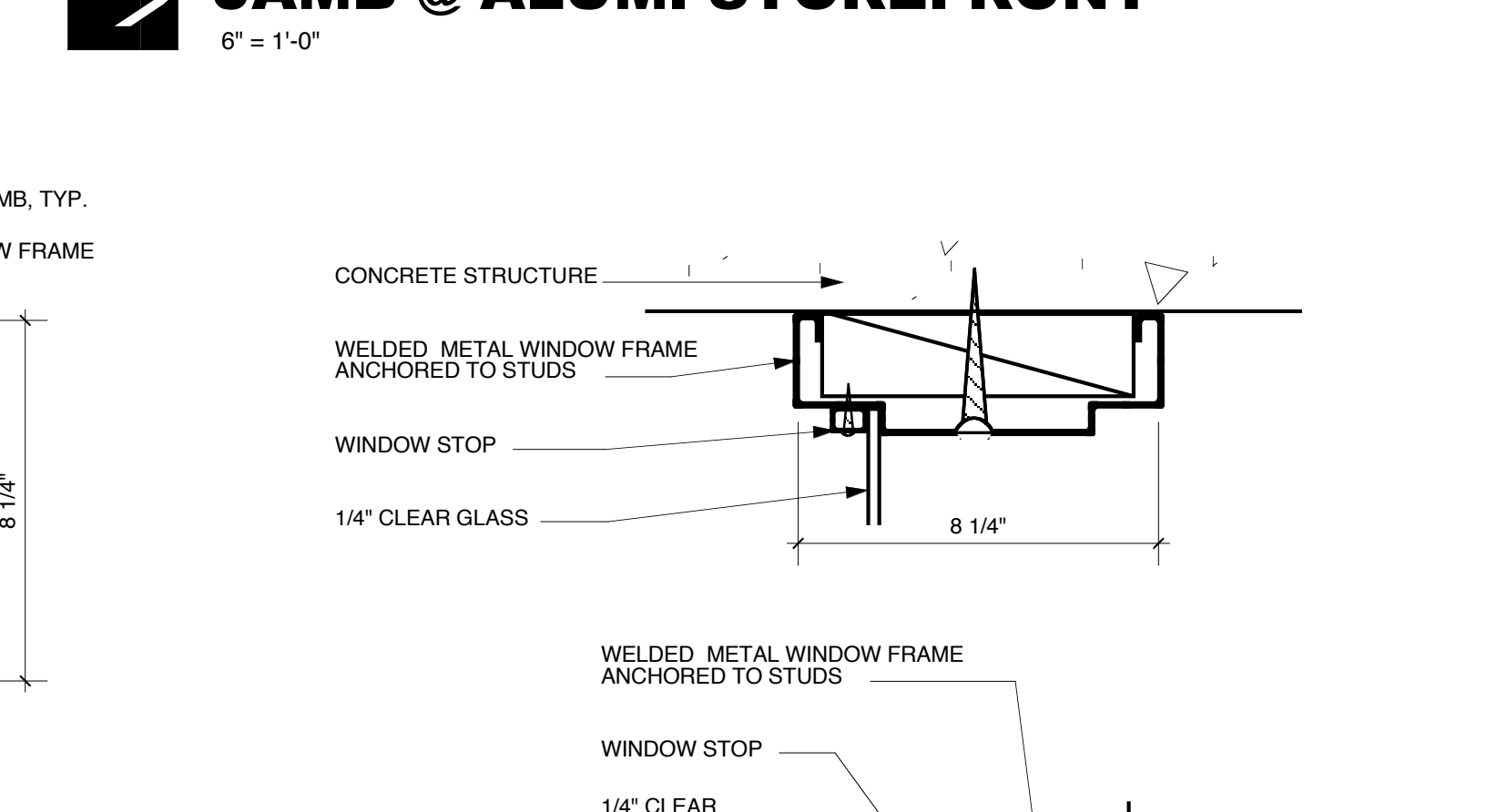
**8 JAMB @ ALUM. STOREFRONT**  
6" = 1'-0"



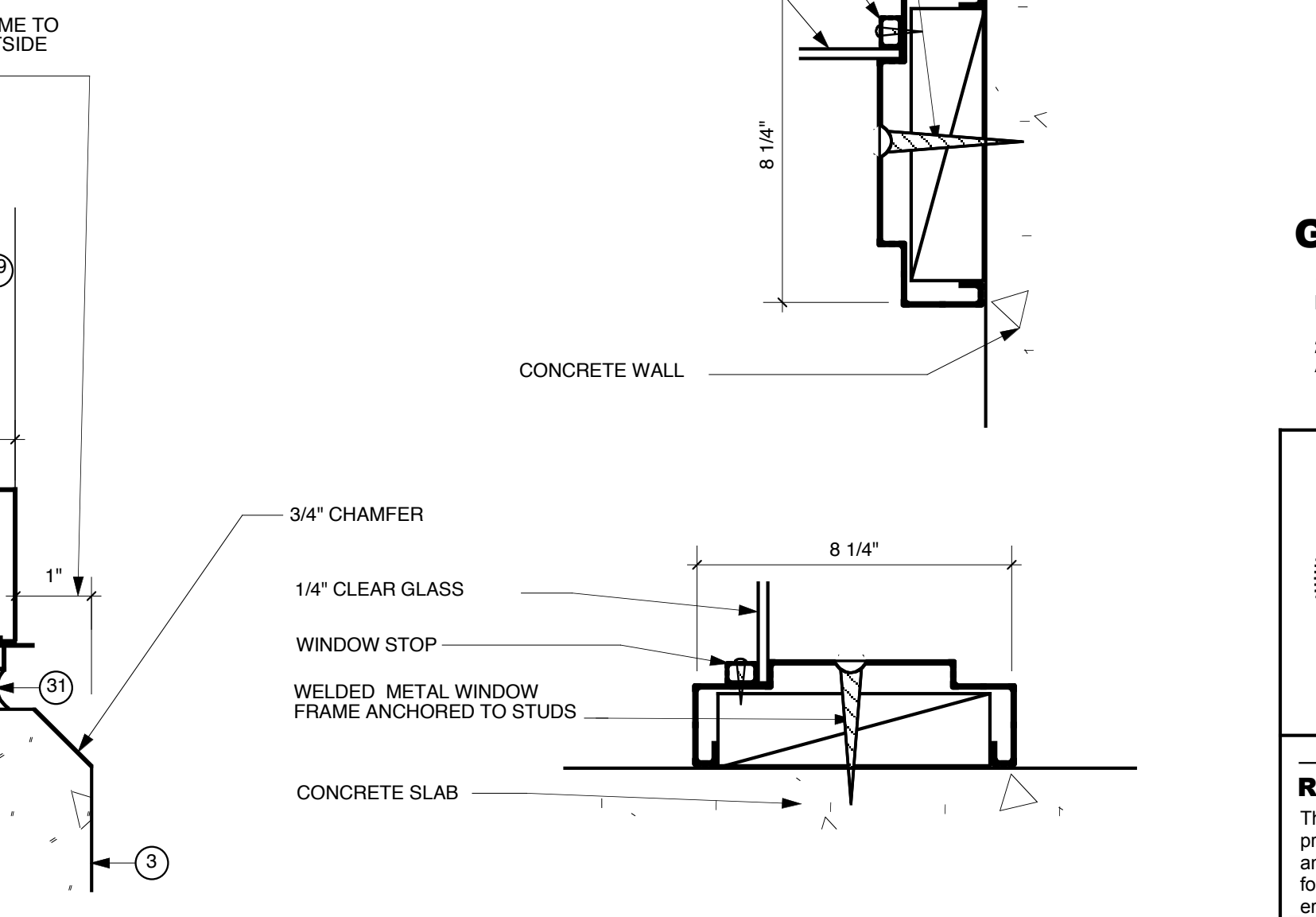
**9 JAMB @ WELDED H.M.**  
3" = 1'-0"



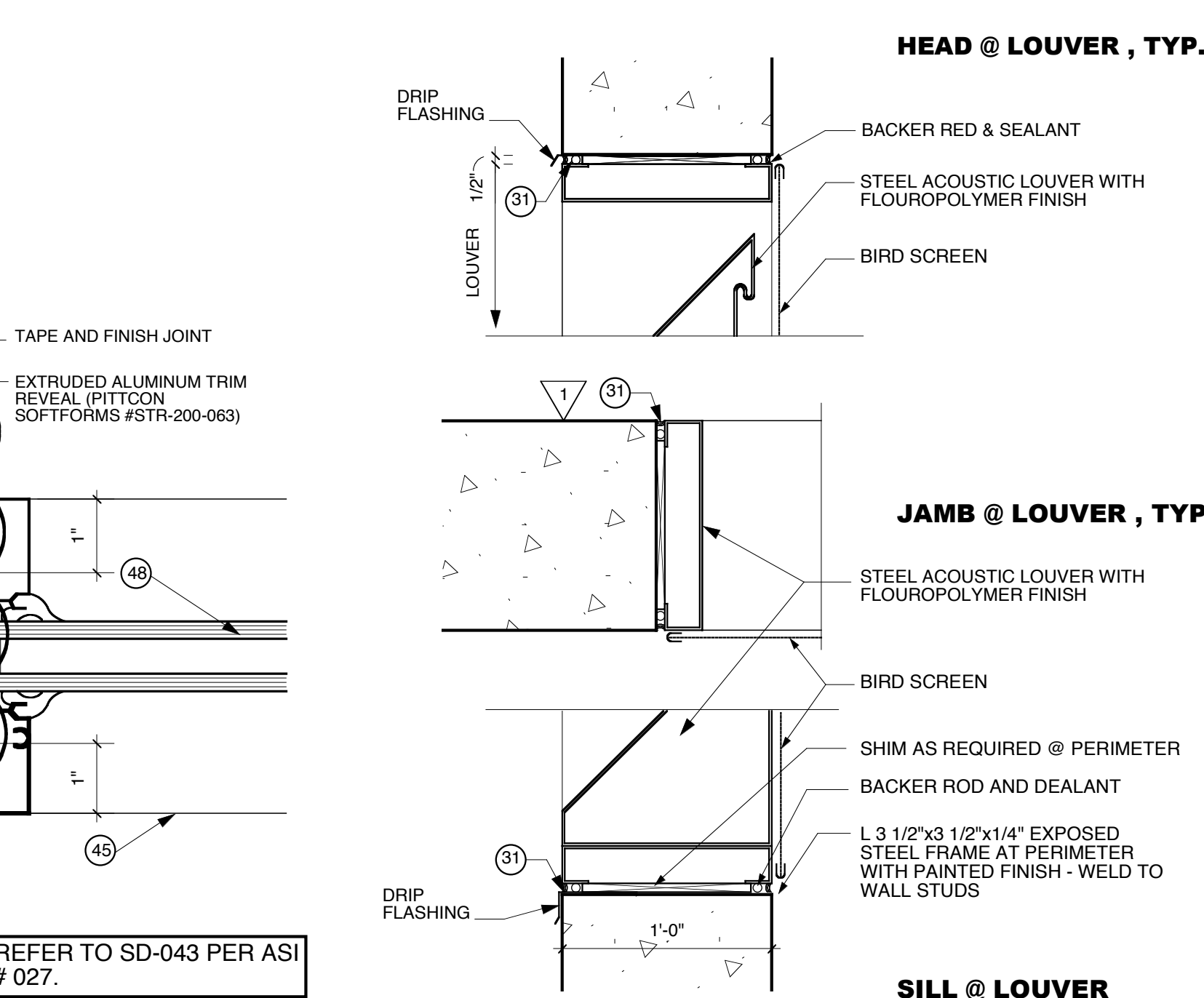
**10 SILL @ WELDED H.M.**  
3" = 1'-0"



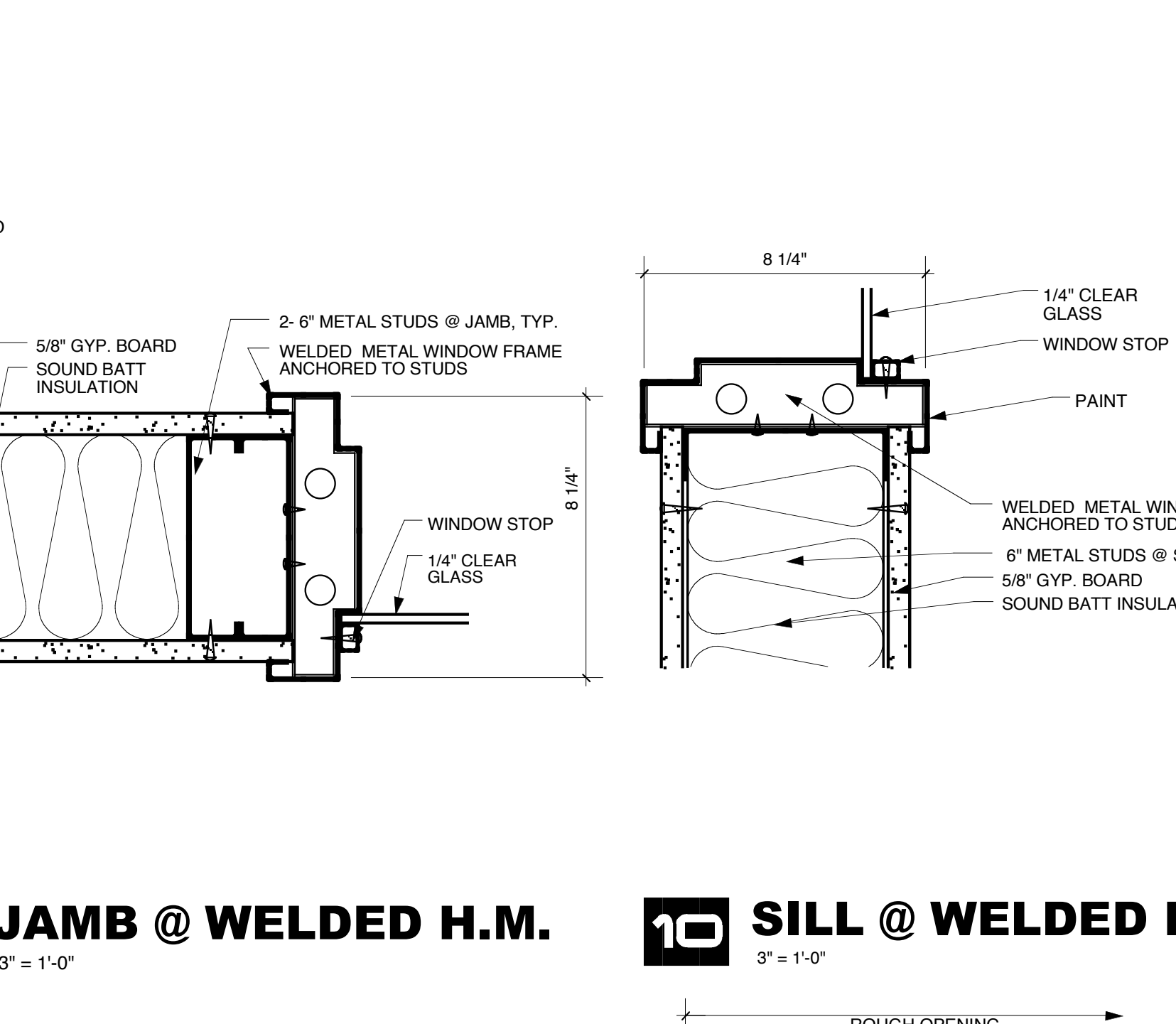
**11 JAMB @ WELDED H.M.**  
3" = 1'-0"



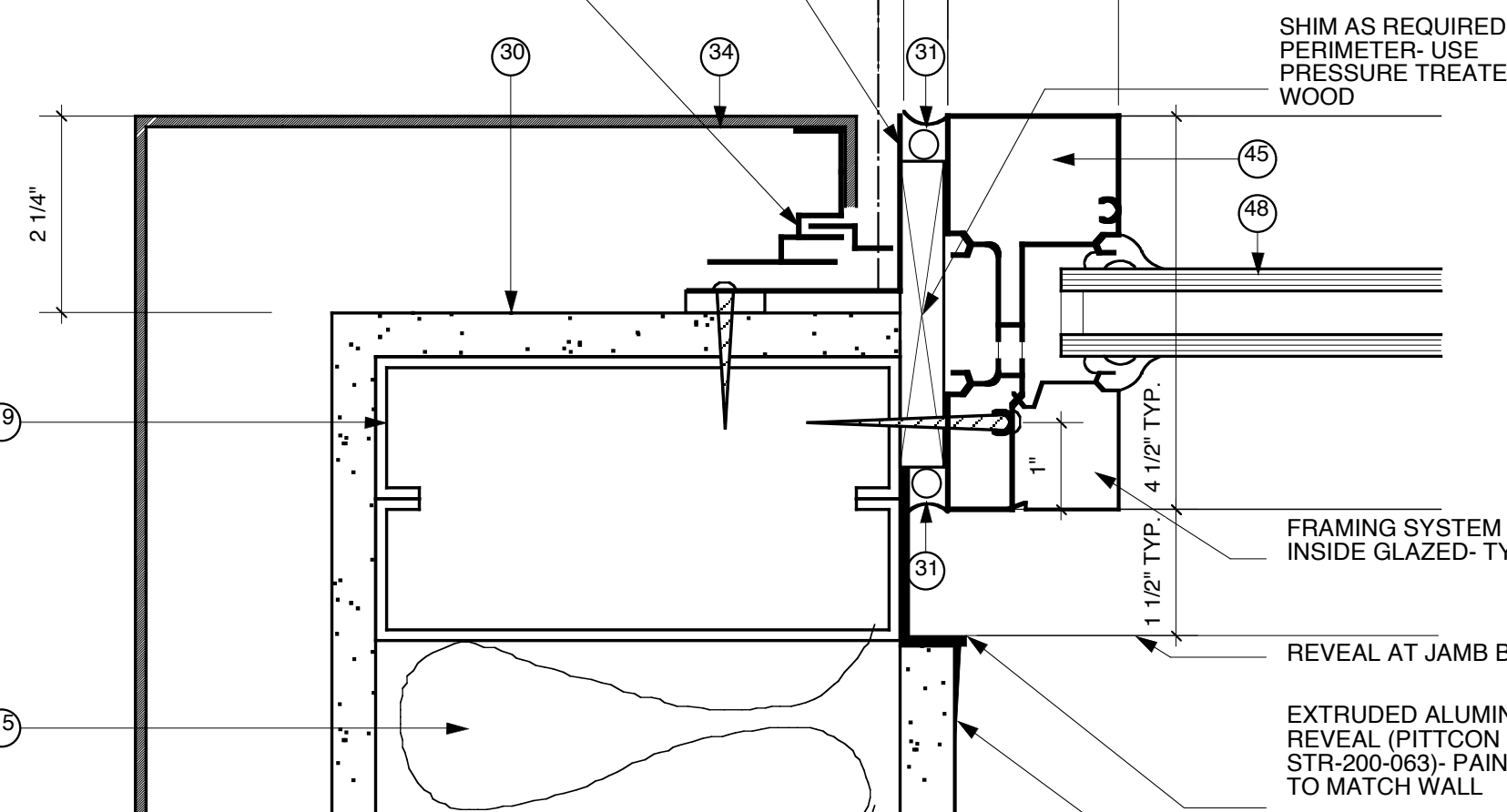
**12 JAMB @ WELDED H.M.**  
3" = 1'-0"



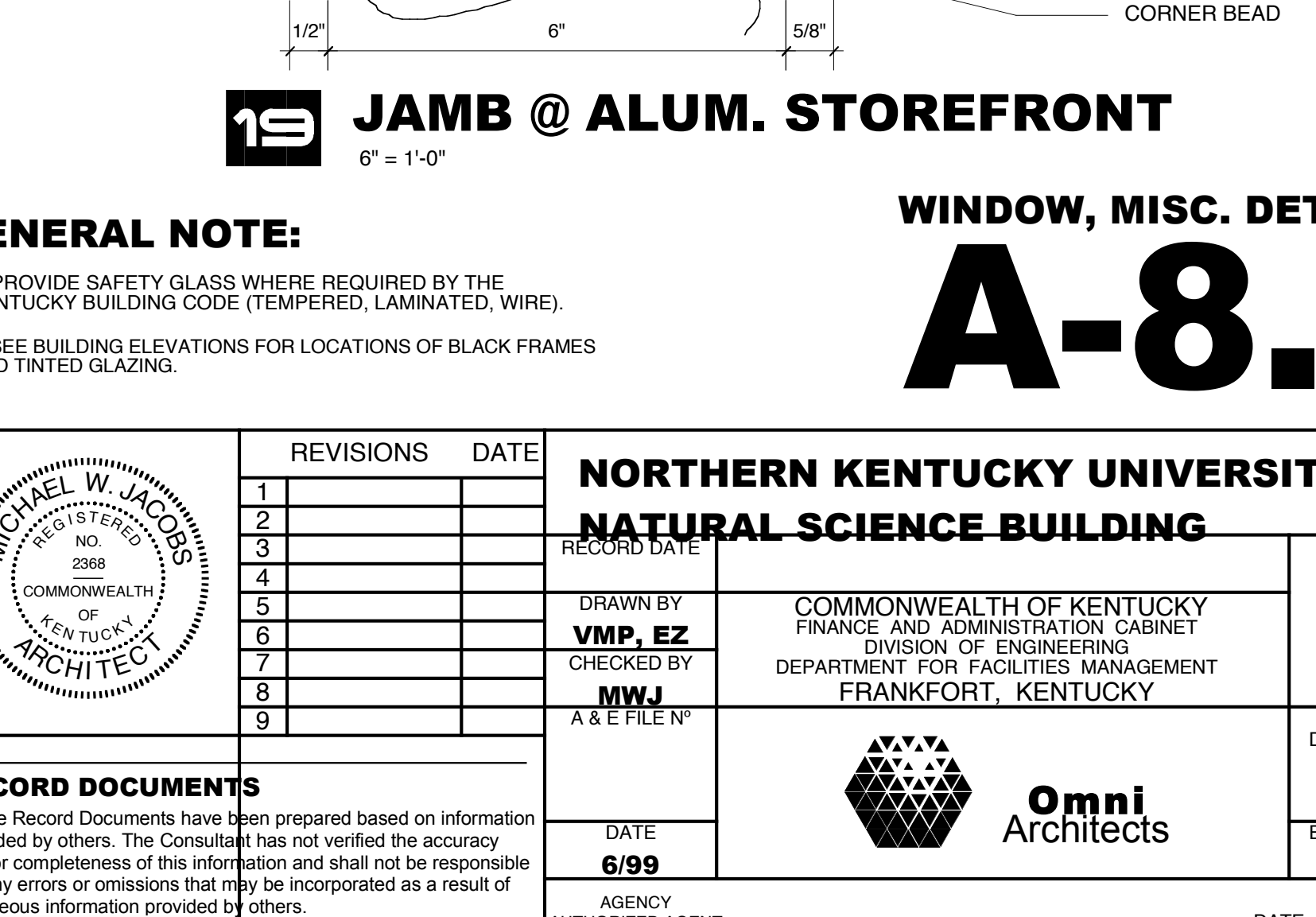
**13 HEAD @ LOUVER, TYP.**  
1 1/2" = 1'-0"



**14 JAMB @ LOUVER, TYP.**  
1 1/2" = 1'-0"



**15 SILL @ LOUVER**  
1 1/2" = 1'-0"



**16 JAMB @ WELDED H.M.**  
3" = 1'-0"

**GENERAL NOTE:**  
1. PROVIDE SAFETY GLASS WHERE REQUIRED BY THE KENTUCKY BUILDING CODE (TEMPERED, LAMINATED, WIRE).  
2. SEE BUILDING ELEVATIONS FOR LOCATIONS OF BLACK FRAMES AND TINTED GLAZING.

| NO. | REVISIONS | DATE |
|-----|-----------|------|
| 1   |           |      |
| 2   |           |      |
| 3   |           |      |
| 4   |           |      |
| 5   |           |      |
| 6   |           |      |
| 7   |           |      |
| 8   |           |      |
| 9   |           |      |

**NORTHERN KENTUCKY UNIVERSITY**  
**NATURAL SCIENCE BUILDING**

RECORD DATE: 6/99

DATE: 12/1/02

APPROVED FOR PROGRAM CONCEPT ONLY

**Omni ARCHITECTS**

12/1/02

APPROVED FOR PROGRAM CONCEPT ONLY

**RECORD DOCUMENTS**

These Record Documents have been prepared based on information provided by others. The Consultant has not verified the accuracy and/or completeness of this information and shall not be responsible for any errors or omissions that may be incorporated as a result of erroneous information provided by others.

**Omni ARCHITECTS**

12/1/02

APPROVED FOR PROGRAM CONCEPT ONLY

**Omni ARCHITECTS**

12/1/02

APPROVED FOR PROGRAM CONCEPT ONLY

**Omni ARCHITECTS**

12/1/02

APPROVED FOR PROGRAM CONCEPT ONLY

**WINDOW, MISC. DETAILS**  
**A-8.8**

**RECORD DOCUMENTS**

These Record Documents have been prepared based on information provided by others. The Consultant has not verified the accuracy and/or completeness of this information and shall not be responsible for any errors or omissions that may be incorporated as a result of erroneous information provided by others.

**Omni ARCHITECTS**

12/1/02

APPROVED FOR PROGRAM CONCEPT ONLY

**Omni ARCHITECTS**

12/1/02

APPROVED FOR PROGRAM CONCEPT ONLY