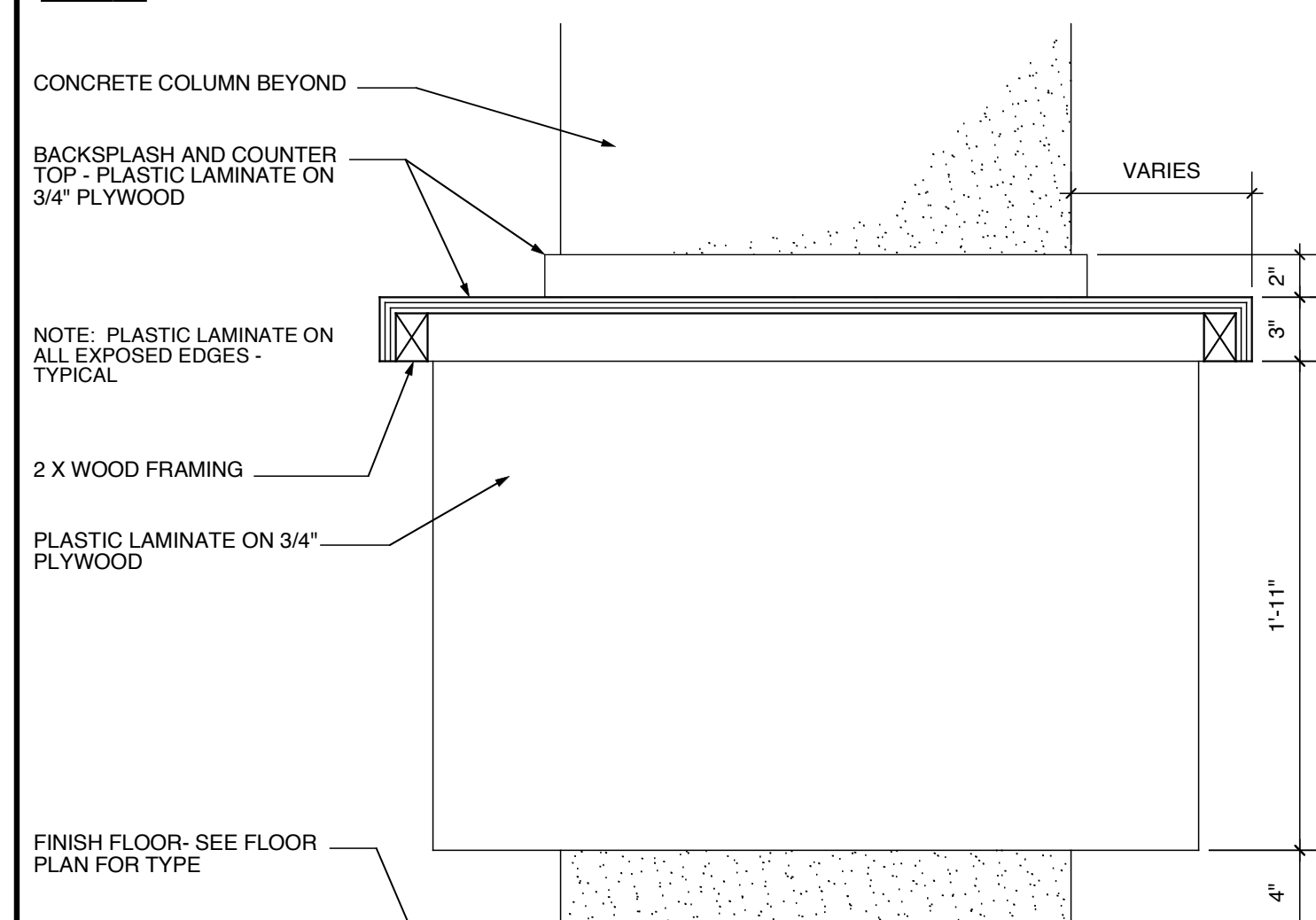
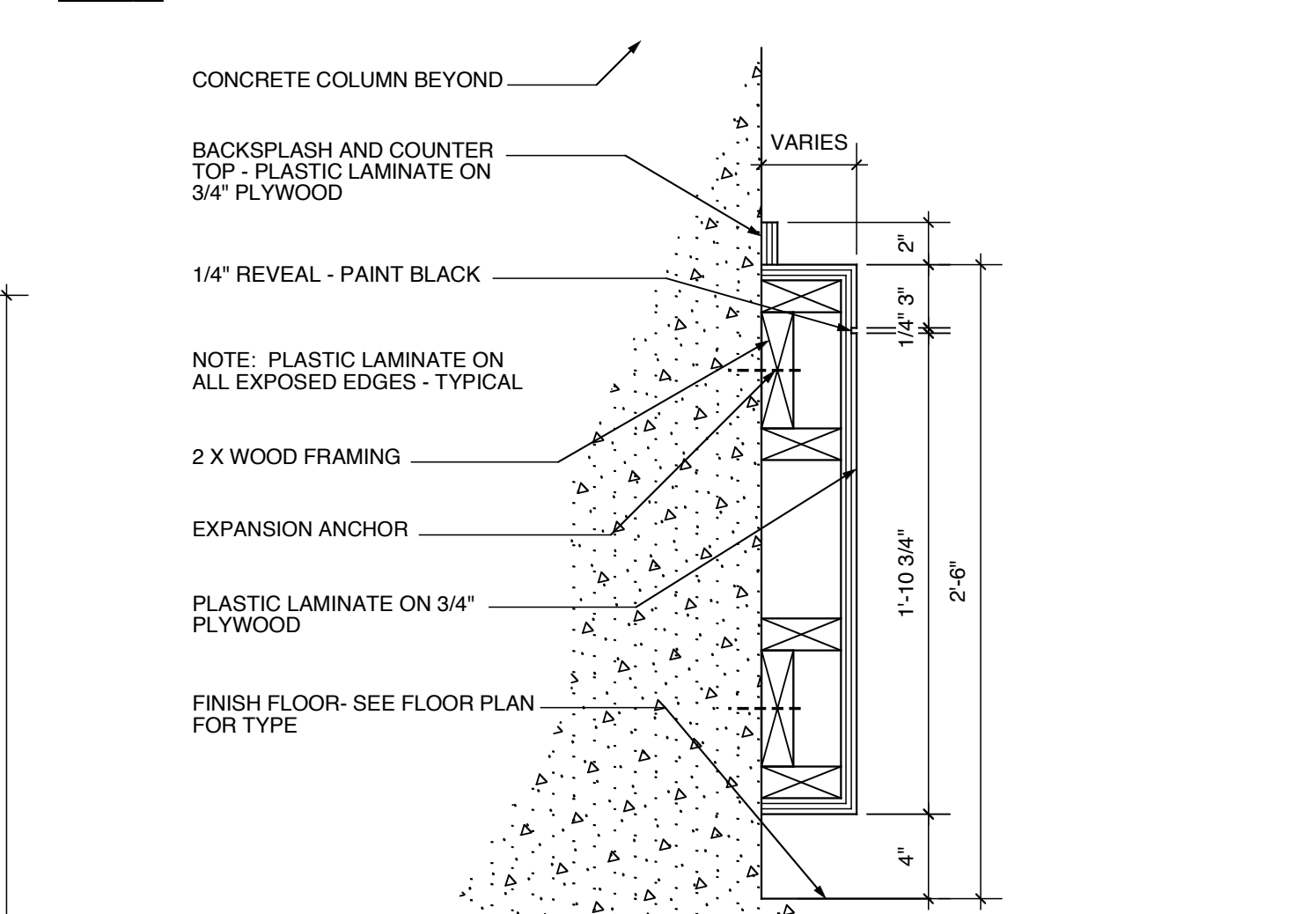


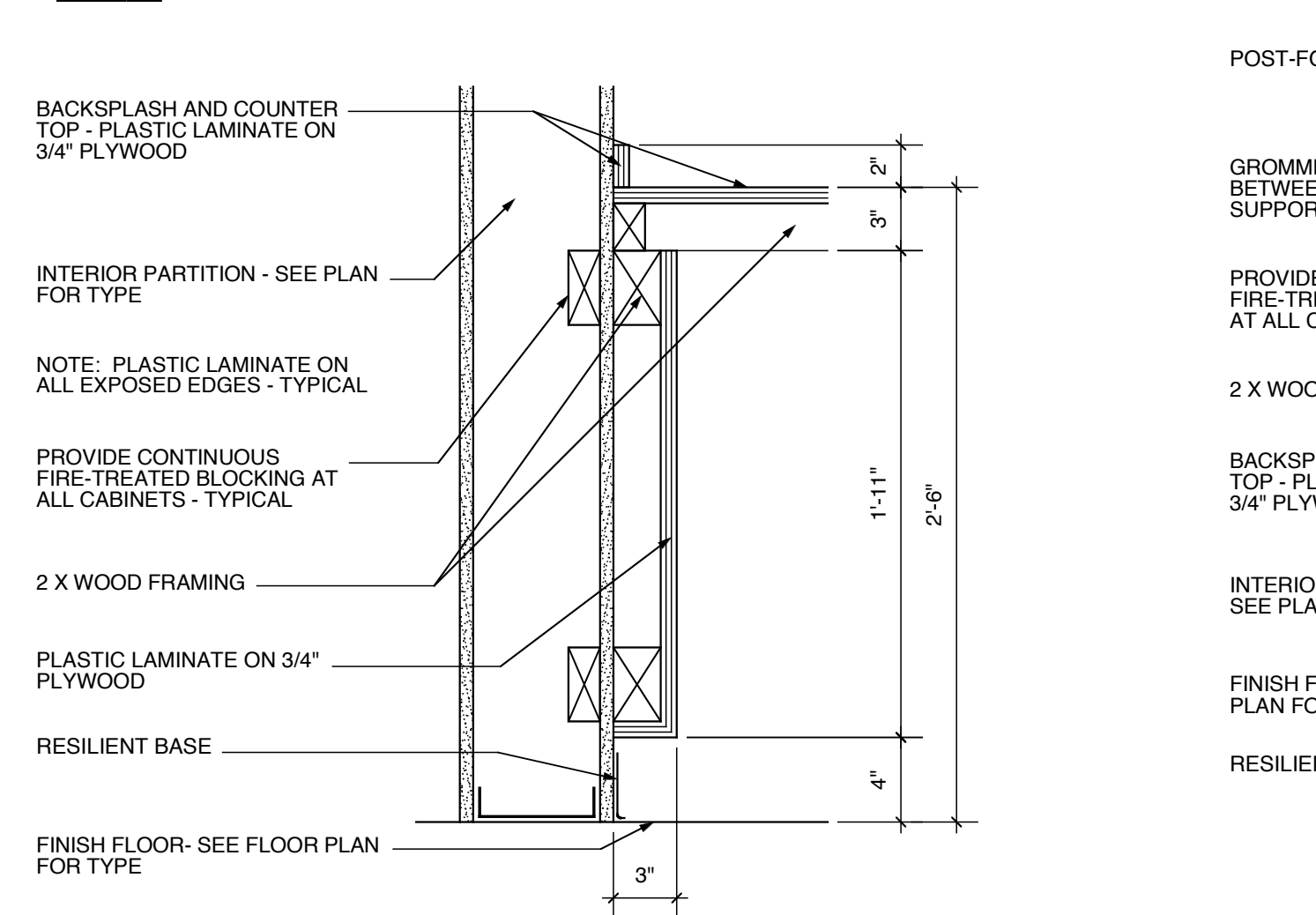
1 CASEWORK DETAIL
1 1/2" = 1'



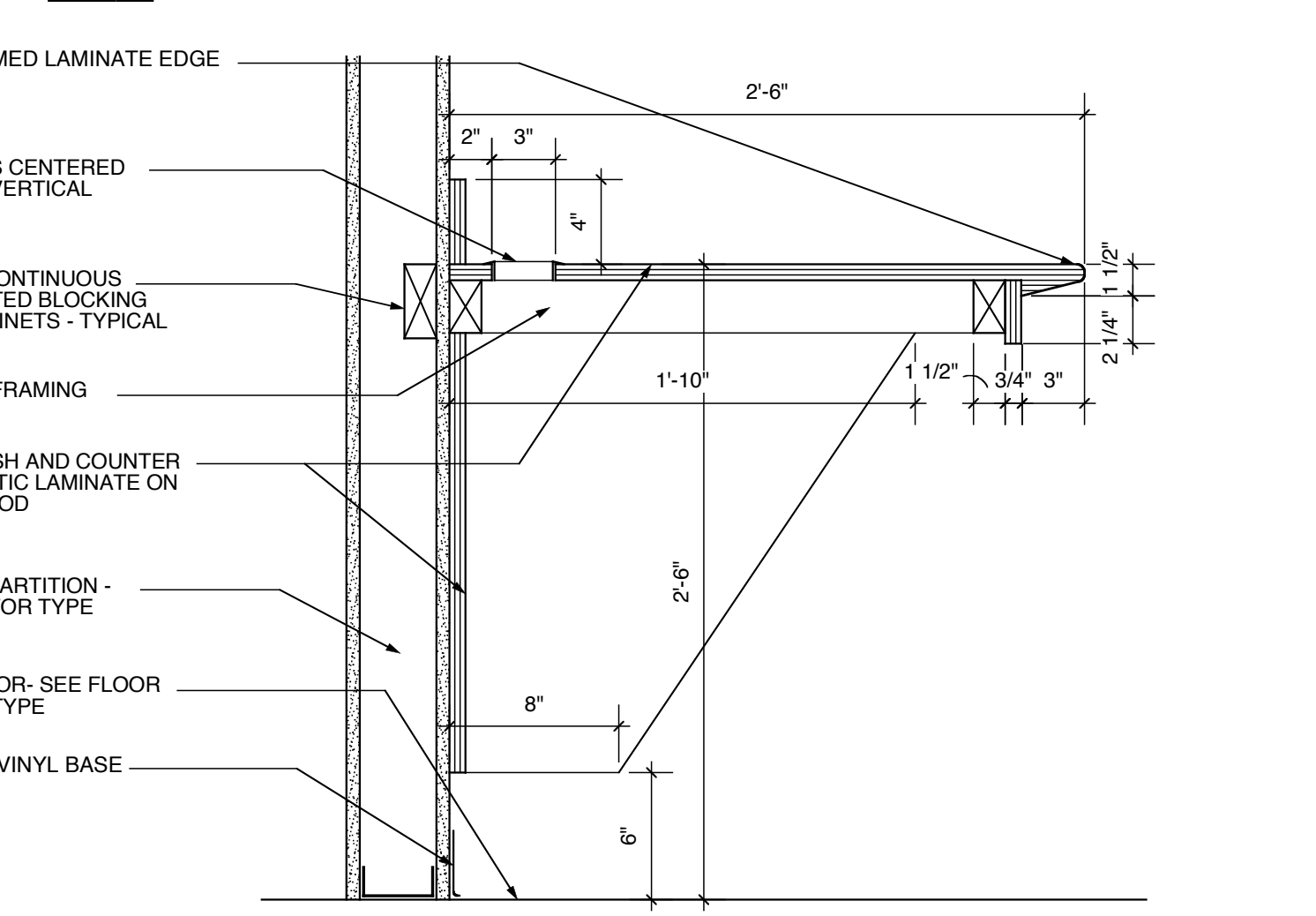
2 CASEWORK DETAIL
1 1/2" = 1'



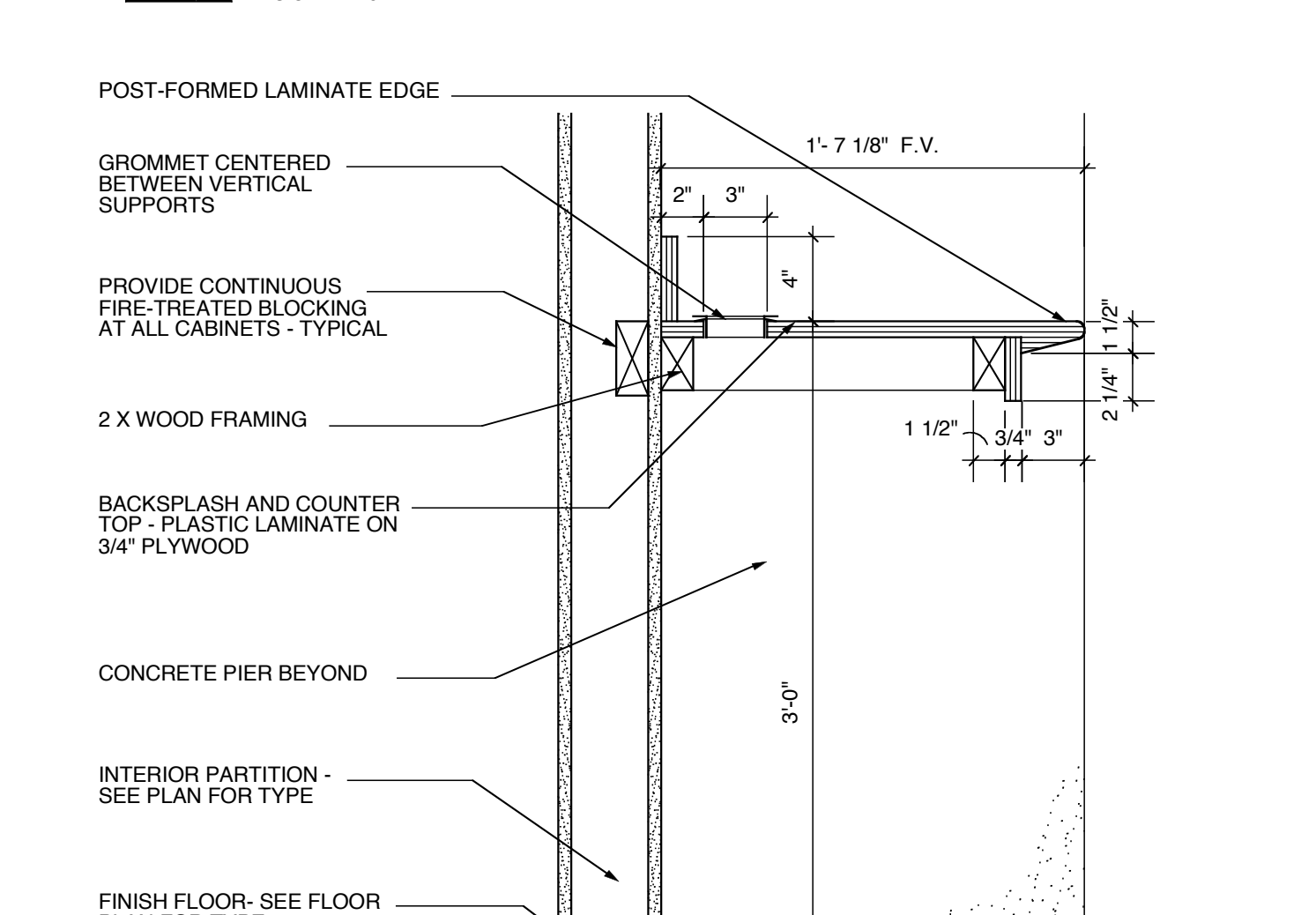
3 CASEWORK DETAIL
1 1/2" = 1'



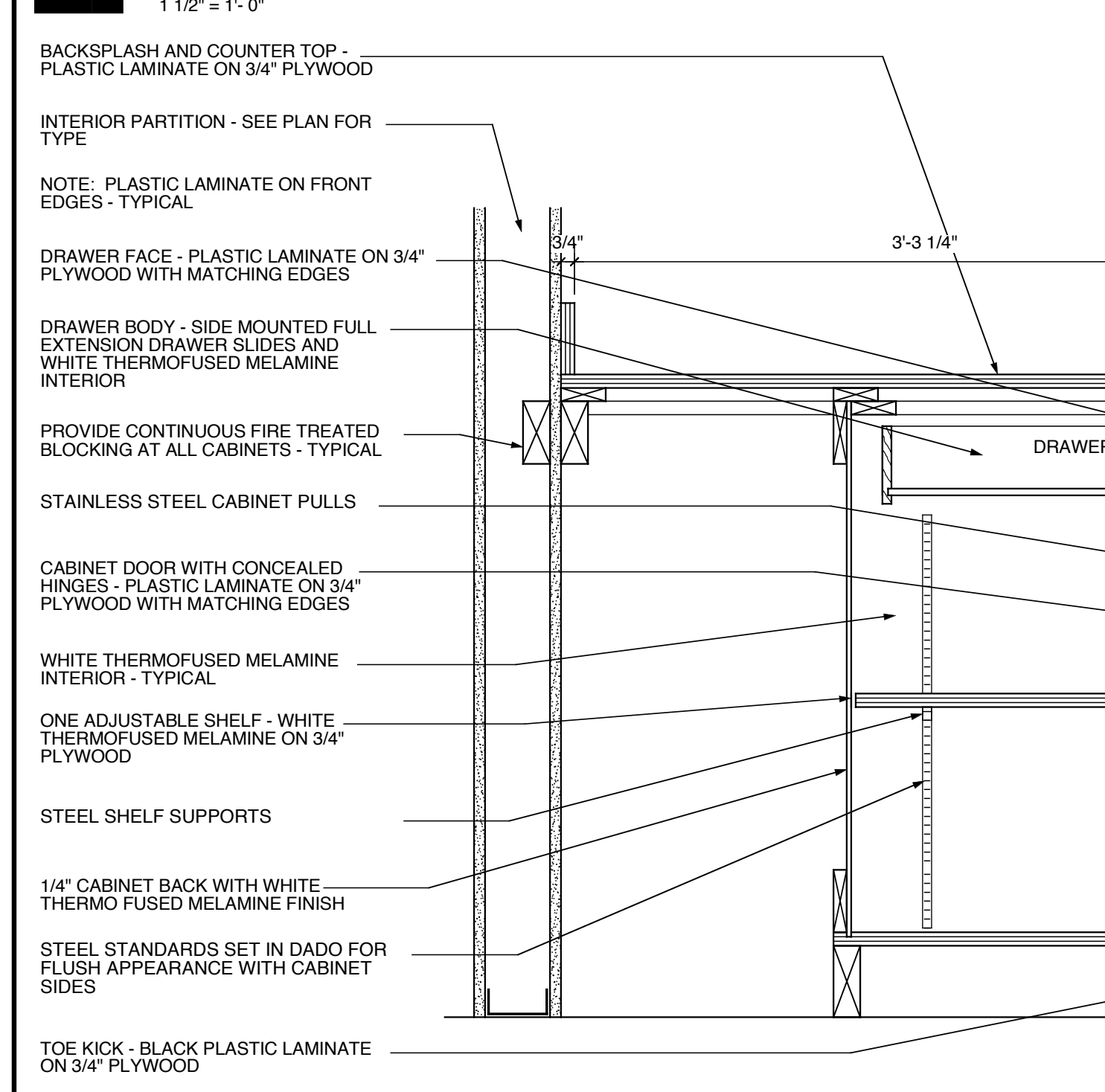
4 CASEWORK PLAN
3/8\"/>



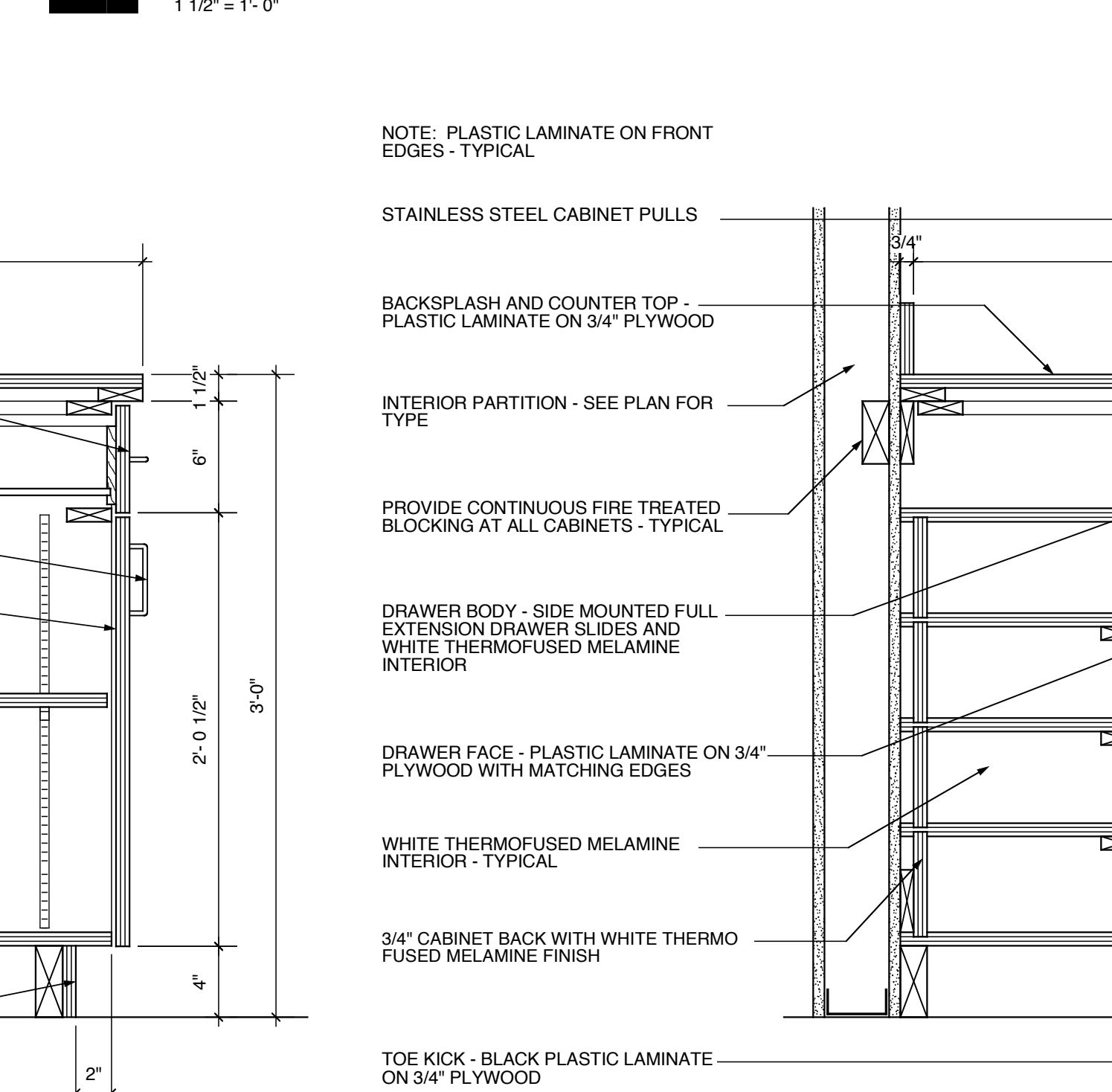
5 CASEWORK ELEVATION
3/8\"/>



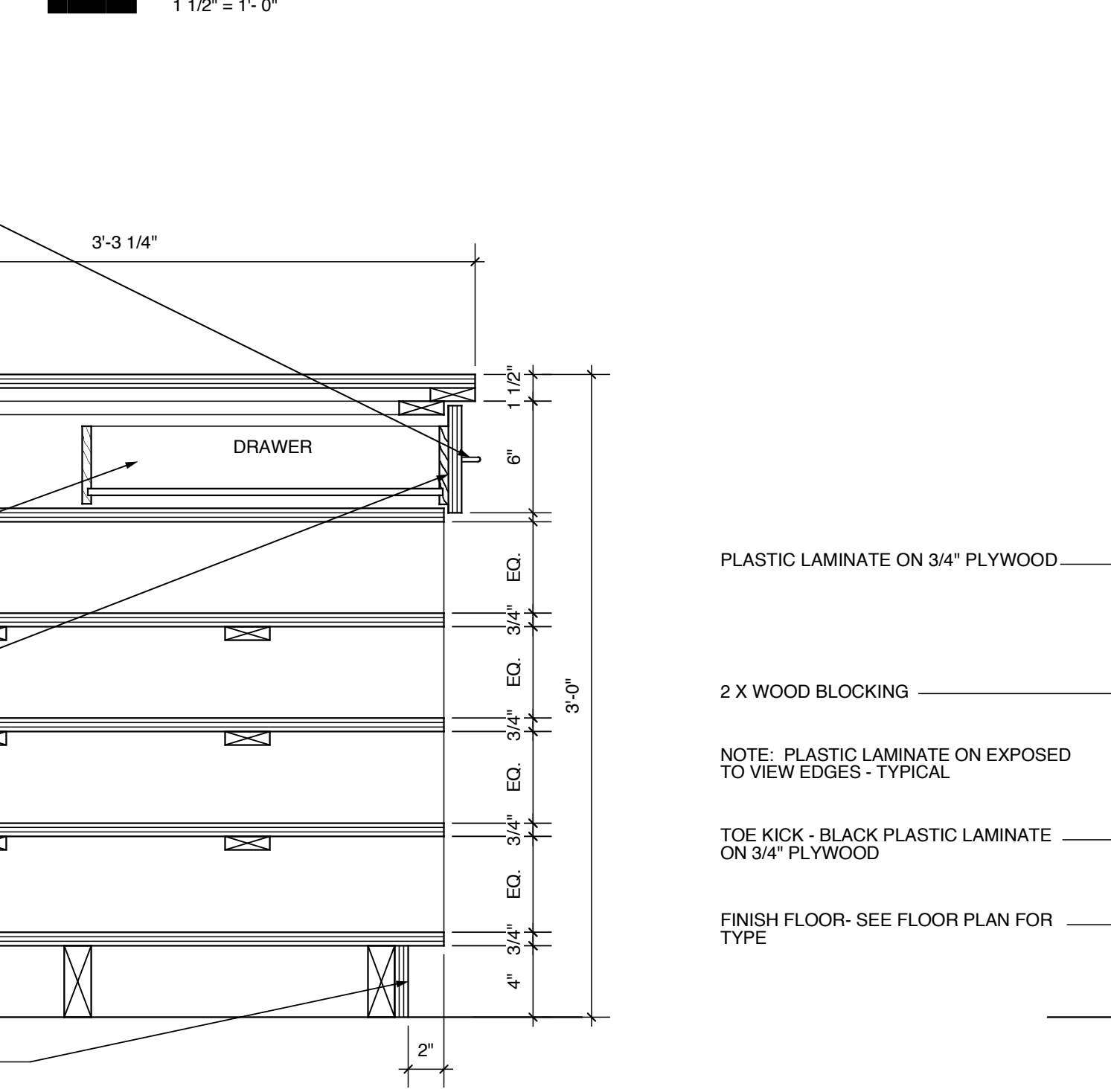
6 CASEWORK DETAIL
1 1/2\"/>



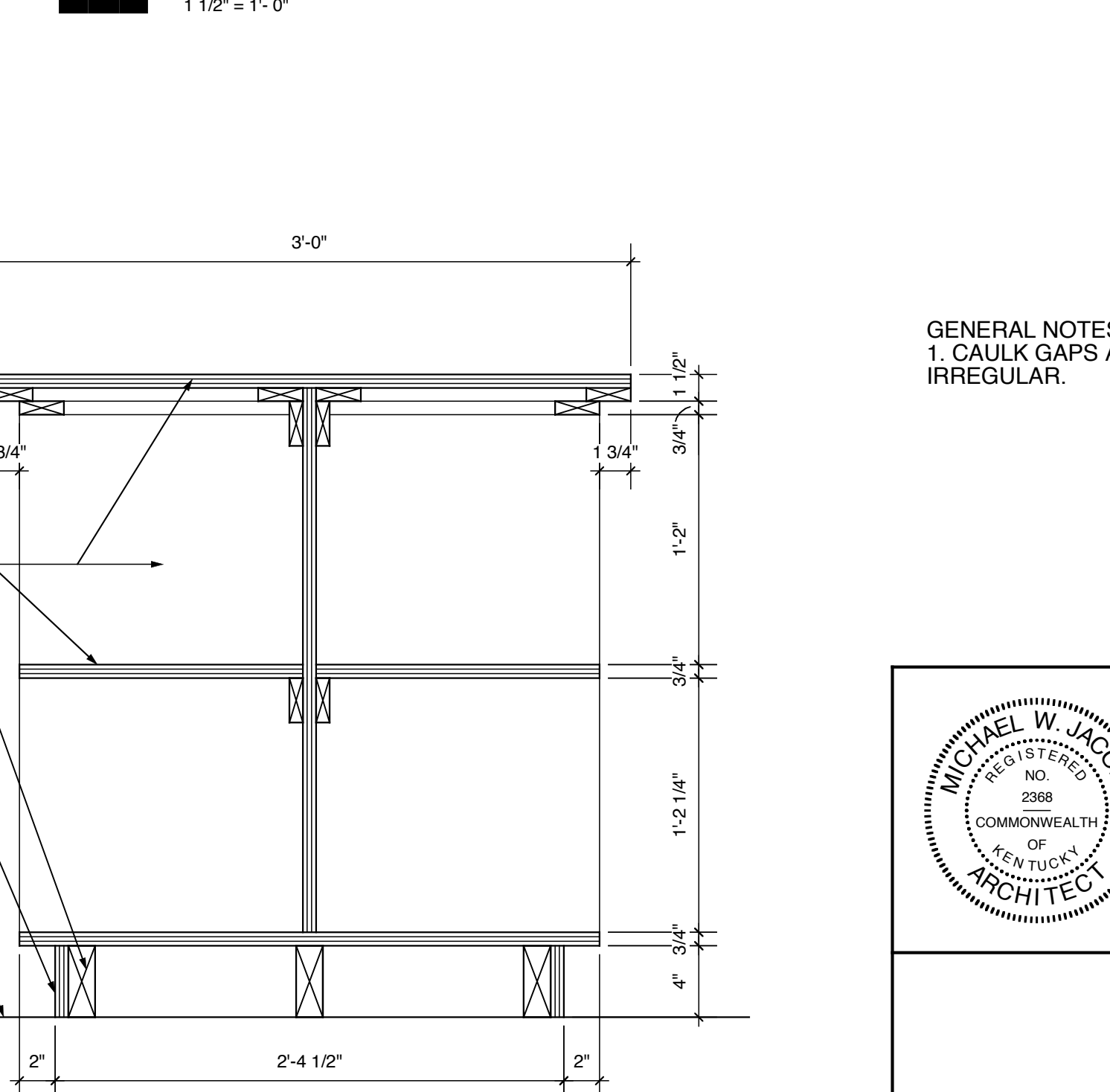
7 CASEWORK DETAIL
1 1/2\"/>



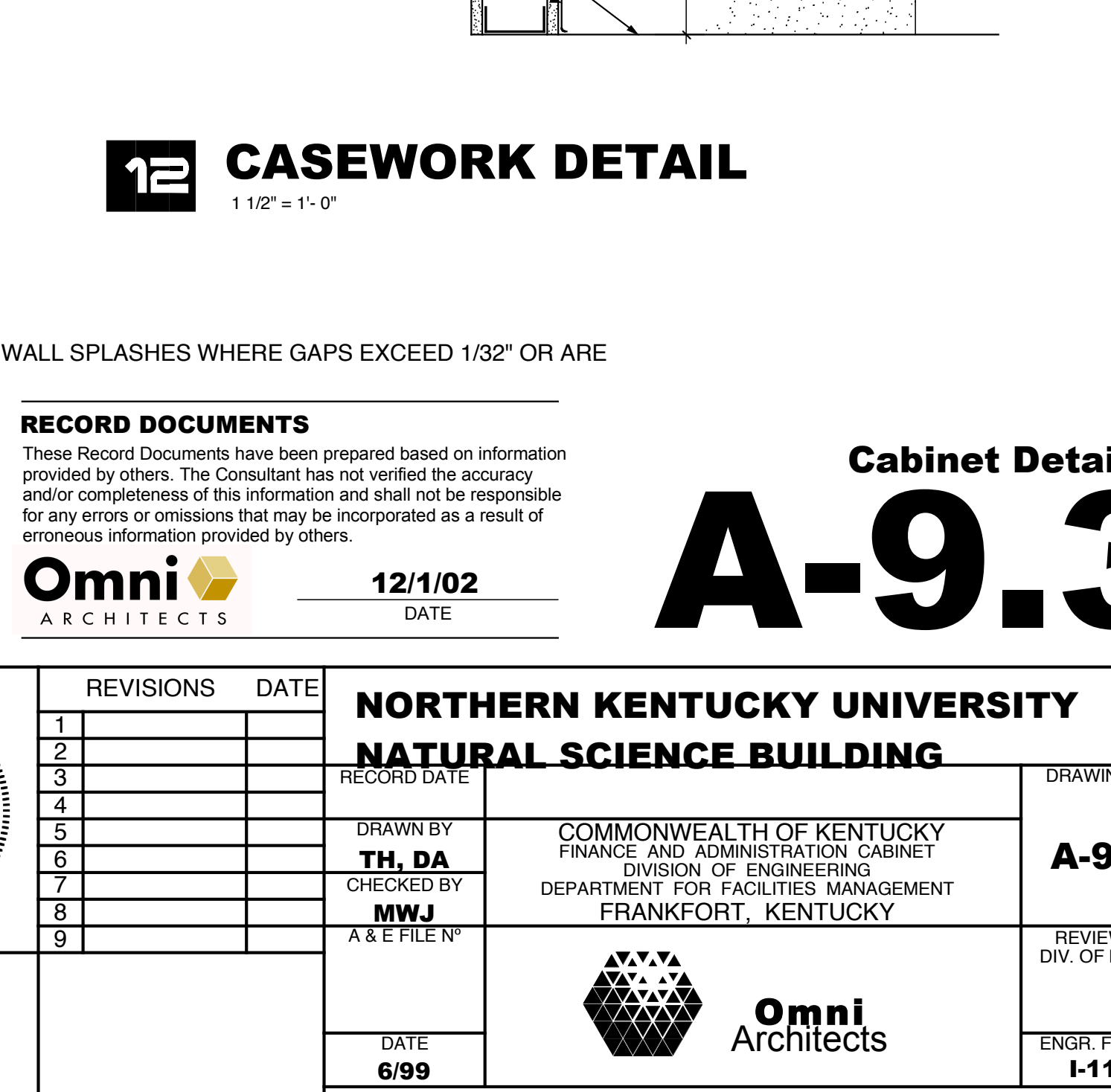
8 CASEWORK DETAIL
1 1/2\"/>



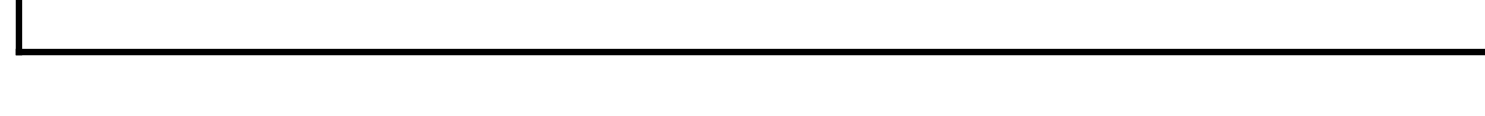
9 CASEWORK DETAIL
1 1/2\"/>



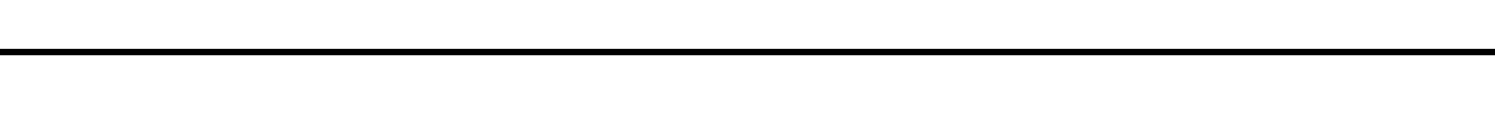
10 CASEWORK DETAIL
1 1/2\"/>



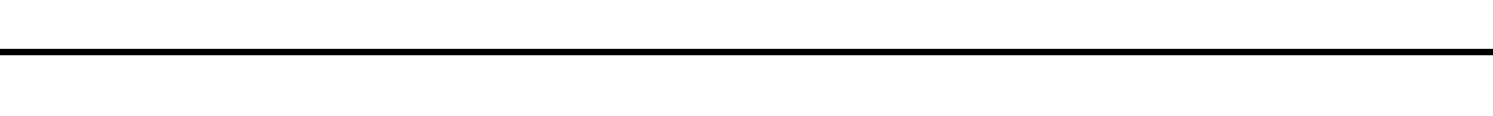
11 CASEWORK DETAIL
1 1/2\"/>



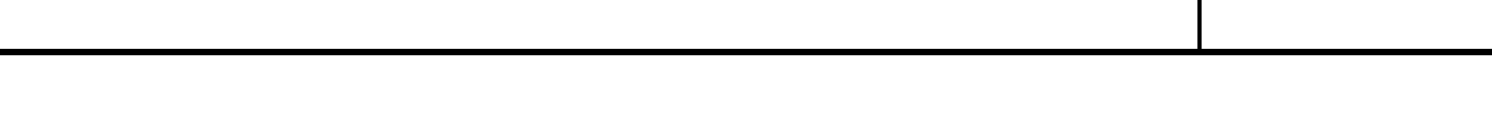
12 CASEWORK DETAIL
1 1/2\"/>



13 CASEWORK DETAIL
1 1/2\"/>



14 CASEWORK DETAIL
1 1/2\"/>



15 CASEWORK DETAIL
1 1/2\"/>



GENERAL NOTES:
1. CAULK GAPS AT WALL SPLASHES WHERE GAPS EXCEED 1/32\"/>

RECORD DOCUMENTS
These Record Documents have been prepared based on information provided by others. The Consultant has not verified the accuracy and/or completeness of this information and shall not be responsible for any errors or omissions that may be incorporated as a result of erroneous information provided by others.

Omni Architects 12/1/02 DATE

Cabinet Details
A-9.3

REVISIONS	DATE
1	
2	
3	
4	
5	
6	
7	
8	
9	

NORTHERN KENTUCKY UNIVERSITY
NATURAL SCIENCE BUILDING

DRAWN BY: **TH_DA**
CHECKED BY: **MWJ**
A & E FILE NO:

COMMONWEALTH OF KENTUCKY
FINANCE AND ADMINISTRATION CABINET
DIVISION OF ENGINEERING
DEPARTMENT FOR FACILITIES MANAGEMENT
FRANKFORT, KENTUCKY

Omni Architects

DATE: **6/99**
AGENCY AUTHORIZED AGENT: _____ DATE: _____
DIVISION OF ENGINEERING: _____ APPROVED FOR PROGRAM CONCEPT ONLY: _____ DATE: _____
APPROVED FOR PROGRAM CONCEPT ONLY: _____ DATE: _____