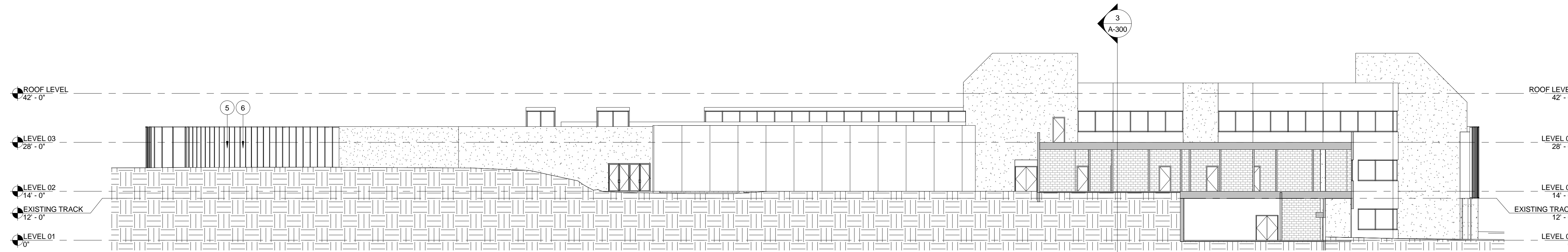
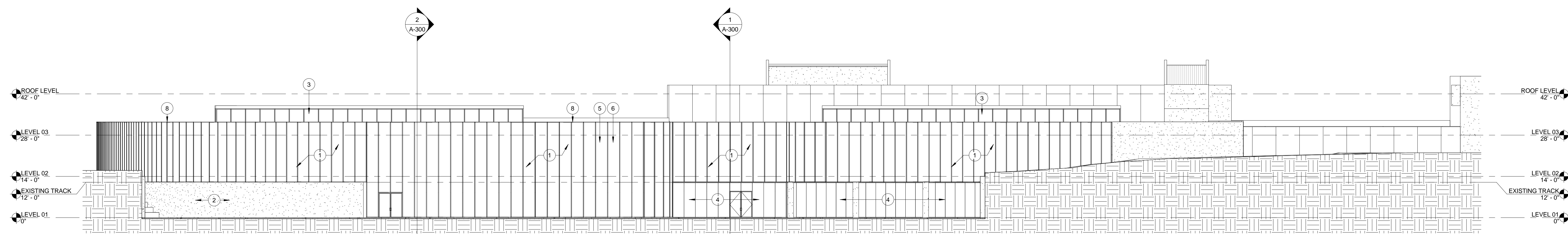


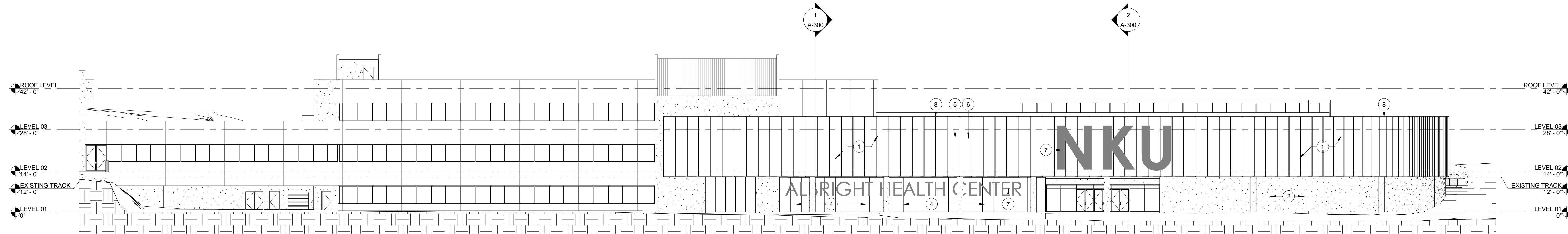
4 OVERALL WEST ELEVATION
1/16" = 1'-0"



3 OVERALL EAST ELEVATION
1/16" = 1'-0"



2 OVERALL SOUTH ELEVATION
1/16" = 1'-0"



1 OVERALL NORTH ELEVATION
1/16" = 1'-0"

KEYED NOTES ELEVATIONS	
Type	Description
1	CLEAR ANODIZED ALUMINUM CURTAIN WALL ASSEMBLY w/1" INSULATED GLAZING, STRUCTURAL SILICONE GLAZED HORIZONTALS
2	CAST-IN-PLACE CONCRETE WALL
3	CLERESTORY WINDOW ASSEMBLY
4	CLEAR ANODIZED ALUMINUM STOREFRONT ASSEMBLY w/1" INSULATED GLAZING, 4-WAY STRUCTURAL SILICONE GLAZING SYSTEM
5	NOTE: 30% OF CURTAIN WALL GLAZING TO BE CERAMIC FRITTED ON #2 FACE OF GLAZING UNITS
6	NOTE: 30% OF CURTAIN WALL GLAZING TO BE INSULATED SPANDREL PANEL w/CERAMIC FRITTED #2 FACE & BACKPAINTED #4 FACE OF GLAZING UNITS. INTERIOR FINISH TO BE COMPOSITE METAL PANEL w/CLEAR ANODIZED FINISH.
7	GRAPHIC PVB INTERLAYER, TYP. ALL GLAZING UNITS WHERE LETTERING IS PRESENT
8	ALUMINUM COPING, FINISH TO MATCH CURTAIN WALL ASSEMBLY

Northern Kentucky University - Student Recreation Center

Omni ARCHITECTS
212 North Upper Street
Lexington, Kentucky 40507-1001
p 859.252.6664 f 859.253.2358
www.omniarchitects.com

CANNONDESIGN

NORTHERN KENTUCKY UNIVERSITY



Revision Date	#	OVERALL BUILDING ELEVATIONS
	003869.00	
	05/25/12	
Author	Checked By:	Checker

Drawing Name: NKU Project Number: 003869.00
Project Number: 05/25/12
Date: 05/25/12
Author: Checked By: Checker