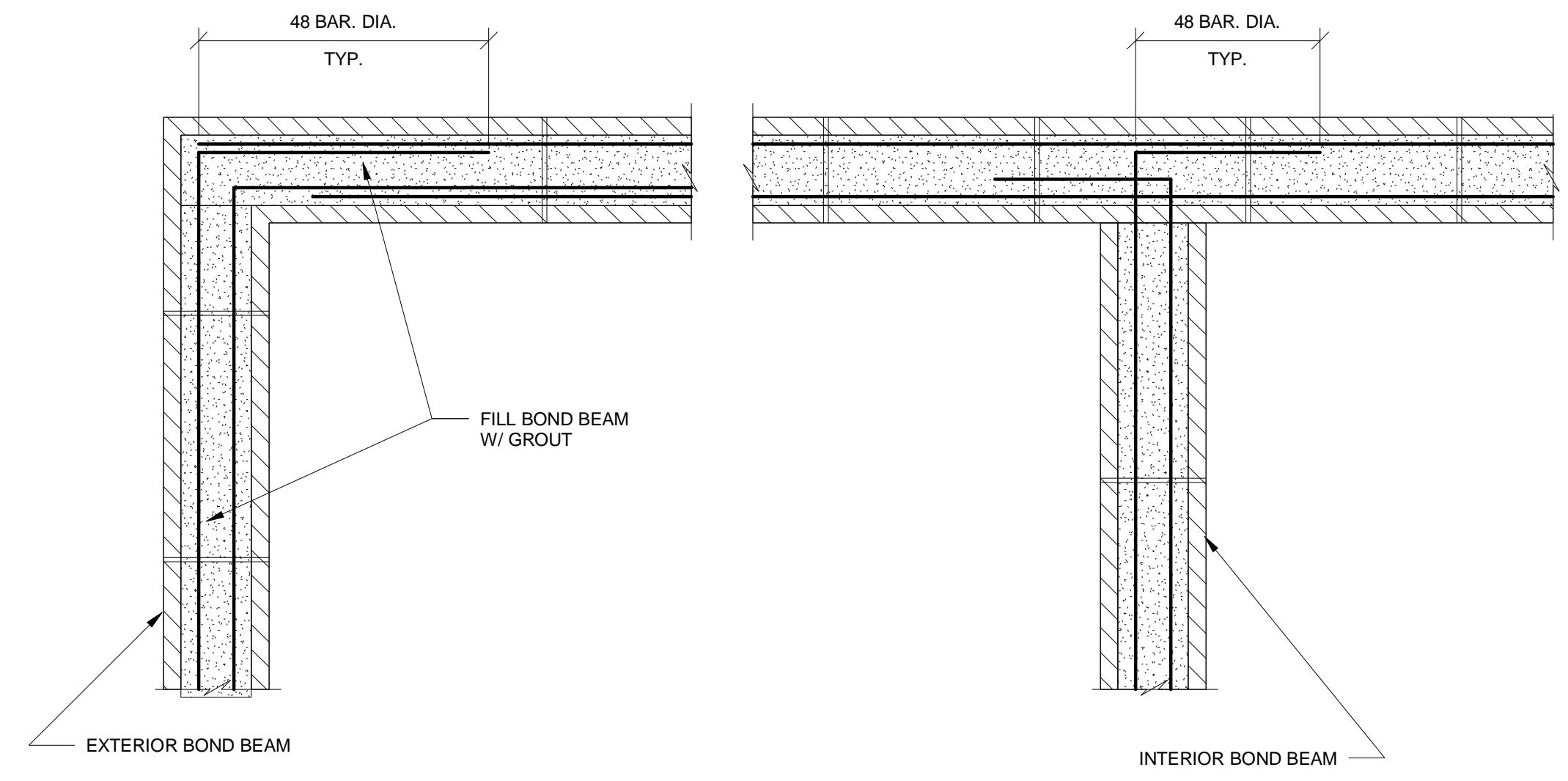


1 SECTION  
S-1.1 3/4" = 1'-0"



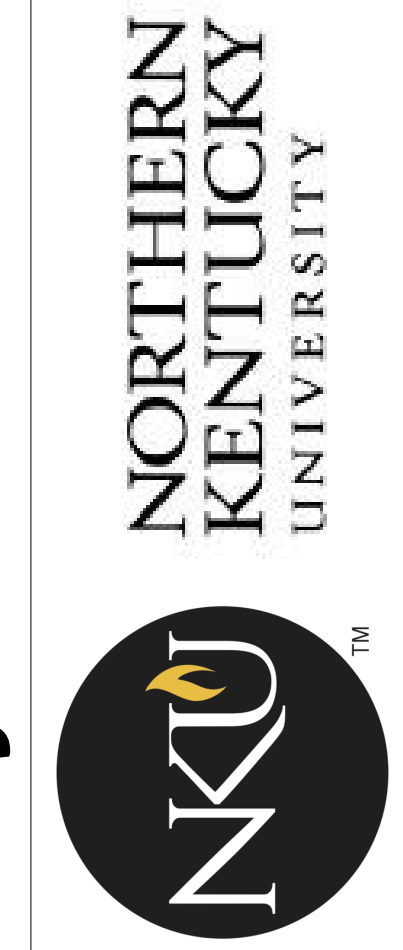
2 SECTION  
S-1.1 3/4" = 1'-0"

# Northern Kentucky University - Intramural Field and Support Building

STANDARD DETAILS	#	Revision Date

Drawing Name:  
NKU Project Number:  
Project Number:  
Date:  
Drawn By: Author  
Checked By: Checker

11107  
7-11-12



**Omni**  
ARCHITECTS  
212 North Upper Street  
Lexington, Kentucky 40507-1001  
p 859.252.6664 f 859.253.2358  
www.omniarchitects.com

**CANNONDESIGN**

**bfmj**  
Basil Fryer McRynolds, J.D.  
Consulting Structural Engineers  
11107  
LEXINGTON, KY 40507  
TEL: 859.253.2358  
FAX: 859.253.2358

