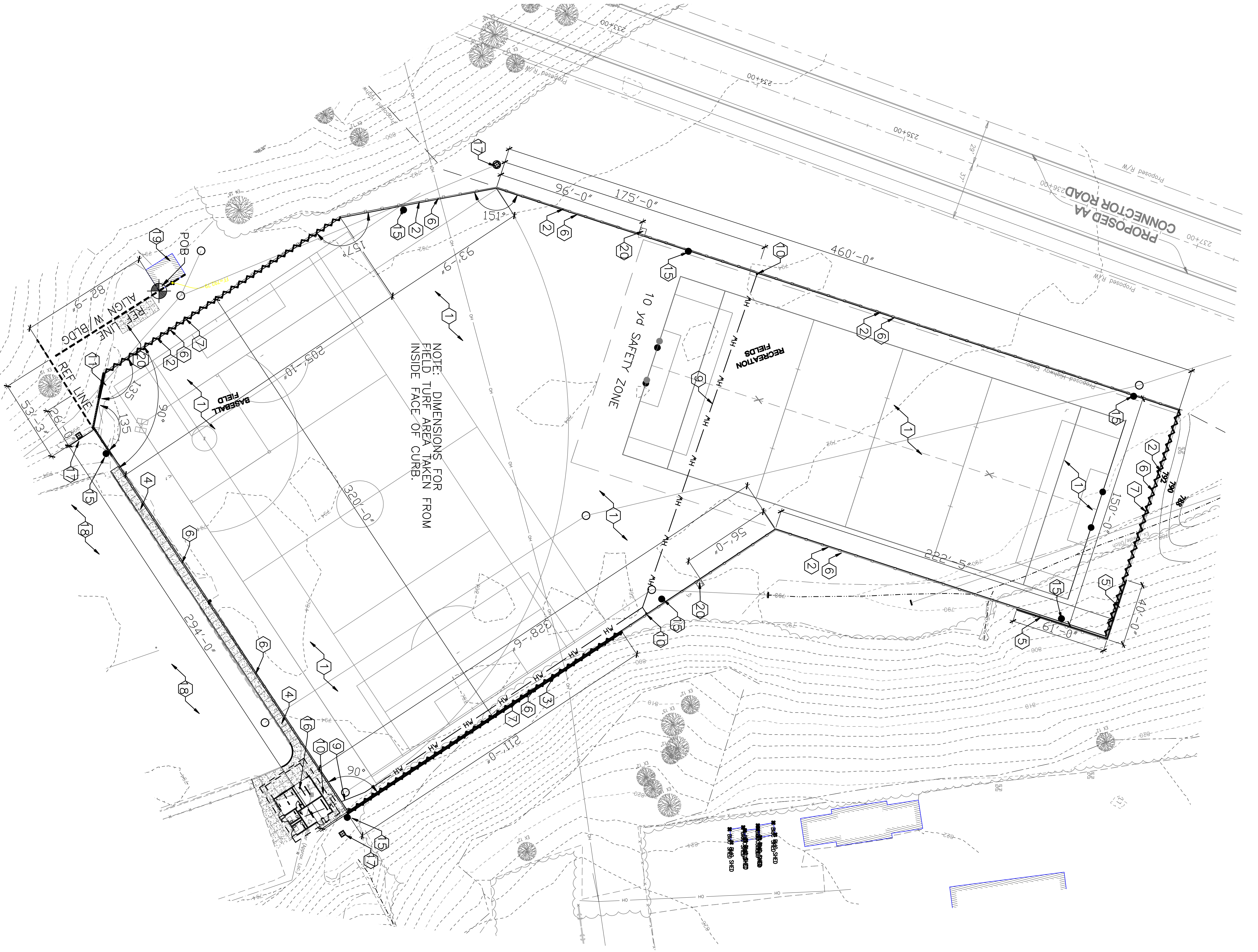
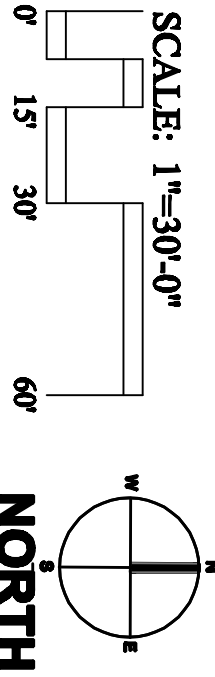


1 LAYOUT  
SCALE: 1"=30'-0"



PRELIMINARY  
NOT FOR CONSTRUCTION



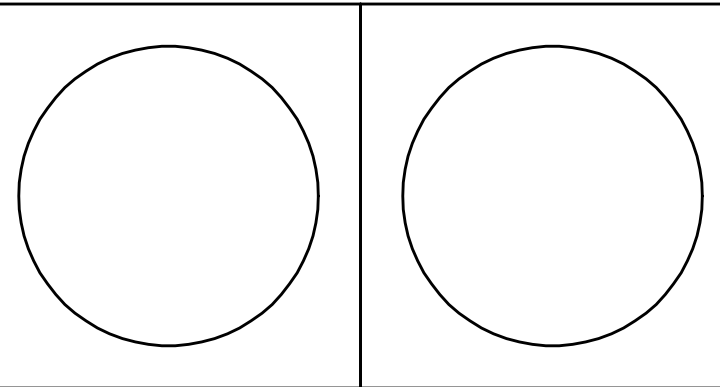
- CODED NOTES:**
- 1 SYNTHETIC FIELD TURF. SEE SPECIFICATIONS.
  - 2 CONCRETE CURB FOR FIELD. SEE DETAIL. SHEET \_\_\_\_\_
  - 3 CONCRETE RETAINING WALL. SEE DETAIL. SHEET \_\_\_\_\_
  - 4 CONCRETE SIDEWALK AND CURB. SEE DETAIL. SHEET \_\_\_\_\_
  - 5 SEGMENTAL RETAINING WALL. SEE DETAIL. SHEET \_\_\_\_\_
  - 6 8" HT. VINYL COATED CHAINLINK FENCE. SEE DETAIL. SHEET \_\_\_\_\_
  - 7 20' HT. NYLON NETTING ABOVE C.L. FENCE. SEE DETAIL. SHEET \_\_\_\_\_
  - 8 4" WIDE GATE IN C.L. FENCE.
  - 9 3/4" DIA COLD WATER LINE. SEE MEP PLANS.
  - 10 HOSE BIB LOCATIONS. SEE DETAIL. SHEET \_\_\_\_\_
  - 11 SOFT BALL BACKSTOP. SEE DETAIL. SHEET \_\_\_\_\_
  - 12 SOCCER GOAL. INSTALL PER MFG. SPECIFICATIONS.
  - 13 FOOTBALL GOALPOST. INSTALL PER MFG. SPECIFICATIONS.
  - 14 LACROSSE GOAL. INSTALL PER MFG. SPECIFICATIONS.
  - 15 SPORTS FIELD LIGHTING POST LOCATION (7 TOTAL). SEE MEP PLANS.
  - 16 NEW FIELDHOUSE BUILDING. SEE ARCHITECT'S PLANS.
  - 17 DRAINAGE STRUCTURE. SEE CIVIL ENGINEERING PLANS.
  - 18 EXISTING PARKING LOT. PROTECT FROM DAMAGE.
  - 19 EXISTING BUILDING. PROTECT FROM DAMAGE.
  - 20 5" THICK CONCRETE PAVING. SEE DETAIL. SHEET \_\_\_\_\_

- ABBREVIATIONS:**
- TC TOP OF CURB
  - FG FINISH GRADE
  - FS FINISH SURFACE
  - FTE FINISH FLOOR ELEVATION
  - TW TOP OF WALL
  - FW FLOW FACED
  - POW POW FACED
  - RIM RIM ELEVATION

- GENERAL NOTES**
- A. CONTRACTOR TO LOCATE ALL UNDERGROUND UTILITIES PRIOR TO THE START OF WORK.
  - B. CONTRACTOR TO NOTIFY OWNER'S REPRESENTATIVE OF ANY DISCREPANCIES FOUND BETWEEN ACTUAL FIELD CONDITIONS AND LAYOUT INFORMATION PROVIDED.

# Northern Kentucky University -Intramural Fields & Support Building

Drawing Name: Layout and Materials Plan Sheet Name	#	Revision Date
NKU Project Number:		
Project Number:	Project Number	
Date: 7/11/2012	MM/DD/YEAR	
Drawn By: FCB	DRW	Checked By: CHK



L-1.0