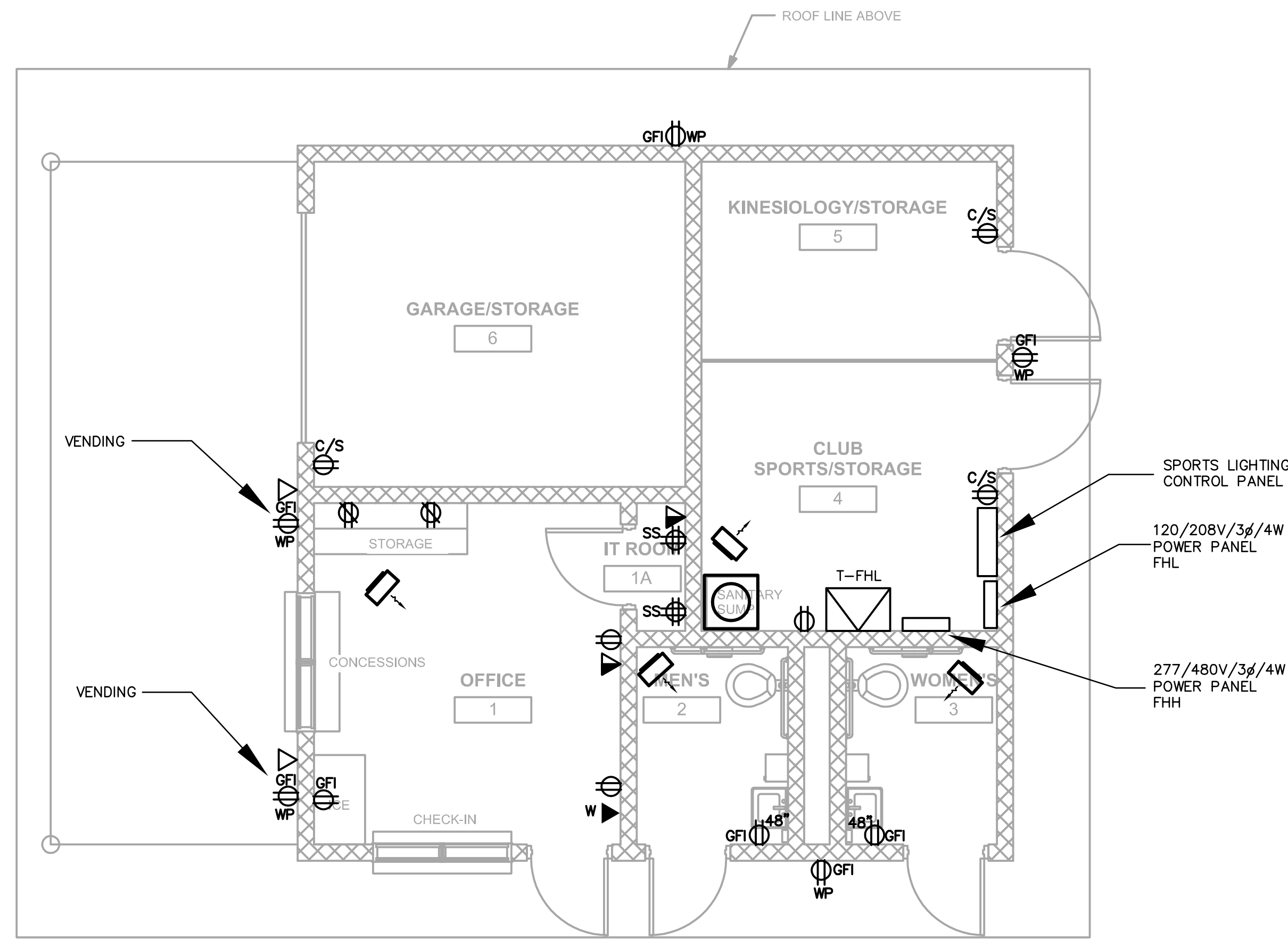


RECREATION FIELD BUILDING—LIGHTING PLAN
SCALE: 1/4" = 1'-0"



RECREATION FIELD BUILDING—POWER/SYSTEMS PLAN
SCALE: 1/4" = 1'-0"

GENERAL NOTES (LIGHTING) :

- REFER TO THE ARCHITECT'S REFLECTED CEILING PLANS FOR EXACT LOCATIONS OF ALL CEILING MOUNTED DEVICES. REFER ALSO TO THE ARCHITECT'S CASEWORK DETAILS AND ROOM ELEVATIONS FOR EXACT LOCATIONS AND MOUNTING HEIGHTS OF LIGHT FIXTURES , ETC.
- ALL WIRING SHALL BE #12 WITH A #12 INSULATED GROUND WIRE IN 3/4" MINIMUM SIZE CONDUIT.
- CONTRACTOR SHALL FOLLOW BRANCH CIRCUITING LAY-OUT, AS INDICATED ON THE FLOOR PLANS, WITH A MAXIMUM OF THREE (3) BRANCH CIRCUITS PER HOMERUN. EACH BRANCH CIRCUIT SHALL BE PROVIDED WITH A DEDICATED NEUTRAL CONDUCTOR. DEDICATED NEUTRAL CONDUCTORS SHALL BE CONSIDERED CURRENT CARRYING. IF ADDITIONAL CONDUCTORS ARE RAN IN THE SAME CONDUIT WITH THOSE INDICATED, CONTRACTOR SHALL DERATE ALL CURRENT CARRYING CONDUCTORS PER N.E.C. #310.15(B)(2), AND UPSIZE CONDUIT AS REQUIRED PER N.E.C. #300.17 AND ANNEX C. MULTIWIRE BRANCH CIRCUITS AS DEFINED IN N.E.C #100 / 210.4 (CIRCUITS SHARING A COMMON NEUTRAL CONDUCTOR) SHALL NOT BE PERMITTED.

Northern Kentucky University - Intramural Field and Support Building

#	Revision Date
1	
2	
3	
4	
5	
6	
7	
8	

Drawing Name:
Owner Project Number:
Project Number: 03667.00
Date: August 2, 2012
Drawn By: A.ROWAN
Checked By: T.HANS

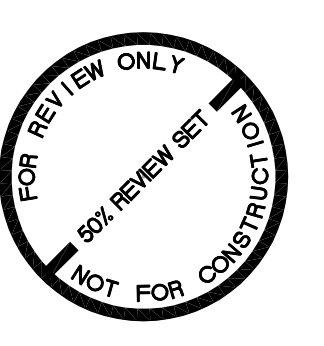


Omni ARCHITECTS
212 North Upper Street
Lexington, Kentucky 40507-1001
p 859.252.6664 f 859.253.2358
www.omniarchitects.com

CANNONDESIGN

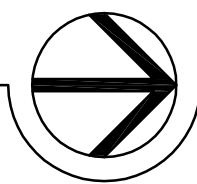


10411 Meeting Street
Prospersville, Kentucky 40382
p 502.326.3000 f 502.326.2881
www.omniengineers.com





ATHLETIC FIELD - LIGHTING PLAN
 SCALE: 1/32" = 1'-0"

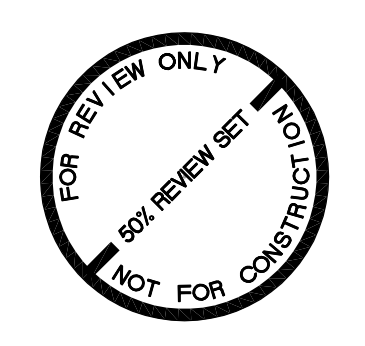


GENERAL NOTES (LIGHTING) :

- REFER TO THE ARCHITECT'S REFLECTED CEILING PLANS FOR EXACT LOCATIONS OF ALL CEILING MOUNTED DEVICES. REFER ALSO TO THE ARCHITECT'S CASEWORK DETAILS AND ROOM ELEVATIONS FOR EXACT LOCATIONS AND MOUNTING HEIGHTS OF LIGHT FIXTURES , ETC.
- ALL WIRING SHALL BE #12 WITH A #12 INSULATED GROUND WIRE IN 3/4" MINIMUM SIZE CONDUIT.
- CONTRACTOR SHALL FOLLOW BRANCH CIRCUITING LAY-OUT, AS INDICATED ON THE FLOOR PLANS, WITH A MAXIMUM OF THREE (3) BRANCH CIRCUITS PER HOMERUN. EACH BRANCH CIRCUIT SHALL BE PROVIDED WITH A DEDICATED NEUTRAL CONDUCTOR. DEDICATED NEUTRAL CONDUCTORS SHALL BE CONSIDERED CURRENT CARRYING. IF ADDITIONAL CONDUCTORS ARE RAN IN THE SAME CONDUIT WITH THOSE INDICATED, CONTRACTOR SHALL DERATE ALL CURRENT CARRYING CONDUCTORS PER N.E.C. #310.15(B)(2), AND UPSIZE CONDUIT AS REQUIRED PER N.E.C. #300.17 AND ANNEX C. MULTIWIRE BRANCH CIRCUITS AS DEFINED IN N.E.C #100 / 210.4 (CIRCUITS SHARING A COMMON NEUTRAL CONDUCTOR) SHALL NOT BE PERMITTED.

TAG NOTES:

1. SPORTS LIGHTING: MOUNTING HEIGHT 60'
2. SPORTS LIGHTING: MOUNTING HEIGHT 70'
3. UTILITY EASEMENT 15' ON EACH SIDE OF OVERHEAD ELECTRICAL POWER LINE.



10411 Meeting Street
 Lexington, Kentucky 40507
 p 502.252.3300 f 502.252.2881
 www.omniarch.com



Omni ARCHITECTS
 212 North Upper Street
 Lexington, Kentucky 40507-1001
 p 859.252.6664 f 859.253.2358
 www.omniarchitects.com

CANNONDESIGN

NORTHERN KENTUCKY UNIVERSITY



#	Revision Date
1	
2	
3	
4	
5	
6	
7	
8	

Owner Project Number: 03667.00
 Project Number: August 2, 2012
 Date: August 2, 2012
 Drawn By: A.ROWAN
 Checked By: T.HANS

Northern Kentucky University - Intramural Field and Support Building

E0003