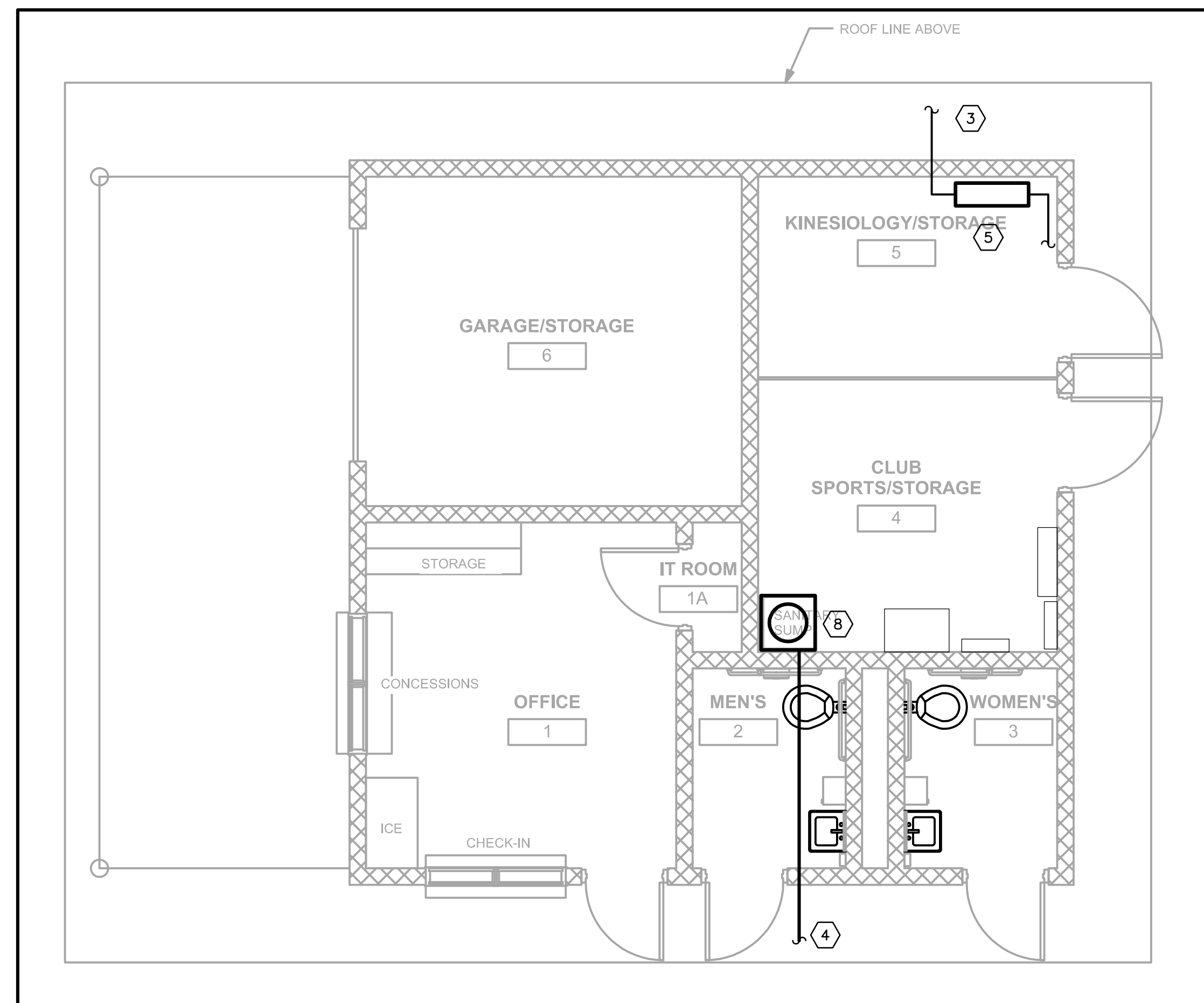




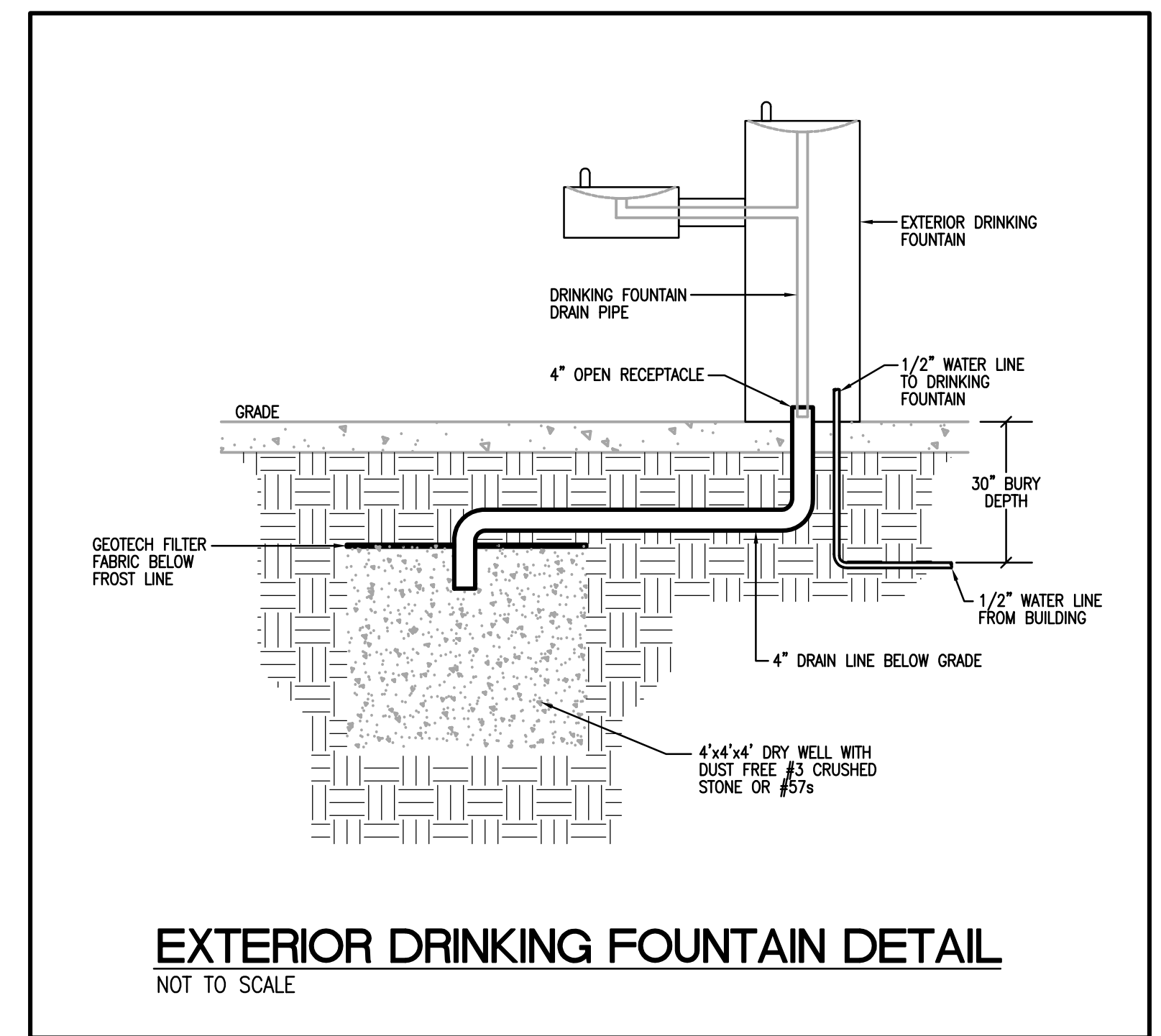
PARITAL ATHLETIC FIELD SITE PLAN
SCALE: 1/32" = 1'-0"

- TAG NOTES:**
- UTILITY EASEMENT 15' ON EACH SIDE OF OVERHEAD ELECTRICAL POWER LINE.
 - REFER TO THE ENLARGED PLAN ON THIS DRAWING FOR WORK IN THIS AREA.
 - 1" DOMESTIC WATER PIPING FROM SITE. REFER TO CIVIL DRAWINGS FOR CONTINUATION.
 - 2" SANITARY FORCE MAIN. REFER TO CIVIL DRAWINGS FOR CONTINUATION.
 - 1" DOMESTIC WATER ENTRY. PROVIDE REDUCED PRESSURE BACKFLOW PREVENTER.
 - ELECTRIC UNIT HEATER.
 - INLINE EXHAUST FAN FOR CONCESSION AND RESTROOM EXHAUST/VENTILATION.
 - SEWAGE EJECTOR PUMP.
 - RECESSED WALL ELECTRIC HEATER.

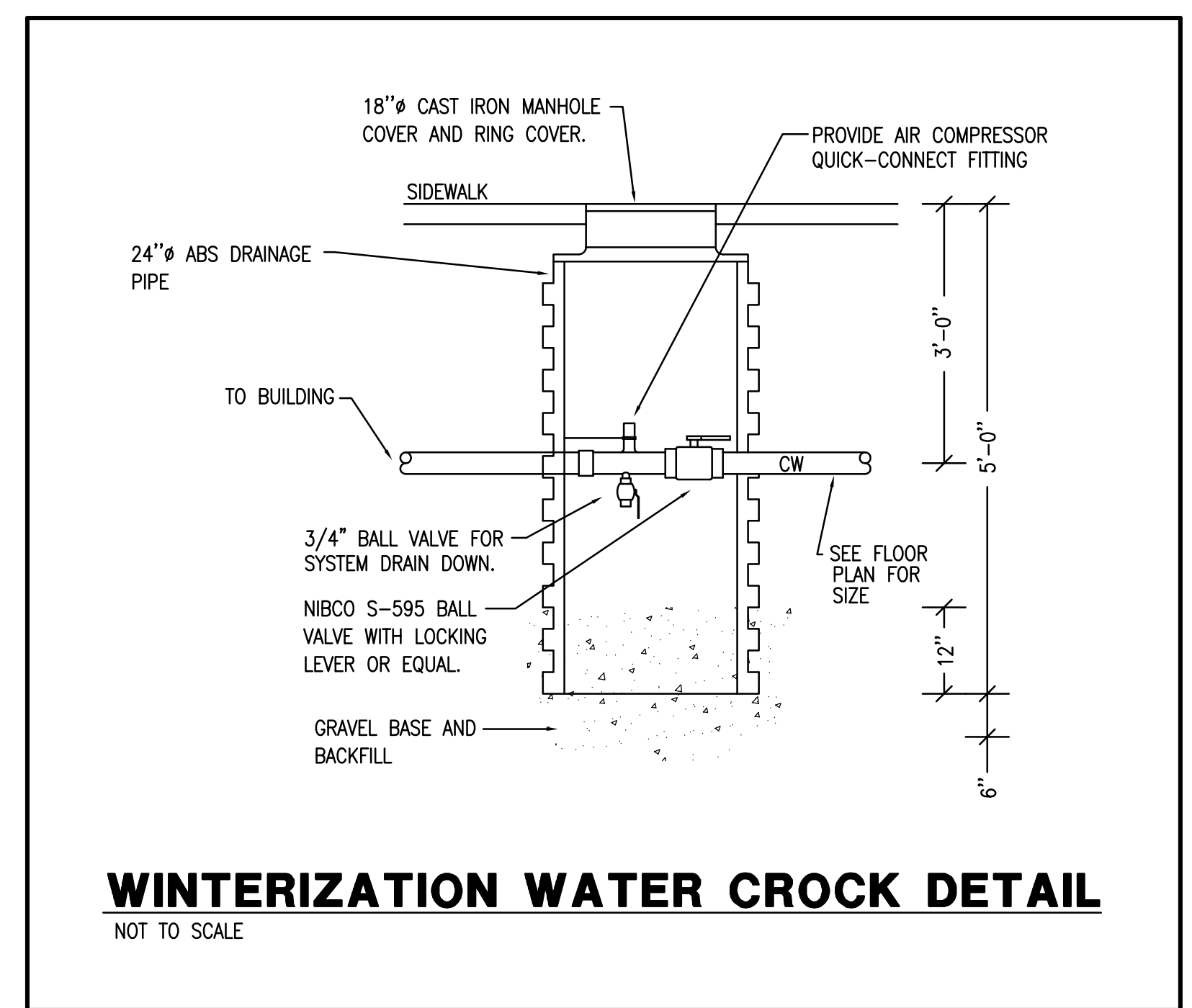
PLUMBING LEGEND	
FLOOR DRAIN	FD
HOSE BIBB	HB
FREEZE PROOF WALL HYDRANT	FPWH
VENT THRU ROOF	VTR
WATER HAMMER ARRESTOR	WHA
WATER HEATER	WH
CLEANOUT	CO
EXTERIOR CLEANOUT	ECO
NEUTRALIZATION TANK	NT
SEDIMENT INTERCEPTOR	SI
GREASE TRAP	GT
TRAP PRIMER	TP
SUMP PUMP	SP
TYPICAL	TYP
NOT TO SCALE	NTS
CAST IRON	CI
POLYVINYL CHLORIDE PIPE	PVC
ABOVE FINISHED FLOOR	AFF
SANITARY PIPING	SAN
DEDICATED GREASE WASTE PIPING	GL
SANITARY VENT PIPING	V
DOMESTIC COLD WATER PIPING	CW
DOMESTIC HOT WATER PIPING	HW
DOMESTIC HOT WATER RETURN PIPING	HW-R
RELIEF VALVE DISCHARGE PIPING	RVD
UNION	U
GATE VALVE	G
THERMOMETER	T
PRESSURE GAUGE	P
PIPING ELBOW (TURNED UP/DOWN)	E
PIPE TEE (TURNED UP/DOWN)	T
BALL VALVE	B
BALL VALVE IN THE RISE	B-R
CHECK VALVE	C
SAFETY OR RELIEF VALVE	S
REDUCED PRESSURE BACKFLOW PREVENTER	RBP



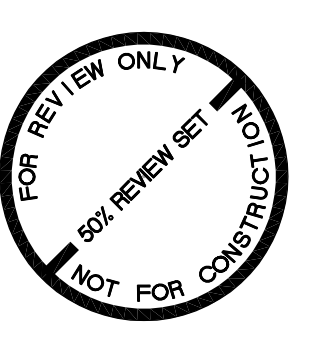
ATHLETIC BUILDING PLAN - PLUMBING
SCALE: 1/4" = 1'-0"



EXTERIOR DRINKING FOUNTAIN DETAIL
NOT TO SCALE



WINTERIZATION WATER CROCK DETAIL
NOT TO SCALE



10411 Meeting Street,
Prospect, Kentucky 40059
p. 502.326.3085 f. 502.326.2691
www.cmbaegs.com



Omni ARCHITECTS
212 North Upper Street
Lexington, Kentucky 40507-1001
p. 859.252.6664 f. 859.253.2358
www.omniarchitects.com

CANNONDESIGN

NORTHERN KENTUCKY UNIVERSITY



Drawing Name:	Athletic Field Site Plan	Revision Date
Owner Project Number:	03667.00	1
Project Number:	August 2, 2012	2
Date:	JEF	3
Drawn By:	JAT	4
Checked By:	JEF	5
		6
		7
		8

Northern Kentucky University - Intramural Field and Support Building

P0101