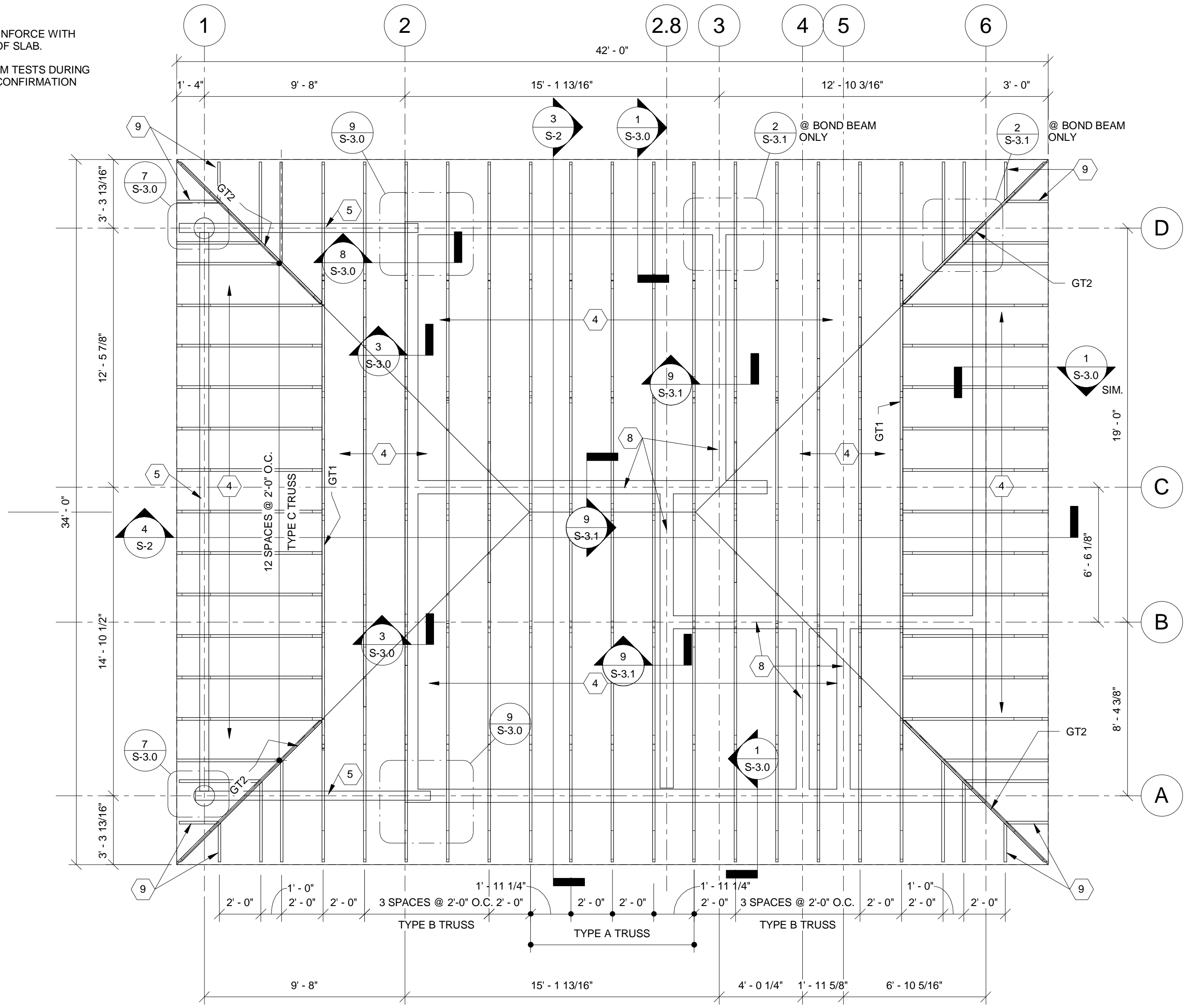
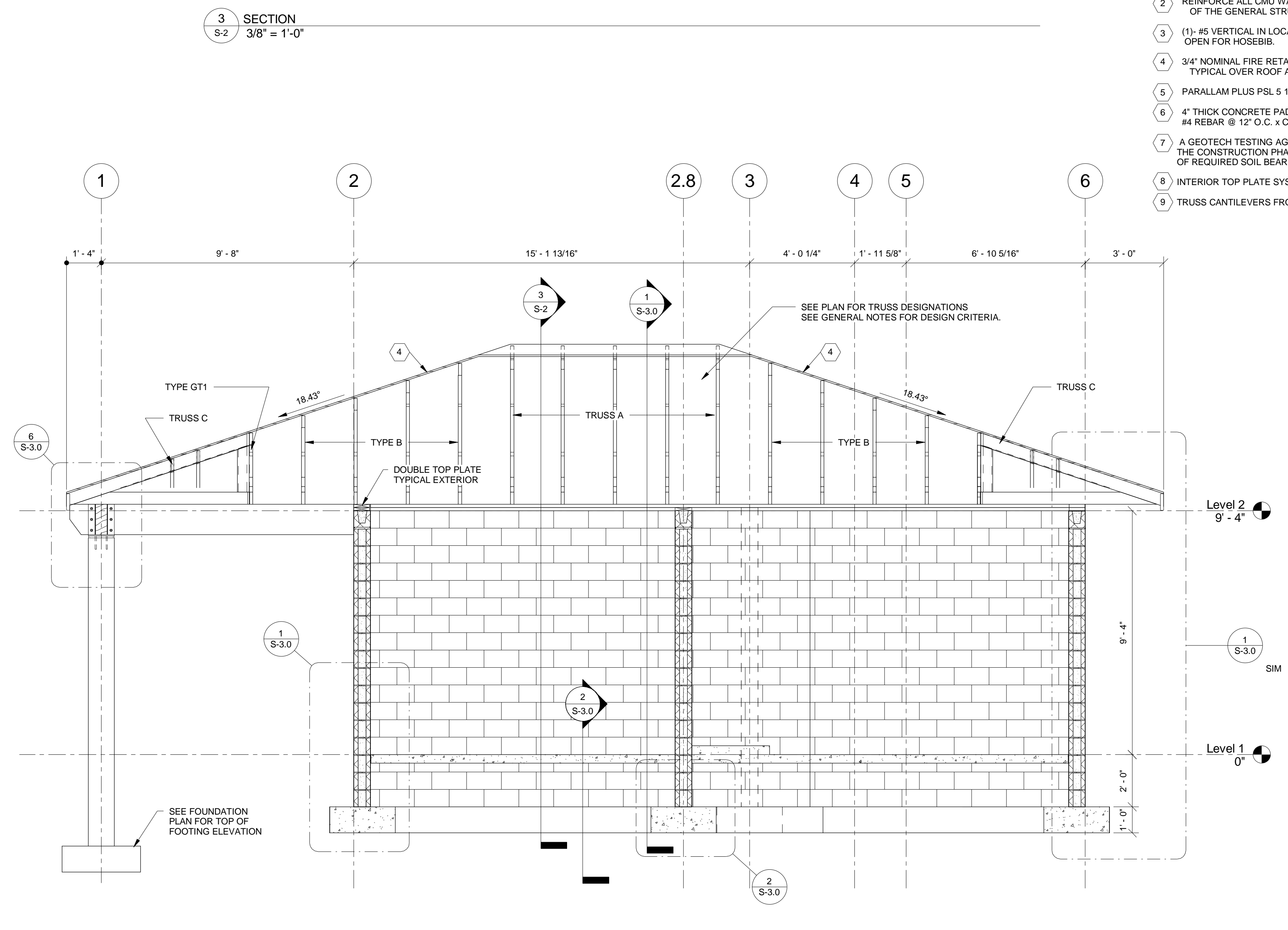


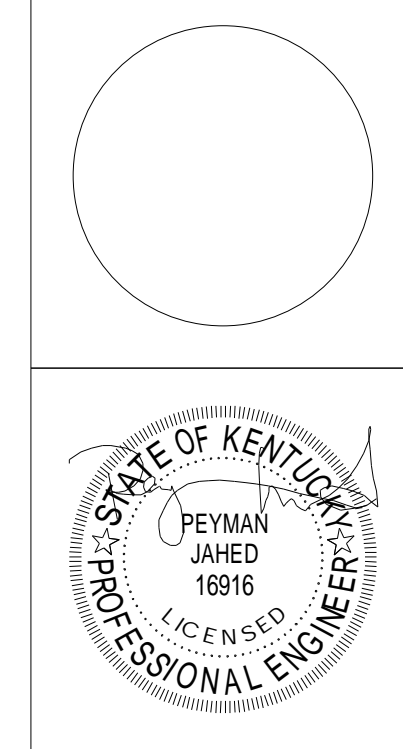
- PLAN NOTES**
- 4" CONCRETE SLAB OVER 10 MIL VAPOR RETARDER ON 6" CRUSHED STONE FILL PER SECTION C.2 & C.3 OF THE GENERAL NOTES ON SHEET S-1 REINFORCING WITH #4 @ 12" O.C. X 12" @ 9" W/W. TYPICAL.
  - REINFORCE ALL CMU WALLS AS CALLED FOR IN SECTION "E" OF THE GENERAL STRUCTURAL NOTES. TYPICAL.
  - (1)-#5 VERTICAL IN LOCATIONS. NOTE LEAVE CELL CLOSEST TO BATHROOM OPEN FOR HOSEBIB.
  - 3/4" NOMINAL FIRE RETARDANT TREATED PLYWOOD SHEATHING. TYPICAL OVER ROOF AREAS.
  - PARALLAM PLUS PSL 5 1/4" x 14" ENGINEERED WOOD BEAM.
  - 4" THICK CONCRETE PAD (SIZE DETERMINED BY OWNER) REINFORCE WITH #4 REBAR @ 12" O.C. X CONTINUOUS EACH WAY IN CENTER OF SLAB.
  - A GEOTECH TESTING AGENCY SHALL MONITOR AND PERFORM TESTS DURING THE CONSTRUCTION PHASE FOR FILLING, EXCAVATION AND CONFIRMATION OF REQUIRED SOIL BEARING FOR FOOTINGS.
  - INTERIOR TOP PLATE SYSTEM SEE SECTION 9/S3.1
  - TRUSS CANTILEVERS FROM TRUSS GT2. TYPICAL.



**2 PLAN DETAIL**  
1/4" = 1'-0"

**4 SECTION**  
3/8" = 1'-0"

# Northern Kentucky University - Intramural Field and Support Building



**bfmj**  
Basil Fryer, M.S., Peyman J. Javed  
Consulting Structural Engineers  
12100 W. 10th Street, Suite 100  
Overland Park, KS 66211  
Tel: 913.241.8800  
Fax: 913.241.8801  
www.bfmj.com

212 North Upper Street  
Lexington, Kentucky 40507-1001  
P 859.252.6664 F 859.253.2358  
www.omniarchitects.com

**Omni**  
ARCHITECTS

**NORTHERN KENTUCKY UNIVERSITY**



PLANS #	Revision #	Revision Date
11107		
8-31-12		
GWW		

Drawing Name: \_\_\_\_\_  
 NKU Project Number: \_\_\_\_\_  
 Project Number: \_\_\_\_\_  
 Date: \_\_\_\_\_  
 Drawn By: \_\_\_\_\_  
 Checked By: JLL

