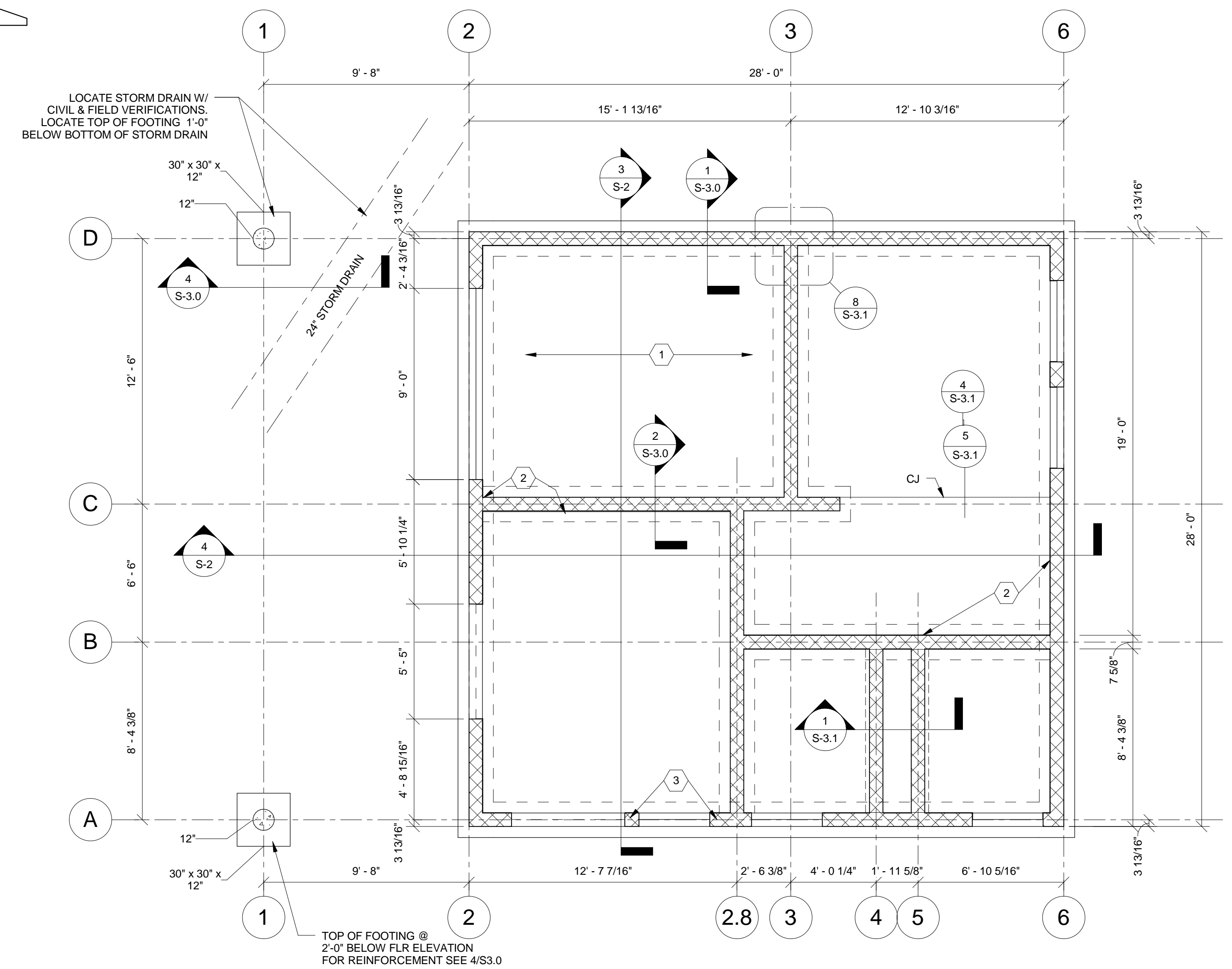
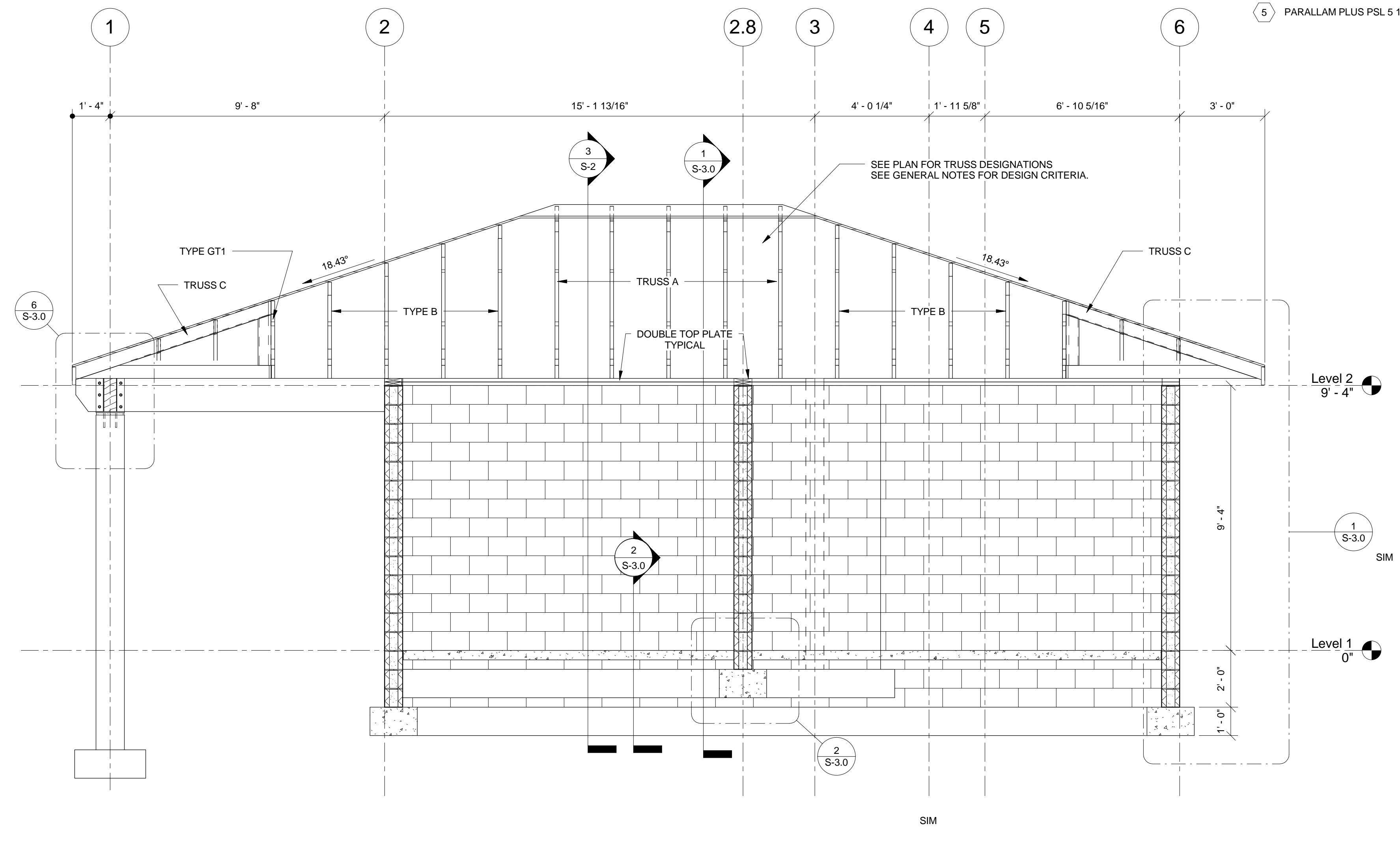


3 SECTION
3/8" = 1'-0"

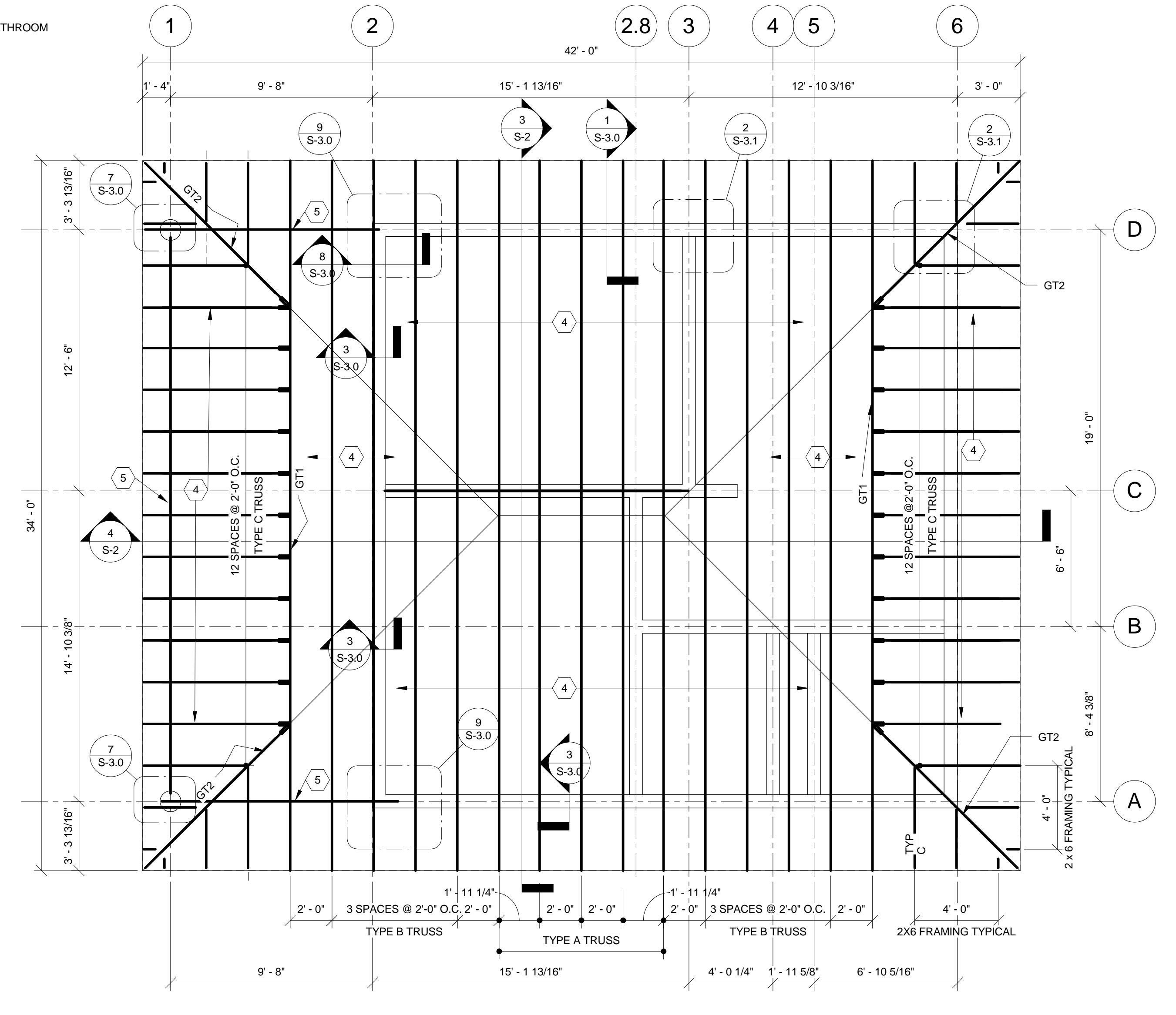


1 PLAN DETAIL
1/4" = 1'-0"
FLOOR & FOUNDATION PLAN

- PLAN NOTES**
- 4" CONCRETE SLAB OVER 10 MIL VAPOR BARRIER ON 6" CRUSHED STONE FILL ON WELL COMPACTED GRADE. REINFORCING WITH 6 X 6-W2.9 X W2.9 WWR. TYPICAL
 - REINFORCE ALL CMU WALLS AS CALLED FOR IN SECTION 'E' OF THE GENERAL STRUCTURAL NOTES. TYPICAL
 - (1)- #5 VERTICAL IN LOCATIONS. NOTE LEAVE CELL CLOSEST TO BATHROOM OPEN FOR HOSEBIB.
 - 3/4" NOMINAL FIRE TETARADANT TREATED PLYWOOD SHEATHING. TYPICAL OVER ROOF AREAS.
 - PARALLAM PLUS PSL 5 1/4" X 14" ENGINEERED WOOD BEAM

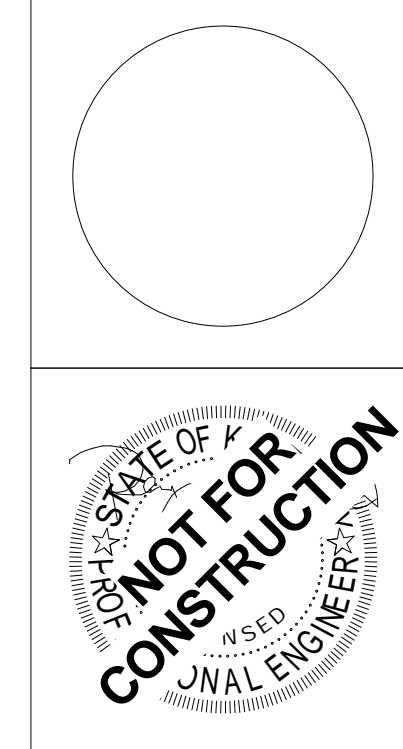


4 SECTION
3/8" = 1'-0"



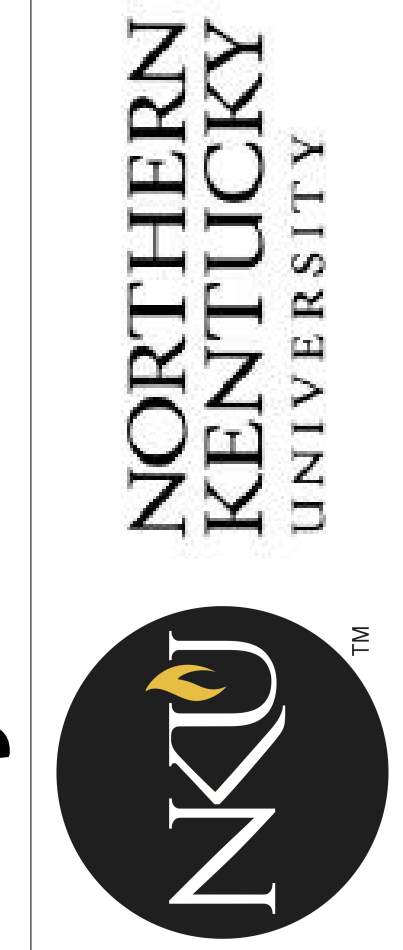
2 PLAN DETAIL
1/4" = 1'-0"
ROOF FRAMING PLAN

Northern Kentucky University - Intramural Field and Support Building



100% CD
bfmj
Consulting Structural Engineers
212 North Upper Street
Lexington, Kentucky 40507-1001
p 859.252.6664 f 859.253.2358
www.omniarchitects.com

Omni ARCHITECTS
212 North Upper Street
Lexington, Kentucky 40507-1001
p 859.252.6664 f 859.253.2358
www.omniarchitects.com



PLANS #	Revision #	Revision Date
11107		
8-31-12		
GWW		

Checked By: JLL

S-2