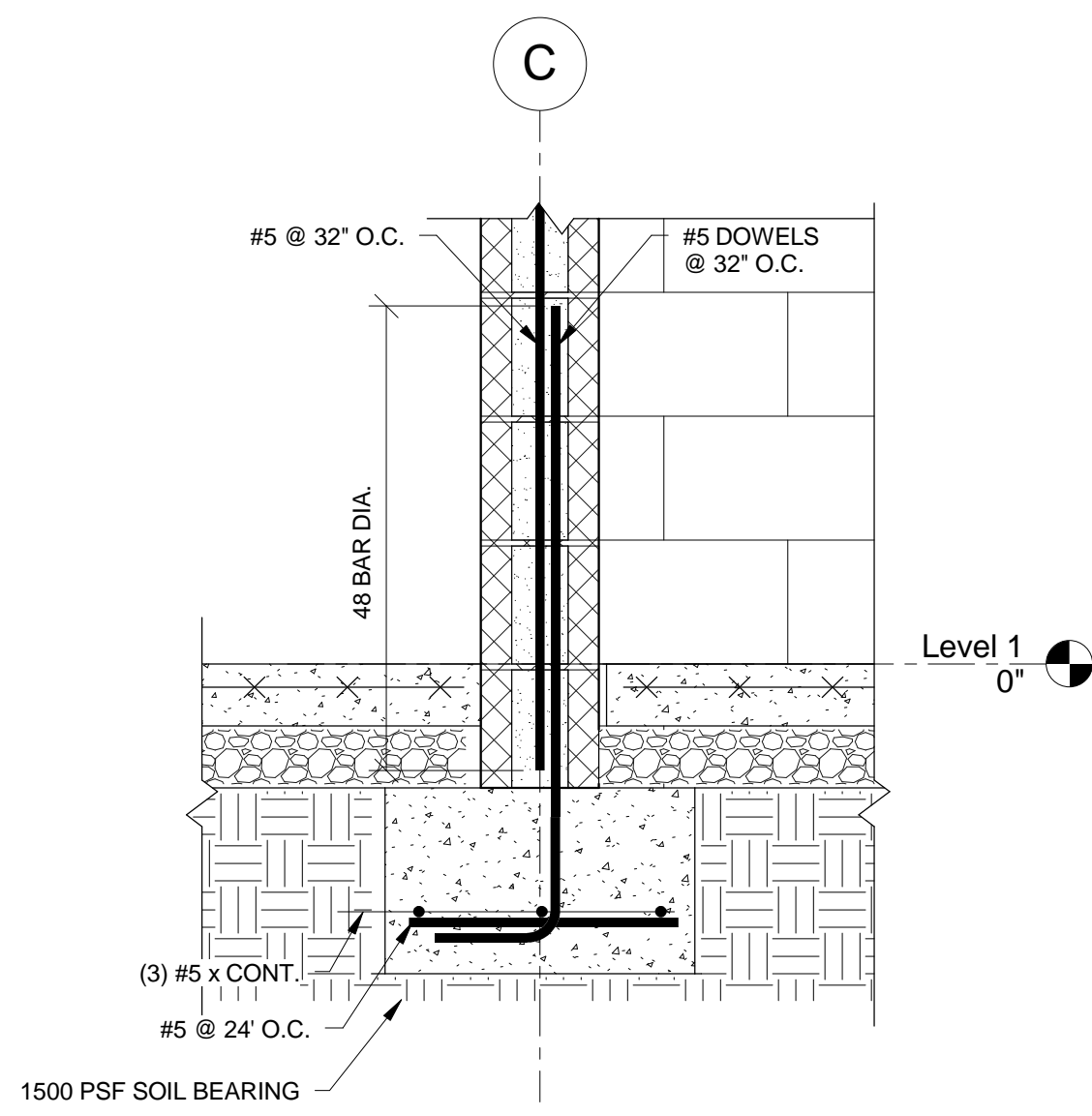
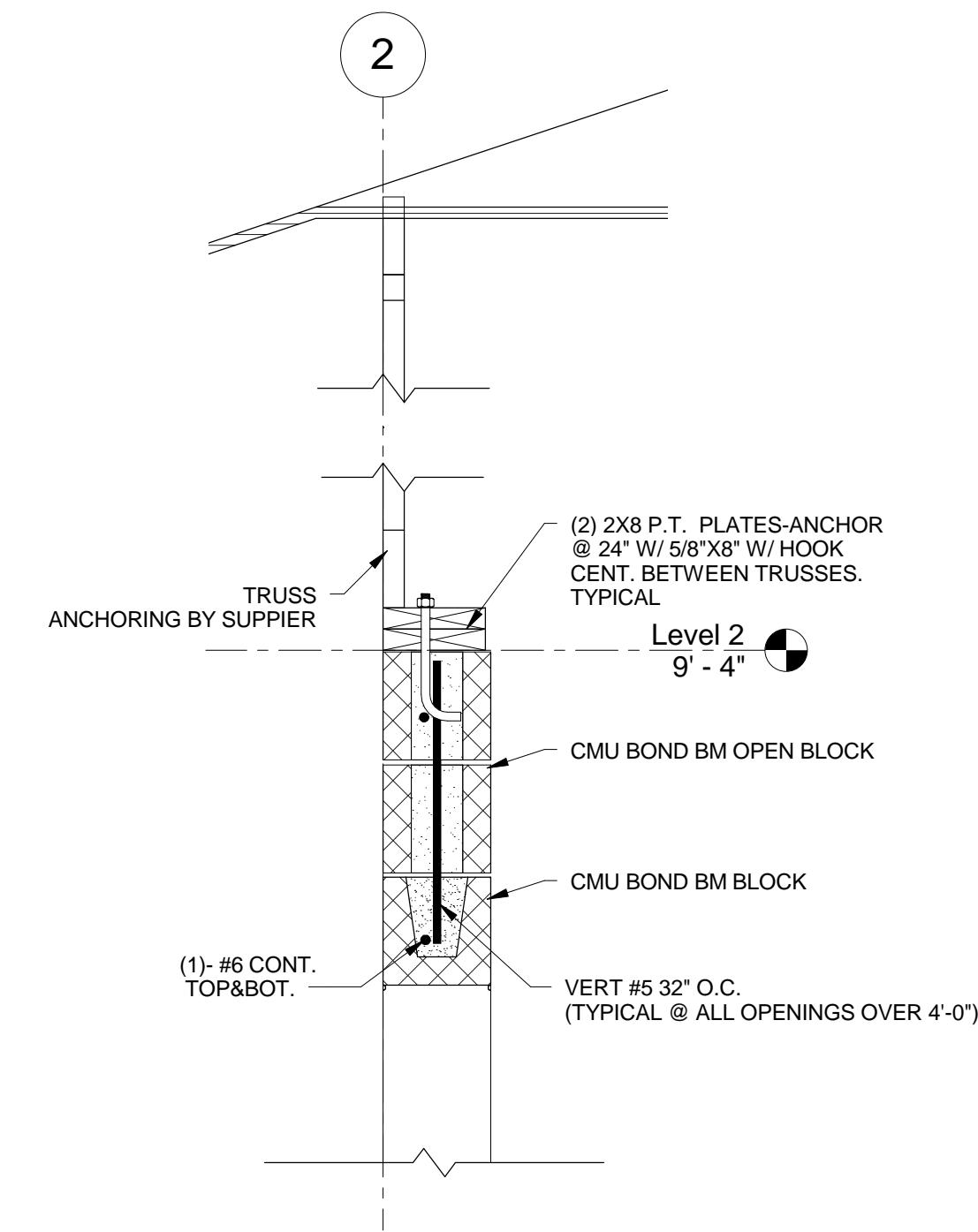


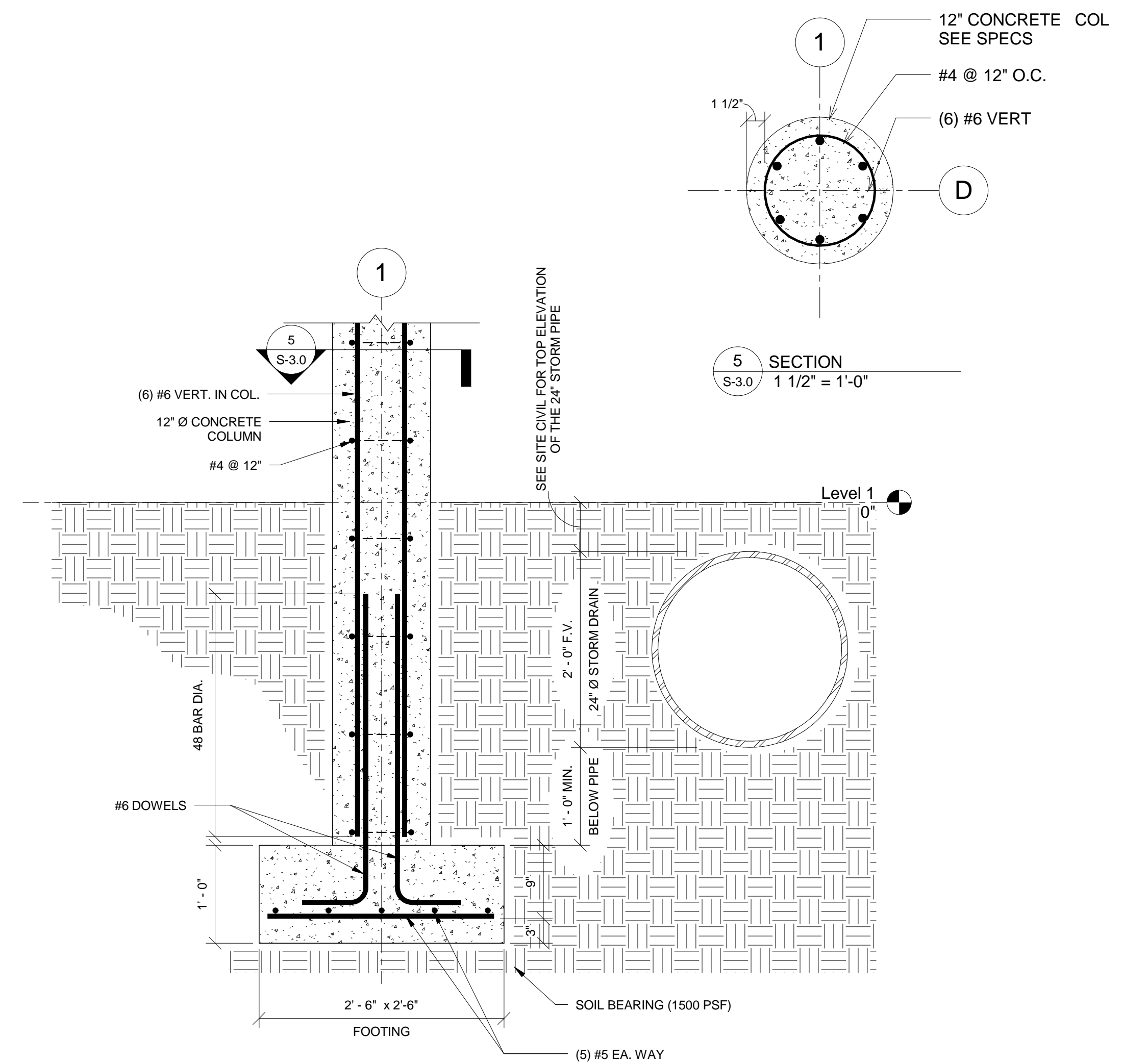
1 SECTION
S-3.0 1" = 1'-0"



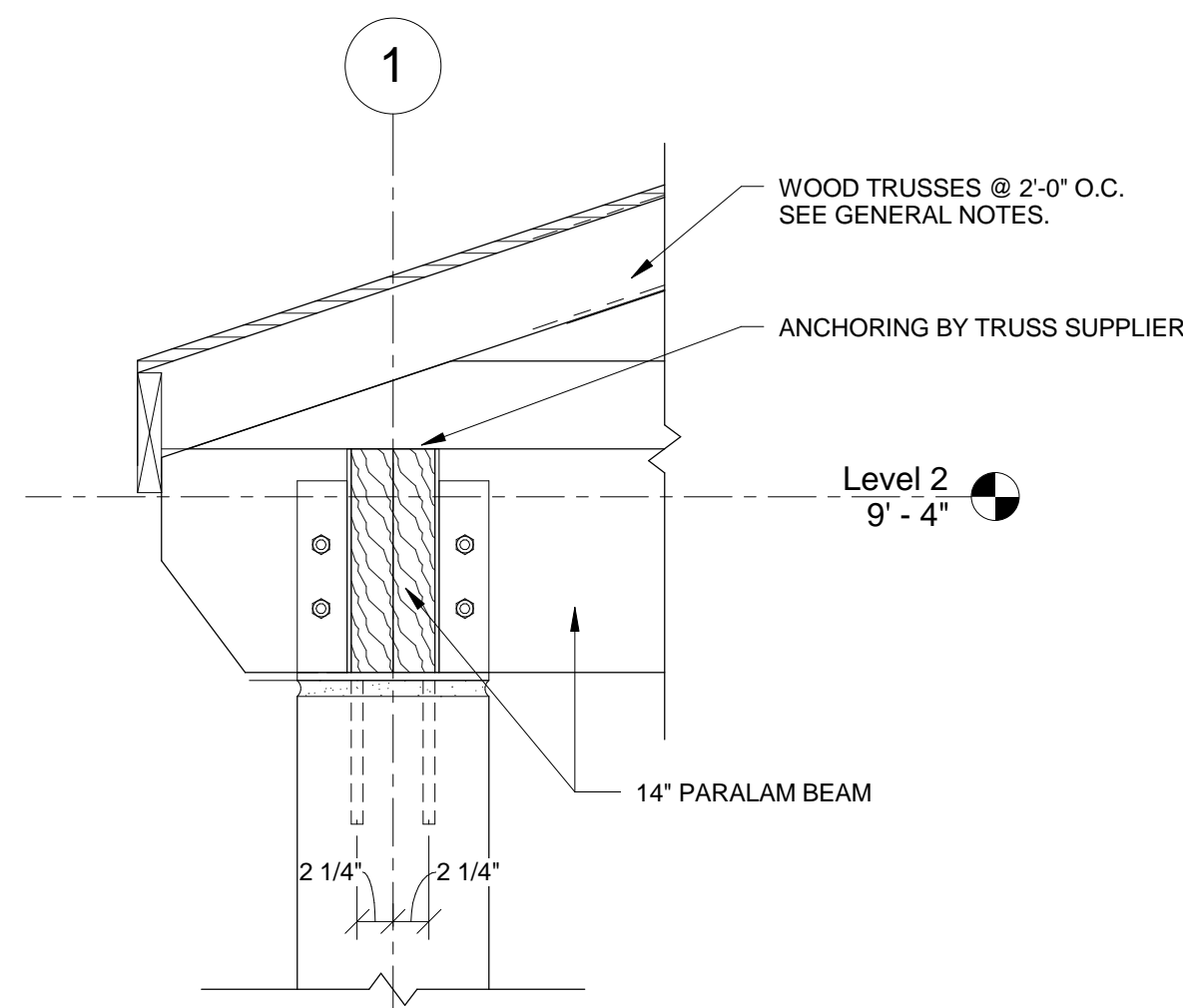
2 SECTION
S-3.0 1" = 1'-0"



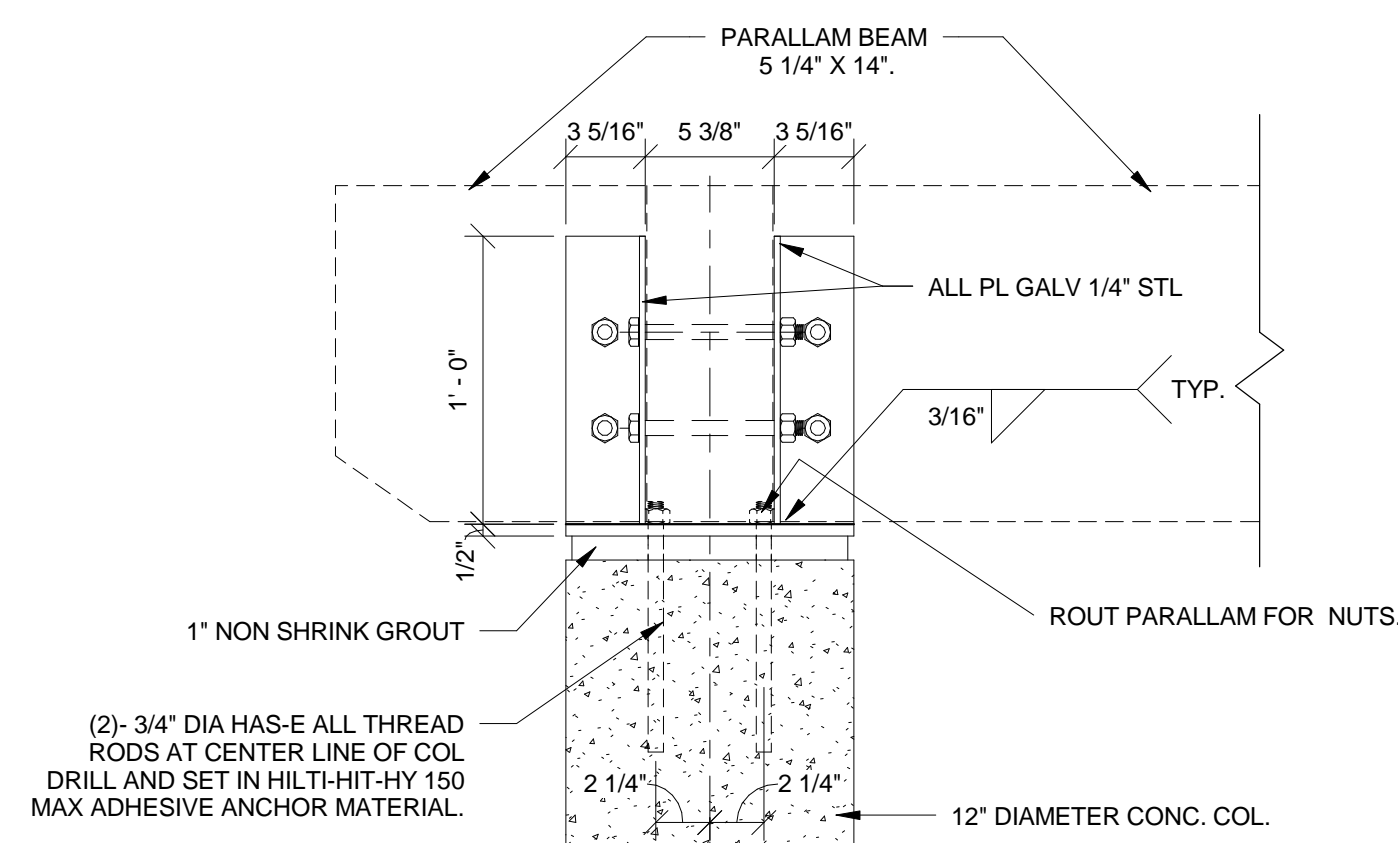
3 SECTION
S-3.0 1" = 1'-0"



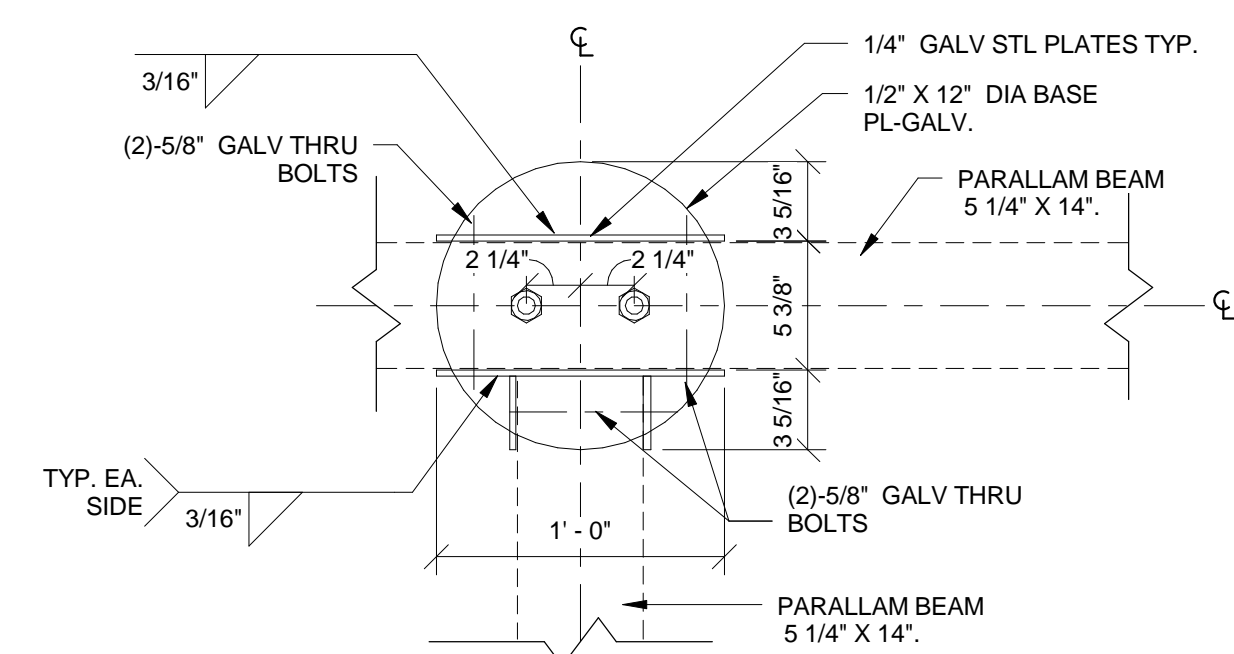
4 SECTION
S-3.0 1" = 1'-0"



6 SECTION
S-3.0 1" = 1'-0"

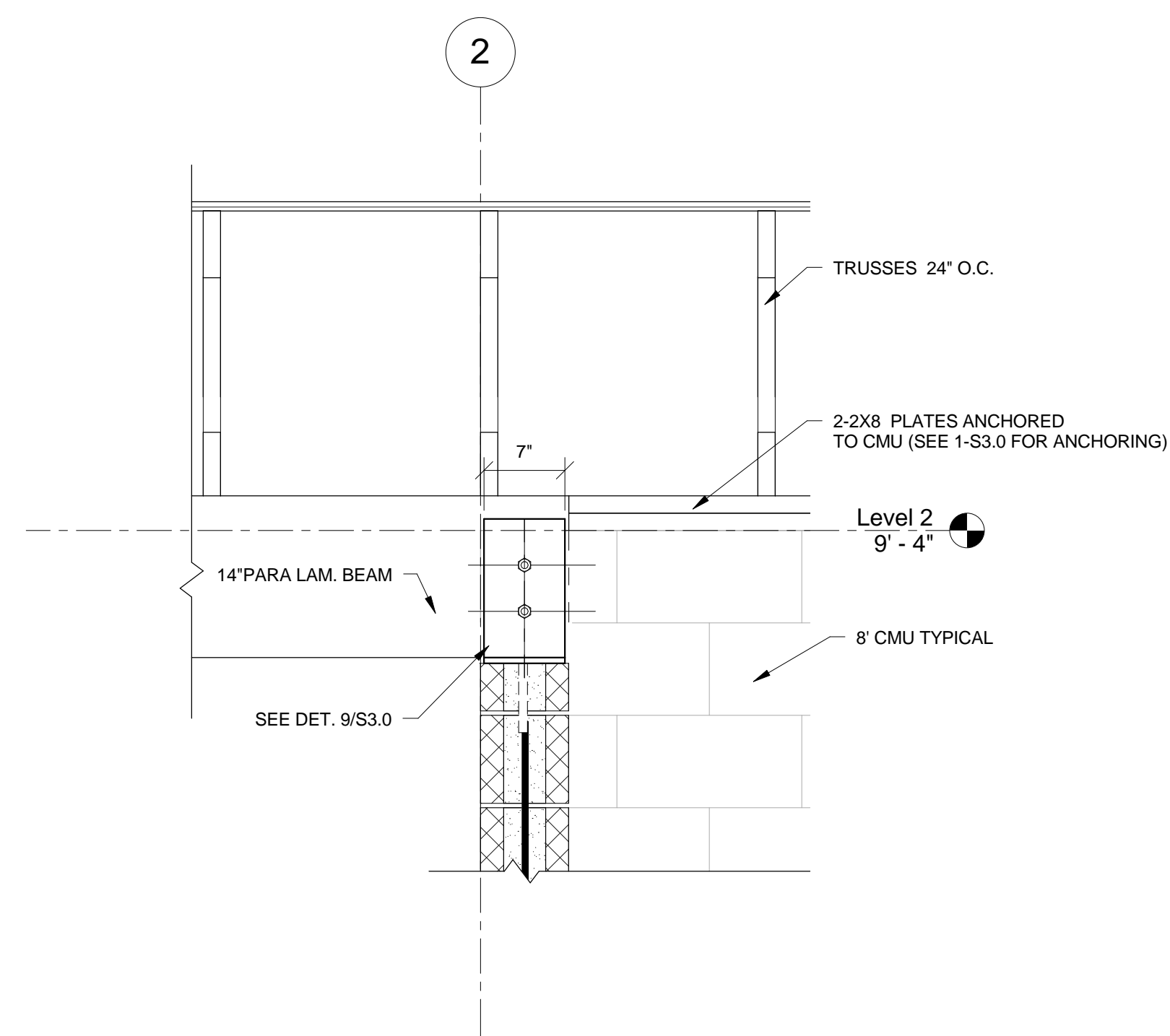


ELEVATION
BEAM SADDLE-1

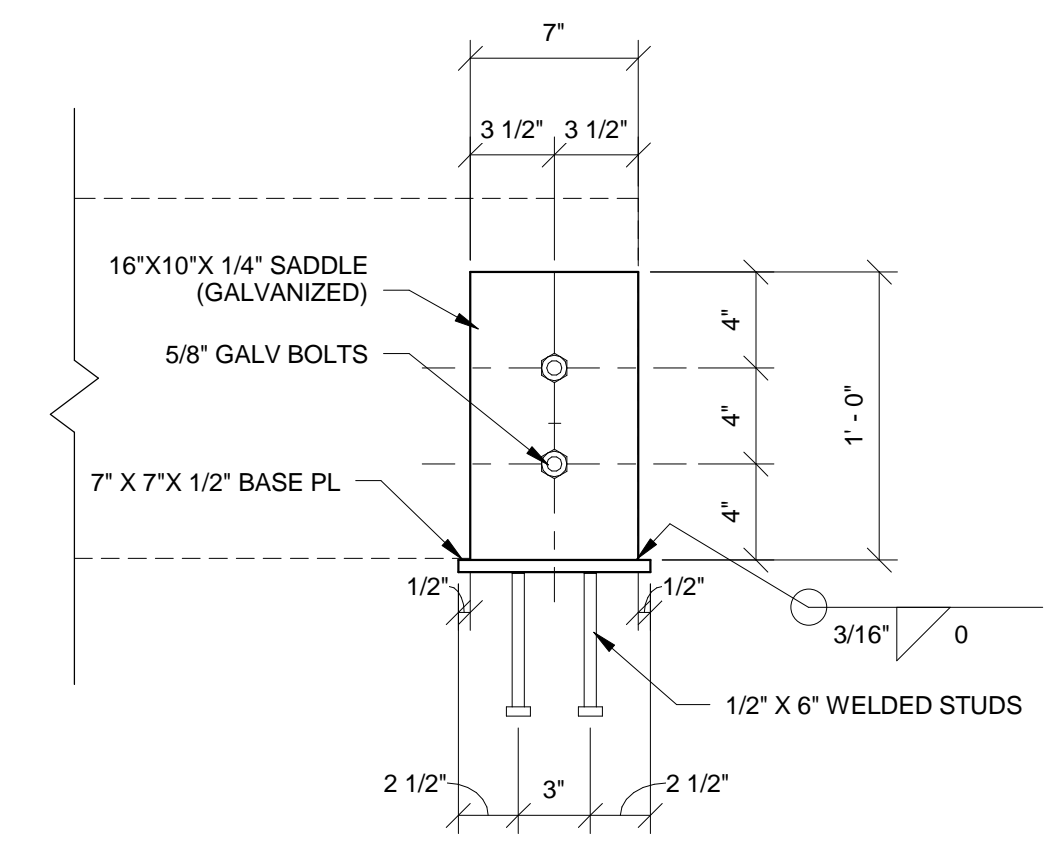


PLAN
BEAM SADDLE-1

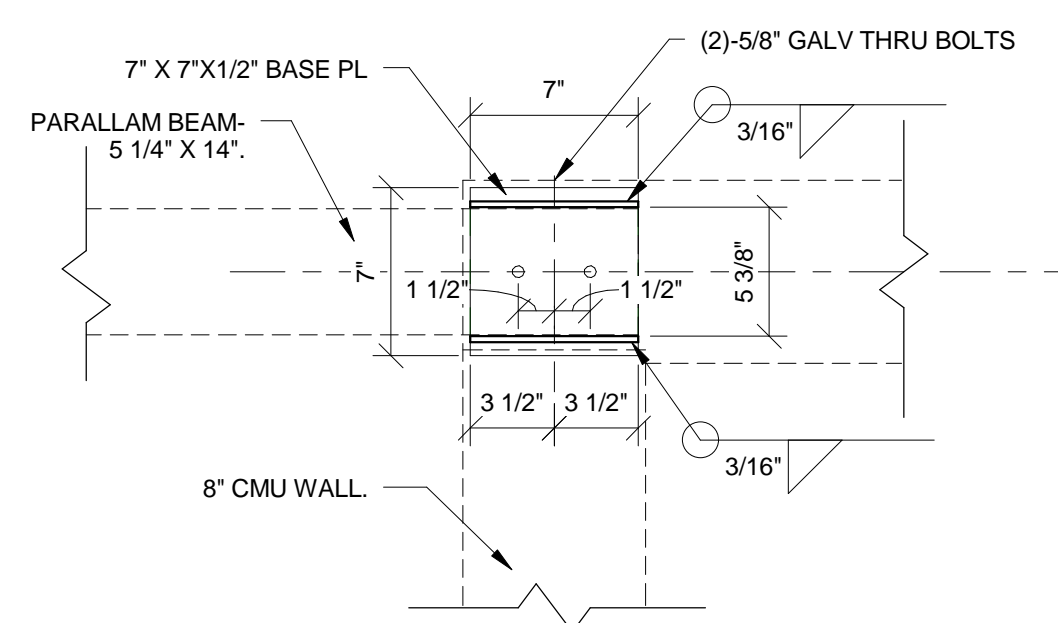
7 SECTION
S-3.0 1 1/2" = 1'-0"



8 SECTION
S-3.0 1" = 1'-0"



ELEVATION
BEAM SADDLE



PLAN VIEW
BEAM SADDLE

9 SECTION
S-3.0 1 1/2" = 1'-0"

Northern Kentucky University - Intramural Field and Support Building

Drawing Name:
NKU Project Number:
Project Number:
Date:
Drawn By:

DETAILS #
11107
8-31-12
GWW

Revision Date



NORTHERN
KENTUCKY
UNIVERSITY

Omni
ARCHITECTS

212 North Upper Street
Lexington, Kentucky 40507-1001
p 859.252.6664 f 859.253.2358
www.omniarchitects.com

CANNONDESIGN

bfmj
Consulting Structural Engineers

100% CD

