

PARITAL ATHLETIC FIELD SITE PLAN
SCALE: 1" = 30'-0"

- TAG NOTES:
- FURNISH AND INSTALL A FREEZE-PROOF HYDRANT WITH LOCKABLE HANDLE EQUAL TO WOODFORD MODEL 134. EXTEND 3/4" WATER LINE BELOW GRADE TO HYDRANT AND CONNECT. ALL EXTERIOR UNDERGROUND PIPING SHALL HAVE TRACER WIRE. COORDINATE EXACT LOCATION WITH OWNER AND MAIN GATE PRIOR TO ROUGH-IN.
 - REFER TO THE ENLARGED PLAN ON DRAWING P0102 FOR WORK IN THIS AREA.

PLUMBING LEGEND	
FLOOR DRAIN	FD
HOSE BIBB	HB
FREEZE PROOF WALL HYDRANT	FPWH
VENT THRU ROOF	VTR
WATER HAMMER ARRESTOR	WHA
WATER HEATER	WH
CLEANOUT	CO
EXTERIOR CLEANOUT	ECO
NEUTRALIZATION TANK	NT
SEDIMENT INTERCEPTOR	SI
GREASE TRAP	GT
TRAP PRIMER	TP
SUMP PUMP	SP
TYPICAL	TYP
NOT TO SCALE	NTS
CAST IRON	CI
POLYVINYL CHLORIDE PIPE	PVC
ABOVE FINISHED FLOOR	AFF
SANITARY PIPING	SAN
SANITARY FORCE MAIN	FM
DEDICATED GREASE WASTE PIPING	GL
SANITARY VENT PIPING	V
DOMESTIC COLD WATER PIPING	CW
DOMESTIC HOT WATER PIPING	HW
DOMESTIC HOT WATER RETURN PIPING	HWR
RELIEF VALVE DISCHARGE PIPING	RVD
UNION	U
GATE VALVE	GV
THERMOMETER	T
PRESSURE GAUGE	PG
PIPING ELBOW (TURNED UP/DOWN)	E
PIPE TEE (TURNED UP/DOWN)	T
BALL VALVE	BV
BALL VALVE IN THE RISE	BV-R
CHECK VALVE	CV
SAFETY OR RELIEF VALVE	SRV
REDUCED PRESSURE BACKFLOW PREVENTER	RBP

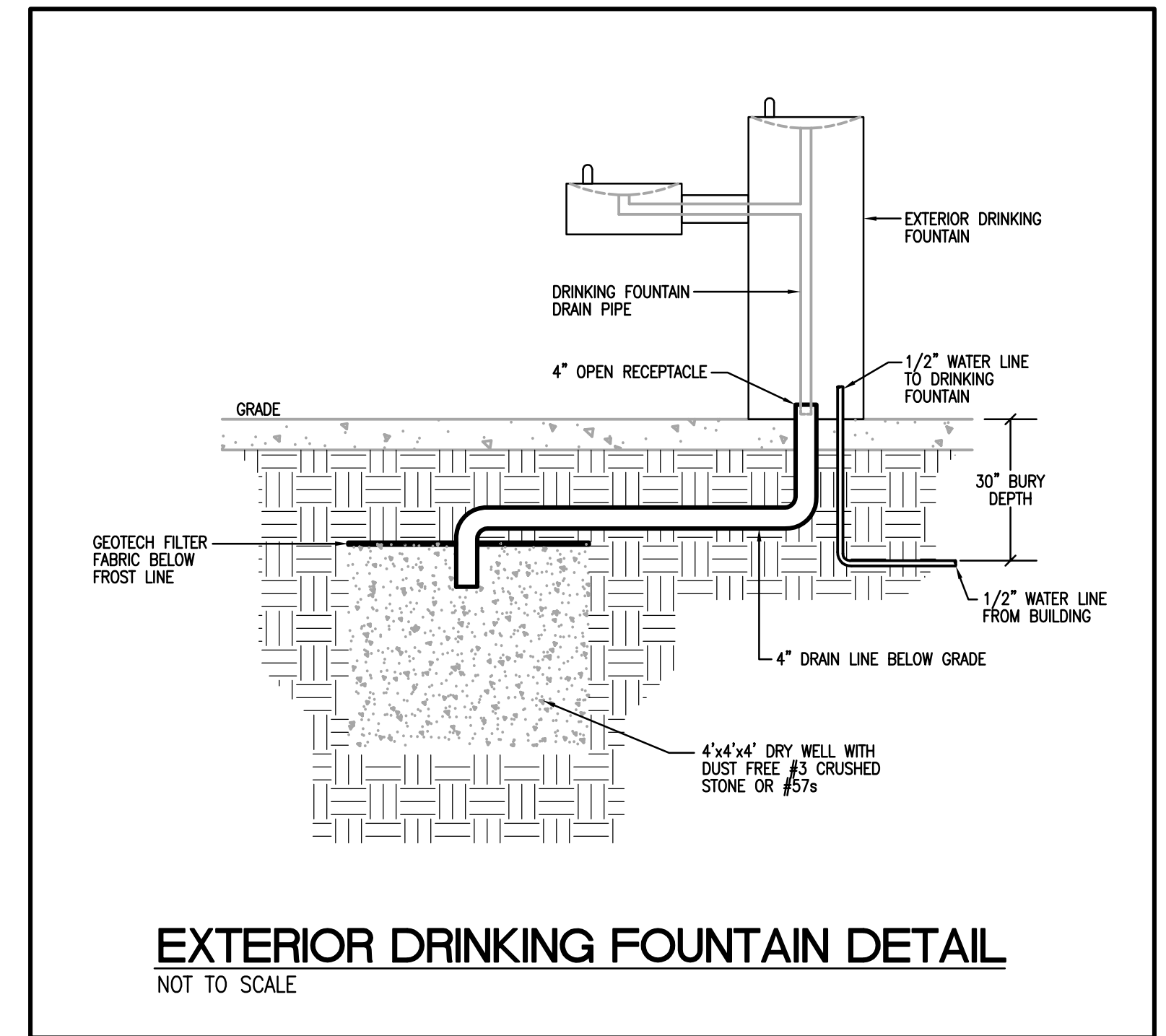
ELECTRIC WATER HEATER

TAG	WH-1
MANUFACTURER	A.O. SMITH
MODEL	DEL-6
HEATING ELEMENTS TOTAL	2.5 KW
NO. OF ELEMENTS	1
V/PHASE/HZ	208/1Ø/60
AMPS	12.0
GALLONS STORAGE	6
GPH @ 100' F RISE	10
ASME RATED	NO
UL LISTED	YES

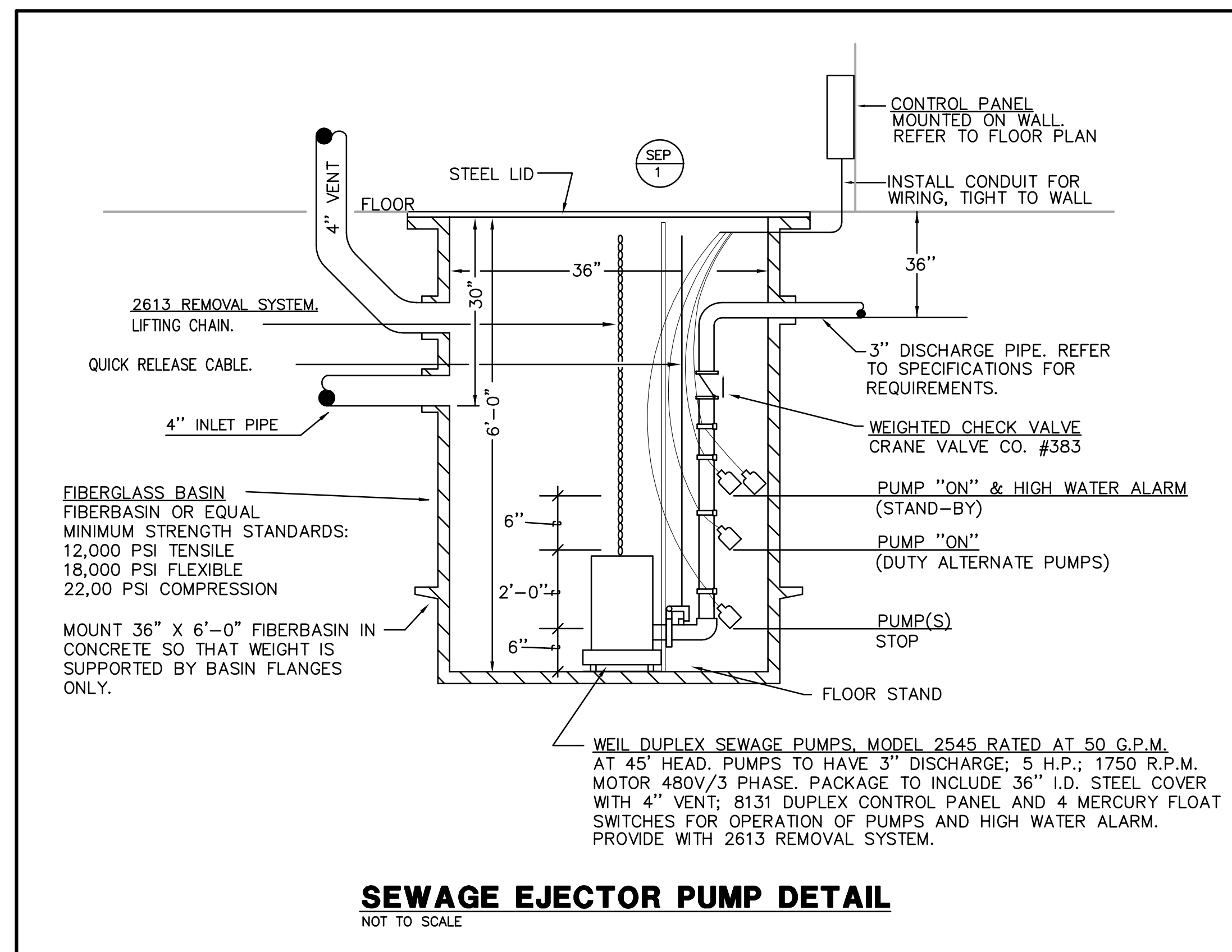
PLUMBING FIXTURE SCHEDULE

DESIGNATOR	FIXTURE	CW	HW	SAN	VENT
P-1	WATER CLOSET, WALL HUNG, ADA, MANUAL FLUSH VALVE	1/4"	---	4"	2"
P-2	LAVATORY, WALL HUNG, ADA, METERING FAUCET	1/2"	1/2"	2"	1 1/2"
P-3	ICE MAKER CONNECTION BOX	1/2"	---	---	---
P-4	EXTERIOR DRINKING FOUNTAIN	1/2"	---	1 1/2"	1 1/2"
P-5	EXTERIOR DRINKING FOUNTAIN, WALL HUNG	1/2"	---	1 1/2"	1 1/2"
HB	HOSS BIBB W/ AIR GAP	1/2"	---	---	---
FPWH	FREEZE PROOF WALL HYDRANT	3/4"	---	---	---
FD-1	FLOOR DRAIN 3" OUTLET W/ TRAP PRIMER	1/2"	---	3"	1 1/2"

- NOTES:
- PIPE SIZES ARE AS INDICATED UNLESS OTHERWISE NOTED ON FLOOR PLANS AND RISER DIAGRAMS.
 - MINIMUM 2" SANITARY PIPING UNDERGROUND. PROVIDE ALL REQUIRED PIPING TO FIXTURES INDICATED ON THE FLOOR PLANS, INDICATED WITH A "P" DESIGNATION. PROVIDE PIPING OF SIZE INDICATED IN THIS SCHEDULE.
 - PIPE ALL EQUIPMENT (SUPPLIED BY OTHERS) AS REQUIRED TO OBTAIN A FULL AND OPERATIONAL SYSTEM. PROVIDE BACKFLOW PROTECTION AS/IF REQUIRED BY THE DETAILS AND BY THE KENTUCKY PLUMBING CODE. ALL EQUIPMENT SHALL BE CONNECTED PER THE MANUFACTURER'S REQUIREMENTS. THE PLUMBING CONTRACTOR SHALL ALSO INSTALL ANY DRAIN PIPING CONNECTIONS AND SPILL INDIRECTLY TO EITHER AN OPEN RECEPTACLE OR FLOOR DRAIN. REFER TO ARCHITECTURAL PLANS FOR EXACT PLACEMENT OF ALL EQUIPMENT.



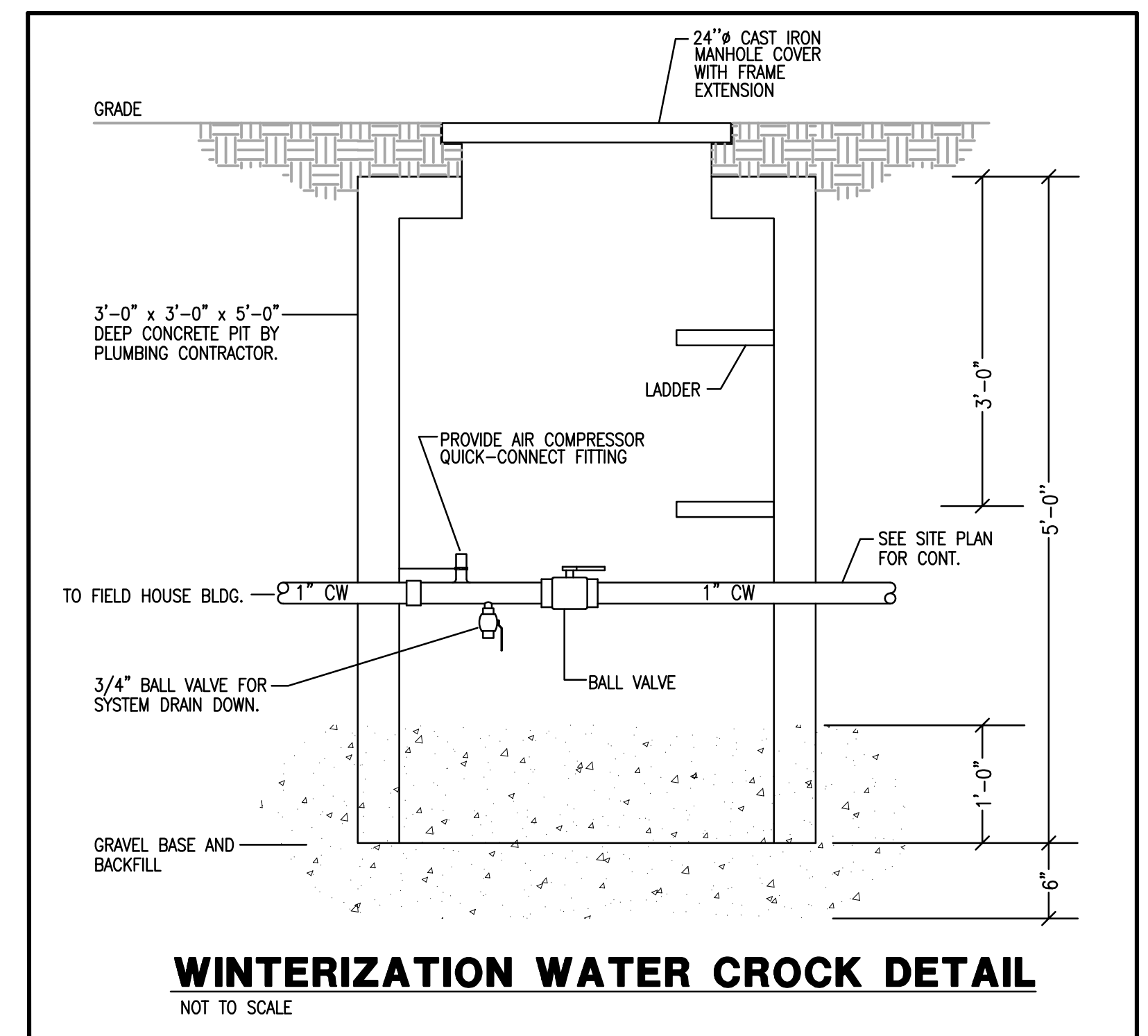
EXTERIOR DRINKING FOUNTAIN DETAIL
NOT TO SCALE



SEWAGE EJECTOR PUMP DETAIL
NOT TO SCALE

EXPANSION TANK	
TAG	ET-1
MANUFACTURER	WATTS
MODEL	DET-12-M1
MAX PRESSURE (PSI)	150
MAX TEMPERATURE	200° F
TANK VOLUME-GAL.	4.5
TANK ACCEPTANCE-GAL.	1.8

PRESSURE TANK	
TAG	PT-1
MANUFACTURER	BELL & GOSSET
MODEL	WTA-401
MAX PRESSURE (PSI)	150
MAX TEMPERATURE	200° F
TANK VOLUME-GAL.	18.0
TANK ACCEPTANCE-GAL.	11.7



WINTERIZATION WATER CROCK DETAIL
NOT TO SCALE

Northern Kentucky University - Intramural Field and Support Building

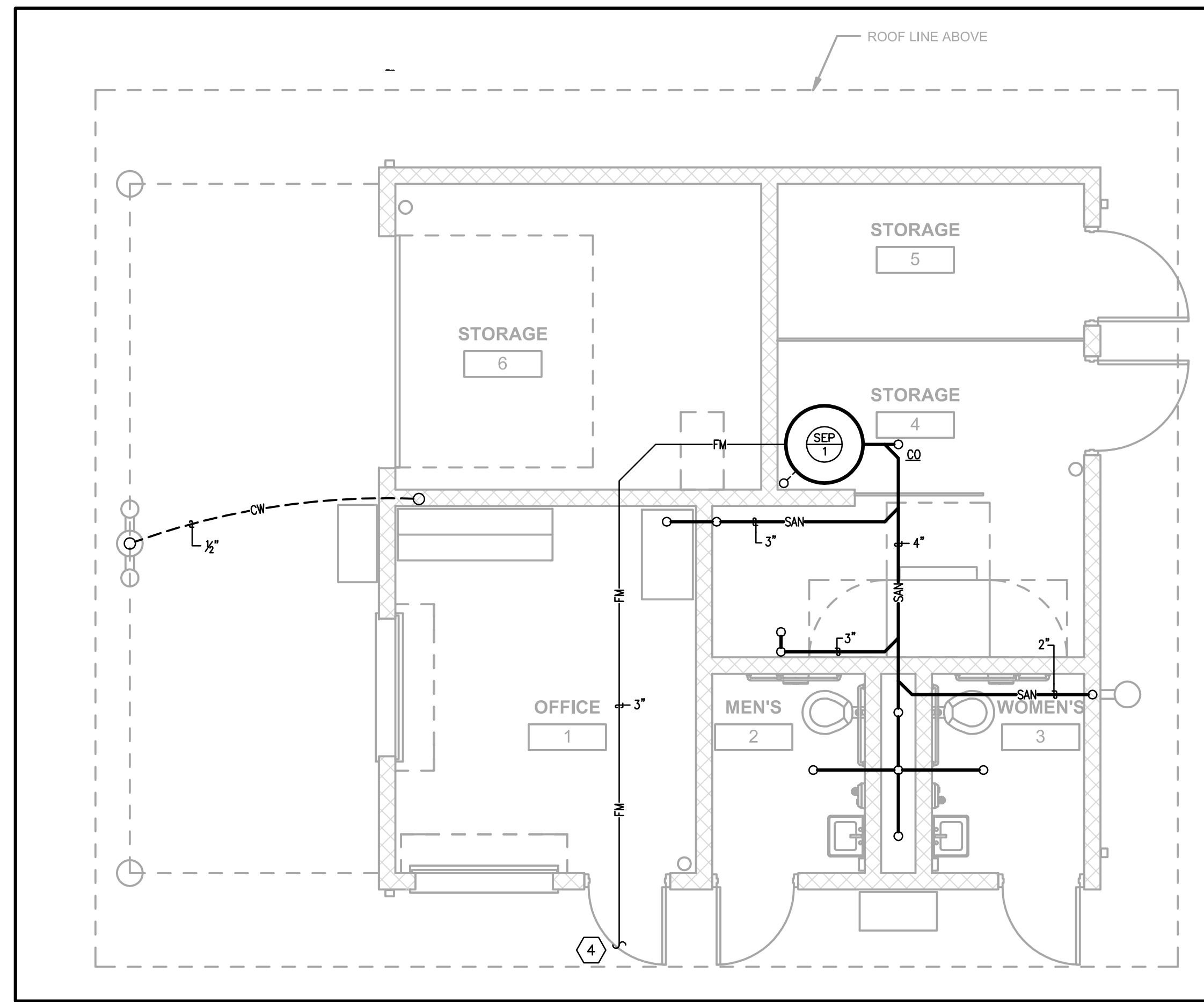
JESS EDWARDS
FARMER
1775
1800
1850
1900
1950
2000

212 North Upper Street
Lexington, Kentucky 40507-1001
p 859.252.6664 f 859.253.2358
www.omniarchitects.com

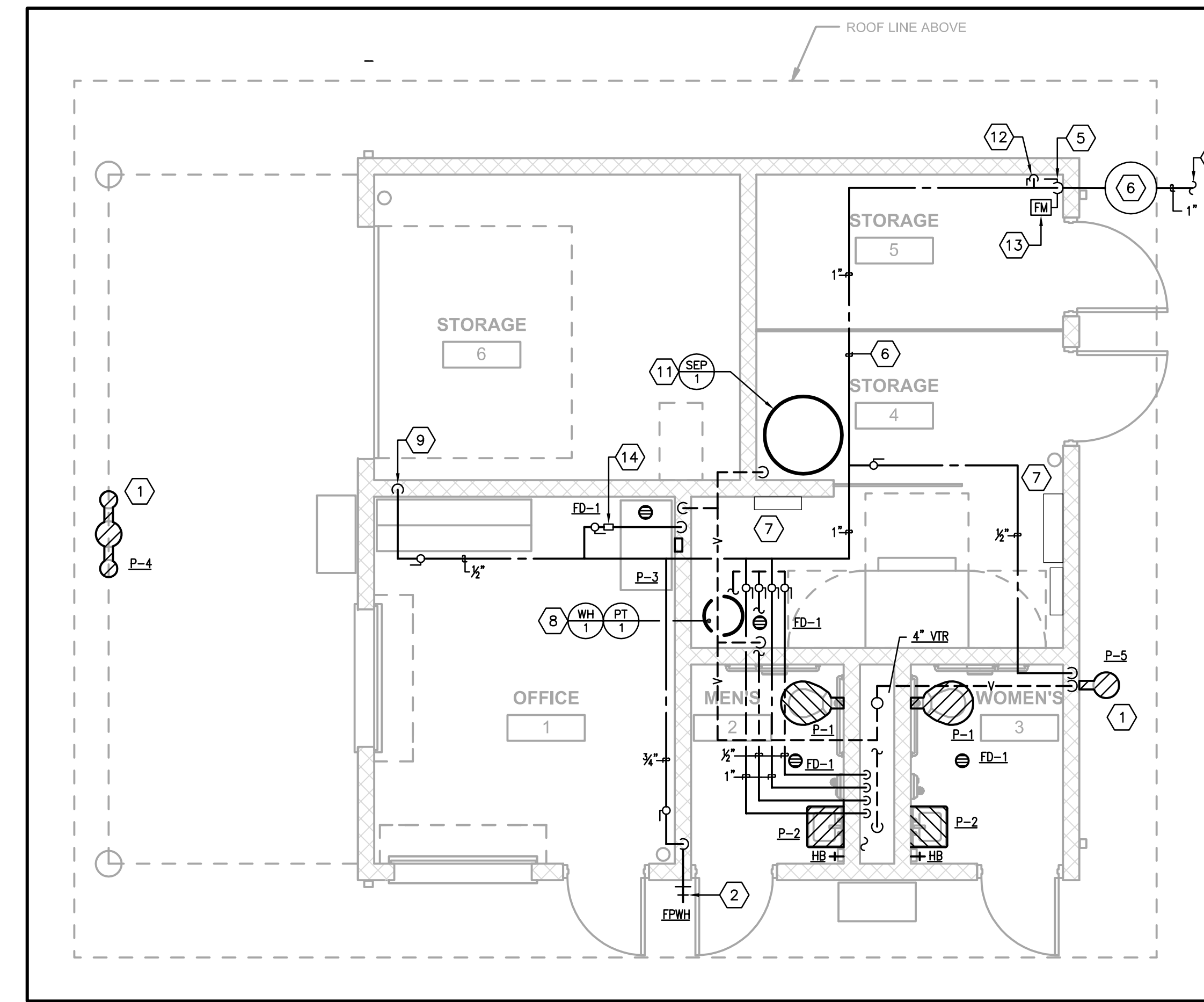
NORTHERN KENTUCKY UNIVERSITY

NKU

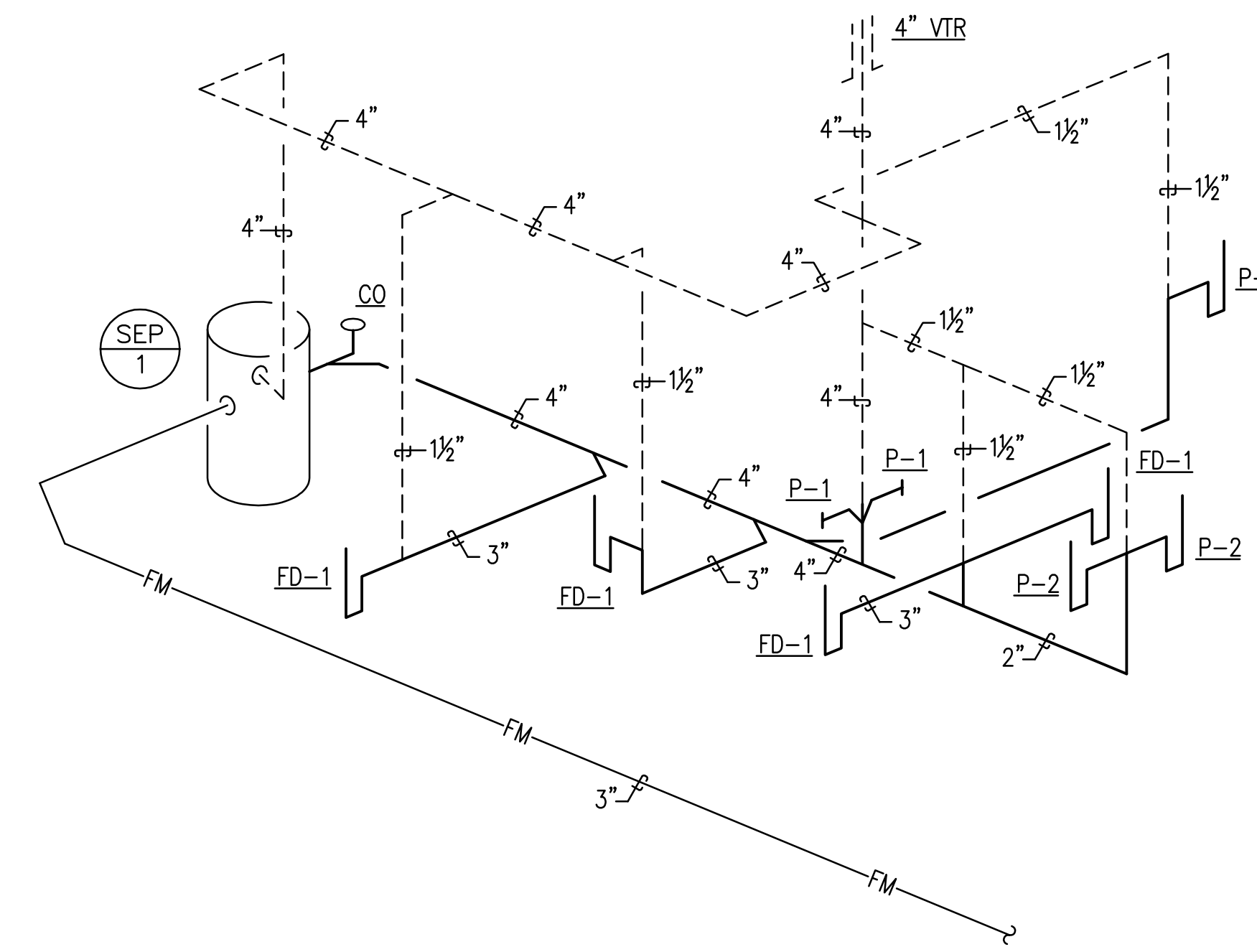
Drawing Name:	Athletic Field Site Plan - Plumbing	Revision Date
Owner Project Number:	03667.00	1
Project Number:	August 31, 2012	2
Date:	JEF	3
Drawn By:	JAT	4
Checked By:	JEF	5
		6
		7
		8



ATHLETIC BUILDING PLAN - UNDERSLAB PLUMBING
1/4" = 1'-0"



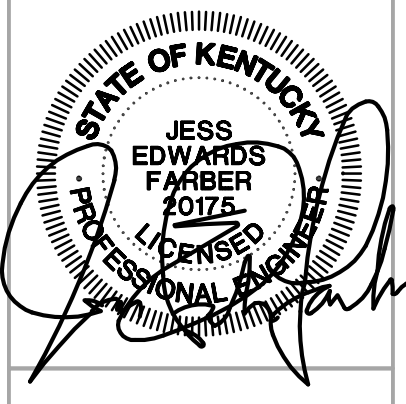
ATHLETIC BUILDING PLAN - PLUMBING
SCALE: 1/4" = 1'-0"



SANITARY WASTE AND VENT RISER DIAGRAM
NOT TO SCALE

- TAG NOTES:
1. REFER TO ARCHITECTURAL DRAWINGS FOR EXACT FOUNTAIN LOCATION.
 2. REFER TO ARCHITECTURAL DRAWINGS FOR EXACT HYDRANT LOCATION.
 3. 1" DOMESTIC WATER PIPING FROM SITE. REFER TO CIVIL DRAWINGS FOR CONTINUATION.
 4. 3" SANITARY FORCE MAIN. REFER TO CIVIL DRAWINGS FOR CONTINUATION.
 5. 1" DOMESTIC WATER ENTRY. PROVIDE FULL SIZE SHUT OFF VALVE AND DOUBLE CHECK VALVE IN THE RISE EQUAL TO WILKINS MODEL 350. PROVIDE DIGITAL FLOW METER AND INTEGRATE TO THE CENTRAL PLANT CONTROLS SYSTEM. COORDINATE WITH THE T.C.C.
 6. ALL PIPING SHALL BE ROUTED BELOW THE CEILING AND IN HEATED SPACES. COORDINATE WITH THE MECHANICAL CONTRACTOR.
 7. ELECTRICAL/IT EQUIPMENT SHOWN FOR COORDINATION. REFER TO ELECTRICAL DRAWINGS FOR MORE INFORMATION.
 8. WATER HEATER AND PRESSURE TANK MOUNTED ON WALL. PROVIDE WALL SHELF FOR MOUNTING TANKS. MAINTAIN ALL REQUIRED CLEARANCES.
 9. ROUTE 1/2" CW PIPE DOWN IN THE WALL TO BELOW SLAB TO THE EXTERIOR DRINKING FOUNTAIN. COORDINATE LOCATION WITH BUILDING FOUNDATIONS.
 10. ROUTE 1" CW AND 1/2" HW TO THE PLUMBING CHASE.
 11. SEWAGE EJECTOR PUMP. REFERENCE DETAIL ON DRAWING P0101 FOR ADDITIONAL INFORMATION.
 12. 3/4" CW LINE DOWN TO BELOW SLAB AND OUT TO SITE. INSTALL BALL VALVE IN THE RISE. REFER TO DRAWING P0101 FOR CONTINUATION.
 13. DOMESTIC WATER FLOW METER CONNECTED TO B.A.S.
 14. FURNISH AND INSTALL DUAL CHECK VALVE ASSEMBLY EQUAL TO WILKINS MODEL 700.

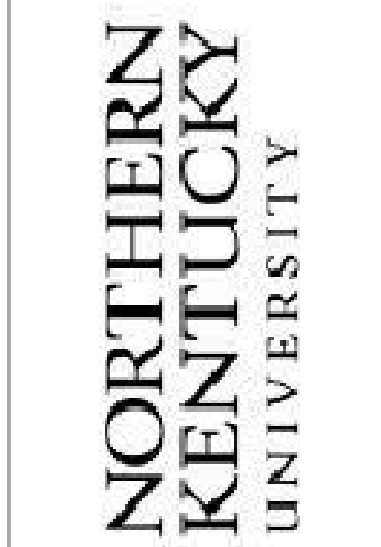
Northern Kentucky University - Intramural Field and Support Building



JESS EDWARDS
REGISTERED PROFESSIONAL ENGINEER
STATE OF KENTUCKY
LICENSE NO. 10725
10411 Meeting Street,
Prospect, Kentucky 40059
p.502.326.3085 f.502.326.2691
www.cmbaegrs.com



212 North Upper Street
Lexington, Kentucky 40507-1001
p.859.252.6664 f.859.253.2358
www.omniarchitects.com



Drawing Name:	Athletic Field - Plumbing	Revision #	Revision Date
Owner Project Number:		1	
Project Number:	05667.00	2	
Date:	August 31, 2012	3	
Drawn By:	JAT	4	
Checked By:	JEF	5	
		6	
		7	
		8	