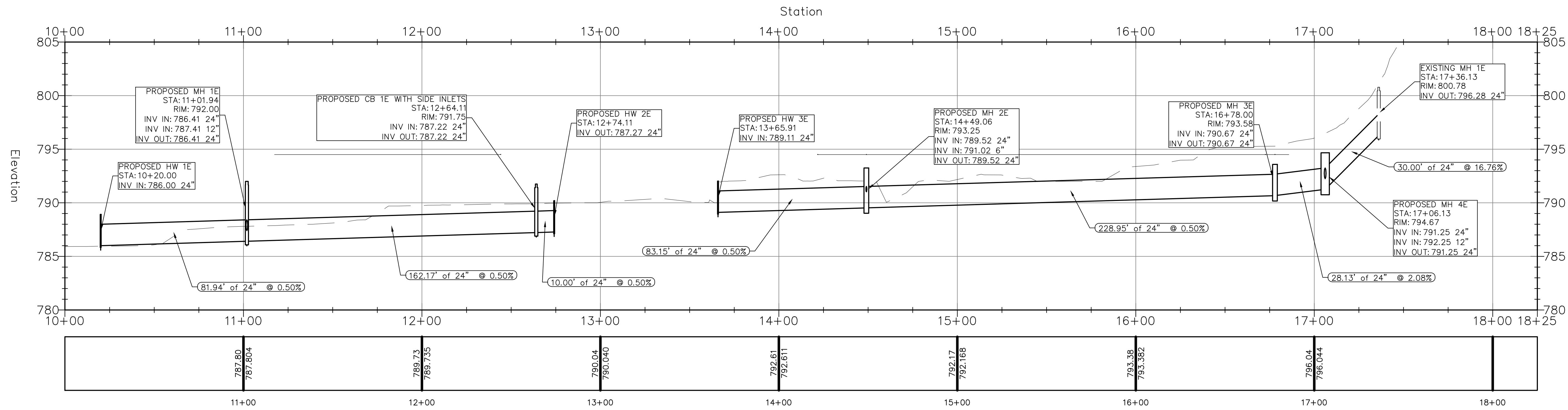
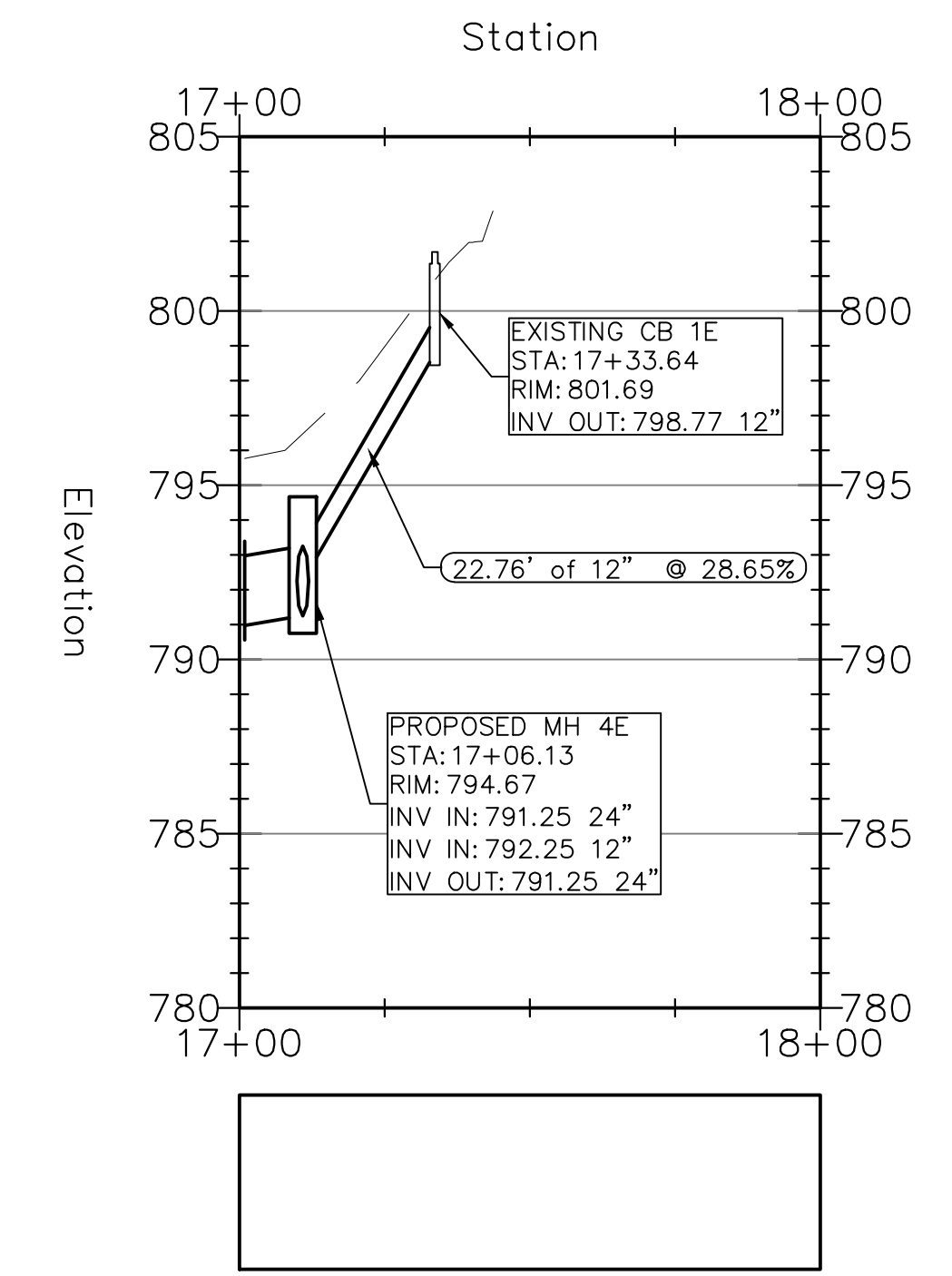


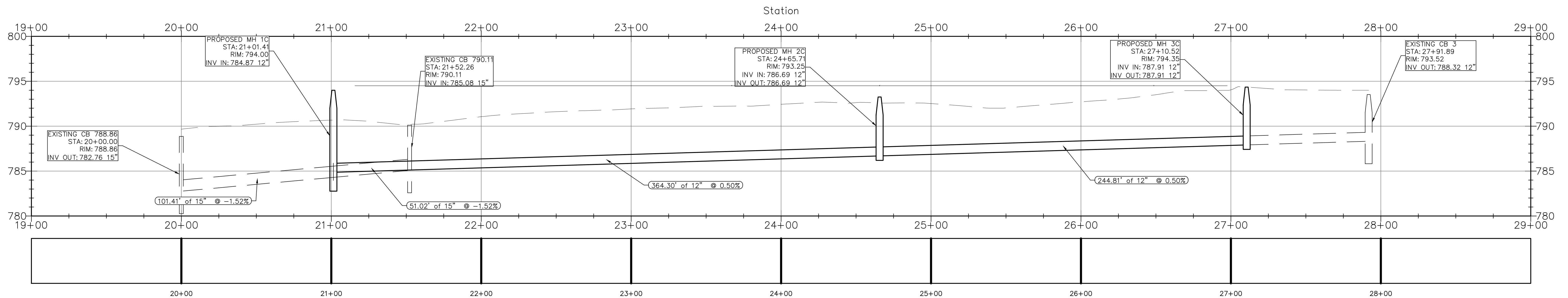
East Storm Sewer CL PROFILE



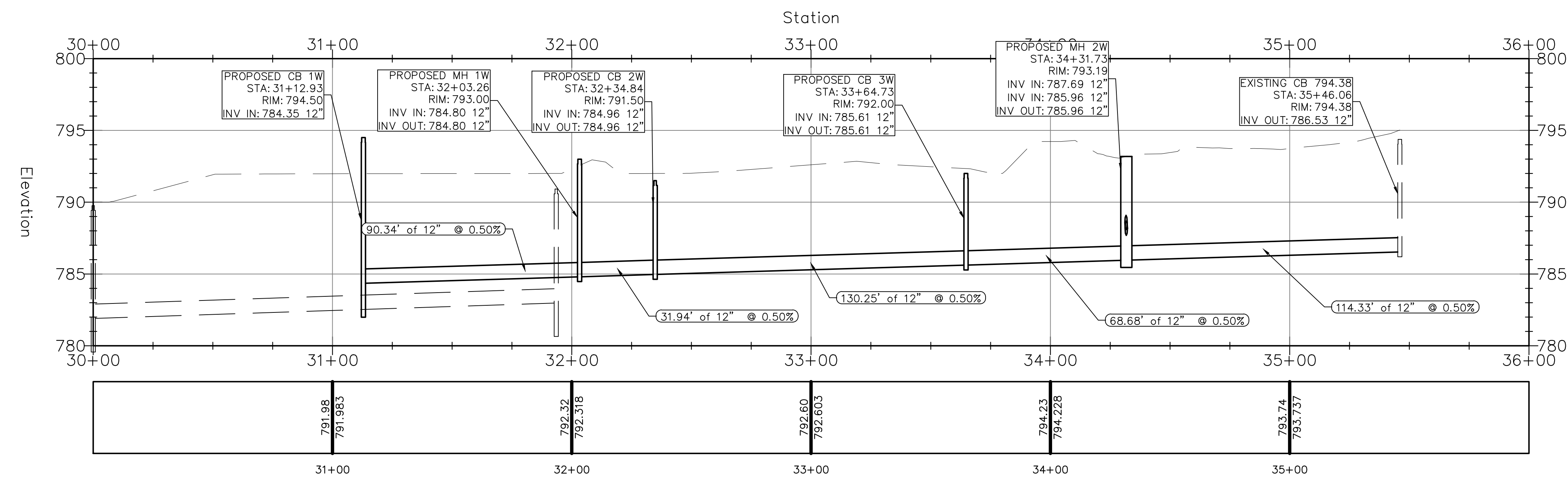
EAST STORM LATERAL A PRO



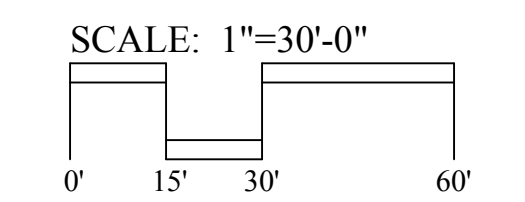
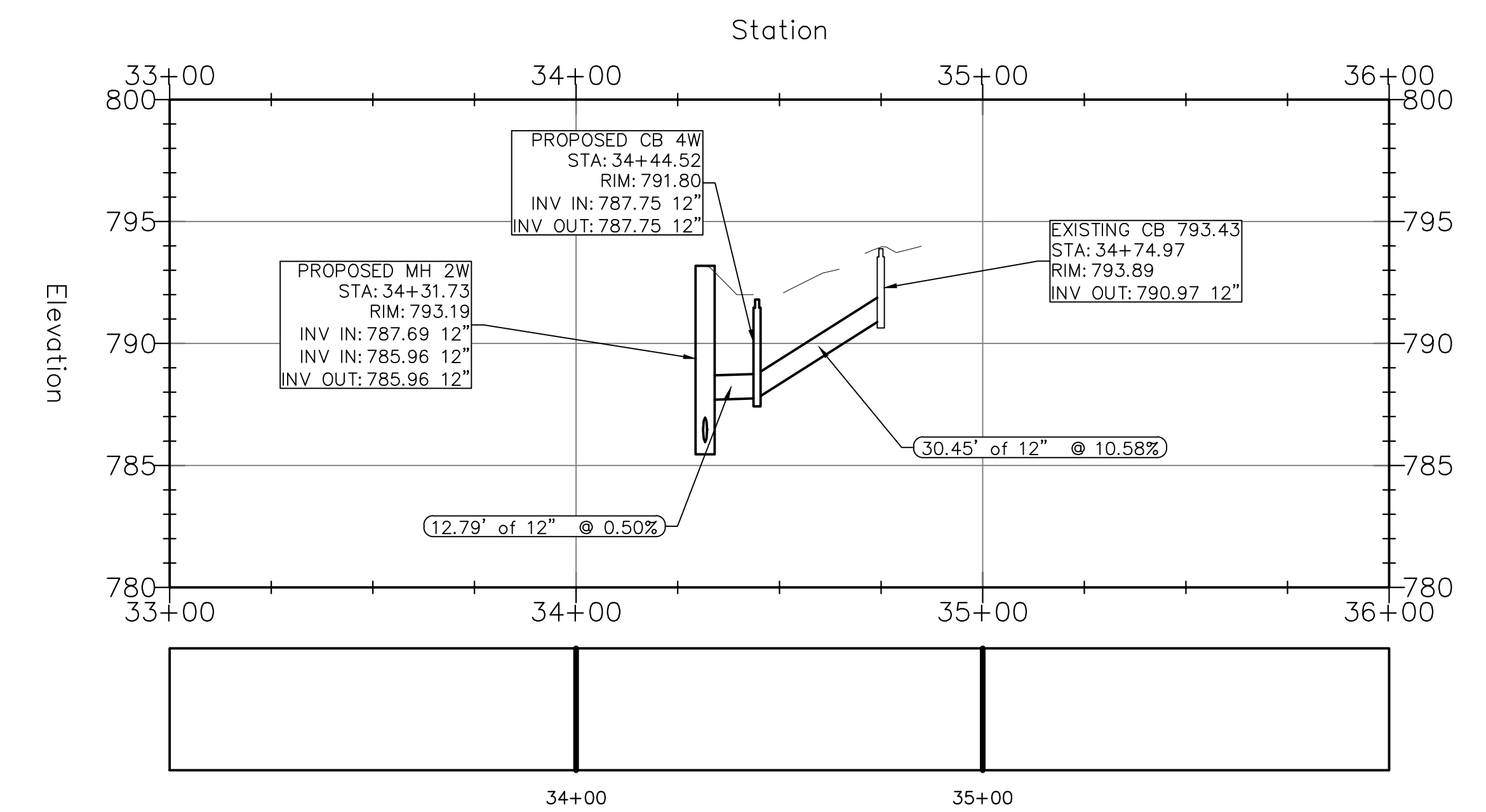
Central Storm Sewer CL PROFILE



West Storm Sewer CL PROFILE



West Storm Sewer Lateral A PROFILE



Northern Kentucky University - Intramural Fields and Support Building

VIVIAN LAMBI & ASSOCIATES, INC.
 ENVIRONMENTAL ENGINEERING ARCHITECTS
 2312 Park Avenue, Cincinnati, Ohio 45206
 Phone: 513.533.3344, Fax: 513.533.0164
 Mobile: 502.460.9475, Email: VLA@vllambiac.com

Omni ARCHITECTS
 212 North Upper Street
 Lexington, Kentucky 40507-1001
 p 859.252.6664 f 859.253.2558
 www.omniarchitects.com

NORTHERN KENTUCKY UNIVERSITY

Revision Date	Storm Sewer Profiles	#	Checked By:
		1203	JRS
		08/31/2012	TRW

Drawing Name: NKU Project Number:
 Project Number:
 Date:
 Drawn By: