

COUNTY OF	ITEM NO.	SHEET NO.
CAMPBELL	6-8105	RI

Commonwealth of Kentucky DEPARTMENT OF HIGHWAYS

PLANS OF PROPOSED PROJECT

CAMPBELL COUNTY

AA HIGHWAY TO I-275 CONNECTOR - JOHNS HILL ROAD TO THREE MILE ROAD

THESE PLANS ARE FOR GRADE, DRAIN & SURFACING



SHEET NO.	DESCRIPTION
R1	LAYOUT SHEET
R2 - R2E	TYPICAL SECTIONS
R2H - R2M	SUMMARY OF QUANTITIES
R2N	GENERAL NOTES
R20	CONSTRUCTION NOTES
R3 - R16	PLAN AND PROFILE SHEETS
R17 - R19	ROW SHEETS
R20 - R24	DETAIL SHEETS- ROUNDABOUT
R25	DETAIL SHEETS- I-75 RAMP
R28	DETAIL SHEETS- SEPIA
R29	DETAIL SHEETS- MARKING, STRIPING, & SIGNAGE
R30 - R30F	TEMPORARY TRAFFIC CONTROL SHEETS
R31 - R38	EROSION CONTROL SHEETS
R40 - R43	COORDINATE CONTROL/RW MONUMENTATION SHEETS
R45 - R59	GEOTECHNICAL SHEETS
R60 - R78	STORM DRAINAGE SHEETS
X1 - X119	CROSS SECTION SHEETS

SHEETS NOT INCLUDED IN TOTAL SHEETS
 NOT COUNTED 2A - 20; 3A, 10A, 16A, 28A-28C, 29A-29F, 30A-30F
 NOT USED 2F, 2G, 26, 27, 39, 44

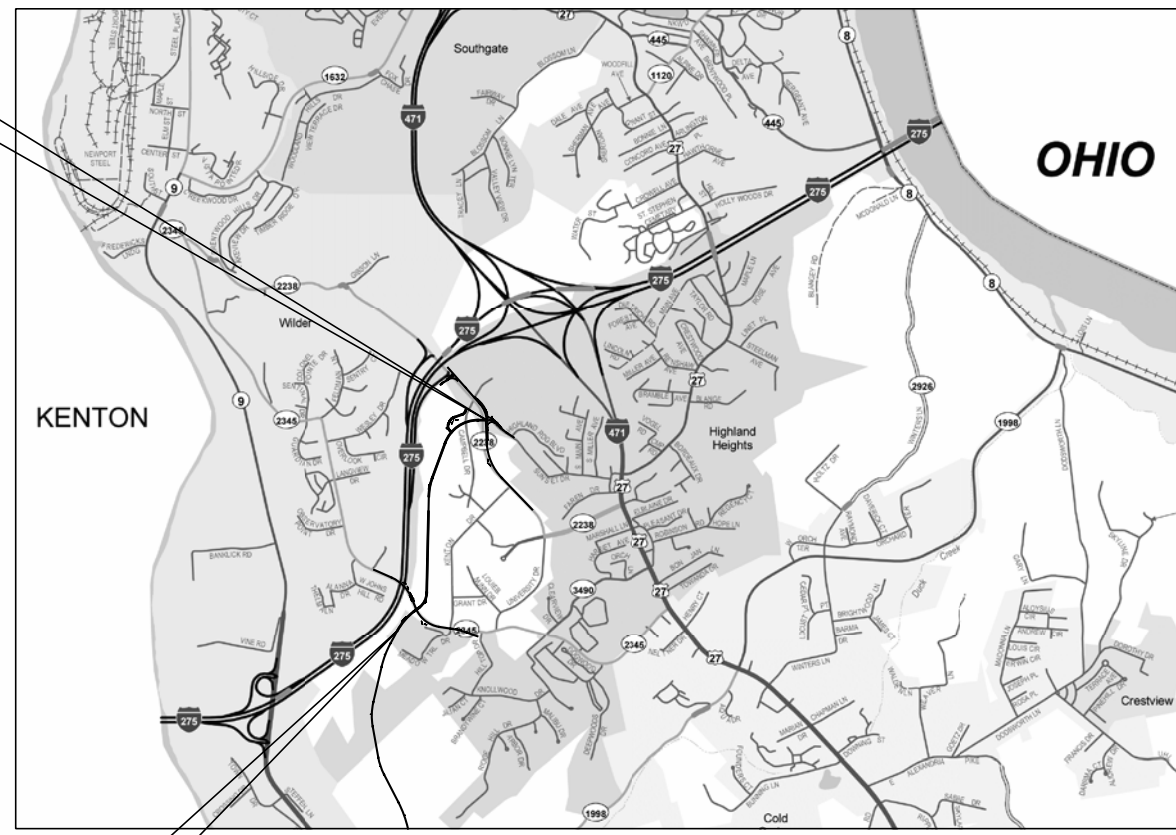
STANDARD DRAWINGS		
NUMBER		
RBC-001-09	RDI 020-08	RPN-015-04
RBC 002-01	RDI 021	RPS-010-10
RBC 003-07	RDI 025-04	RPS-020-13
RBI-001-09	RDI 026	RPX-010-04
RBI-002-06	RDI 031-01	TTC 100-01
RBR-001-11	RDI-045-01	TTC 105-01
RBR-005-10	RDI-120-03	TTC 115-01
RBR-010-05	RDM 005-05	TTC 135-01
RBR-015-04	RDM-100-02	TTC 155-01
RBR-016-04	RDP-001-05	TTC 160-01
RBR 050-05	RDP-005-04	TTD 110-01
RDB 003-07	RDP-006-03	TTD 120
RDB 011-07	RDP-010-08	TTS 105-01
RDB 013-06	RDX 001-05	TTS 115-01
RDB 014-05	RDX 002-03	TTS 120-01
RDB 015-03	RDX 160-05	TTS 125-01
RDB 016-02	RDX-210-02	
RDB 018-03	RDX 220-04	
RDB 019-03	RDX 225	
RDB 270-08	RDX 230	
RDB-271-04	RGS-001-06	
RDB-272-06	RGS-002-05	
RDB-273-05	RGX-001-05	
RDB-400-04	RGX 005-05	
RDB-410-05	RGX-010-03	
RDB-420-04	RGX 030-06	
RDD 040-04	RGX 200	
	RGX 040	
	RPM-100-09	
	RPM-110-05	
	RPM-120-06	
	RPM 150-06	
	RPM 152-06	
	RPM 160-03	

TOTAL NUMBER STANDARDS: 77

SEPIA DRAWINGS #9, 15, 14 AS DETAIL SHEETS 28, 28A, & 28B

DESIGN CRITERIA	
CLASS OF HIGHWAY	URBAN COLLECTOR
TYPE OF TERRAIN	ROLLING
DESIGN SPEED	45 MPH
REQUIRED NPSD	360 FT
REQUIRED PSD	NO PASSING
LEVEL OF SERVICE	N/A
ADT PRESENT ()	NEW ROADWAY
ADT FUTURE (2030)	SEE INTERSECTION DETAILS
DHV	SEE INTERSECTION DETAILS
D %	SEE INTERSECTION DETAILS
T %	SEE INTERSECTION DETAILS

GEOGRAPHIC COORDINATES	
LATITUDE	39 DEGREES 02 MINUTES NORTH
LONGITUDE	84 DEGREES 28 MINUTES WEST
DESIGNED	
% RESTRICTED SD	N/A
LEVEL OF SERVICE	N/A
MAX. DISTANCE W/O PASSING	NO PASSING



NEW CONNECTOR ROAD
END CONSTRUCTION
STA. 248+30.83

NEW CONNECTOR ROAD
BEGIN CONSTRUCTION
STA. 192+72



SCALE IN FEET

LAYOUT MAP

THIS PROJECT IS OFF THE NH SYSTEM

THIS PROJECT IS A PARTIALLY CONTROLLED ACCESS HIGHWAY. ACCESS SHALL BE PROVIDED ONLY WHERE SPECIFICALLY INDICATED ON PLANS.

NEW CONNECTOR ROAD	JOHNS HILL ROAD	THREE MILE ROAD	I-75 RAMP & SUNSET DRIVE
LENGTH 5.434 LIN. FT. 1.029 MILES	LENGTH 1.195 LIN. FT. 0.226 MILES	LENGTH 1.867 LIN. FT. 0.354 MILES	LENGTH .590 LIN. FT. 0.112 MILES
ADDED FOR EQUALITIES	ADDED FOR EQUALITIES	ADDED FOR EQUALITIES	ADDED FOR EQUALITIES
DEDUCTED NOT INCLUDED	DEDUCTED NOT INCLUDED	DEDUCTED NOT INCLUDED	DEDUCTED NOT INCLUDED
RAILROAD CROSSINGS NO. LIN. FT.	RAILROAD CROSSINGS NO. LIN. FT.	RAILROAD CROSSINGS NO. LIN. FT.	RAILROAD CROSSINGS NO. LIN. FT.
BRIDGES LIN. FT.	BRIDGES LIN. FT.	BRIDGES LIN. FT.	BRIDGES LIN. FT.

Commonwealth of Kentucky
DEPARTMENT OF HIGHWAYS
COUNTY OF
CAMPBELL



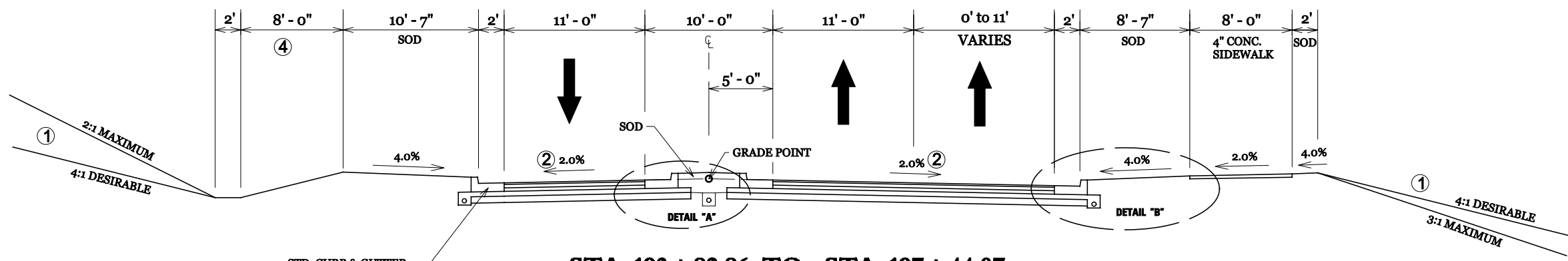
ITEM NO. 6-8105
 PROJECT NUMBER: FDXX XXX XXXX XXX-XXX
 LETTING DATE: _____
 RECOMMENDED BY: _____ DATE: _____
 PROJECT MANAGER
 PLAN APPROVED BY: _____ DATE: _____
 STATE HIGHWAY ENGINEER

CONSTRUCTION PLANS

DIVISION OF CONSTRUCTION

E-SHEET NAME:

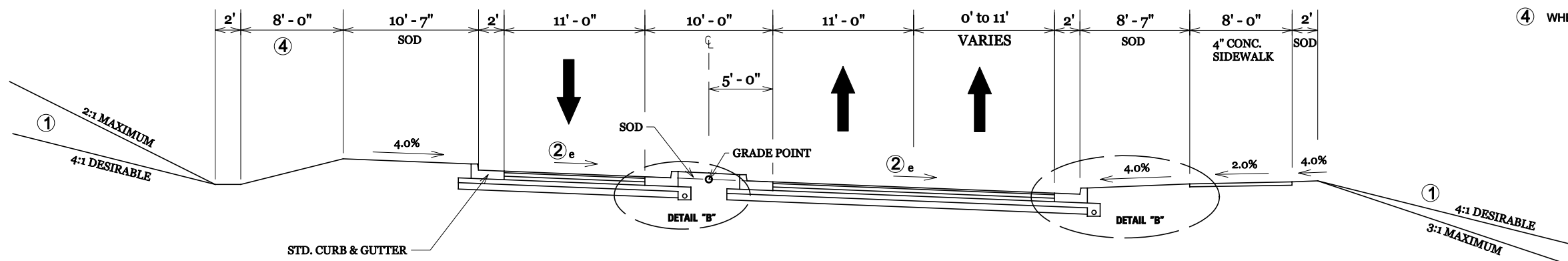
TYPICAL SECTIONS - AA CONNECTOR ROAD



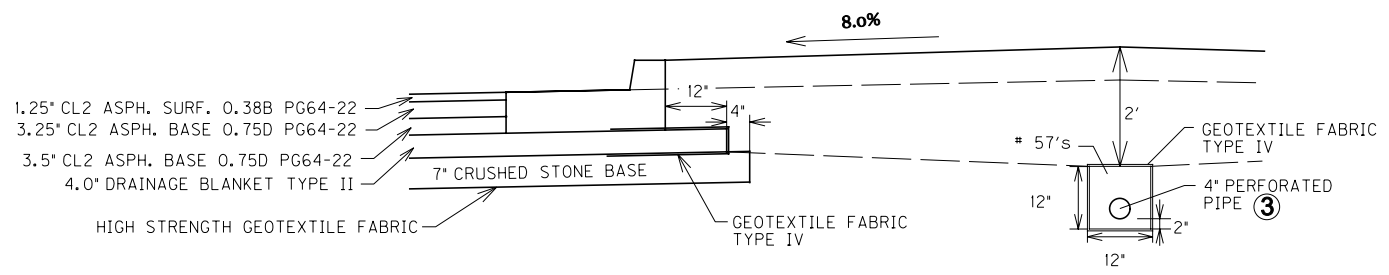
STA. 193+82.86 TO STA. 197+44.07
STA. 201+63.82 TO STA. 204+35.89

(SEE ROUNDABOUT DETAIL SHEETS FOR
 PAVEMENT DETAILS STA. 197+44.07 TO STA.
 201+63.82)

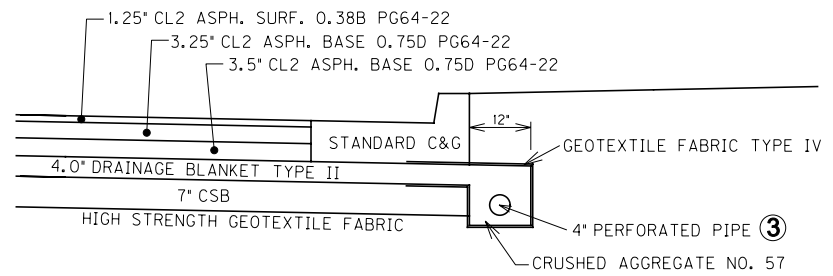
- ① SEE X-SECTIONS FOR CONSTRUCTION OUTSIDE THE SIDEWALK BERM
- ② SEE X-SECTIONS AND ROUNDABOUT DETAILS FOR PAVEMENT X-SLOPES AND TRANSITIONS.
- ③ DRAIN TO THE STORM SEWER SYSTEM
- ④ WHERE SHOWN ON THE PLANS OR REQUIRED FOR DRAINAGE PURPOSES



SUPERELEVATED SECTION



DETAIL "A"

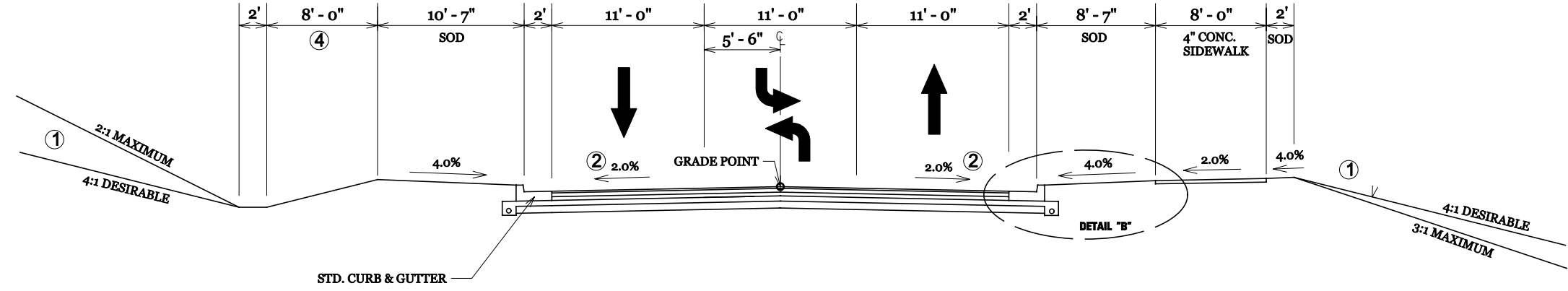


DETAIL "B"

E-SHEET NAME:

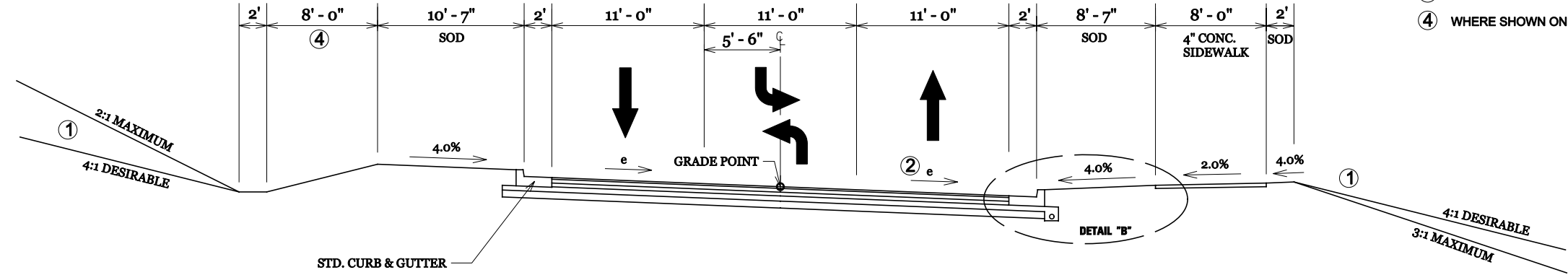
CHECKED BY: _____ DATE: _____
 APPROVED BY: _____ DATE: _____

TYPICAL SECTIONS - AA CONNECTOR ROAD



STA. 204 + 35.89 TO STA. 245 + 77.50

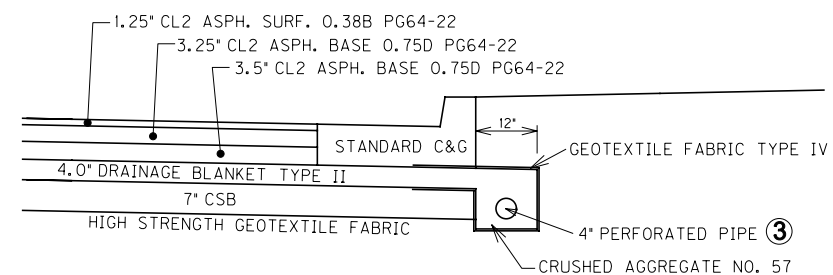
(SEE ROUNDABOUT DETAIL SHEETS FOR PAVEMENT DETAILS STA. 245 + 77.50 TO STA. 248 + 31)



SUPERELEVATED SECTION

(SEE ROUNDABOUT DETAIL SHEETS FOR PAVEMENT DETAILS STA. 245 + 77.50 TO STA. 248 + 31)

- ① SEE X-SECTIONS FOR CONSTRUCTION OUTSIDE THE SIDEWALK BERM
- ② SEE X-SECTIONS AND ROUNDABOUT DETAILS FOR PAVEMENT X-SLOPES AND TRANSITIONS.
- ③ DRAIN TO THE STORM SEWER SYSTEM
- ④ WHERE SHOWN ON THE PLANS OR REQUIRED FOR DRAINAGE PURPOSES



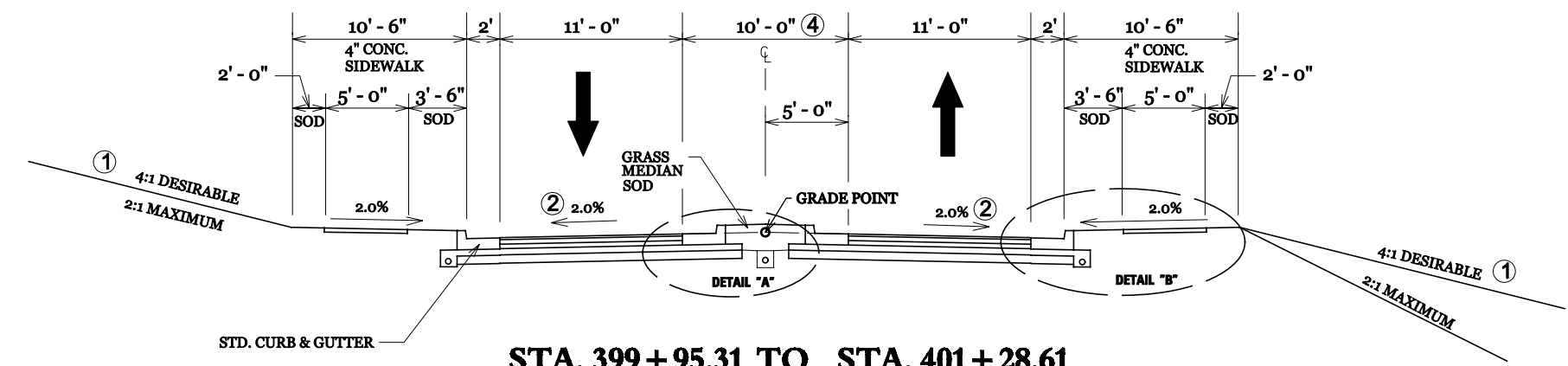
DETAIL "B"

TYPICAL SECTIONS

CHECKED BY _____ DATE _____
 APPROVED BY _____ DATE _____

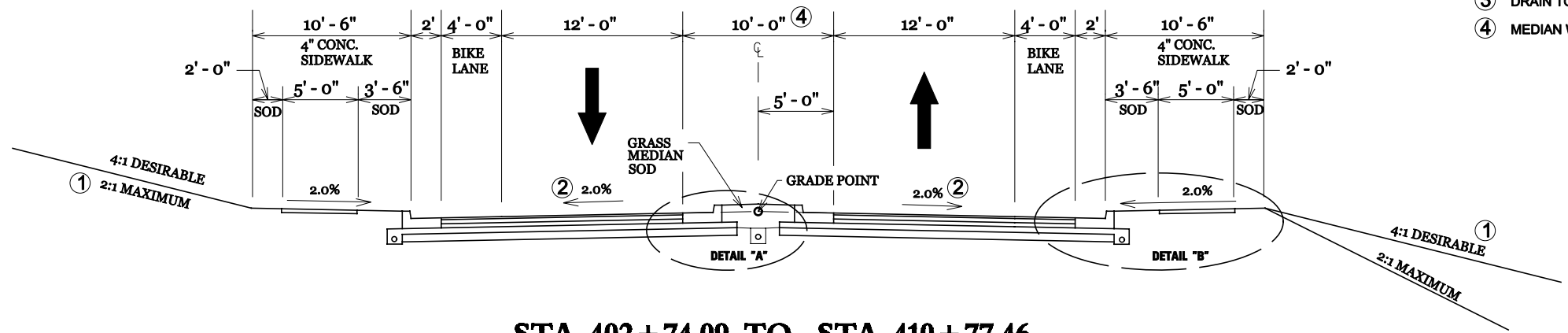
E-SHEET NAME:

TYPICAL SECTIONS - JOHN'S HILL ROAD



STA. 399+95.31 TO STA. 401+28.61

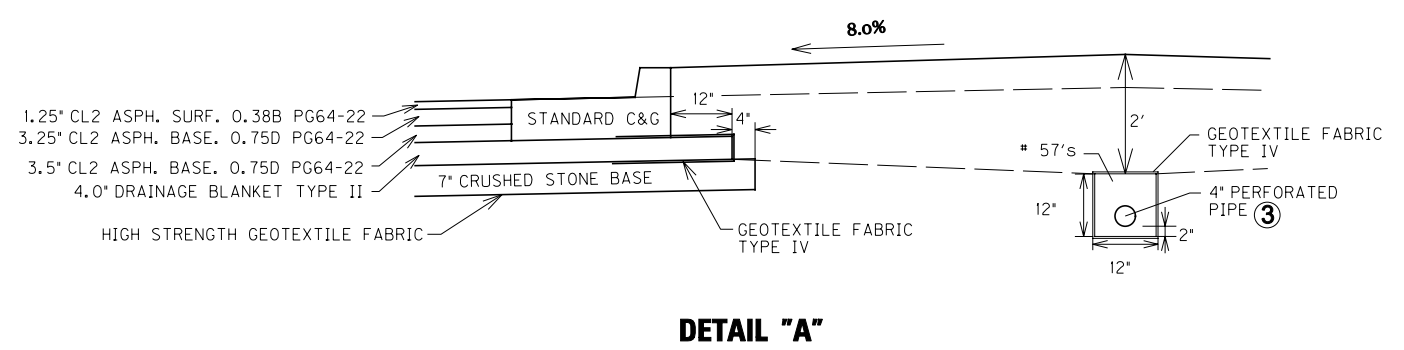
(SEE ROUNDABOUT DETAIL SHEETS FOR PAVEMENT DETAILS STA. 401+28.61 TO STA. 405+04.82)



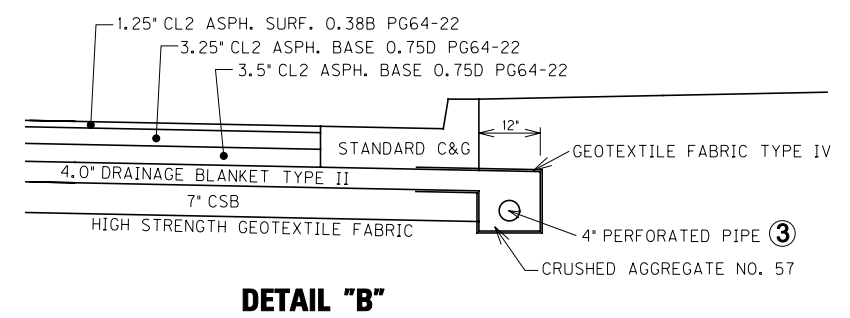
STA. 402+74.09 TO STA. 410+77.46

(SEE ROUNDABOUT DETAIL SHEETS FOR PAVEMENT DETAILS STA. 401+28.61 TO STA. 405+04.82)

- ① SEE X-SECTIONS FOR CONSTRUCTION OUTSIDE THE SIDEWALK BERM
- ② SEE X-SECTIONS AND ROUNDABOUT DETAILS FOR PAVEMENT X-SLOPES AND TRANSITIONS.
- ③ DRAIN TO THE STORM SEWER SYSTEM
- ④ MEDIAN WIDTH VARIES, SEE PLAN SHEET.



DETAIL "A"

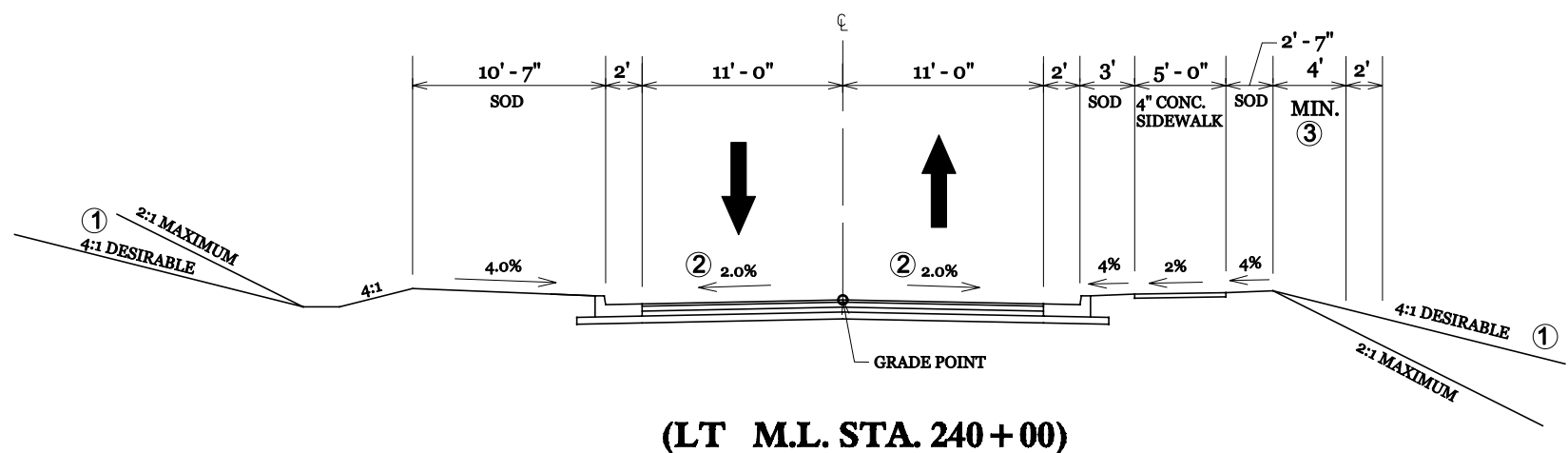


DETAIL "B"

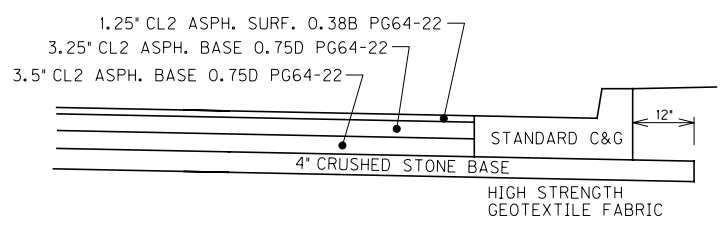
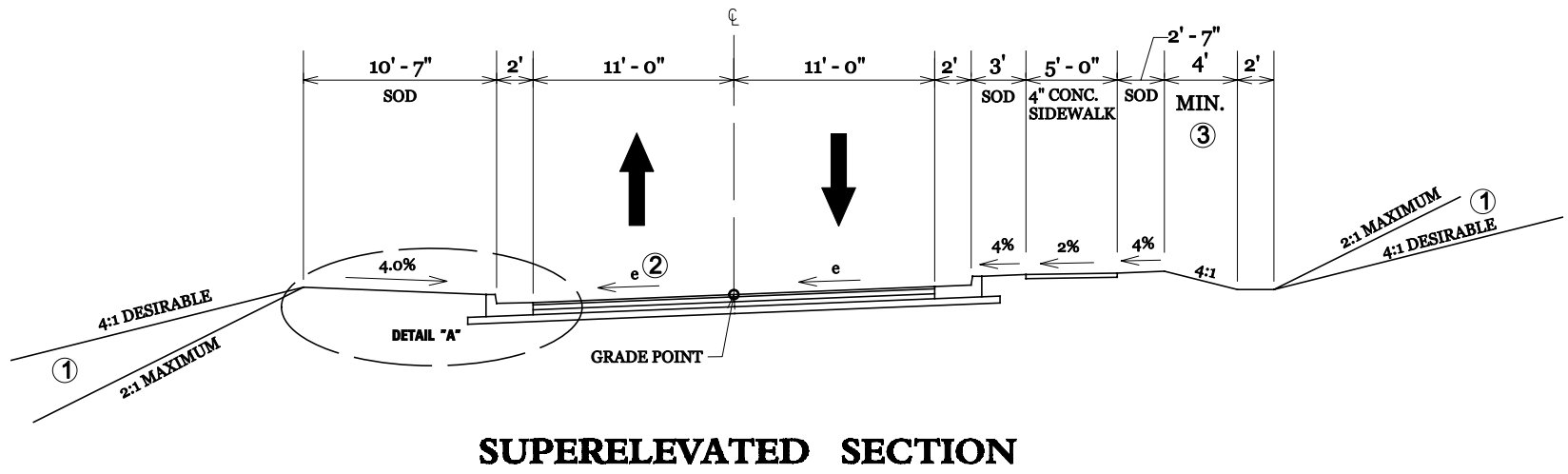
E-SHEET NAME:

CHECKED BY: _____ DATE: _____
APPROVED BY: _____ DATE: _____

TYPICAL SECTIONS - GATEWAY ENTRANCE



- ① SEE X-SECTIONS FOR CONSTRUCTION OUTSIDE THE SIDEWALK BERM
- ② SEE X-SECTIONS FOR PAVEMENT X-SLOPES AND TRANSITIONS.
- ③ WHERE SHOWN ON THE PLANS OR REQUIRED FOR DRAINAGE PURPOSES



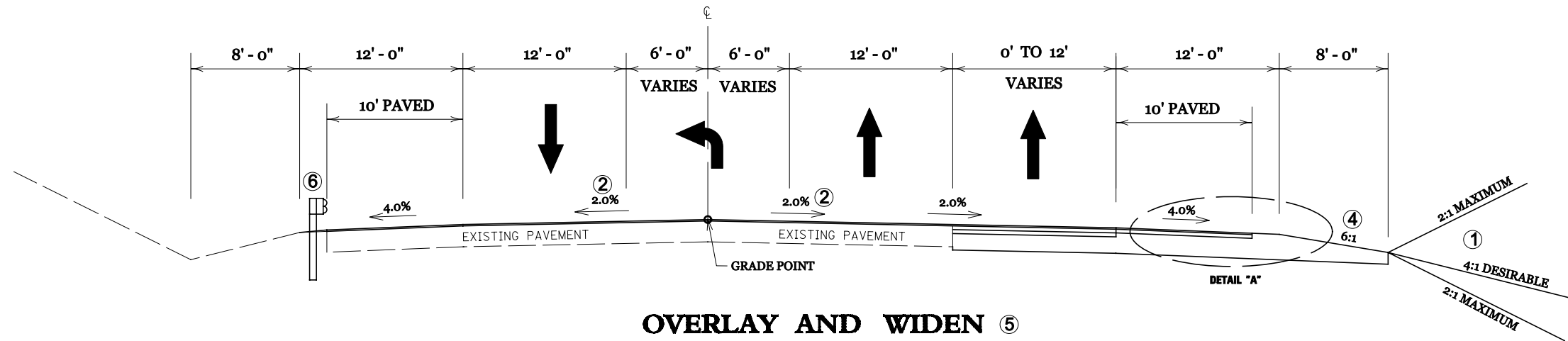
DETAIL "A"

CHECKED BY _____ DATE _____
 APPROVED BY _____ DATE _____

E-SHEET NAME:

TYPICAL SECTIONS - THREE MILE ROAD

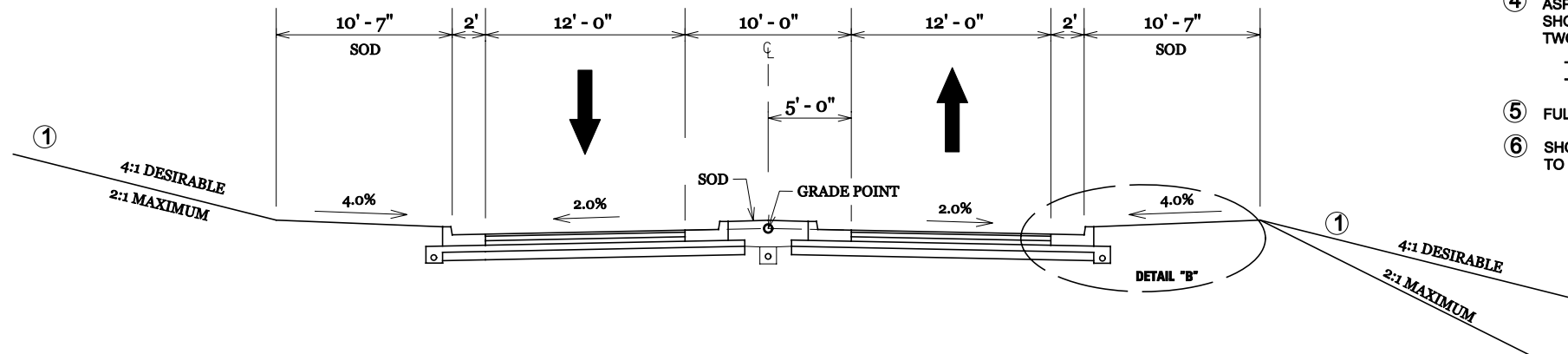
COUNTY OF	ITEM NO.	SHEET NO.
CAMPBELL	6-8105	R2D



OVERLAY AND WIDEN ⑤

STA 486+20 TO STA. 489+20 (MILL 1.25" & OVERLAY)
 STA 489+20 TO STA. 498+00 (OVERLAY & WIDEN)
 STA 702+00 TO 704+50 (OVERLAY & WIDEN)

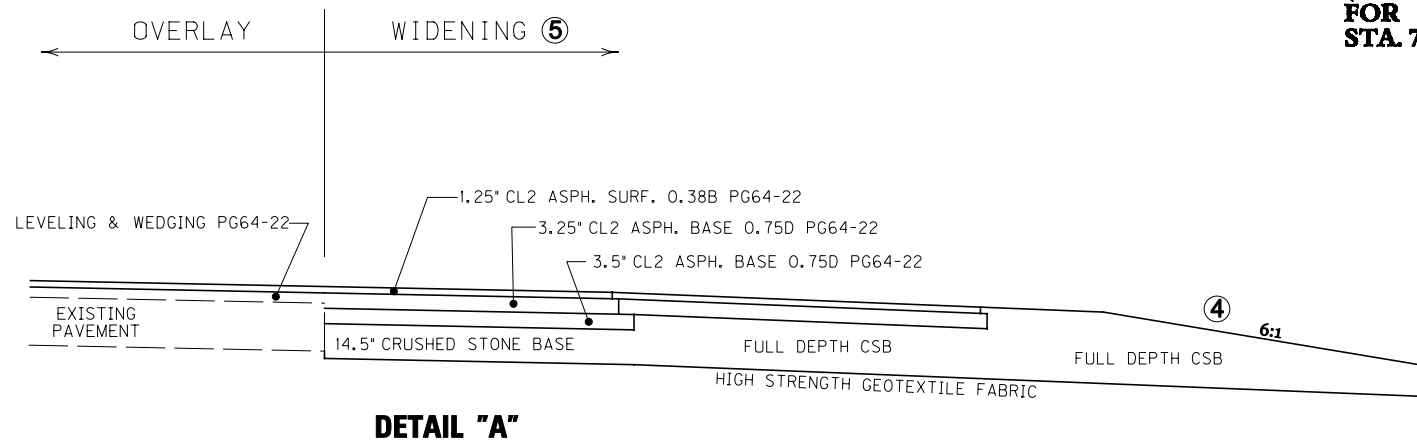
- ① SEE X-SECTIONS FOR SLOPES OUTSIDE THE SHOULDER.
- ② SEE X-SECTIONS FOR PAVEMENT X-SLOPES AND TRANSITIONS.
- ③ DRAIN TO THE STORM SEWER SYSTEM
- ④ ASPHALT SEAL REQUIRED FROM OUTSIDE EDGE OF PAVED SHOULDER TO A POINT 2' DOWN THE DITCH OR FILL SLOPE. TWO APPLICATIONS OF THE FOLLOWING:
 - EMULSIFIED ASPHALT RS-2 @ 2.4 LBS/SY
 - ASPHALT SEAL AGGREGATE @ 20 LBS/SY
- ⑤ FULL DEPTH PAVEMENT DESIGN USED AT I-275 RAMPS
- ⑥ SHOULDERS SHALL BE WIDENED 1' WHERE GUARDRAIL IS TO BE INSTALLED.



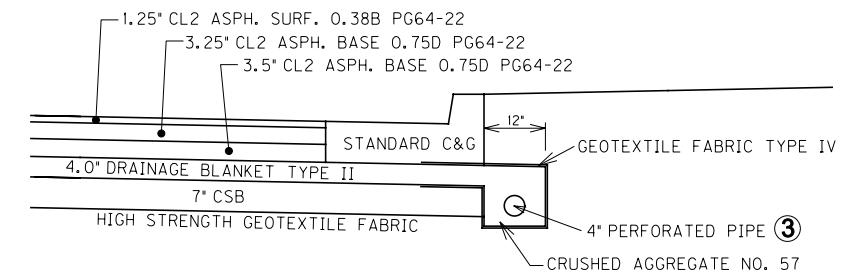
FULL DEPTH PAVEMENT

STA. 498+00 TO STA. 500+00 (NORTH END)
 STA 700+00 TO 702+00 (SOUTH END)

(SEE ROUNDABOUT DETAIL SHEETS FOR PAVEMENT DETAILS STA. 498+19.51 TO STA. 702+06.35)



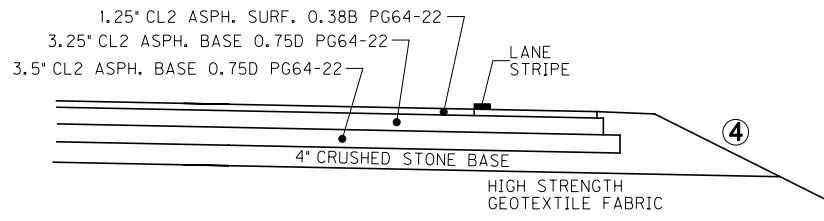
DETAIL "A"



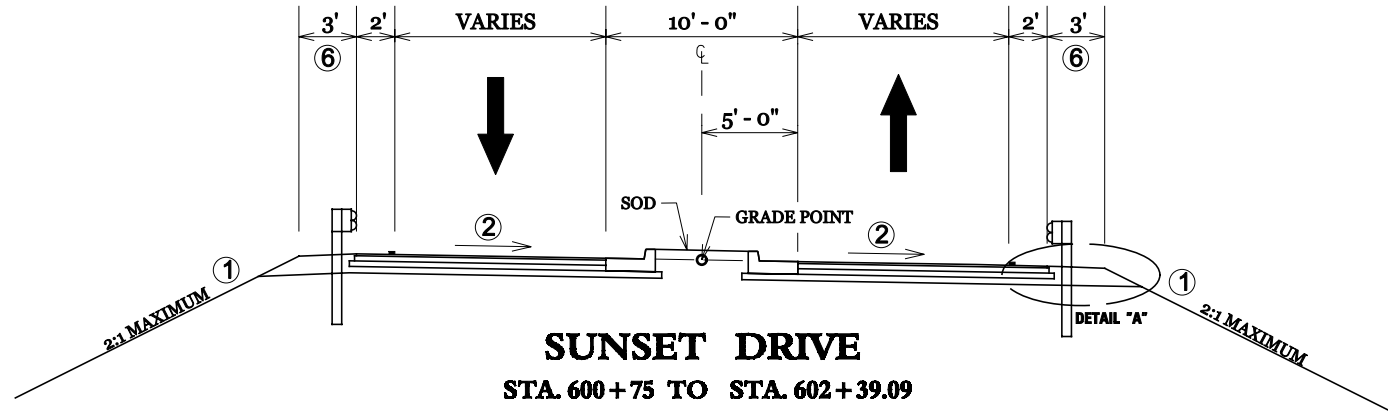
DETAIL "B"

TYPICAL SECTIONS

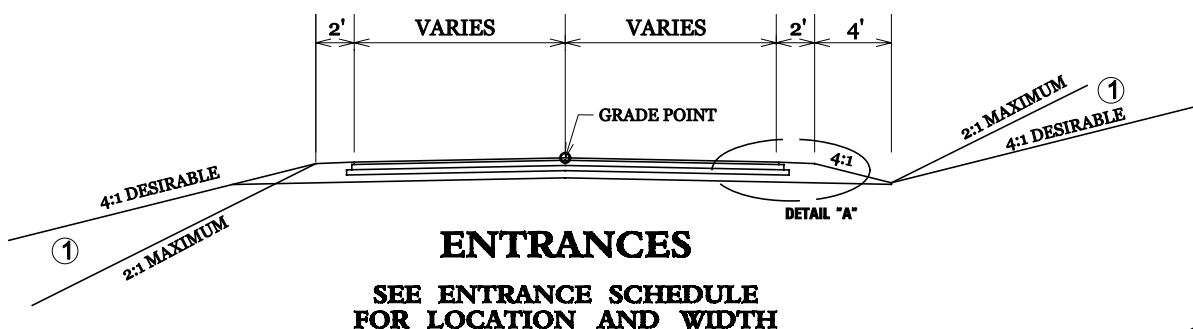
TYPICAL SECTIONS



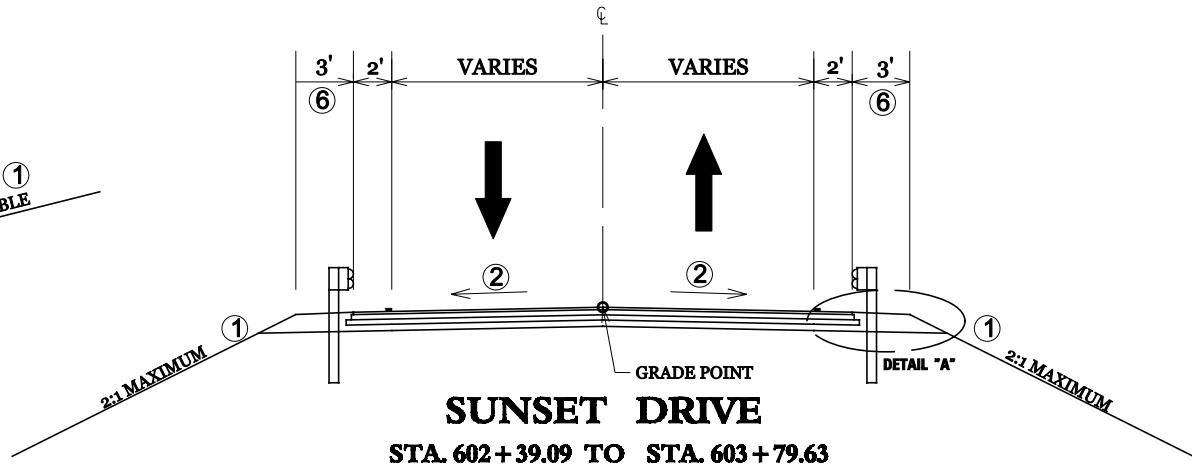
DETAIL "A"



**SUNSET DRIVE
STA. 600+75 TO STA. 602+39.09**

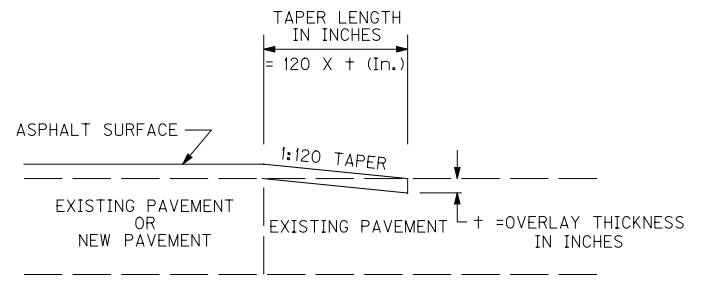


**ENTRANCES
SEE ENTRANCE SCHEDULE
FOR LOCATION AND WIDTH**



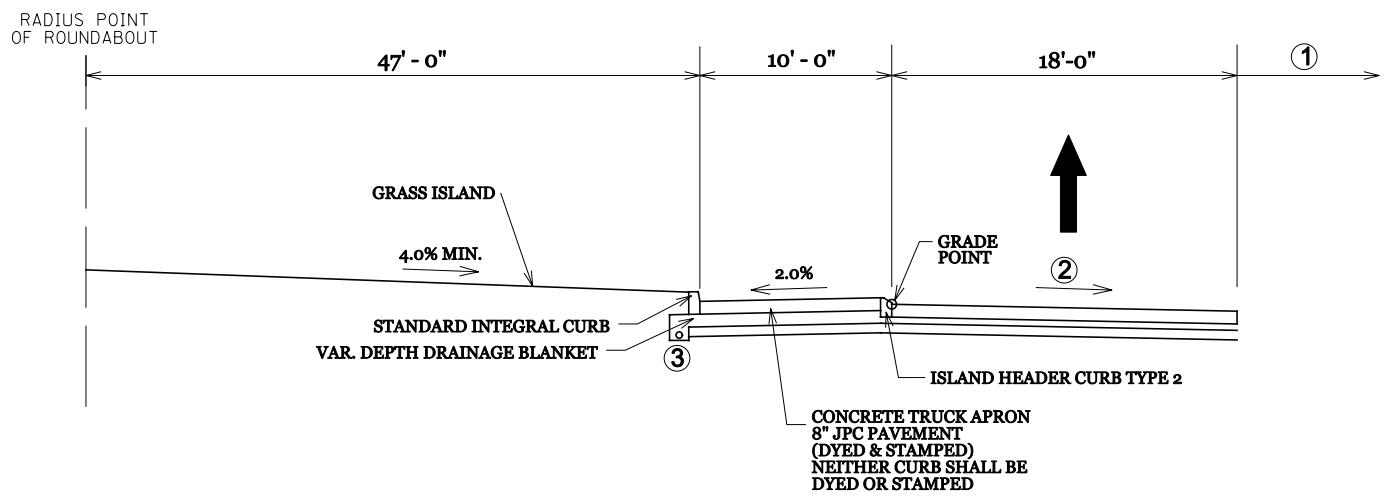
**SUNSET DRIVE
STA. 602+39.09 TO STA. 603+79.63**

- ① SEE X-SECTIONS FOR SLOPES OUTSIDE THE SHOULDER OR SIDEWALK BERM.
- ② SEE X-SECTIONS AND ROUNDABOUT DETAILS FOR PAVEMENT WIDTHS, X-SLOPES, AND TRANSITIONS.
- ③ DRAIN TO THE STORM SEWER SYSTEM
- ④ ASPHALT SEAL REQUIRED FROM OUTSIDE EDGE OF PAVED SHOULDER TO A POINT 2' DOWN THE DITCH OR FILL SLOPE. TWO APPLICATIONS OF THE FOLLOWING:
- EMULSIFIED ASPHALT RS-2 @ 2.4 LBS/SY
- ASPHALT SEAL AGGREGATE @ 20 LBS/SY
- ⑤ CONSTRUCT EDGE KEY AT THE FOLLOWING LOCATIONS:
- 36 LF AT TESSENEER RD. (LT 495+00 THREE MILE RD)
- 45 LF AT STA 704+50 THREE MILE RD. SOUTH
- ⑥ SHOULDERS SHALL BE WIDENED 1' WHERE GUARDRAIL IS TO BE INSTALLED.



EDGE KEY DETAIL ⑤

Work under this item shall include cutting out the existing bituminous surface to a minimum depth and width as shown, so the new surface may heel into the existing surface. The contract unit price bid per linear foot for "EDGE KEY" shall include all necessary materials, labor, equipment, etc. to perform the work and dispose of the bituminous material removed.



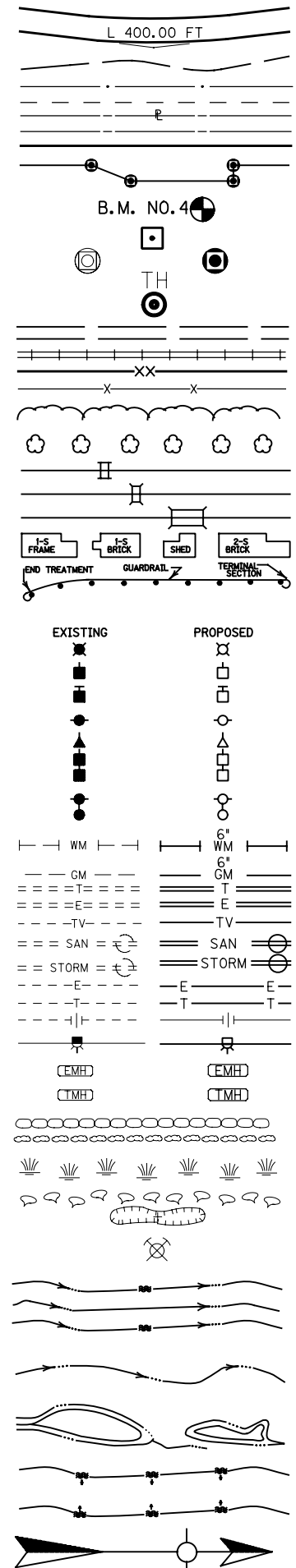
**TYPICAL APRON AND ROADWAY DETAILS
FOR ROUNDABOUTS AT
JOHNS HILL ROAD & THREE MILE ROAD**

E-SHEET NAME:

CHECKED BY _____ DATE _____
APPROVED BY _____ DATE _____

CONVENTIONAL SIGNS

- SURVEY LINE
- GRADE LINE
- GROUND LINE
- COUNTY LINE
- CORPORATE LIMITS
- EXIST. PROPERTY LINE
- EXIST. RIGHT OF WAY & PROPERTY LINE
- PROPOSED RIGHT OF WAY
- RIGHT OF WAY MONUMENT
- BENCH MARK
- EXISTING R/W MARKER
- RIGHT OF WAY MONUMENT EXISTING/PROPOSED
- UTILITY TEST HOLE
- EXISTING ROAD
- RAILROAD
- FENCE (CONTROLLED ACCESS)
- FENCE (EXCEPT STONE AND HEDGE)
- TREE LINE
- TREES
- PIPE CULVERT
- CULVERT
- BRIDGE
- BUILDINGS
- GUARDRAIL
- LIGHTING POLE
- POWER POLE
- JOINT POWER & TELEPHONE POLE
- TELEPHONE & TELEGRAPH POLE
- ANCHOR, POWER OR TELEPHONE
- STUB POWER
- STUB TELEPHONE
- WATER MAIN
- GAS MAIN
- TELEPHONE DUCT
- ELECTRIC DUCT
- DIRECT BURIAL TV CABLE
- SANITARY SEWER (WITH MANHOLE)
- STORM SEWER (WITH MANHOLE)
- DIRECT BURIAL ELECTRIC CABLE
- DIRECT BURIAL TELEPHONE CABLE
- OVERHEAD WIRE
- TRAFFIC LIGHTS
- ELECTRIC MANHOLE
- TELEPHONE MANHOLE
- STONE FENCE
- HEDGE FENCE
- SWAMP OR MARSH
- SPRINGS
- SINKHOLE
- QUARRY SITE
- BLUE LINE STREAM
- INTERMITTENT STREAM OR DITCH
- LAKES OR PONDS
- REGULATED FLOODWAY
- NORTH POINT



ORIGIN OF LEVELS

3D Stations - 7008 (PID JZ3538) & M5 (from Item No. 6-5005.00 'Correct Rockfall Hazards I-471/I-275 Interchange', performed by Woolpert, March 2001)

2D Stations - ERLANGER CORS L1 (PID A17428)

UTILITY OWNERS

ELECTRIC
DUKE ENERGY KENTUCKY

NATURAL GAS
DUKE ENERGY KENTUCKY

WATER
NORTHERN KENTUCKY WATER DISTRICT (NKWD)

SANITARY SEWER
SANITATION DISTRICT #1 (SD1)

BEFORE YOU DIG

↓

THE CONTRACTOR IS ADVISED THAT HE CAN CALL 1-800-752-6007 TOLL-FREE A MINIMUM OF 24 HOURS PRIOR TO EXCAVATION FOR INFORMATION ON LOCATION OF UNDERGROUND UTILITIES.

BE ADVISED THAT THE NORTHERN KENTUCKY WATER DISTRICT AND SANITATION DISTRICT #1 DO NOT PARTICIPATE IN BEFORE YOU DIG AND SHALL BE CONTACTED SEPARATELY

Commonwealth of Kentucky
DEPARTMENT OF HIGHWAYS
COUNTY OF
CAMPBELL

PROJECT _____
NUMBERS: FDXX XXX XXXX XXX-XXX

NEW CONNECTOR ROAD
ITEM NO. 6-8105

CHECKED BY _____ DATE _____ APPROVED BY _____ DATE _____ E-SHEET NAME: _____

COUNTY OF	ITEM NO.	SHEET NO.
CAMPBELL	6-8105	R3A

195+00

200+00

205+00

**BEGIN CONSTRUCTION
SECTION 2- AA CONNECTOR
STA. 192+72**

**AA CONNECTOR STA 199+96.32=
JOHN'S HILL RD STA 402+74.09
(SEE SHEET R11)**

**FOR PAVEMENT DETAILS AT
ROUNDAABOUT SEE SHEET R20**

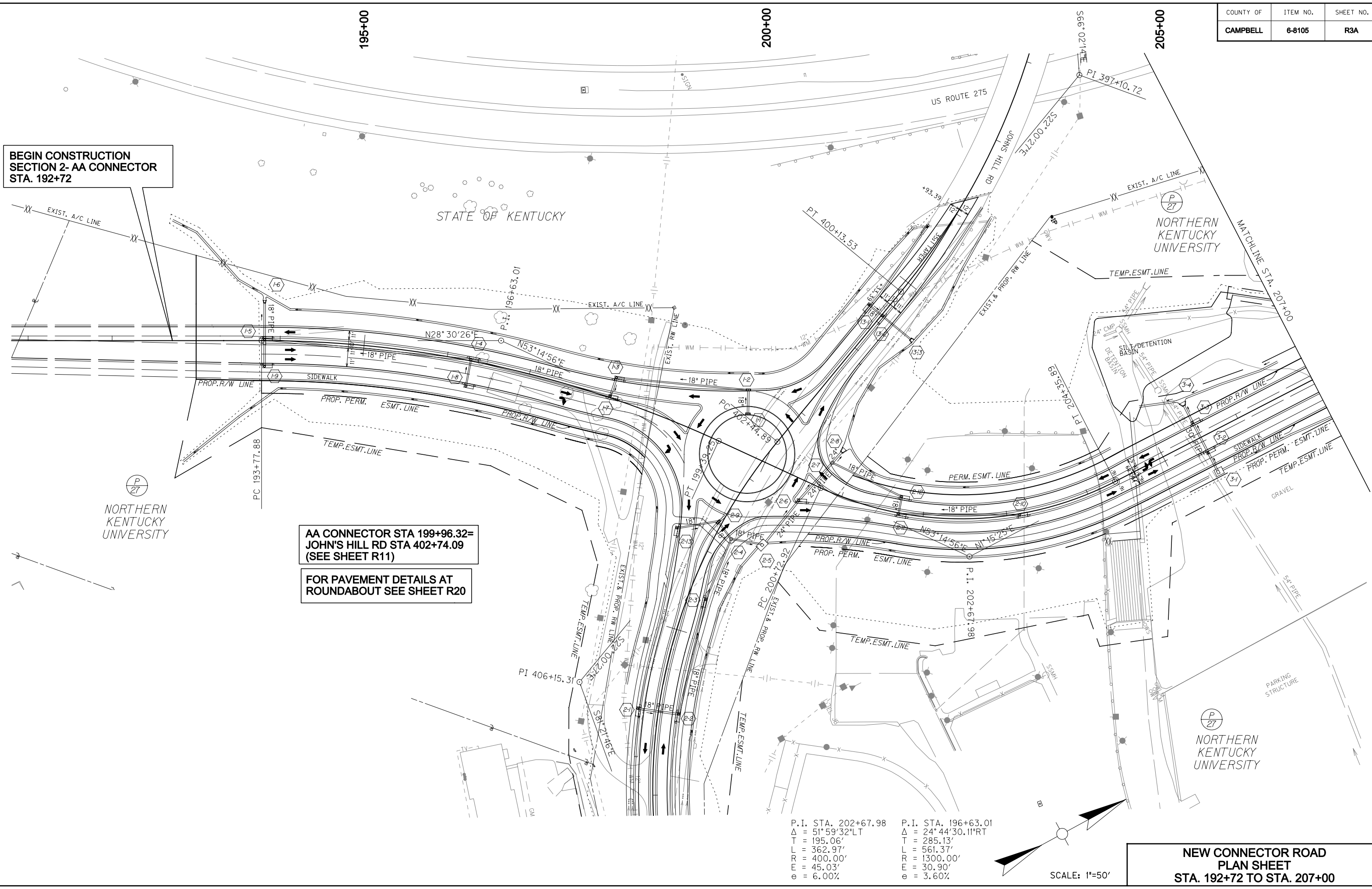
P.I. STA. 202+67.98	P.I. STA. 196+63.01
$\Delta = 51^{\circ}59'32''\text{LT}$	$\Delta = 24^{\circ}44'30.11''\text{RT}$
T = 195.06'	T = 285.13'
L = 362.97'	L = 561.37'
R = 400.00'	R = 1300.00'
E = 45.03'	E = 30.90'
e = 6.00%	e = 3.60%

SCALE: 1"=50'

**NEW CONNECTOR ROAD
PLAN SHEET
STA. 192+72 TO STA. 207+00**

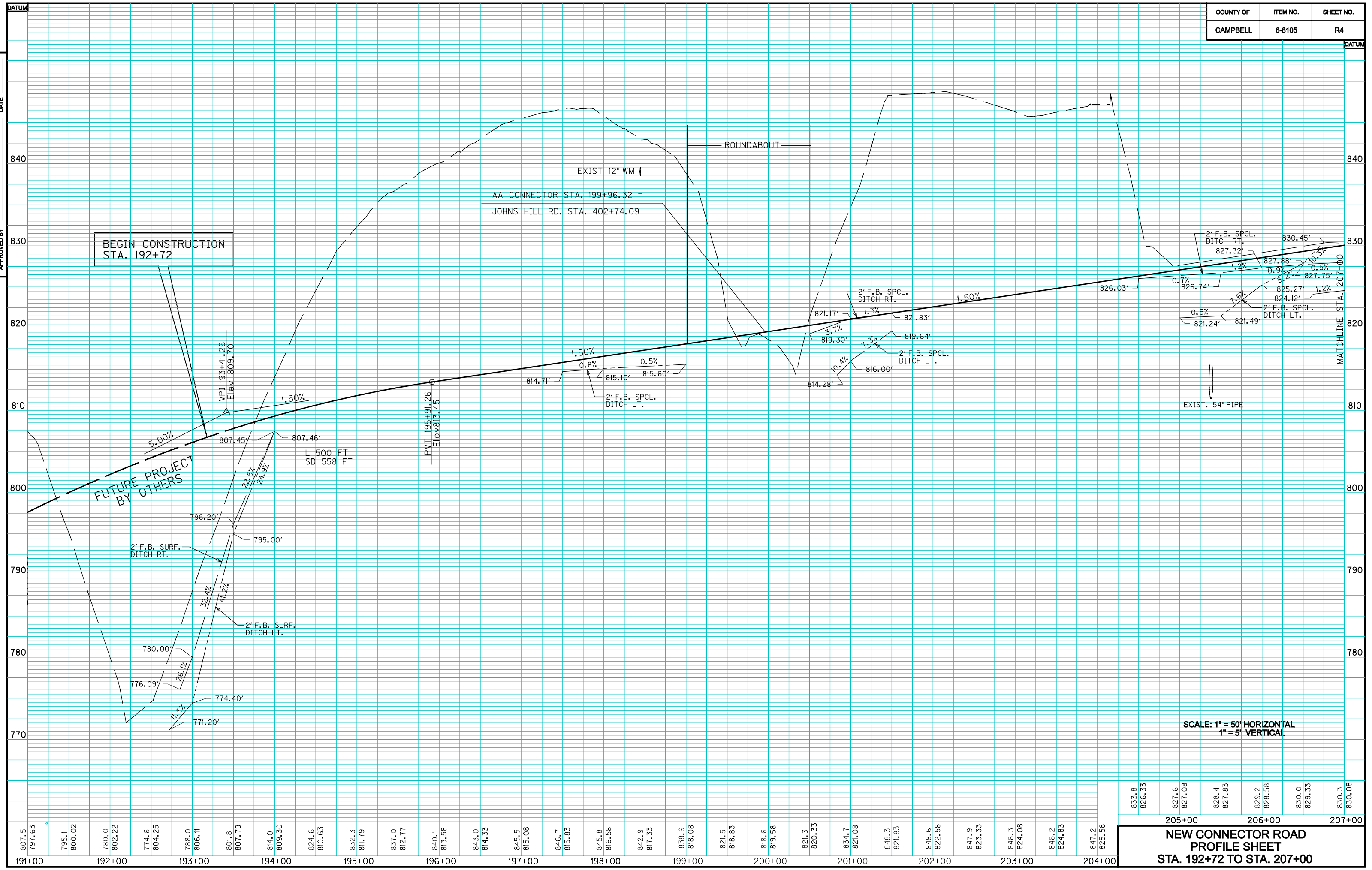
CHECKED BY _____ DATE _____
APPROVED BY _____ DATE _____

E-SHEET NAME:



COUNTY OF	ITEM NO.	SHEET NO.
CAMPBELL	6-8105	R4

CHECKED BY _____ DATE _____
 APPROVED BY _____ DATE _____



E-SHEET NAME:

807.5	797.63	795.1	800.02	780.0	802.22	774.6	804.25	788.0	806.11	801.8	807.79	814.0	809.30	824.6	810.63	832.3	811.79	837.0	812.77	840.1	813.58	843.0	814.33	845.5	815.08	846.7	815.83	845.8	816.58	842.9	817.33	838.9	818.08	821.5	818.83	818.6	819.58	821.3	820.33	834.7	821.08	848.3	821.83	848.6	822.58	847.9	823.33	846.3	824.08	846.2	824.83	847.2	825.58
191+00	192+00	193+00	194+00	195+00	196+00	197+00	198+00	199+00	200+00	201+00	202+00	203+00	204+00	205+00	206+00	207+00																																					

833.8	826.33	827.6	827.08	828.4	827.83	829.2	828.58	830.0	829.33	830.3	830.08
205+00	206+00	207+00									

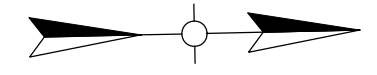
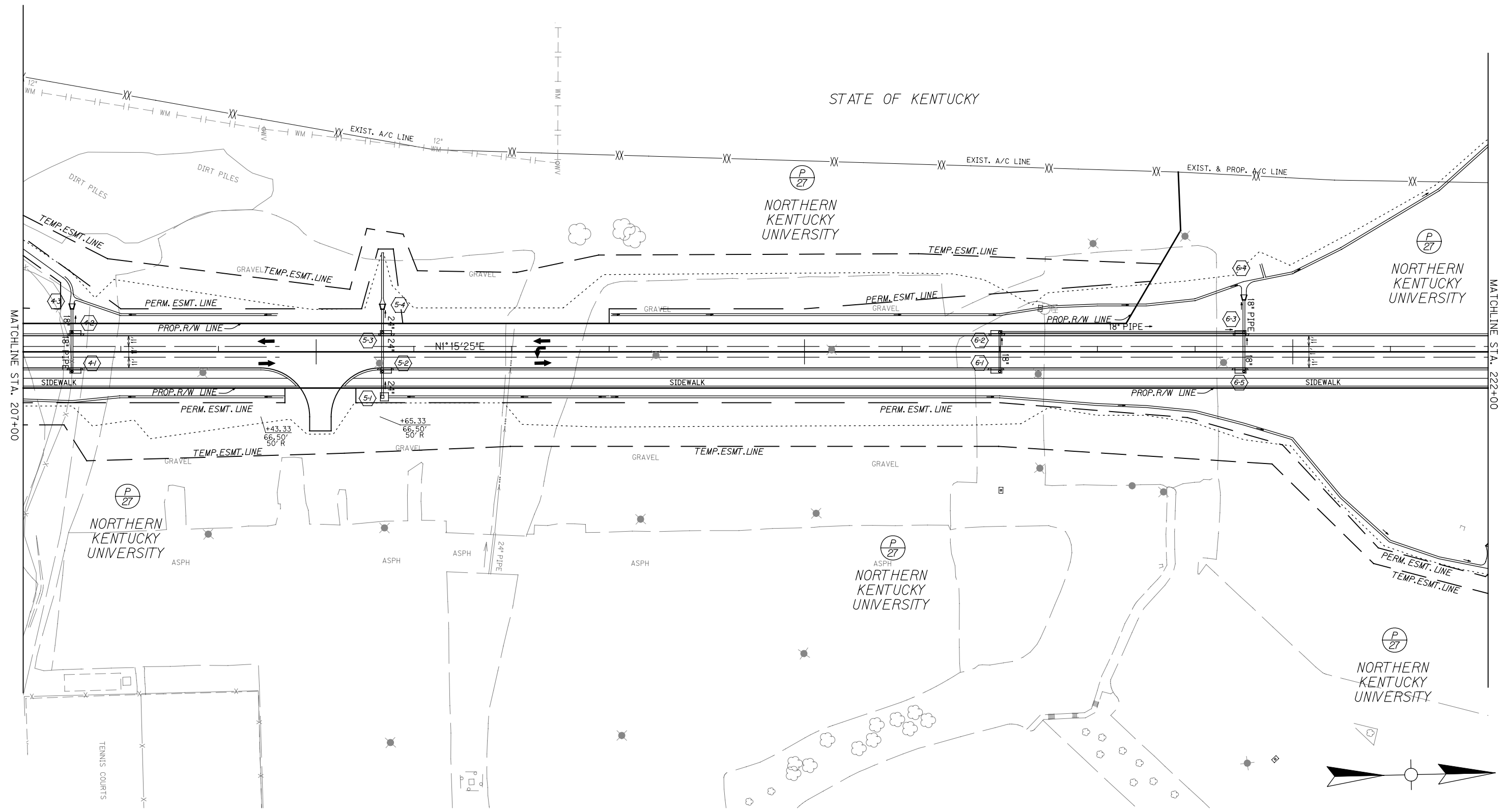
COUNTY OF	ITEM NO.	SHEET NO.
CAMPBELL	6-8105	R5

210+00

215+00

220+00

CHECKED BY _____ DATE _____
 APPROVED BY _____ DATE _____



SCALE: 1"=50'

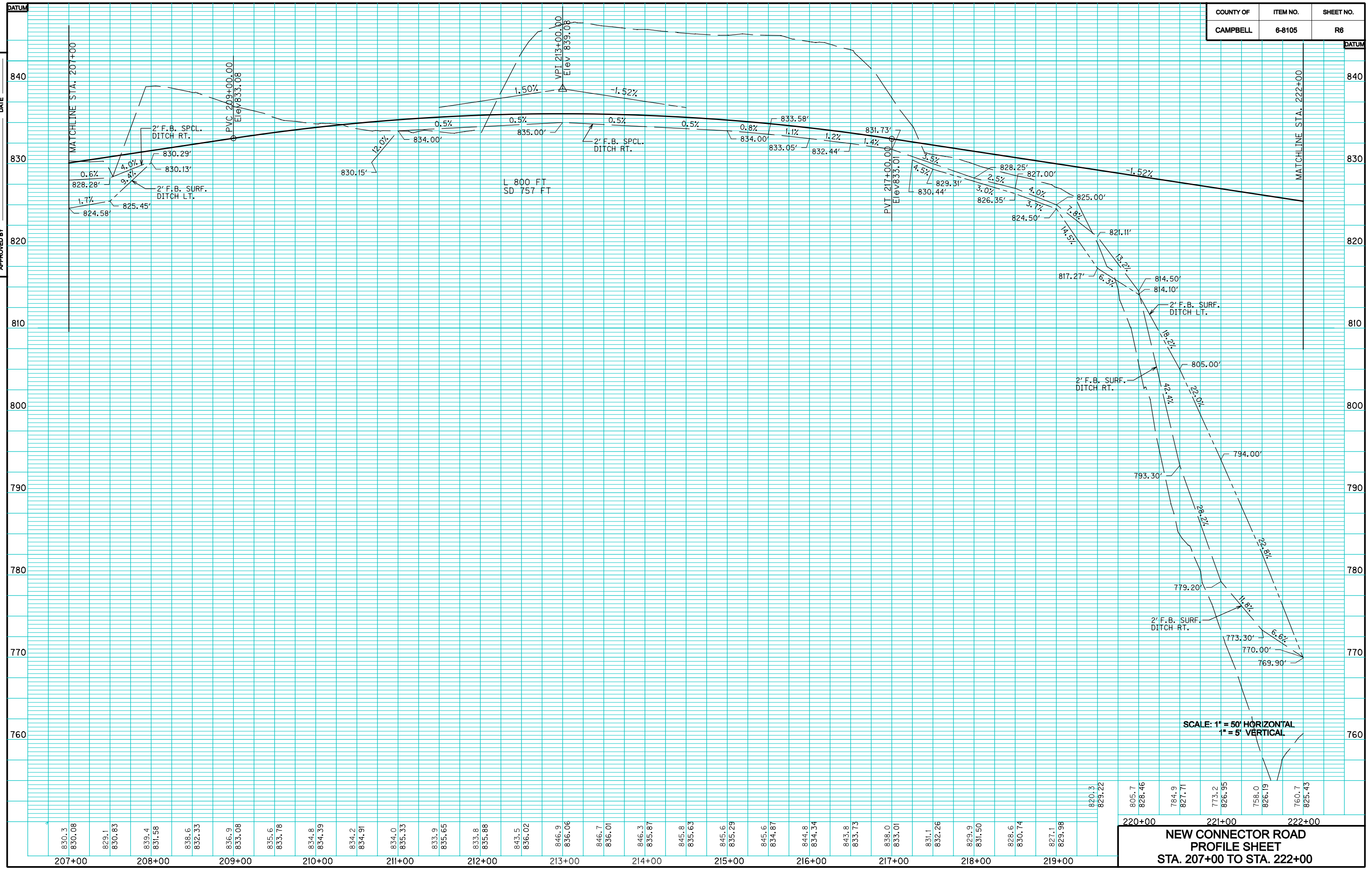
**NEW CONNECTOR ROAD
 PLAN SHEET
 STA. 207+00 TO STA. 222+00**

E-SHEET NAME:

COUNTY OF	ITEM NO.	SHEET NO.
CAMPBELL	6-8105	R6

E-SHEET NAME:

CHECKED BY _____
APPROVED BY _____
DATE _____
DATE _____



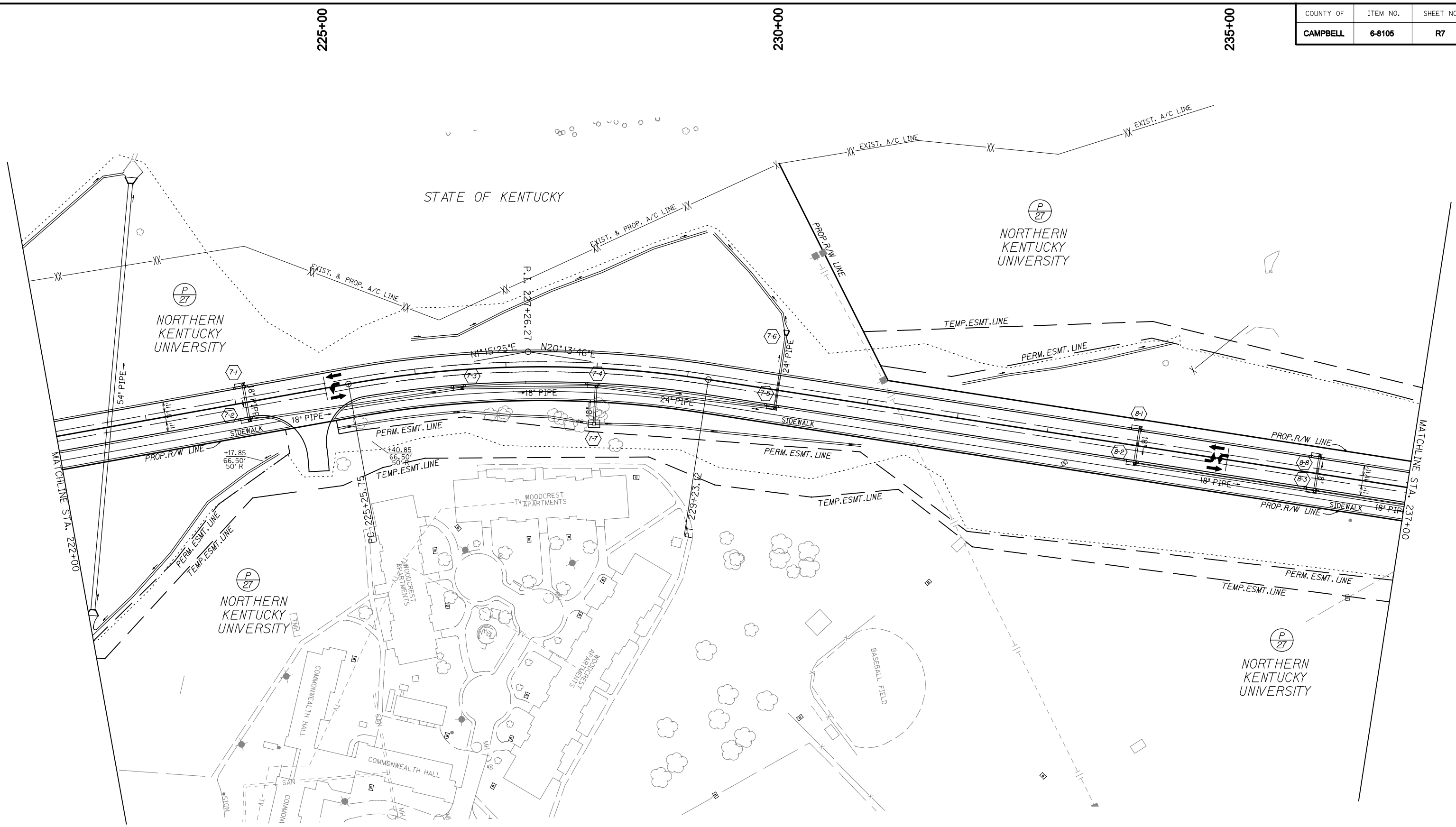
820.3	829.22	805.7	828.46	784.9	827.71	773.2	826.95	758.0	826.19	760.7	825.43
-------	--------	-------	--------	-------	--------	-------	--------	-------	--------	-------	--------

220+00 221+00 222+00

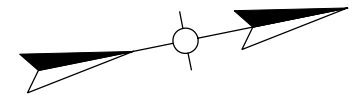
**NEW CONNECTOR ROAD
PROFILE SHEET
STA. 207+00 TO STA. 222+00**

COUNTY OF	ITEM NO.	SHEET NO.
CAMPBELL	6-8105	R7

CHECKED BY _____ DATE _____
APPROVED BY _____ DATE _____



P.I. STA. 227+26.27
 $\Delta = 18^{\circ}58'21.56''RT$
 $T = 200.52'$
 $L = 397.36'$
 $R = 1200.00'$
 $E = 16.64'$
 $e = 5.00\%$



SCALE: 1"=50'

**NEW CONNECTOR ROAD
PLAN SHEET
STA. 222+00 TO STA. 237+00**

E-SHEET NAME:



CHECKED BY _____ DATE _____
 APPROVED BY _____ DATE _____
 E-SHEET NAME:

SCALE: 1" = 50' HORIZONTAL
 1" = 5' VERTICAL

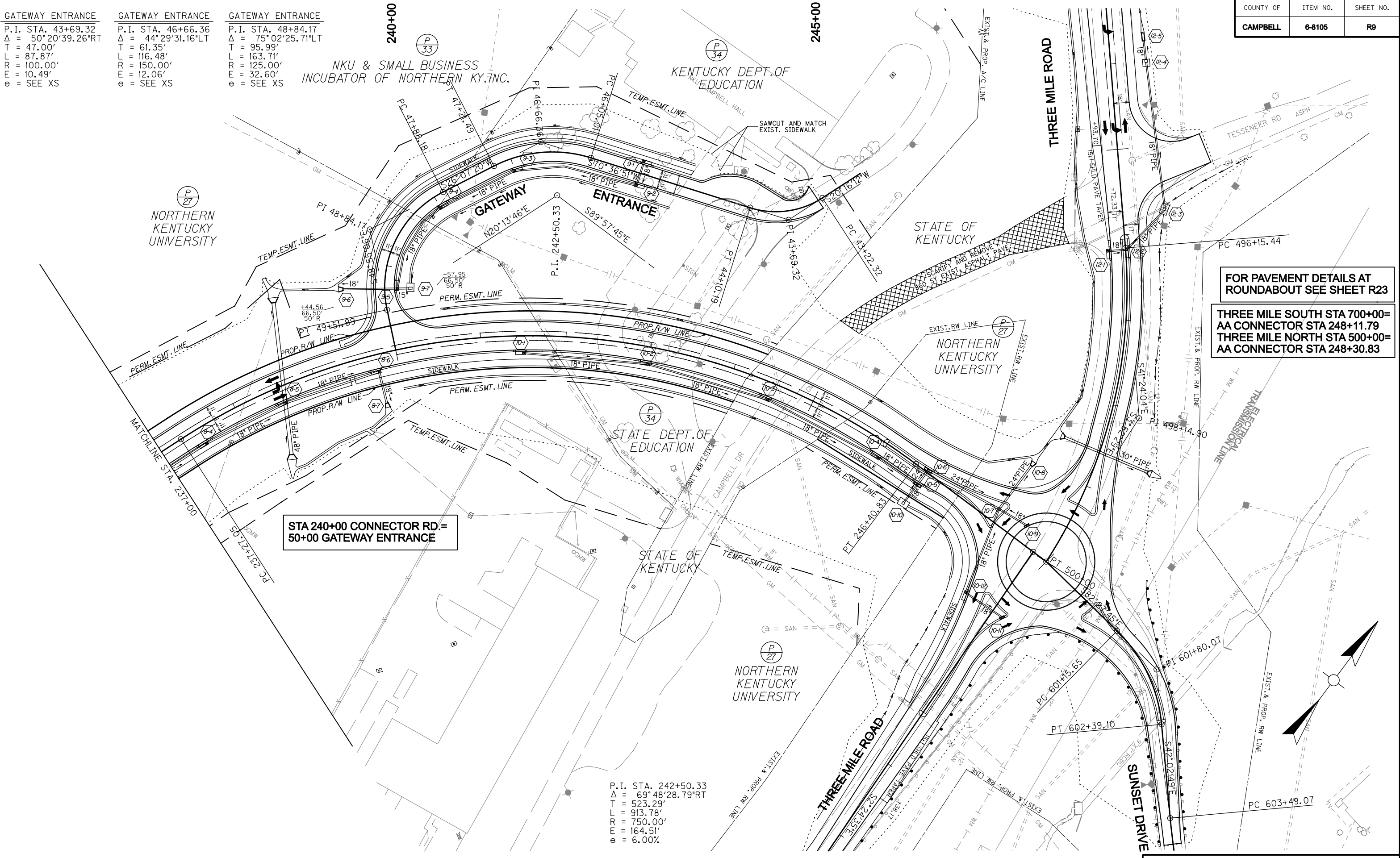
760.7	769.7	782.1	794.7	805.0	815.8	824.9	830.5	829.3	822.0	813.9	802.9	800.2	800.7	806.9	812.8	819.9	823.4	823.9	821.2	816.7	806.7	792.6	790.8	792.1	752.8	814.82	792.4	792.6	791.6	790.8	790.1
825.43	824.67	823.91	823.18	822.50	821.87	821.29	820.76	820.28	819.85	819.47	819.15	818.87	818.62	818.37	818.12	817.87	817.62	817.37	817.12	816.87	816.62	816.37	816.01	815.50	814.82	813.98	812.99	811.83	810.51	809.03	
222+00	223+00	224+00	225+00	226+00	227+00	228+00	229+00	230+00	231+00	232+00	233+00	234+00															235+00	236+00	237+00		

**NEW CONNECTOR ROAD
 PROFILE SHEET
 STA. 222+00 TO STA. 237+00**

COUNTY OF	ITEM NO.	SHEET NO.
CAMPBELL	6-8105	R9

GATEWAY ENTRANCE	GATEWAY ENTRANCE	GATEWAY ENTRANCE
P.I. STA. 43+69.32	P.I. STA. 46+66.36	P.I. STA. 48+84.17
$\Delta = 50^{\circ}20'39.26^{\circ}RT$	$\Delta = 44^{\circ}29'31.16^{\circ}LT$	$\Delta = 75^{\circ}02'25.71^{\circ}LT$
T = 47.00'	T = 61.35'	T = 95.99'
L = 87.87'	L = 116.48'	L = 163.71'
R = 100.00'	R = 150.00'	R = 125.00'
E = 10.49'	E = 12.06'	E = 32.60'
e = SEE XS	e = SEE XS	e = SEE XS

CHECKED BY _____ DATE _____
APPROVED BY _____ DATE _____



STA 240+00 CONNECTOR RD.=
50+00 GATEWAY ENTRANCE

FOR PAVEMENT DETAILS AT
ROUNDBOUT SEE SHEET R23

THREE MILE SOUTH STA 700+00=
AA CONNECTOR STA 248+11.79
THREE MILE NORTH STA 500+00=
AA CONNECTOR STA 248+30.83

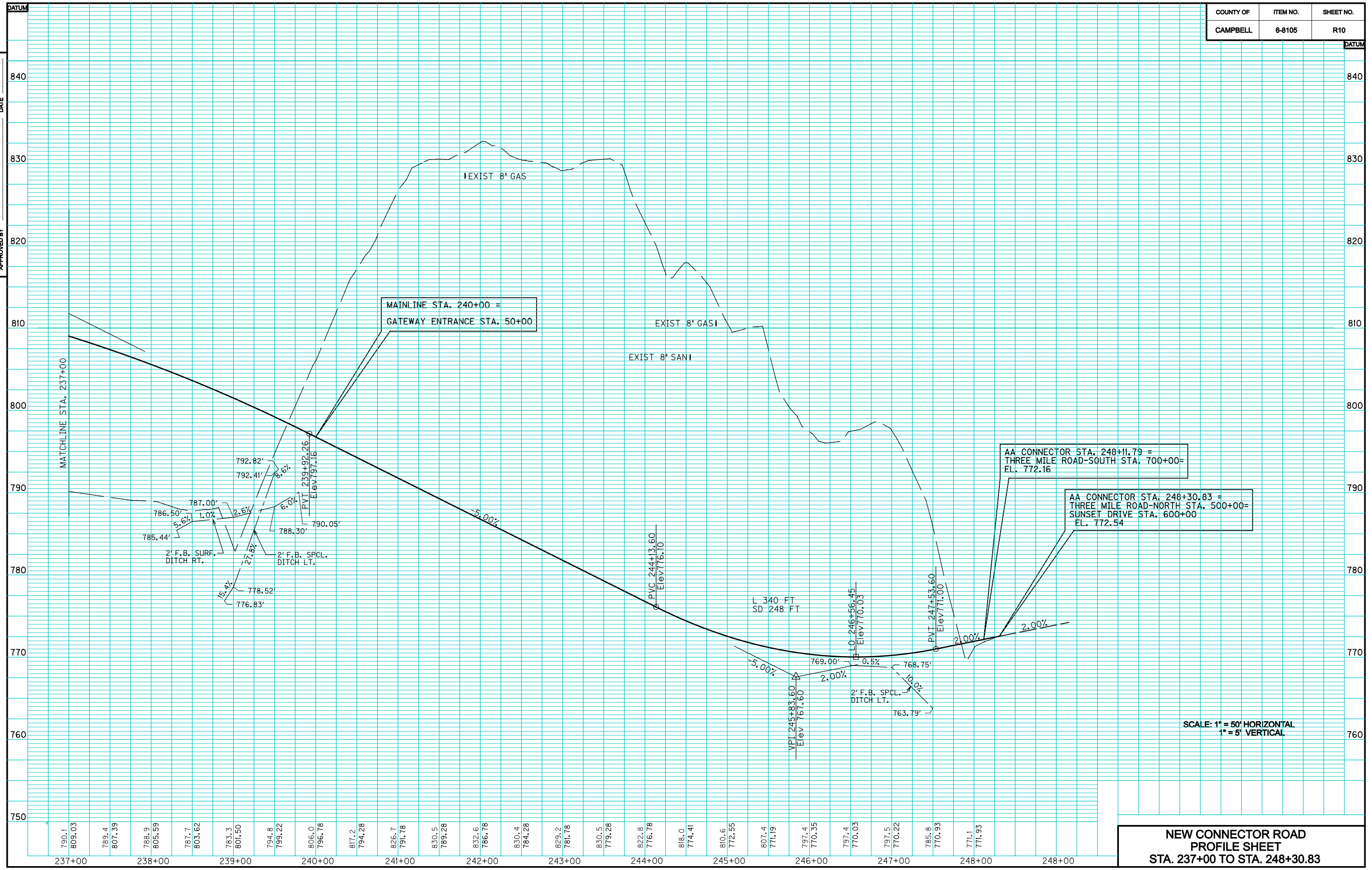
P.I. STA. 242+50.33
$\Delta = 69^{\circ}48'28.79^{\circ}RT$
T = 523.29'
L = 913.78'
R = 750.00'
E = 164.51'
e = 6.00'

SCALE: 1"=50'

NEW CONNECTOR ROAD
PLAN SHEET
STA. 237+00 TO STA. 248+30.83

E-SHEET NAME:

COUNTY OF	ITEM NO.	SHEET NO.
CAMPBELL	6-8105	R10

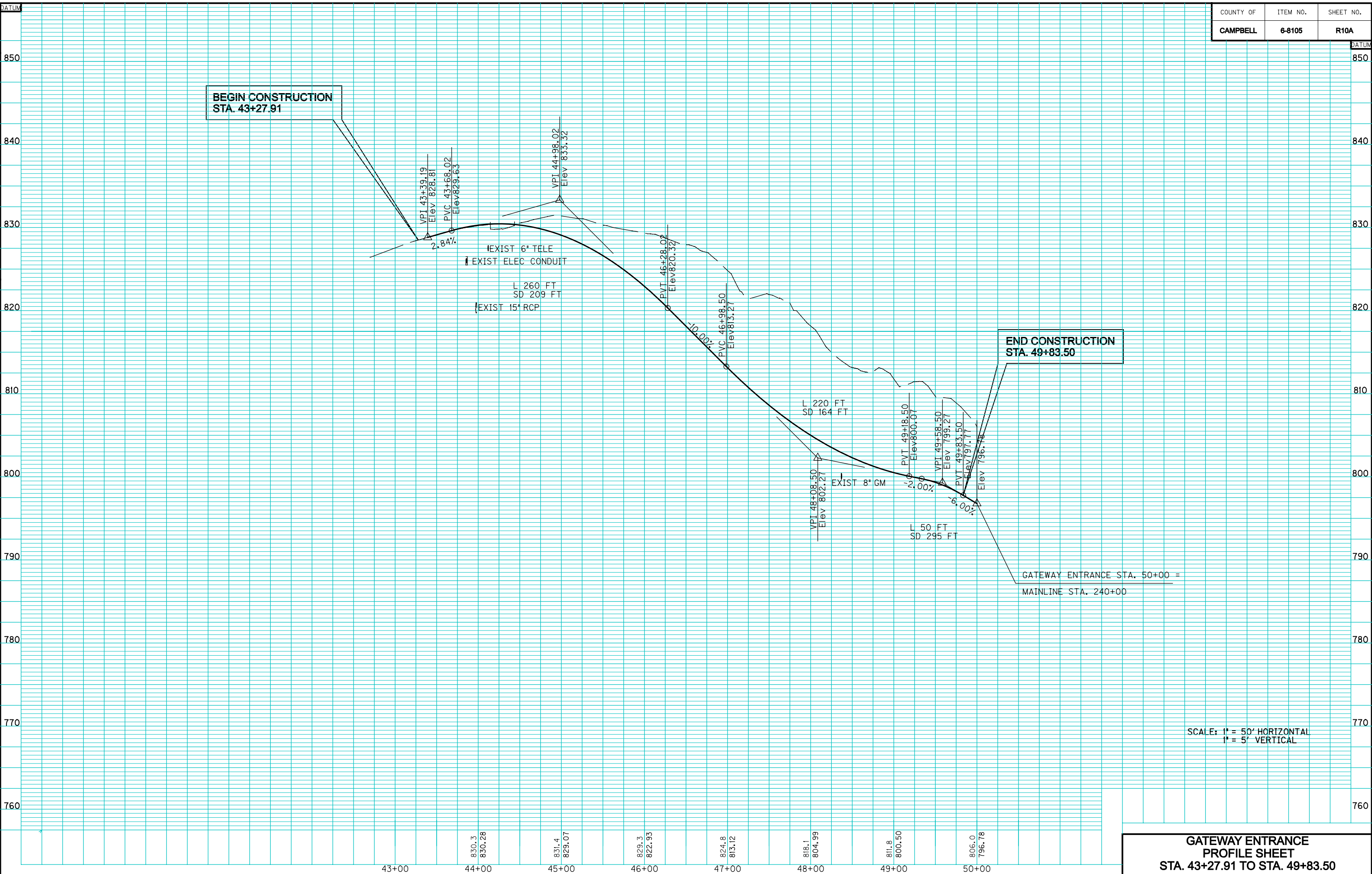


CHECKED BY _____ DATE _____
 APPROVED BY _____ DATE _____

E-SHEET NAME:

SCALE: 1" = 50' HORIZONTAL
 1" = 5' VERTICAL

**NEW CONNECTOR ROAD
 PROFILE SHEET
 STA. 237+00 TO STA. 248+30.83**



SCALE: 1" = 50' HORIZONTAL
1" = 5' VERTICAL

**GATEWAY ENTRANCE
PROFILE SHEET
STA. 43+27.91 TO STA. 49+83.50**

CHECKED BY _____ DATE _____
 APPROVED BY _____ DATE _____
 E-SHEET NAME: _____

400+00

405+00

410+00

JOHNS HILL ROAD	JOHNS HILL ROAD	JOHNS HILL ROAD
P.I. STA. 397+10.72	P.I. STA. 406+15.31	P.I. STA. 413+40.81
$\Delta = 44^{\circ}06'40''RT$	$\Delta = 59^{\circ}21'20''LT$	$\Delta = 10^{\circ}12'51.44''RT$
T = 336.37'	T = 370.42'	T = 178.75'
L = 639.18'	L = 673.37'	L = 356.55'
R = 830.22'	R = 650.00'	R = 2000.00'
E = 65.55'	E = 98.14'	E = 7.97'
e = 6.00%	e = NC	e = NC

BEGIN CONSTRUCTION
MATCH EXIST. BRIDGE END
STA. 398+82.76

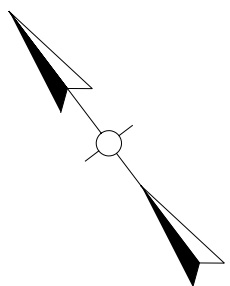
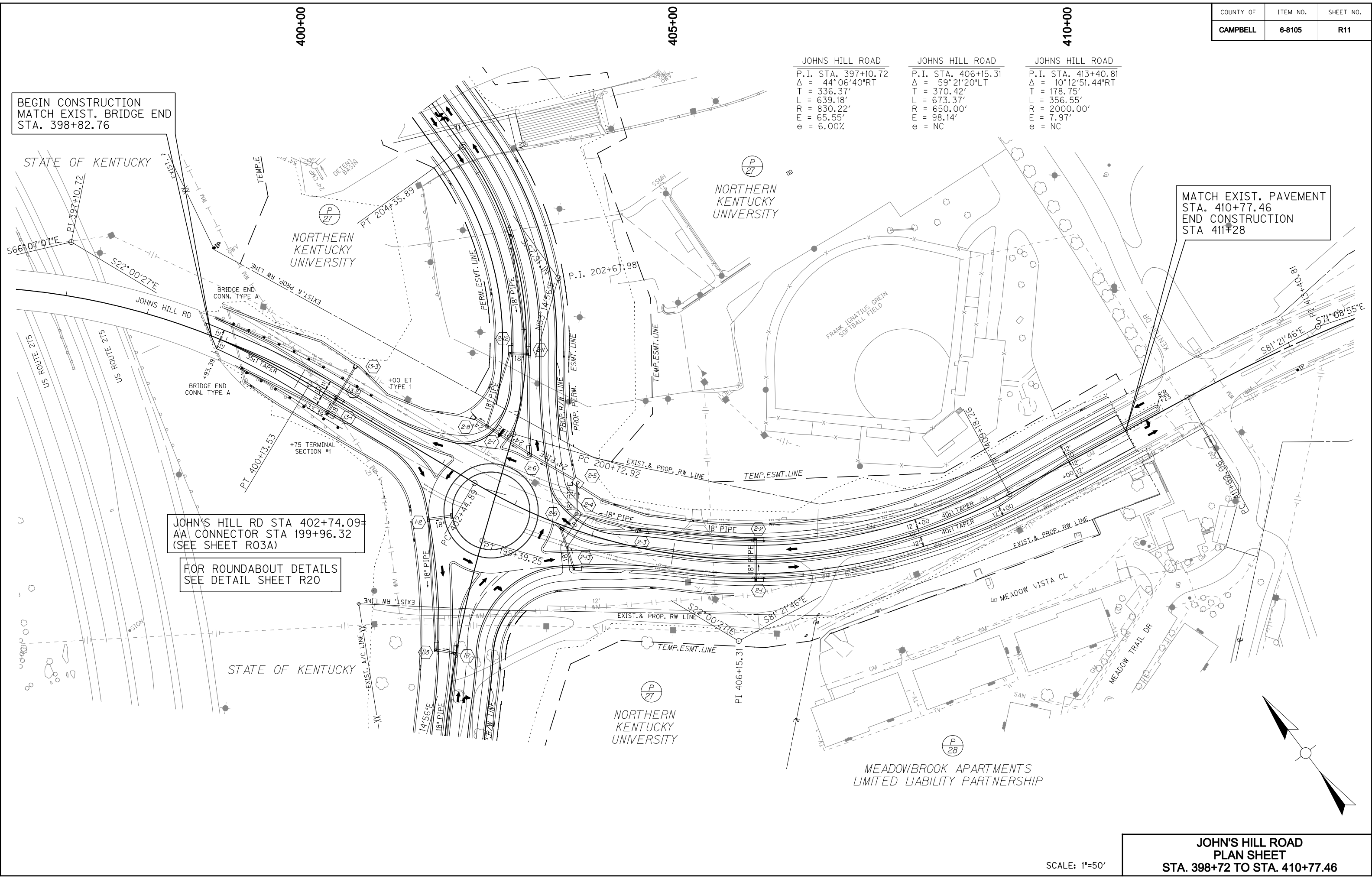
MATCH EXIST. PAVEMENT
STA. 410+77.46
END CONSTRUCTION
STA. 411+28

JOHN'S HILL RD STA 402+74.09
AA CONNECTOR STA 199+96.32
(SEE SHEET R03A)

FOR ROUNDABOUT DETAILS
SEE DETAIL SHEET R20

CHECKED BY _____ DATE _____
APPROVED BY _____ DATE _____

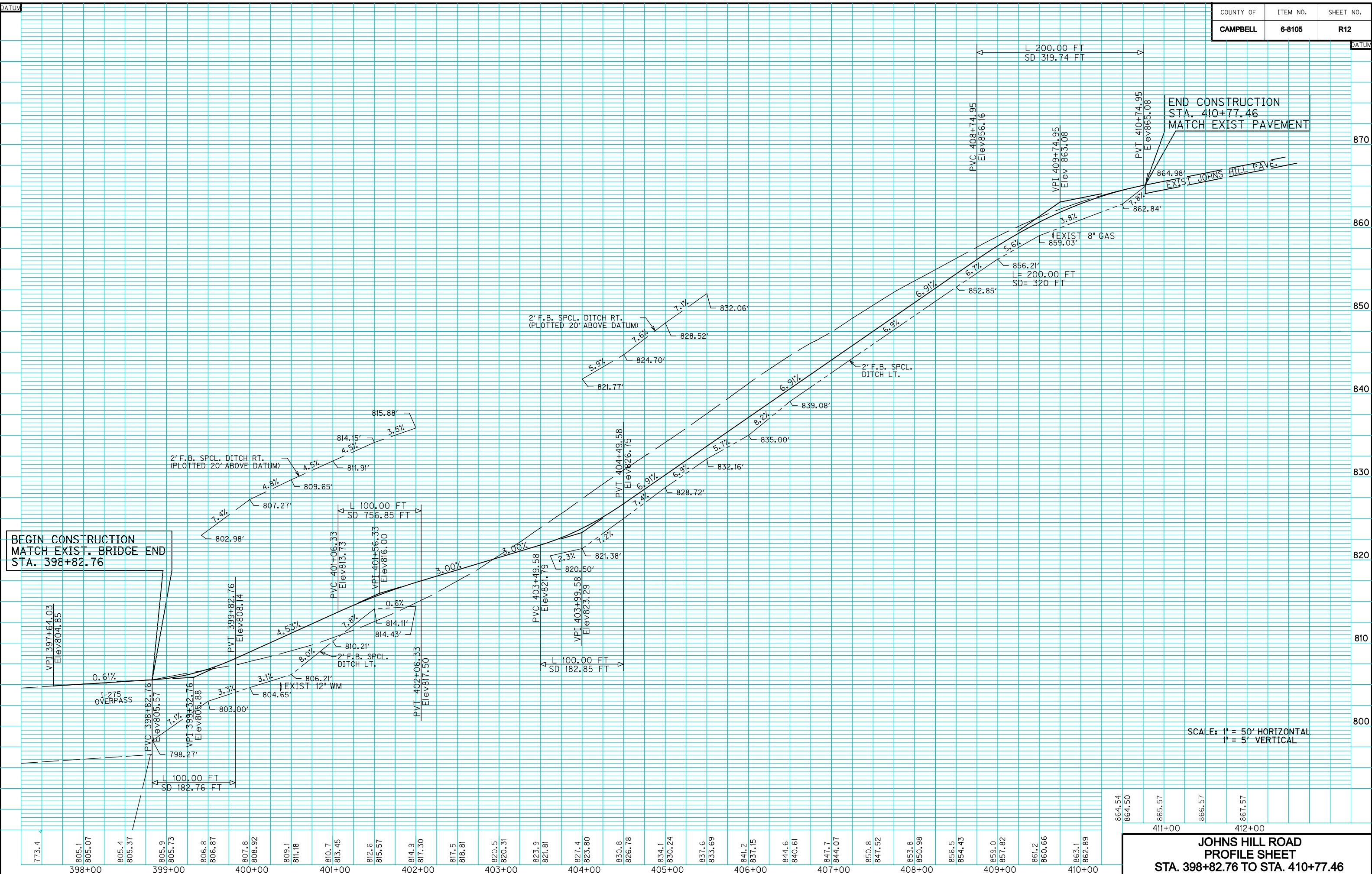
E-SHEET NAME:



**JOHN'S HILL ROAD
PLAN SHEET
STA. 398+72 TO STA. 410+77.46**

SCALE: 1"=50'

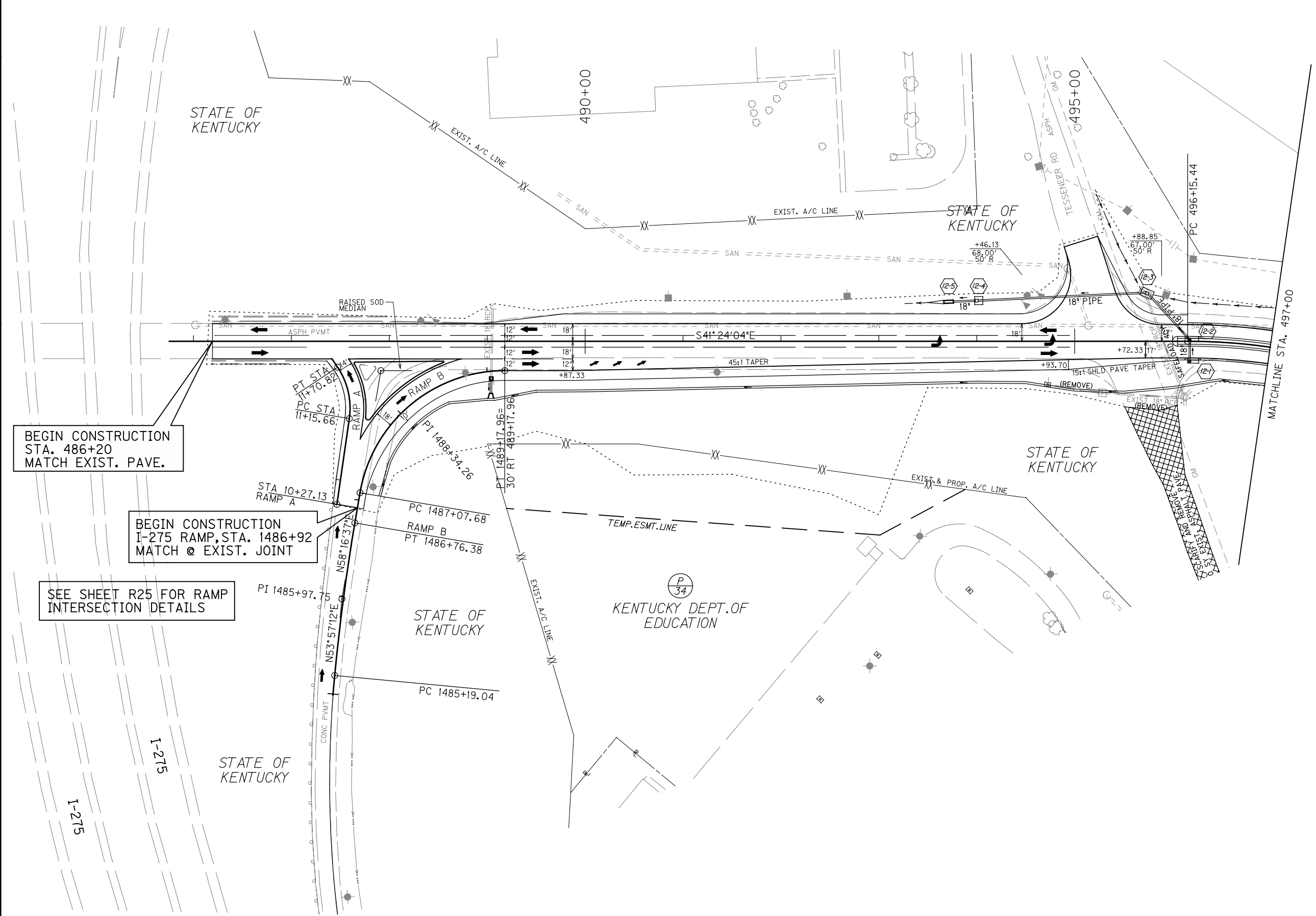
CHECKED BY _____ DATE _____
APPROVED BY _____ DATE _____



E-SHEET NAME:

864.54		
864.50		
865.57	411+00	
866.57		
867.57	412+00	

CHECKED BY _____ DATE _____
 APPROVED BY _____ DATE _____

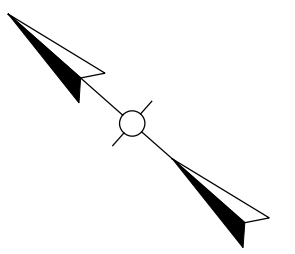


BEGIN CONSTRUCTION
 STA. 486+20
 MATCH EXIST. PAVE.

BEGIN CONSTRUCTION
 I-275 RAMP, STA. 1486+92
 MATCH @ EXIST. JOINT

SEE SHEET R25 FOR RAMP
 INTERSECTION DETAILS

I-275 RAMP 'B'	I-275 RAMP 'B'	I-275 RAMP 'A'
P.I. STA. 1485+97.75	P.I. STA. 1488+34.26	P.I. STA. 11+44.55
$\Delta = 4^{\circ}19'25.13''$	$\Delta = 80^{\circ}19'18.73''$	$\Delta = 42^{\circ}08'20''$
T = 78.71	T = 126.58	T = 28.89'
L = 157.34	L = 210.28	L = 55.16'
R = 2085.00	R = 150.00	R = 75.00'
E = 1.49	E = 46.27	E = 5.37'
e = SEE SHEET R25	e = SEE SHEET R25	e = SEE SHEET R25



**THREE MILE ROAD - NORTH
 PLAN SHEET
 STA. 486+20 TO STA. 497+00**

SCALE: 1"=50'

E-SHEET NAME:

THREE MILE RD.-NORTH

P.I. STA. 498+14.90
Δ = 37°31'35.02"RT
T = 199.46'
L = 384.56'
R = 587.16'
E = 32.96'
e = SEE X-SECTIONS

THREE MILE RD.-SOUTH

P.I. STA. 709+28.65
Δ = 41°30'13.95"LT
T = 441.51'
L = 844.07'
R = 1165.23'
E = 80.84'
e = SEE SHT. R23

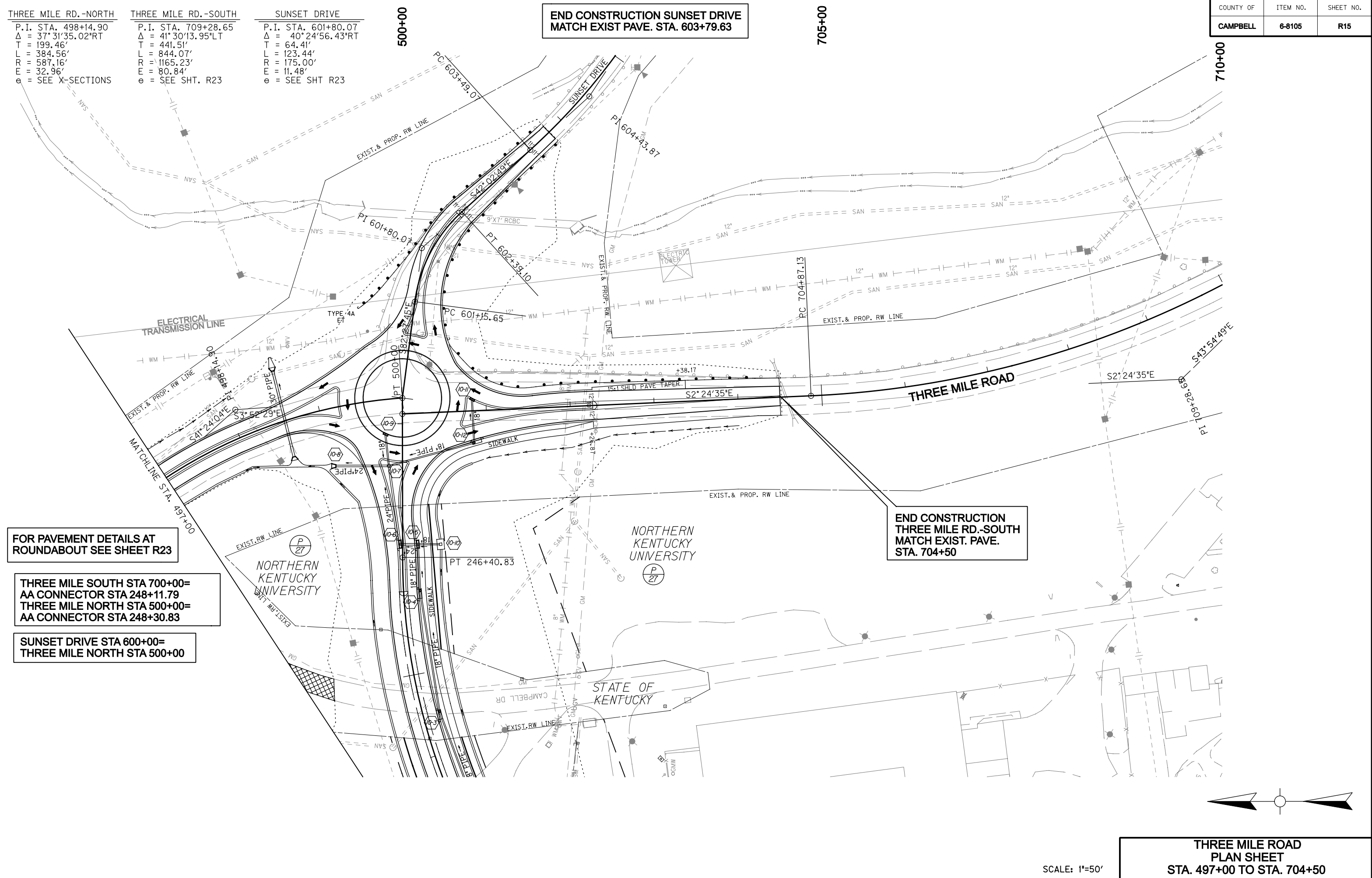
SUNSET DRIVE

P.I. STA. 601+80.07
Δ = 40°24'56.43"RT
T = 64.41'
L = 123.44'
R = 175.00'
E = 11.48'
e = SEE SHT R23

END CONSTRUCTION SUNSET DRIVE
MATCH EXIST PAVE. STA. 603+79.63

COUNTY OF	ITEM NO.	SHEET NO.
CAMPBELL	6-8105	R15

CHECKED BY _____ DATE _____
APPROVED BY _____ DATE _____



FOR PAVEMENT DETAILS AT
ROUNDBOUT SEE SHEET R23

THREE MILE SOUTH STA 700+00=
AA CONNECTOR STA 248+11.79
THREE MILE NORTH STA 500+00=
AA CONNECTOR STA 248+30.83

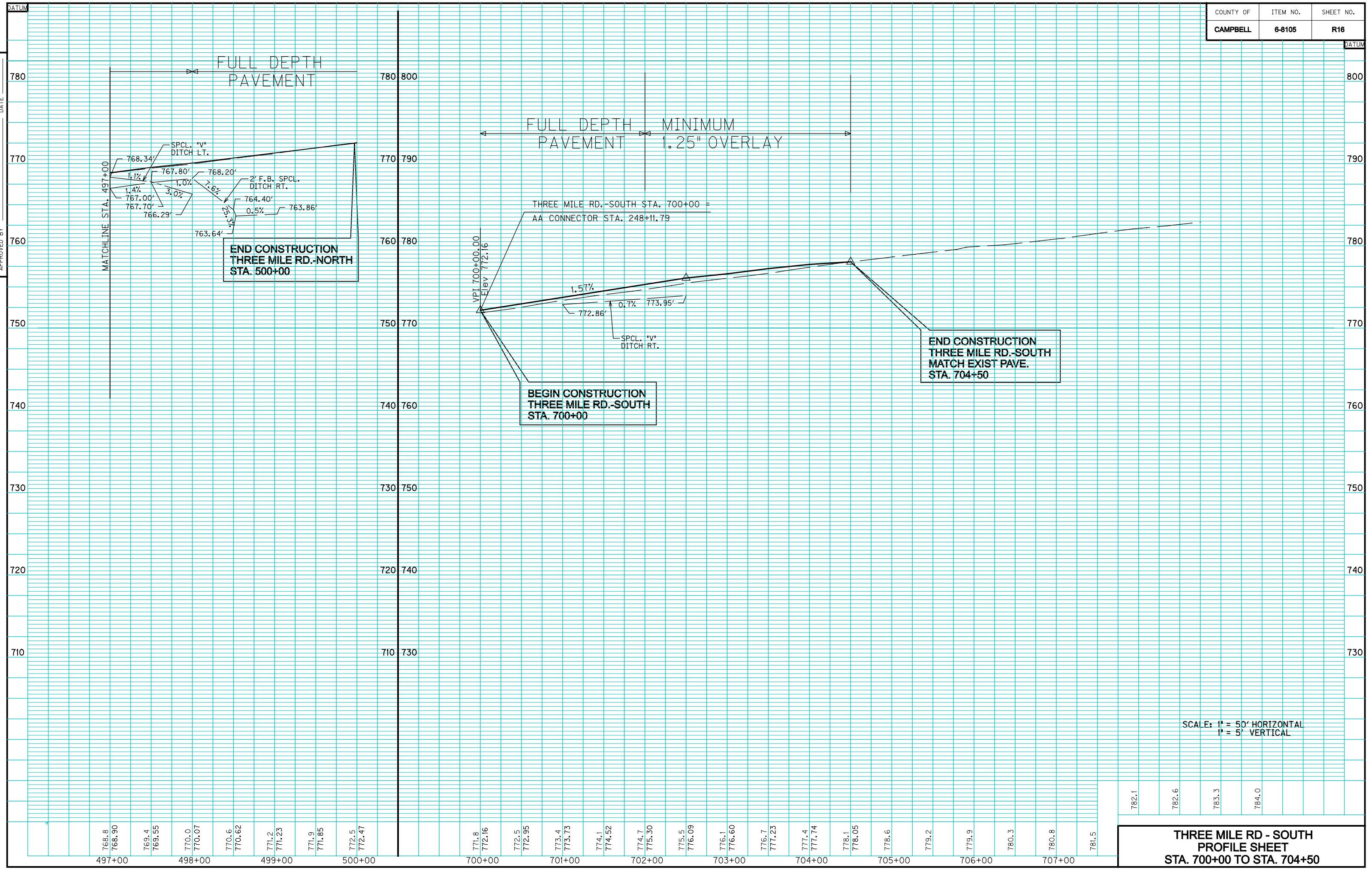
SUNSET DRIVE STA 600+00=
THREE MILE NORTH STA 500+00

END CONSTRUCTION
THREE MILE RD.-SOUTH
MATCH EXIST. PAVE.
STA. 704+50

THREE MILE ROAD
PLAN SHEET
STA. 497+00 TO STA. 704+50

SCALE: 1"=50'

E-SHEET NAME:

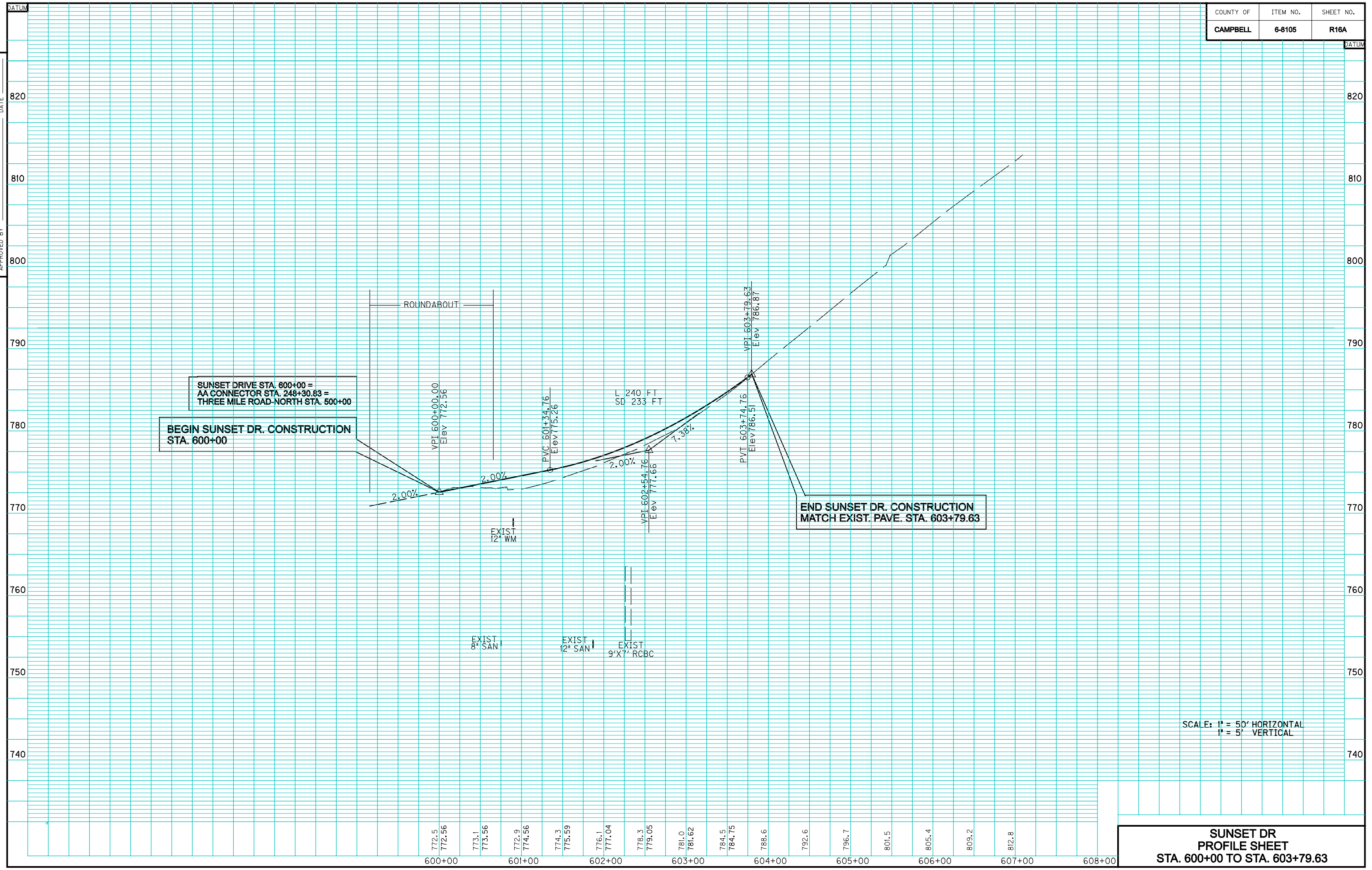


CHECKED BY _____ DATE _____
 APPROVED BY _____ DATE _____

E-SHEET NAME:

SCALE: 1" = 50' HORIZONTAL
 1" = 5' VERTICAL

782.1	782.6	783.3	784.0
THREE MILE RD - SOUTH PROFILE SHEET STA. 700+00 TO STA. 704+50			



E-SHEET NAME: