

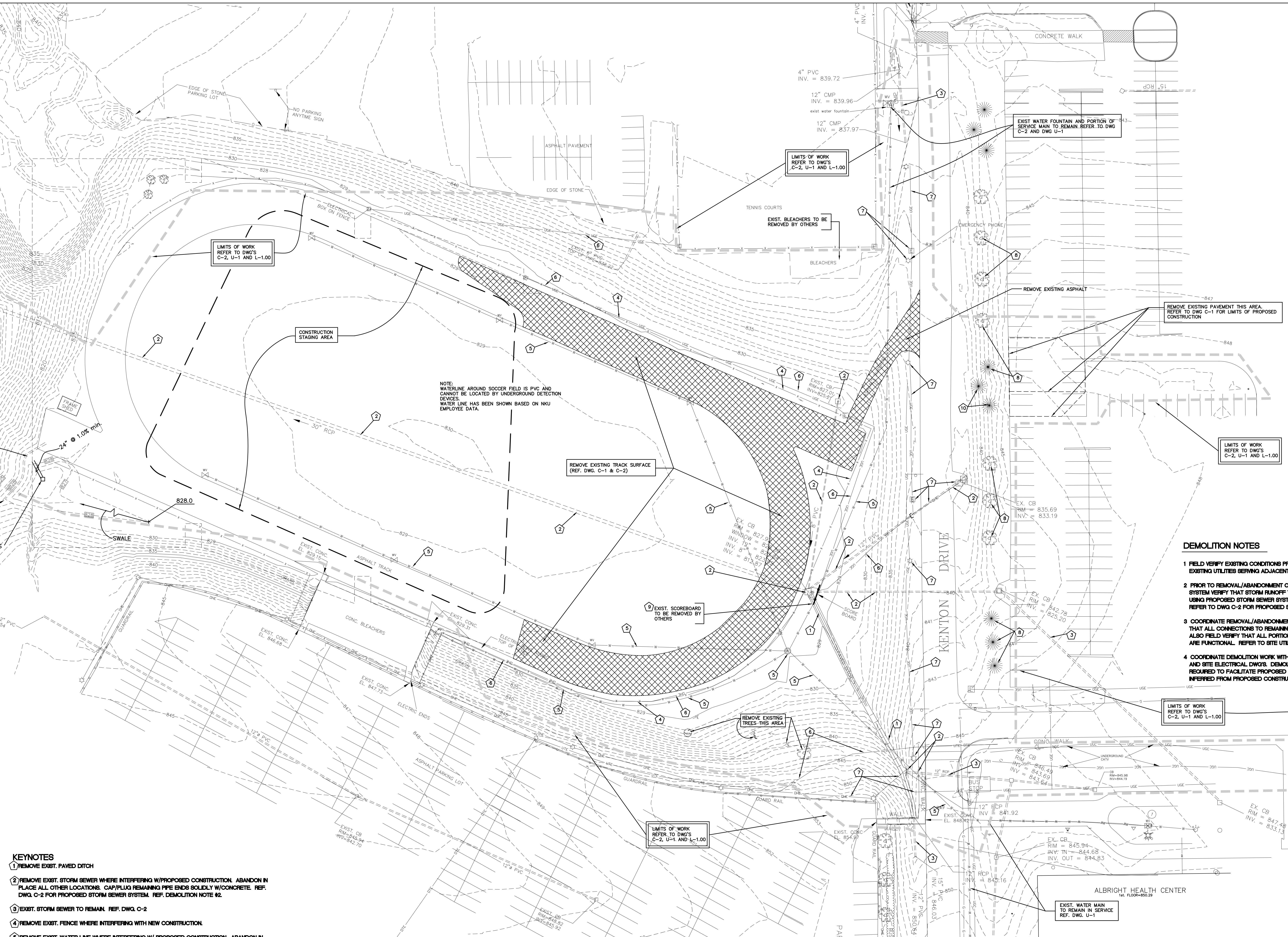
LEGEND	
—O—	OVERHEAD ELECTRIC
—U—	UNDERGROUND ELECTRIC
□	ELECTRIC BOX
⊙	ELECTRIC MANHOLE
⊙	ANCHOR POLE
⊙	LIGHT POLE
⊙	UTILITY POLE
⊙	GROUND LIGHT
—O—	OVERHEAD TELEPHONE
—U—	UNDERGROUND TELEPHONE
□	TELEPHONE BOX
⊙	TELEPHONE MANHOLE
•	BOLLARDS
—	SIGN
□	MAIL BOX
—	WATER LINE
—	WATER VALVE
—	FIRE HYDRANT
—	WATER METER
—	WATER VALVE BOX
—	WATER VALVE MANHOLE
—	POST INDICATOR VALVE
—	GAS LINE
—	GAS METER
—	GAS VALVE
—	GAS VALVE BOX
—	UTILITY MANHOLE
—	SEWER MANHOLE
—	STORM MANHOLE
—	DITCH OR CREEK
—	GUARDRAIL
—	FENCE LINE
—	R/W FENCE LINE

THE CITY OF KENTUCKY UNDERGROUND PROTECTION, INC.
1-800-752-6007

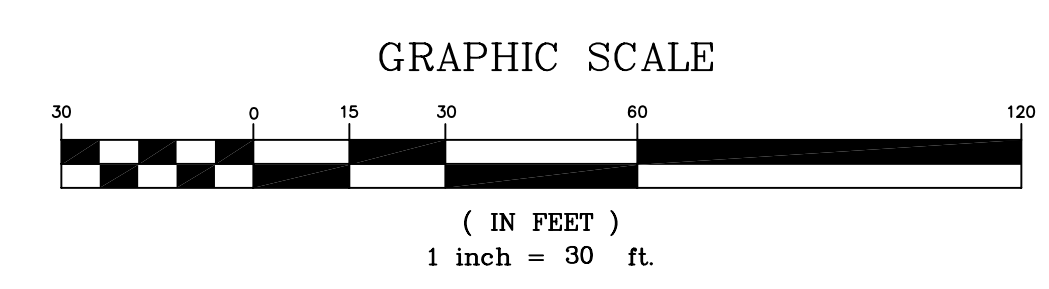
NOTE:
EXISTING UTILITIES ON AND ADJACENT TO PROJECT AREA ARE PRIVATE. CONTRACTOR IS RESPONSIBLE FOR LOCATING AND MARKING EXISTING UTILITIES PRIOR TO AND DURING CONSTRUCTION.

DEMOLITION NOTES

- 1 FIELD VERIFY EXISTING CONDITIONS PRIOR TO CONSTRUCTION MAINTAIN + PROTECT ALL EXISTING UTILITIES SERVING ADJACENT FACILITIES.
- 2 PRIOR TO REMOVAL/ABANDONMENT OF ANY PORTION OF EXISTING STORM SEWER SYSTEM VERIFY THAT STORM RUNOFF THROUGH SITE IS MAINTAINED AT ALL TIMES USING PROPOSED STORM SEWER SYSTEM AND/OR ANY TEMPORARY MEASURES REQUIRED. REFER TO DWG C-2 FOR PROPOSED STORM SYSTEM.
- 3 COORDINATE REMOVAL/ABANDONMENT OF EXISTING WATER WITH THE UNIVERSITY. FIELD VERIFY THAT ALL CONNECTIONS TO REMAINING ACTIVE WATER SYSTEM ARE VALVED SHUT + PLUGGED. ALSO FIELD VERIFY THAT ALL PORTIONS OF WATER SYSTEM REQUIRED TO STAY IN OPERATION ARE FUNCTIONAL. REFER TO SITE UTILITY PLAN, DWG. U-1.
- 4 COORDINATE DEMOLITION WORK WITH PROPOSED CONSTRUCTION INDICATED ON DWGS. C-1, C-2 AND SITE ELECTRICAL DWGS. DEMOLITION INCLUDES REMOVAL OF ALL EXISTING IMPROVEMENTS REQUIRED TO FACILITATE PROPOSED CONSTRUCTION WHETHER INDICATED ON THIS DRAWING OR INFERRED FROM PROPOSED CONSTRUCTION INDICATED ELSEWHERE IN THESE PLANS.



- KEYNOTES**
- 1 REMOVE EXIST. PAVED DITCH
 - 2 REMOVE EXIST. STORM SEWER WHERE INTERFERING W/PROPOSED CONSTRUCTION. ABANDON IN PLACE ALL OTHER LOCATIONS. CAP/PLUG REMAINING PIPE ENDS SOLIDLY W/CONCRETE. REF. DWG. C-2 FOR PROPOSED STORM SEWER SYSTEM. REF. DEMOLITION NOTE #2.
 - 3 EXIST. STORM SEWER TO REMAIN. REF. DWG. C-2
 - 4 REMOVE EXIST. FENCE WHERE INTERFERING WITH NEW CONSTRUCTION.
 - 5 REMOVE EXIST. WATER LINE WHERE INTERFERING W/ PROPOSED CONSTRUCTION. ABANDON IN PLACE ALL OTHER LOCATIONS. REF. DEMOLITION NOTE #3
 - 6 REMOVE EXIST. ELECTRIC WHERE ABOVE GROUND OR INTERFERING WITH PROPOSED CONSTRUCTION. ABANDON IN PLACE ALL OTHER LOCATIONS. CAUTION: VERIFY WITH UNIVERSITY + BY FIELD TESTING THAT LINES ARE NOT ENERGIZED PRIOR TO PROCEEDING WITH THIS WORK. REFER TO SITE UTILITY PLAN, DWG. U-1, PRIOR TO COMMENCING WITH THIS WORK.
 - 7 REFER TO SITE UTILITY PLAN, DWG. U-1.
 - 8 EXISTING TREE TO REMAIN.
 - 9 REMOVE REMAINING SCOREBOARD SUPPORT STRUCTURE(S)
 - 10 EXIST. TREE TO REMAIN (BASE BID), EXISTING TREE TO BE REMOVED (ADD ALTERNATE No. 0).



RECORD DRAWING

REVISIONS	DATE	BID PACKAGE	ISSUED
1	ADDENDUM No. 1		12/22/02
2	RECORD DWG.		4/09/06
3			
4			
5			
6			
7			
8			

RECORD DATE: 4/09/06 DRAWN BY: GEG CHECKED BY: SAJ A&E FILE NO.: SCALE: 1" = 30" DATE: 10-30-2003	PARKING GARAGE NO. 2 NORTHERN KENTUCKY UNIVERSITY HIGHLAND HEIGHTS, KENTUCKY SITE DEMOLITION PLAN COMMONWEALTH OF KENTUCKY FINANCE AND ADMINISTRATION CABINET DEPARTMENT FOR FACILITIES MANAGEMENT DIVISION OF ENGINEERING FRANKFORT, KENTUCKY	DRAWING NO.: C-0 REVIEWED: DIV. OF ENGR. ENGR. FILE NO.: PNU0590
--	---	---

ALBRIGHT HEALTH CENTER 1st FLOOR-850.29 EXIST. WATER MAIN TO REMAIN IN SERVICE REF. DWG. U-1	Champlin/Haupt Inc. Architects 302 Farmington Drive, #4, 101 Lexington, KY 40502 Tel: (606) 331-5999 Fax: (606) 331-5996
---	--

H:\SSD\PROJ\014621\1314621.dwg Apr 06, 2006 - 9:02am - C:\Champlin\Haupt - Krenson