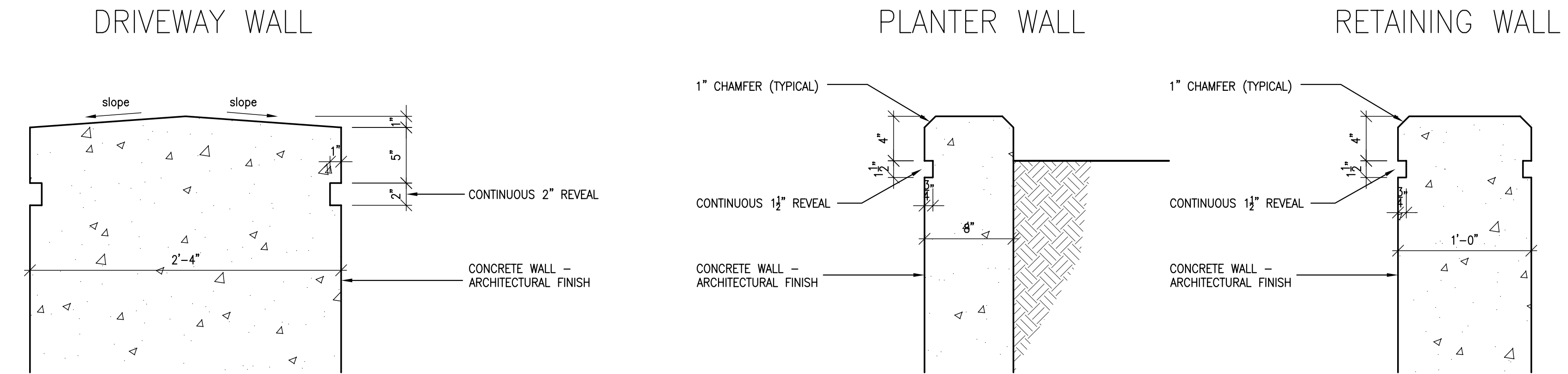


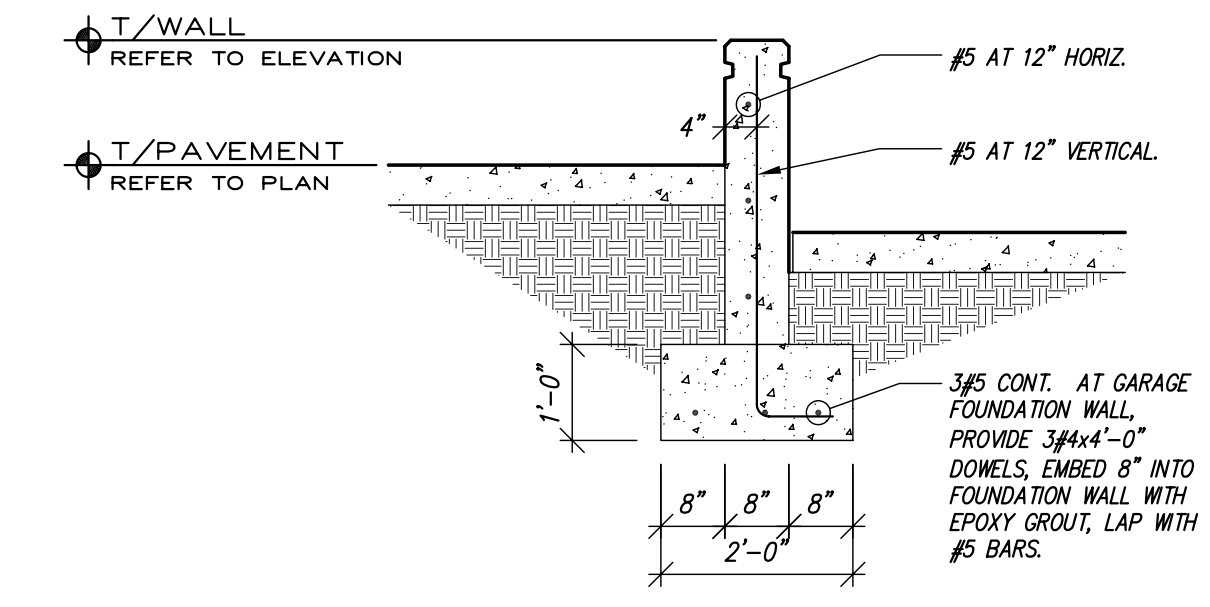
1 SOUTH PEDESTRIAN ENTRANCE SECTION

1/2" = 1'-0"



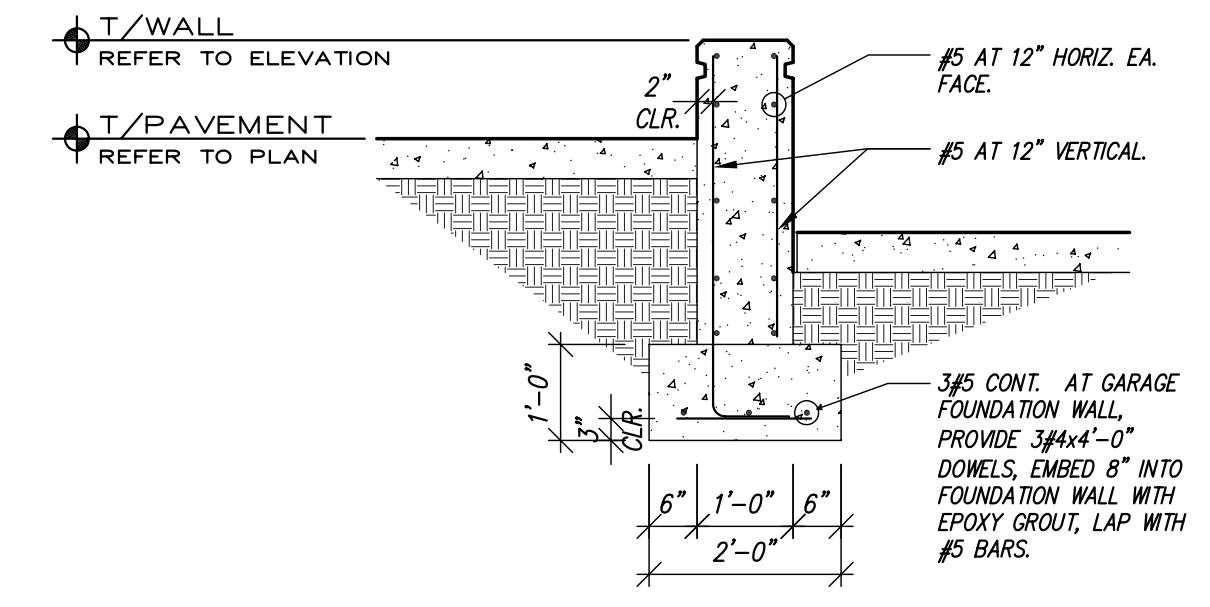
2 CONCRETE WALL DETAILS

1-1/2" = 1'-0"



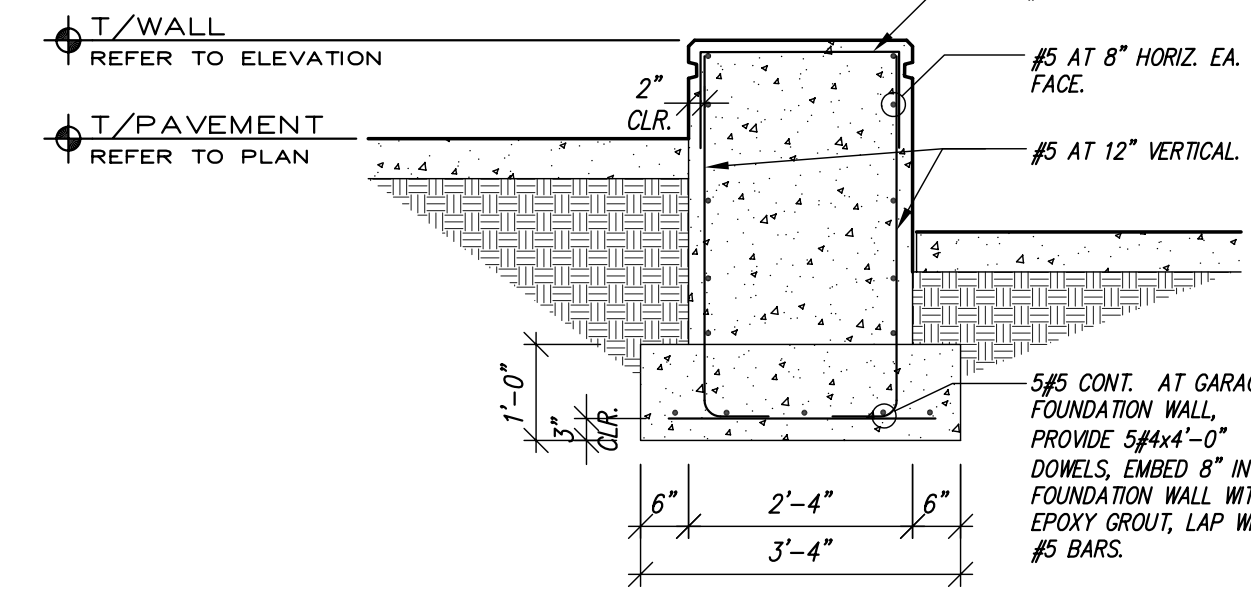
3 RETAINING WALL - 8"

1/2" = 1'-0"



4 RETAINING WALL - 12"

1/2" = 1'-0"



5 RETAINING WALL - 2'-4"

1/2" = 1'-0"

6 NOT USED

7 NOT USED

BID PACKAGE	ISSUED	BID PACKAGE	ISSUED
RECORD DATE			
DRAWN BY	RE		
CHECKED BY	ME		
AAE FILE NO.	280-00		
SCALE	AS NOTED		
DATE	10/30/2003		
AGENCY	COMMONWEALTH OF KENTUCKY	APPROVED FOR PROGRAM CONCEPT ONLY	DATE
AUTHORIZED AGENT	J. L. Wyler 3696 J. Tepe Wurttenberger 3719		
DIVISION OF ENGINEERING		APPROVED FOR PROGRAM CONCEPT ONLY	DATE

**PARKING GARAGE No. 2**  
NORTHERN KENTUCKY UNIVERSITY  
HIGHLAND HEIGHTS, KENTUCKY

**PEDESTRIAN WALK & RAMP DETAILS**

COMMONWEALTH OF KENTUCKY  
FINANCE AND ADMINISTRATION CABINET  
DEPARTMENT FOR FACILITIES MANAGEMENT  
DIVISION OF ENGINEERING  
FRANKFORT, KENTUCKY

Chomplin/Haupt Inc.  
Architects  
202 Farmington Drive, Ste. 101  
Lexington, Kentucky 40517  
Tel: (606) 331-9999  
Fax: (606) 331-9998

DRAWING NO. **A1.12**

REVIEWED DIV. OF ENGR.

FOR INTENT ONLY

ENGR. FILE NO. PNKU0590

J:\171\2860-00 Parking Garage\ghsae 0\Drawings\A1-12 A1-11 A1-12.dwg Jan 05, 2006 3:16pm - (C) Chomplin/Haupt - spe