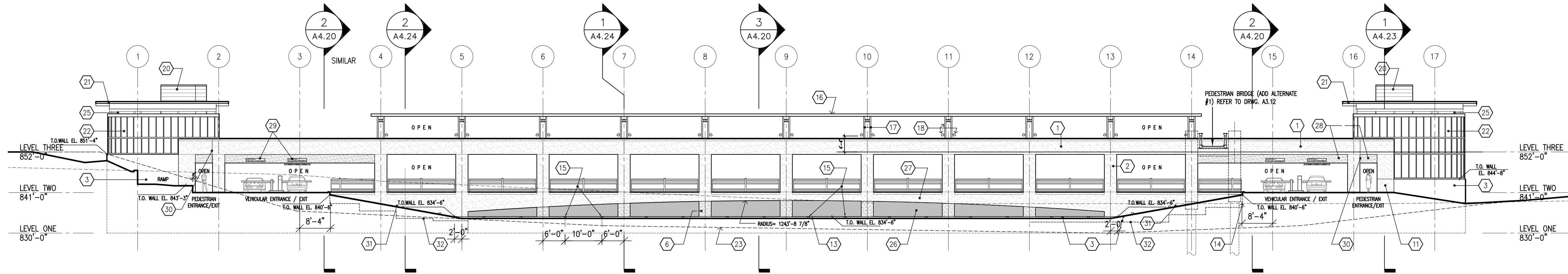


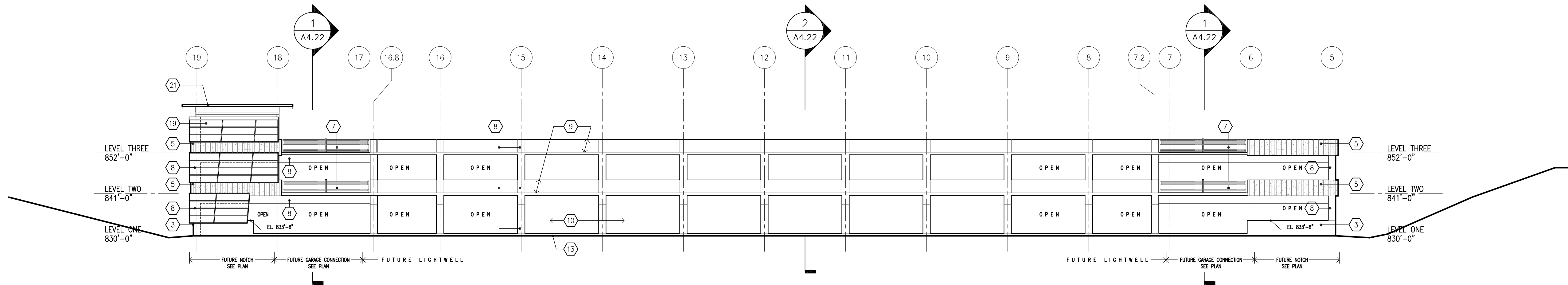
DRAWING NOTES for EXTERIOR ELEVATIONS

NOTES ARE TYPICAL FOR ALL LIKE CONDITIONS, UNLESS NOTED OTHERWISE.

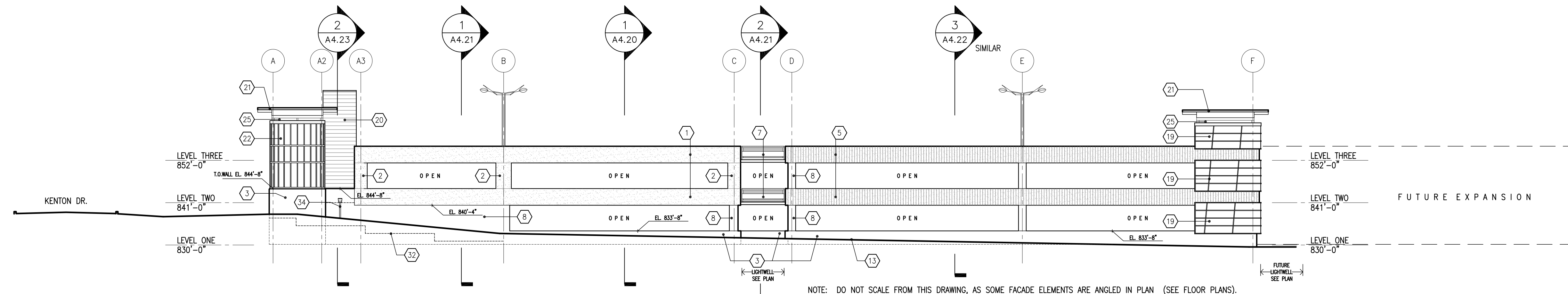
1. PRECAST CONCRETE SPANDREL PANEL; COLOR TO MATCH OTHER PRECAST FACADES ON CAMPUS - COLOR #1; FINISH - SMOOTH (FINISH #1); NOTE: THERE IS A POURED-IN-PLACE VEHICULAR GUARDRAIL BEHIND PRECAST SPANDREL PANELS; SPANDREL PANELS SPAN COLUMN TO COLUMN.
2. PRECAST CONCRETE PANEL ON COLUMN; COLOR TO MATCH OTHER PRECAST FACADES ON CAMPUS - COLOR #1; FINISH - SMOOTH (FINISH #1); PANEL IS WIDER THAN STRUCTURAL COLUMN BEHIND - PANEL IS TO BE CLIP-ATTACHED TO COLUMN, SO THAT CLIPS ARE CONCEALED FROM EXTERIOR VIEW OF GARAGE.
3. EXPOSED CONCRETE FOUNDATION.
4. NOT USED.
5. PRECAST CONCRETE SPANDREL PANEL; COLOR TO MATCH OTHER PRECAST FACADES ON CAMPUS - COLOR #1; FINISH #2 (WITH FORM LINER); NOTE: THERE IS A POURED-IN-PLACE VEHICULAR GUARDRAIL BEHIND PRECAST SPANDREL PANELS; SPANDREL PANELS SPAN COLUMN TO COLUMN. NOTE: THIS FINISH #2 IS USED ON EXTERIOR GARAGE SPANDREL PANELS WHERE GARAGE IS ANGLED IN PLAN.
6. PRECAST CONCRETE PANEL ON COLUMN; COLOR #2 (DARK GRAY); FINISH - SMOOTH (FINISH #1); PANEL IS WIDER THAN STRUCTURAL COLUMN BEHIND - PANEL IS TO BE CLIP-ATTACHED TO COLUMN, SO THAT CLIPS ARE CONCEALED FROM EXTERIOR VIEW OF GARAGE. NOTE: THIS COLOR #2 IS USED ON GARAGE COLUMN PANELS ALONG KENTON DRIVE AT LEVEL ONE OPENING.
7. PAINTED STEEL VEHICULAR AND PEDESTRIAN GUARDRAIL (USED EACH SIDE OF VEHICULAR ASLES @ LIGHTWELLS, AND @ CONNECTING POINTS TO FUTURE GARAGE CONSTRUCTION WHERE IT WILL BE EASILY REMOVABLE).
8. EXPOSED POURED-IN-PLACE CONCRETE GARAGE STRUCTURE. NOTE: THE LIGHTWELL TO BE CONSTRUCTED IN THIS PHASE (PHASE I) WILL ALSO HAVE THIS SAME EXPOSED POURED-IN-PLACE GARAGE STRUCTURE VISIBLE WITHIN THE LIGHTWELL.
9. AT LIGHTWELL (FUTURE LIGHTWELL @ WEST ELEVATION & LIGHTWELL TO BE CONSTRUCTED IN PHASE I), BOTH VEHICULAR & PEDESTRIAN GUARDRAIL TO BE POURED-IN-PLACE CONCRETE.
10. NOTE: NO VEHICULAR GUARDRAILS SHOWN ON LEVEL ONE, WHERE FUTURE CONSTRUCTION IS TO OCCUR - PROVIDE WHEEL BLOCKS.
11. PRECAST CONCRETE INFILL PANEL - SAME AS #1 ABOVE.
12. PRECAST CONCRETE INFILL PANEL - SAME AS #5 ABOVE.
13. NEW GRADE LINE. SEE GRADING PLAN FOR ANY CHANGE BETWEEN EXISTING & NEW GRADES.
14. DASHED LINE INDICATES EXISTING KENTON DRIVE ROADWAY DIRECTLY IN FRONT OF THIS ELEVATION.
15. PAINTED STEEL VEHICULAR GUARDRAIL & VISUAL SCREEN (USED @ LEVEL TWO OF KENTON DRIVE ELEVATION). INCLUDE TWO WELL-TYPE LANDSCAPE UPLIGHTS IN FRONT OF EACH SCREEN.
16. PRE-FINISHED ALUM. BRISE-SOLIEL (SUNSCREEN) - APPROX. 4' DEEP. (ALTERNATE #2)
17. PRE-FINISHED ALUM. TUBE COLUMNS SUPPORTING TRELLIS. TUBE COLUMNS MOUNTED ATOP STUB COLUMNS @ TOP LEVEL OF GARAGE.
18. LIGHT FIXTURES ILLUMINATING UNDERSIDE OF BRISE-SOLIEL AND PARKING AREA.
19. ALUMINUM CURTAINWALL SYSTEM W/ CLEAR SINGLE-GLAZING, SUPPORTED FROM PRE-CAST CONCRETE PANELS. PRE-CAST TO BE ENGINEERED FOR CURTAINWALL ATTACHMENT AND BE CAST WITH STAINLESS STEEL PLATES FOR CURTAINWALL ANCHORAGE.
20. MASONRY ELEVATOR SHAFT. STRUCTURAL GLAZED BLOCK W/ MATTE COLOR FINISH (COLOR : RED TO MATCH SIGNATURE RED METAL ROOFS ON CAMPUS). PROVIDE PREFIN. METAL ALUMINUM PARAPET COPING.
21. PRE-ENGINEERED STRUCTURAL ALUMINUM SLOPED GLAZED SKYLIGHT/CANOPY SYSTEM ON PAINTED STRUCTURAL STEEL TUBE-FRAME.
22. ALUMINUM CURTAINWALL SYSTEM W/ CLEAR SINGLE-GLAZING, SUPPORTED FROM PAINTED STEEL TUBE STRUCTURE.
23. THIS DASHED LINE INDICATES WHERE EXISTING GRADELINE WOULD BE AT THE NEW BUILDING LINE - SEE GRADING PLAN FOR NEW GRADING.
24. THIS DASHED LINE INDICATES LEVEL OF EXISTING BASEBALL FIELD PARKING LOT NEXT TO NEW PARKING GARAGE.
25. OPEN BETWEEN TOP OF STOREFRONT GLAZING & UNDERSIDE OF SLOPED GLAZING.
26. DECORATIVE PAINTED STEEL SECURITY GRILLE IN A STEEL FRAME TO FILL OPENING. REFER TO 3/A4.20 & 7/A6.10 FOR MORE DETAIL.
27. PRECAST CONCRETE SPANDREL PANEL; COLOR #1; FINISH #1; SPANDREL PANELS SPAN COLUMN TO COLUMN.
28. PRECAST CONCRETE, PART OF SPANDREL PANEL ABOVE, COLOR #2 (DARK GRAY); FINISH - SMOOTH (FINISH #1); NOTE: THIS PORTION OF PANEL IS RECESSED 1" FROM TYPICAL PANEL FACE - SEE DETAIL.
29. SIGNAGE - N.I.C.
30. 2" EXPANSION JOINT W/ EXPANSION JOINT FILLER - CUSTOM COLOR. REFER TO 1/A6.31 FOR DETAIL.
31. SLOPED PRE-CAST PANEL - TO REMAIN 2" ABOVE FINISHED GRADE.
32. FOUNDATION LEDGE - THICKENED FOUNDATION WALL, SEE STRUCT DWGS. FOR EXACT LOCATIONS.
33. PAINTED TUBE STEEL FRAME.
34. PRE-FINISHED ALUMINUM COLLECTOR AND DOWN PIPE. (REFER TO DETAIL 5/A2.30)



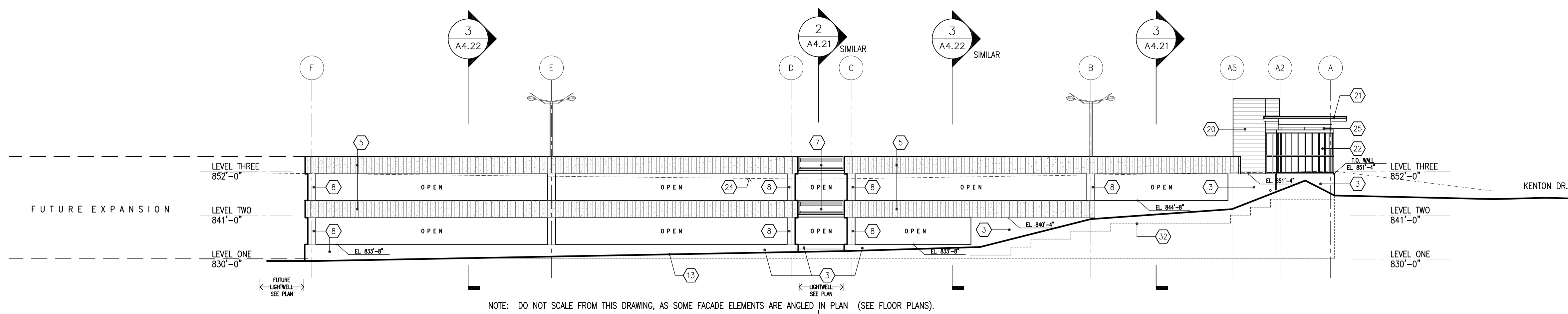
4 EAST ELEVATION (KENTON DRIVE) 1/16" = 1'-0"



3 WEST ELEVATION 1/16" = 1'-0"



2 NORTH ELEVATION 1/16" = 1'-0"



1 SOUTH ELEVATION 1/16" = 1'-0"

DRAWING NOTES

BID PACKAGE	ISSUED	BID PACKAGE	ISSUED

PARKING GARAGE No. 2
NORTHERN KENTUCKY UNIVERSITY
HIGHLAND HEIGHTS, KENTUCKY

BUILDING ELEVATIONS

COMMONWEALTH OF KENTUCKY
FINANCE AND ADMINISTRATION CABINET
DEPARTMENT FOR FACILITIES MANAGEMENT
DIVISION OF ENGINEERING
FRANKFORT, KENTUCKY

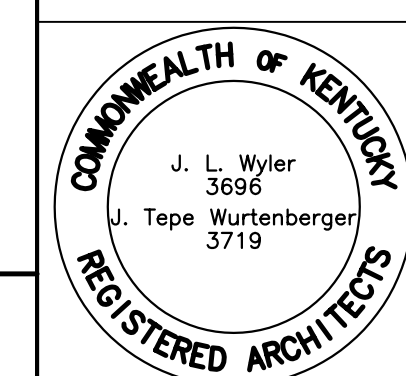
RECORD DATE
DRAWN BY
CHECKED BY
SCALE
DATE
AGENCY AUTHORIZED AGENT
DIVISION OF ENGINEERING

REVIEWED DIV. OF ENGR.
ENGR. FILE NO.
FOR INTENT ONLY
PNK00590

APPROVED FOR PROGRAM CONCEPT ONLY

DATE

DATE



J:\17\2880-00 Parking Garage\Jobset\Drawings\A3-10 & A3-11.dwg, Jun 06, 2006 2:28pm - (C) Champlin/Haupt - enr