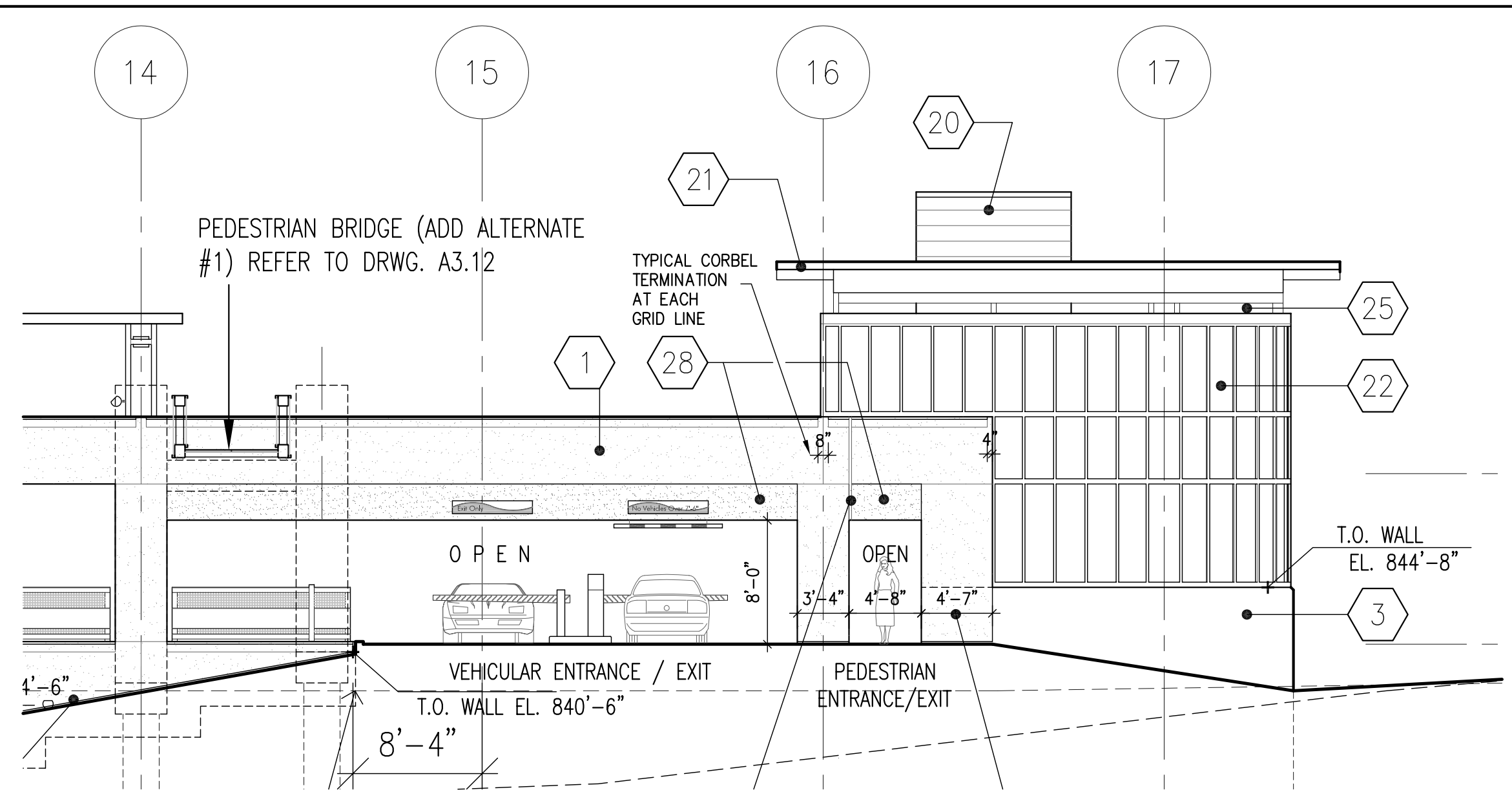
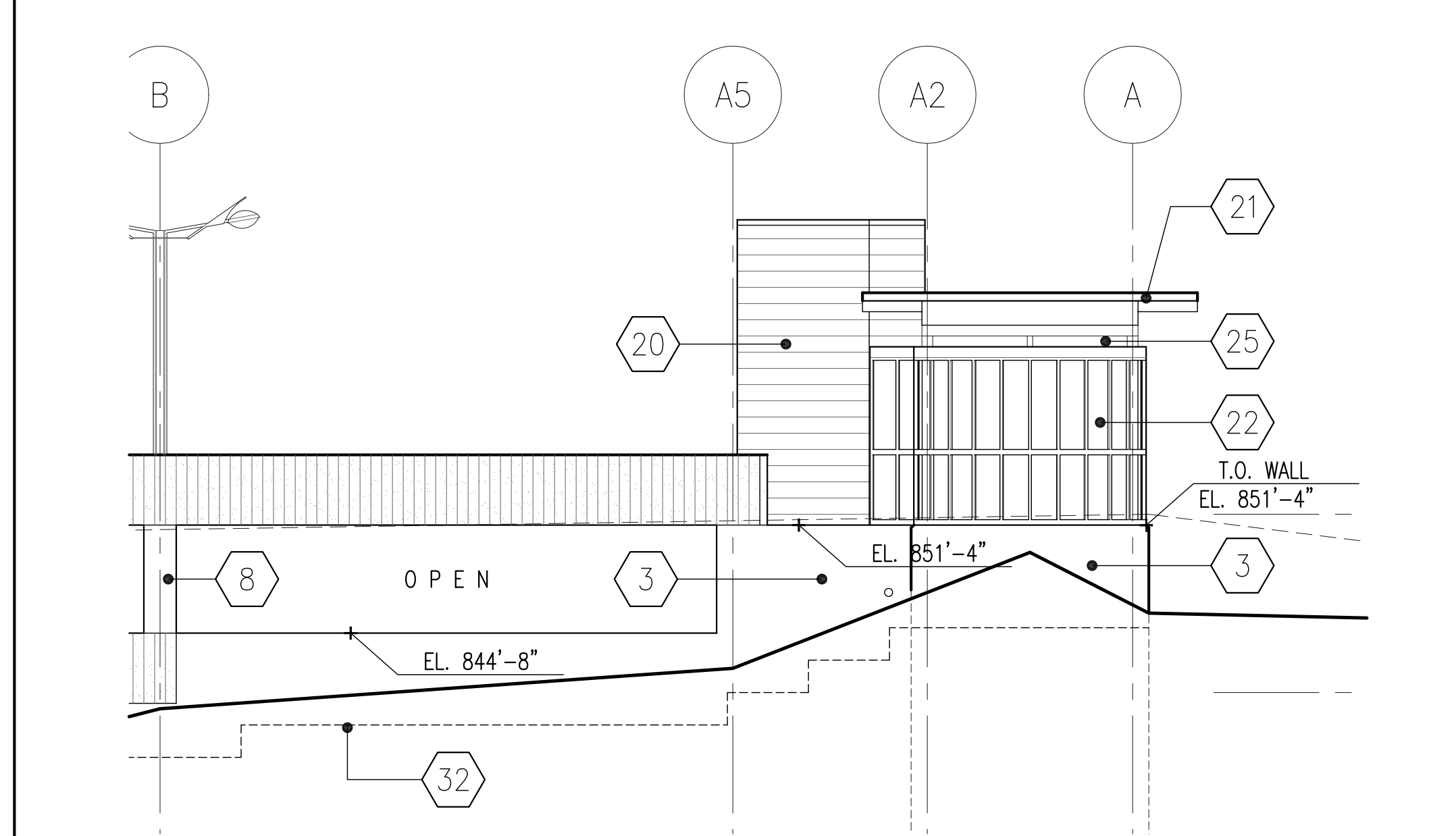


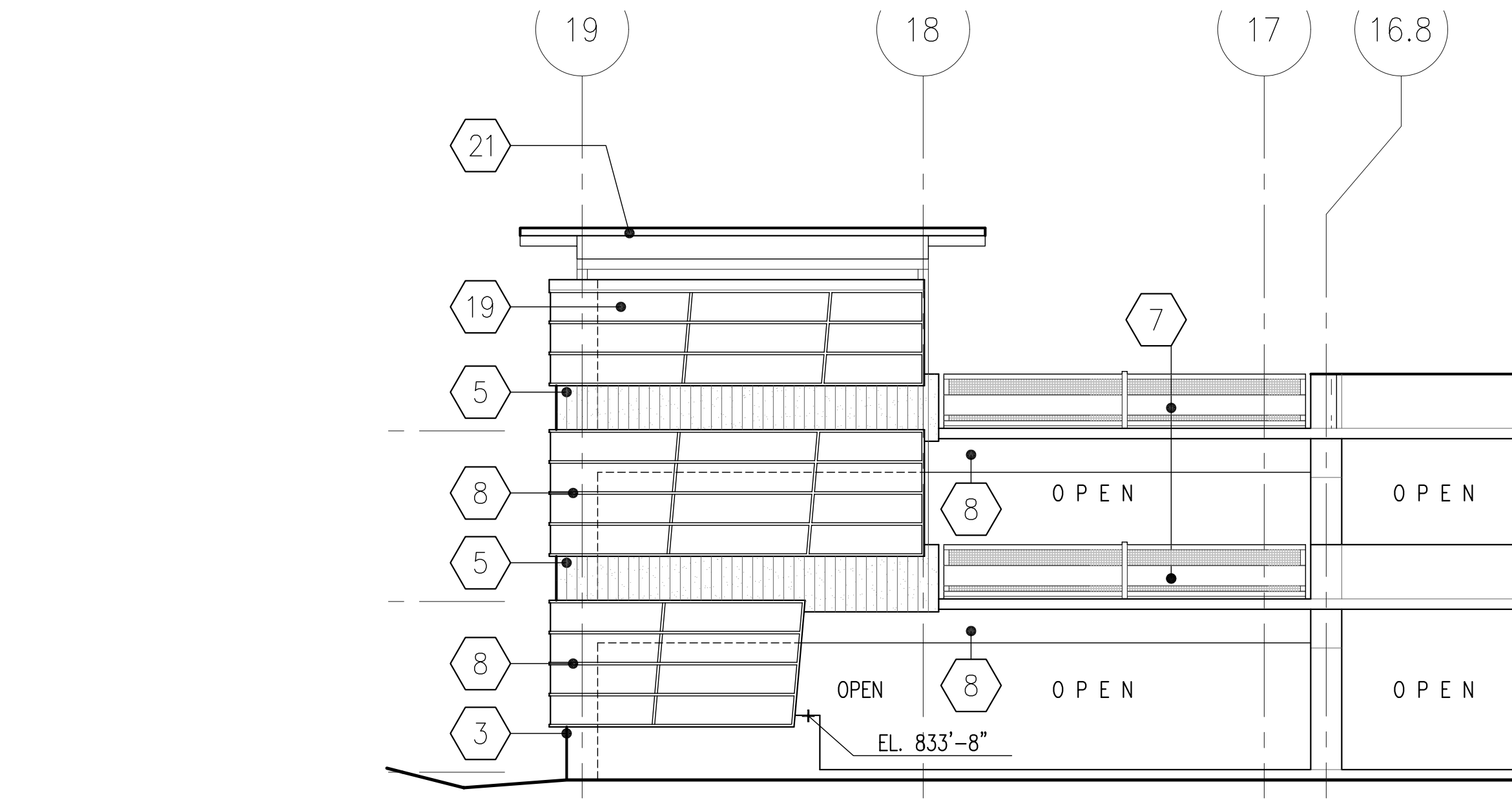
8 EAST ELEVATION (PARTIAL 1/8" SCALE) 1/8" = 1'-0"



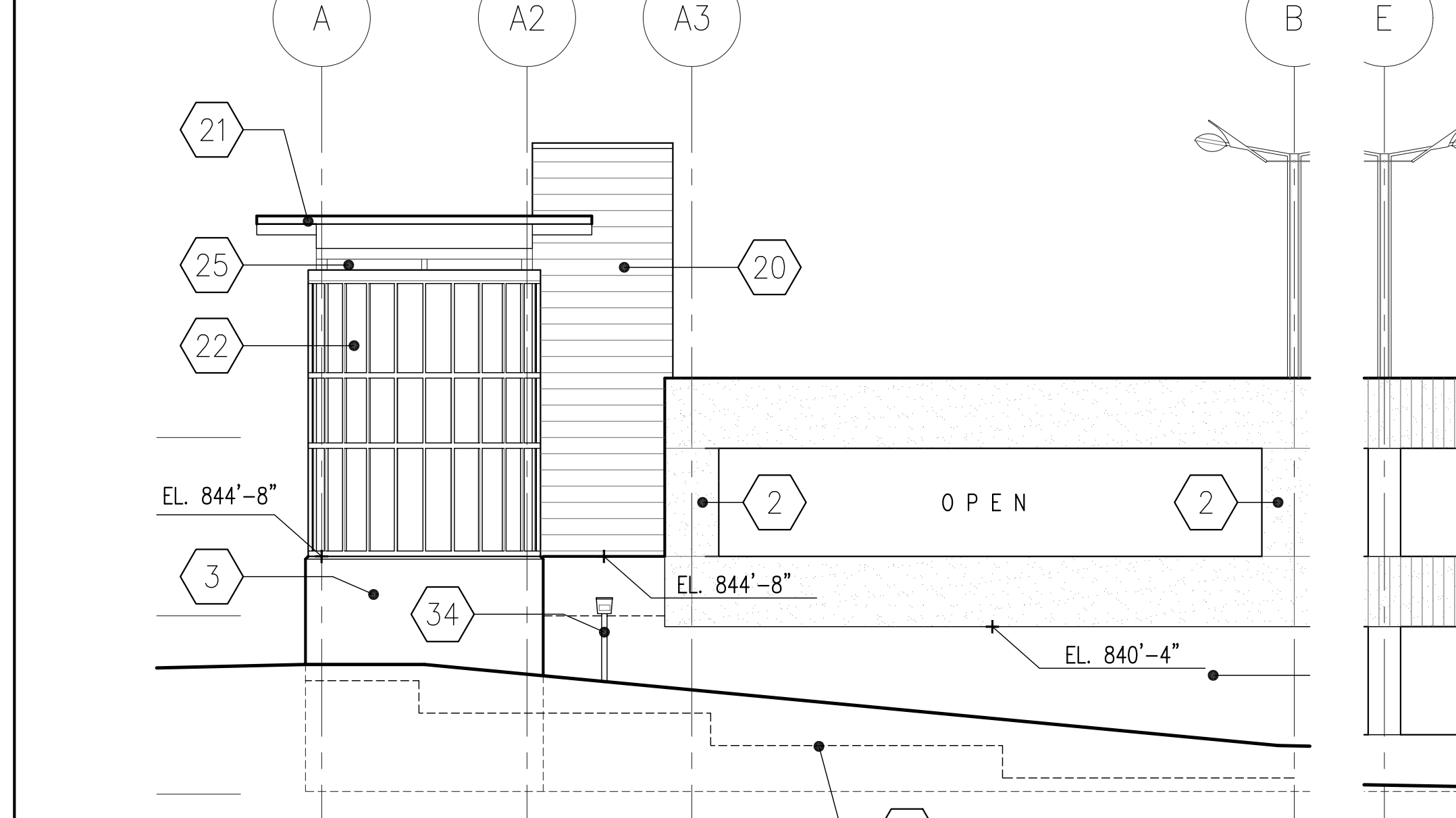
7 WEST ELEVATION (PARTIAL 1/8" SCALE) 1/8" = 1'-0"



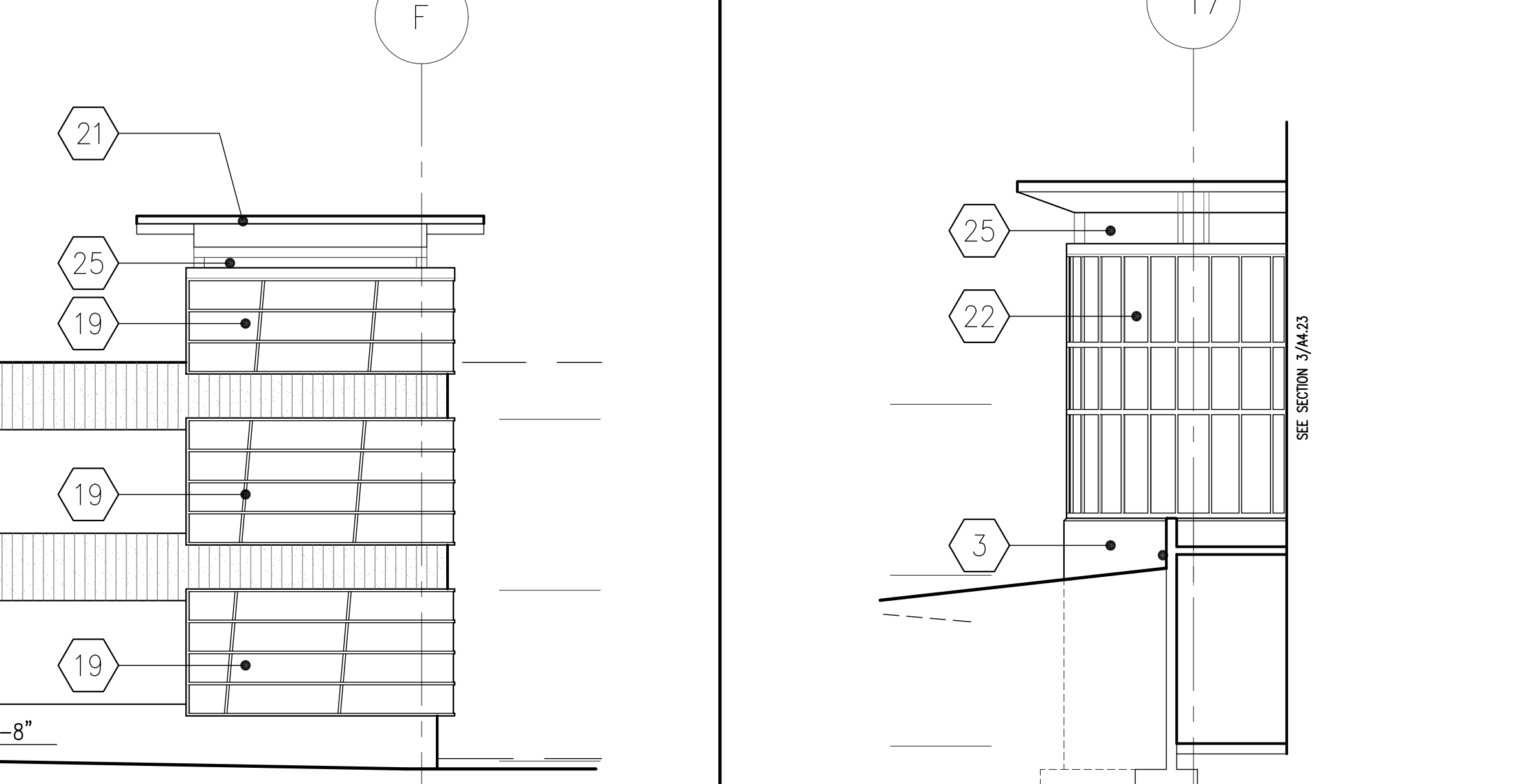
6 SOUTH ELEVATION (PARTIAL 1/8" SCALE) 1/8" = 1'-0"



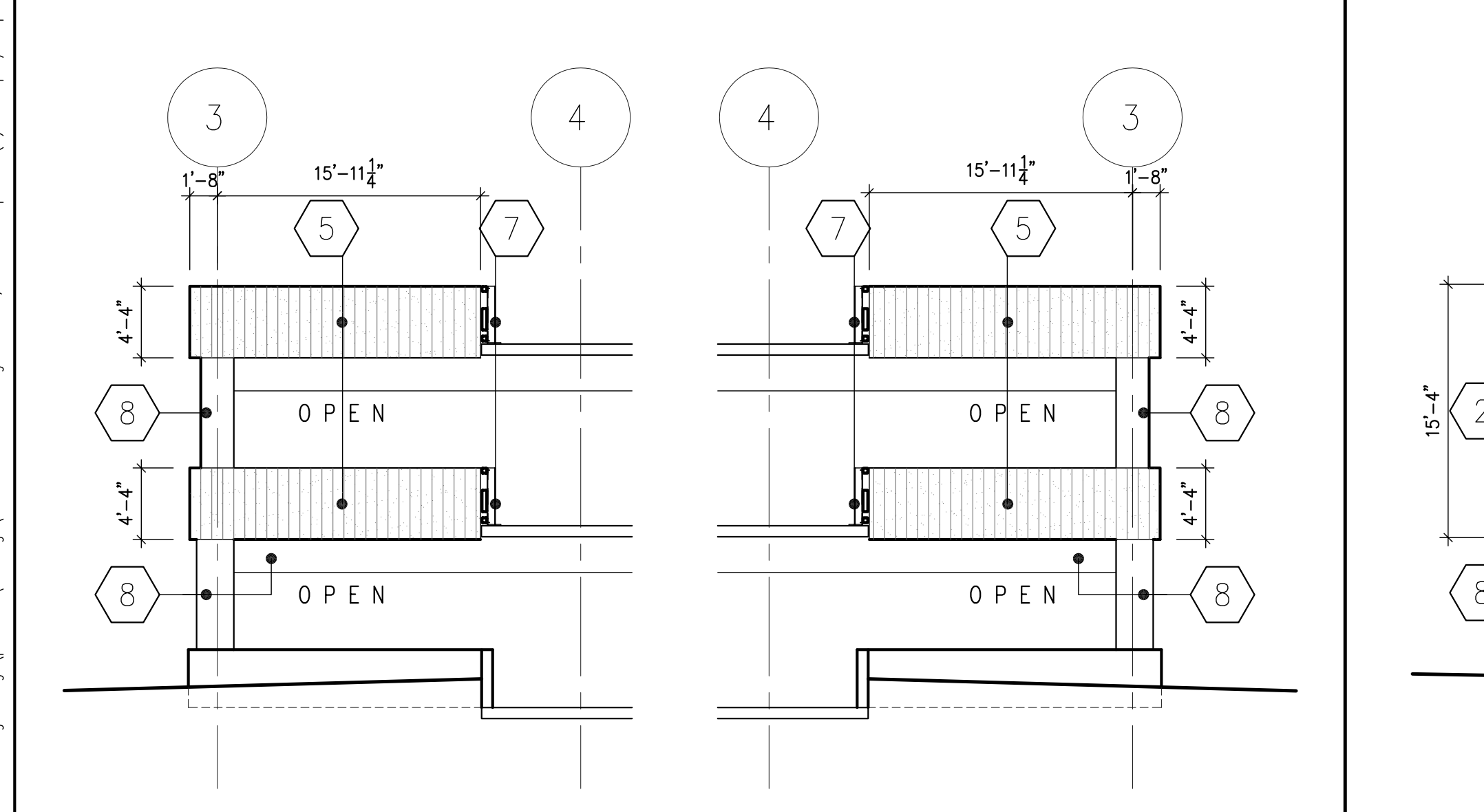
7 WEST ELEVATION (PARTIAL 1/8" SCALE) 1/8" = 1'-0"



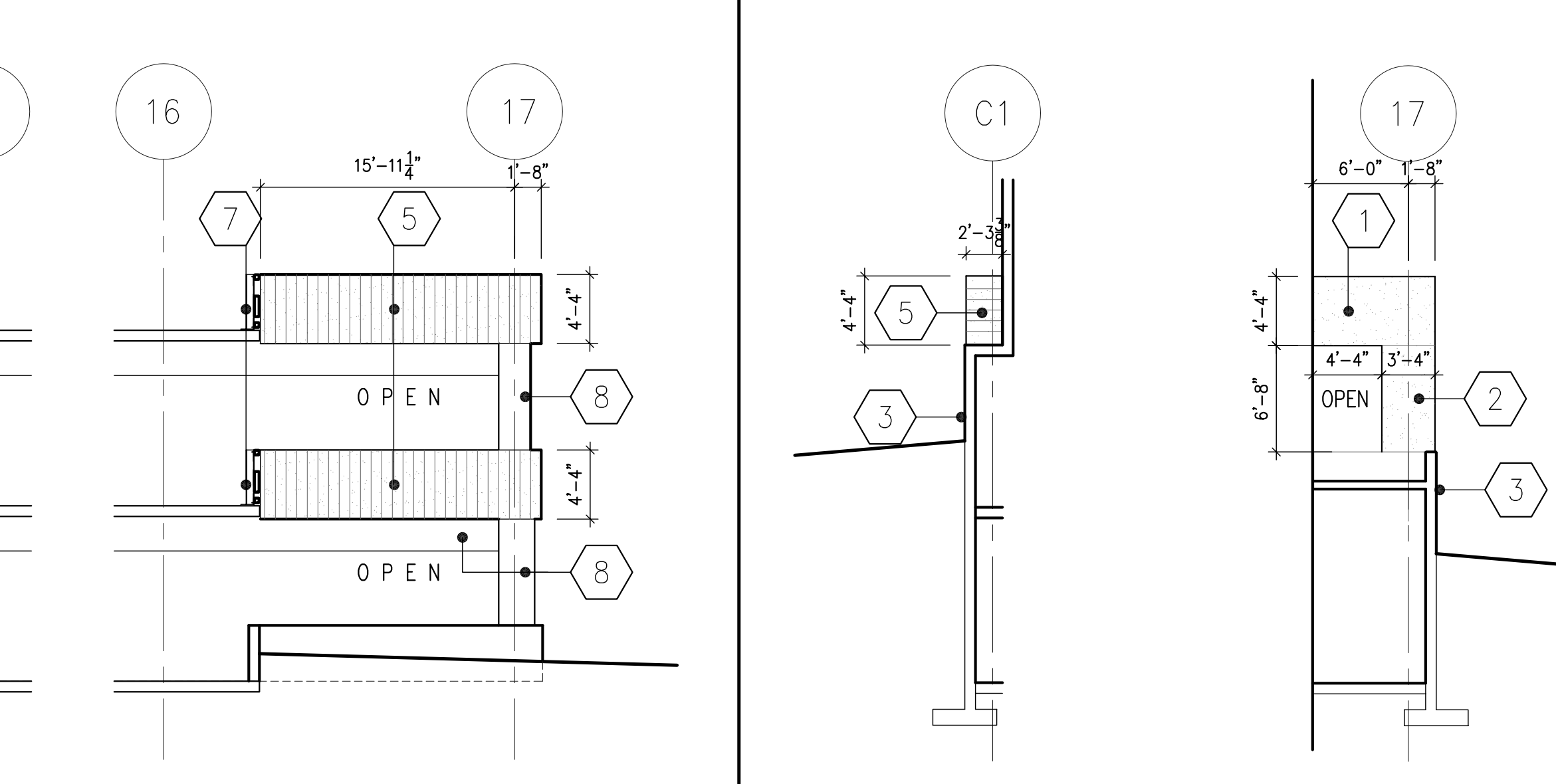
4 NORTH ELEVATION (PARTIAL 1/8" SCALE) 1/8" = 1'-0"



5 West Elevation - Stair #1 1/8" = 1'-0"



1 SOUTH ELEVATION NOTCH 1/8" = 1'-0"



2 NORTH ELEVATION NOTCH 1/8" = 1'-0"

- DRAWING NOTES for EXTERIOR ELEVATIONS
- NOTES ARE TYPICAL FOR ALL LIKE CONDITIONS, UNLESS NOTED OTHERWISE.
- PRECAST CONCRETE SPANDREL PANEL; COLOR TO MATCH OTHER PRECAST FACADES ON CAMPUS - COLOR #1; FINISH - SMOOTH (FINISH #1); NOTE: THERE IS A POURED-IN-PLACE VEHICULAR GUARDRAIL BEHIND PRECAST SPANDREL PANELS; SPANDREL PANELS SPAN COLUMN TO COLUMN.
 - PRECAST CONCRETE PANEL ON COLUMN; COLOR TO MATCH OTHER PRECAST FACADES ON CAMPUS - COLOR #1; FINISH - SMOOTH (FINISH #1); NOTE: PANEL IS WIDER THAN STRUCTURAL COLUMN BEHIND - PANEL IS TO BE CLIP-ATTACHED TO COLUMN, SO THAT CLIPS ARE CONCEALED FROM EXTERIOR VIEW OF GARAGE.
 - EXPOSED CONCRETE FOUNDATION.
 - NOT USED.
 - PRECAST CONCRETE SPANDREL PANEL; COLOR TO MATCH OTHER PRECAST FACADES ON CAMPUS - COLOR #1; FINISH #2 (WITH FORM LINER). NOTE: THERE IS A POURED-IN-PLACE VEHICULAR GUARDRAIL BEHIND PRECAST SPANDREL PANELS; SPANDREL PANELS SPAN COLUMN TO COLUMN. NOTE: THIS FINISH #2 IS USED ON EXTERIOR GARAGE SPANDREL PANELS WHERE GARAGE IS ANGLED IN PLAN.
 - PRECAST CONCRETE PANEL ON COLUMN; COLOR #2 (DARK GRAY); FINISH - SMOOTH (FINISH #1); PANEL IS WIDER THAN STRUCTURAL COLUMN BEHIND - PANEL IS TO BE CLIP-ATTACHED TO COLUMN, SO THAT CLIPS ARE CONCEALED FROM EXTERIOR VIEW OF GARAGE. NOTE: THIS COLOR #2 IS USED ON GARAGE COLUMN PANELS ALONG KENTON DRIVE AT LEVEL ONE OPENING.
 - PAINTED STEEL VEHICULAR AND PEDESTRIAN GUARDRAIL (USED EACH SIDE OF VEHICULAR AISLES @ LIGHTWELLS, AND @ CONNECTING POINTS TO FUTURE GARAGE CONSTRUCTION WHERE IT WILL BE EASILY REMOVABLE).
 - EXPOSED POURED-IN-PLACE CONCRETE GARAGE STRUCTURE. NOTE: THE LIGHTWELL TO BE CONSTRUCTED IN THIS PHASE (PHASE I) WILL ALSO HAVE THIS SAME EXPOSED POURED-IN-PLACE CONCRETE STRUCTURE VISIBLE WITHIN THE LIGHTWELL.
 - AT LIGHTWELL (FUTURE LIGHTWELL @ WEST ELEVATION & LIGHTWELL TO BE CONSTRUCTED IN PHASE I); BOTH VEHICULAR & PEDESTRIAN GUARDRAIL TO BE POURED-IN-PLACE CONCRETE.
 - NOTE: NO VEHICULAR GUARDRAILS SHOWN ON LEVEL ONE, WHERE FUTURE CONSTRUCTION IS TO OCCUR - PROVIDE WHEEL BLOCKS.
 - PRECAST CONCRETE INFILL PANEL - SAME AS #1 ABOVE.
 - PRECAST CONCRETE INFILL PANEL - SAME AS #5 ABOVE.
 - NEW GRADE LINE - SEE GRADING PLAN FOR ANY CHANGE BETWEEN EXISTING & NEW GRADES.
 - DASHED LINE INDICATES EXISTING KENTON DRIVE ROADWAY DIRECTLY IN FRONT OF THIS ELEVATION.
 - PAINTED STEEL VEHICULAR GUARDRAIL & VISUAL SCREEN (USED @ LEVEL TWO OF KENTON DRIVE ELEVATION); INCLUDE TWO WELL-TYPE LANDSCAPE UPLIFTS IN FRONT OF EACH SCREEN.
 - PRE-FINISHED ALUM. BRISE-SOLEIL (SUNSCREEN) - APPROX. 4" DEEP. (ALTERNATE #2)
 - PRE-FINISHED ALUM. TUBE COLUMNS SUPPORTING TRELLIS. TUBE COLUMNS MOUNTED ATOP STUB COLUMNS @ TOP LEVEL OF GARAGE.
 - LIGHT FIXTURES ILLUMINATING UNDERSIDE OF BRISE-SOLEIL AND PARKING AREA.
 - ALUMINUM CURTAINWALL SYSTEM W/ CLEAR SINGLE-GLAZING, SUPPORTED FROM PRE-CAST CONCRETE PANELS. PRE-CAST TO BE ENGINEERED FOR CURTAINWALL ATTACHMENT AND BE CAST WITH STAINLESS STEEL PLATES FOR CURTAINWALL ANCHORAGE.
 - MASONRY ELEVATOR SHAFT. STRUCTURAL GLAZED BLOCK W/ MATTE COLOR FINISH (COLOR: RED TO MATCH SIGNATURE RED METAL ROOFS ON CAMPUS). PROVIDE PREFIN. METAL ALUMINUM PARAPET COPING.
 - PRE-ENGINEERED STRUCTURAL ALUMINUM SLOPED GLAZED SKYLIGHT/CANOPY SYSTEM ON PAINTED STRUCTURAL STEEL TUBE-FRAME.
 - ALUMINUM CURTAINWALL SYSTEM W/ CLEAR SINGLE-GLAZING, SUPPORTED FROM PAINTED STEEL TUBE STRUCTURE.
 - THIS DASHED LINE INDICATES WHERE EXISTING GRADELINE WOULD BE AT THE NEW BUILDING LINE - SEE GRADING PLAN FOR NEW GRADING.
 - THIS DASHED LINE INDICATES LEVEL OF EXISTING BASEBALL FIELD PARKING LOT NEXT TO NEW PARKING GARAGE.
 - OPEN BETWEEN TOP OF STOREFRONT GLAZING & UNDERSIDE OF SLOPED GLAZING.
 - DECORATIVE PAINTED STEEL SECURITY GRILLE IN A STEEL FRAME TO FILL OPENING. REFER TO 3/44.20 & 7/46.10 FOR MORE DETAIL.
 - PRECAST CONCRETE SPANDREL PANEL; COLOR #1; FINISH #1; SPANDREL PANELS SPAN COLUMN TO COLUMN.
 - PRECAST CONCRETE, PART OF SPANDREL PANEL ABOVE; COLOR #2 (DARK GRAY); FINISH - SMOOTH (FINISH #1); NOTE: THIS PORTION OF PANEL IS RECESSED 1" FROM TYPICAL PANEL FACE - SEE DETAIL.
 - SIGNAGE - N.I.C.
 - 2" EXPANSION JOINT W/ EXPANSION JOINT FILLER - CUSTOM COLOR. REFER TO 1/46.31 FOR DETAIL.
 - SLOPED PRE-CAST PANEL - TO REMAIN 2" ABOVE FINISHED GRADE.
 - FOUNDATION LEDGE - THICKENED FOUNDATION WALL, SEE STRUCT DWGS. FOR EXACT LOCATIONS.
 - PAINTED TUBE STEEL FRAME.
 - PRE-FINISHED ALUMINUM COLLECTOR AND DOWN PIPE. (REFER TO DETAIL 5/42.30)

DRAWING NOTES

BID PACKAGE	ISSUED	BID PACKAGE	ISSUED

RECORD DATE: _____

DRAWN BY: _____

CHECKED BY: _____

AGENCY AUTHORIZED AGENT: _____ DATE: _____

DIVISION OF ENGINEERING: _____ DATE: _____

APPROVED FOR PROGRAM CONCEPT ONLY

APPROVED FOR PROGRAM CONCEPT ONLY

PARKING GARAGE No. 2
NORTHERN KENTUCKY UNIVERSITY
 HIGHLAND HEIGHTS, KENTUCKY

BUILDING ELEVATIONS (PARTIAL 1/8" SCALE)

COMMONWEALTH OF KENTUCKY
 FINANCE AND ADMINISTRATION CABINET
 DEPARTMENT FOR FACILITIES MANAGEMENT
 DIVISION OF ENGINEERING
 FRANKFORT, KENTUCKY

Architects
 Champlin/Haupt Inc.
 202 Farmington Drive, Ste. 101
 Louisville, KY 40204
 Tel: (502) 331-5900
 Fax: (502) 331-5999

REVISIONS

NO.	RECORD DRAWINGS	DATE
1	RECORD DRAWINGS	6/20/05
2		
3		
4		
5		
6		
7		
8		

DATE: 10/30/2003

ENGR. FILE NO. PNK00590

REVIEWED DIV. OF ENGR. _____

ENGR. FILE NO. _____

J:\A17\2880-00 Parking Garage\Phase 0\Drawings\A3-10 & A3-11.dwg, Jun 06, 2005 2:29pm - (C) Champlin/Haupt - enr