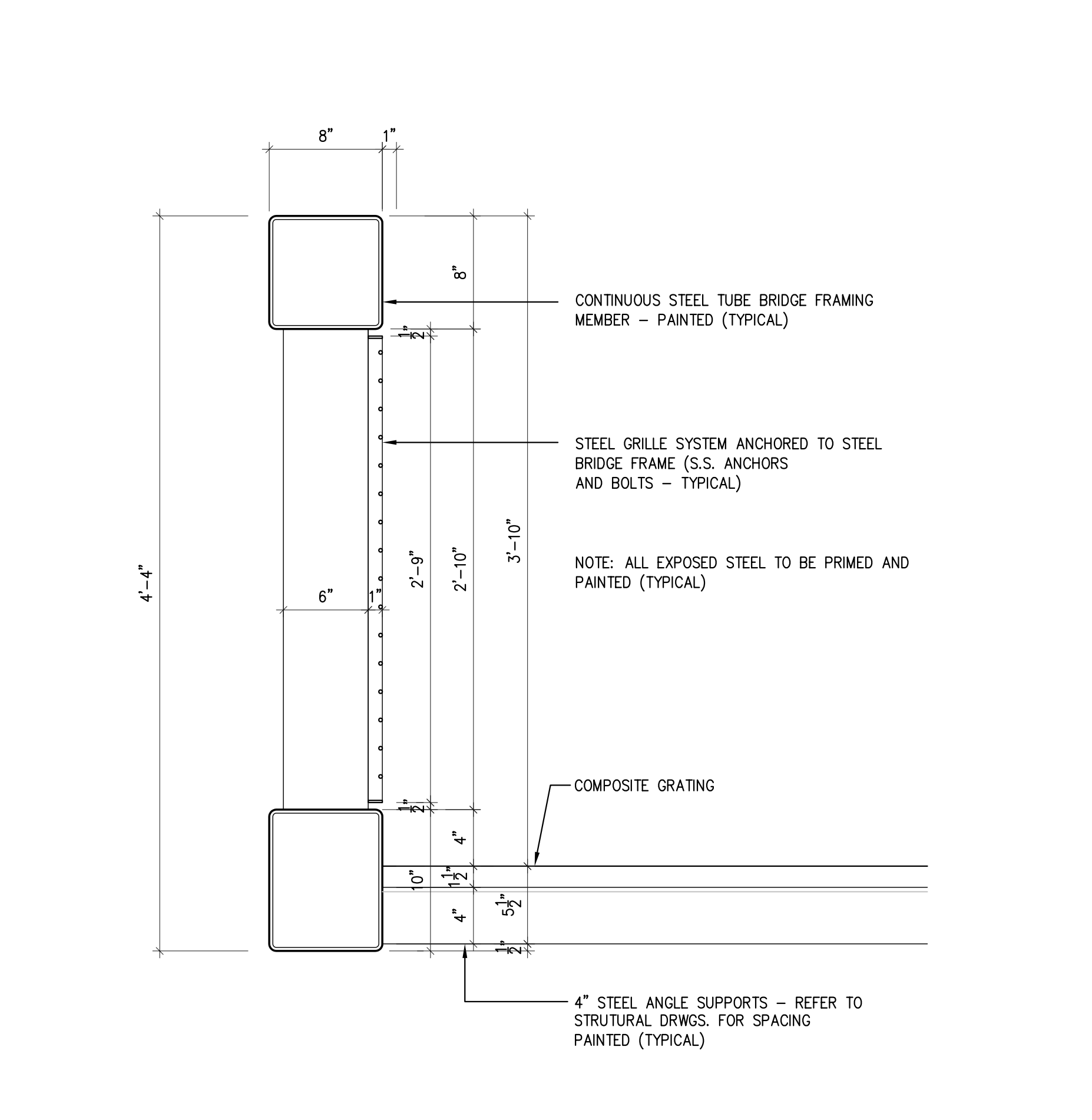
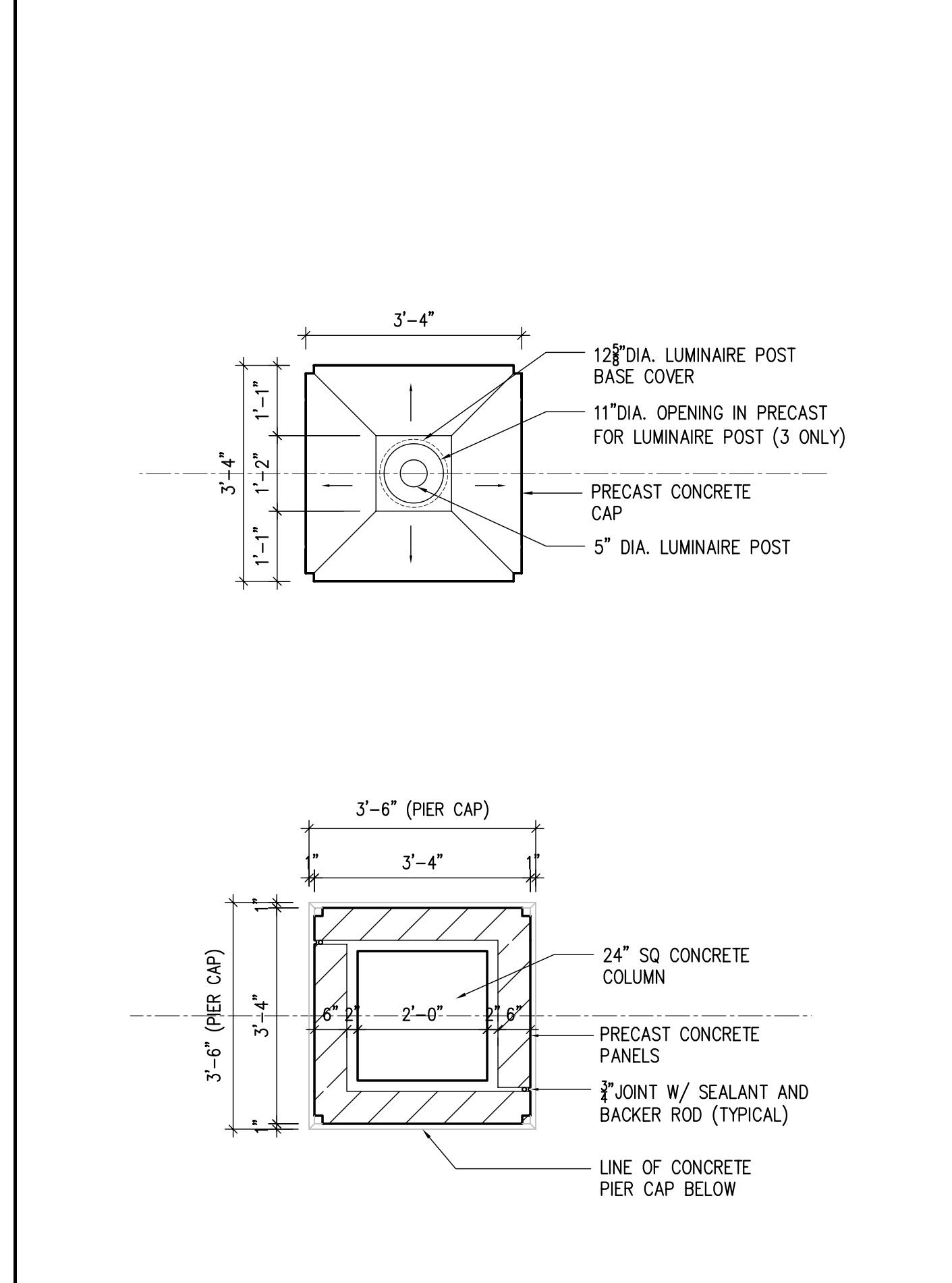
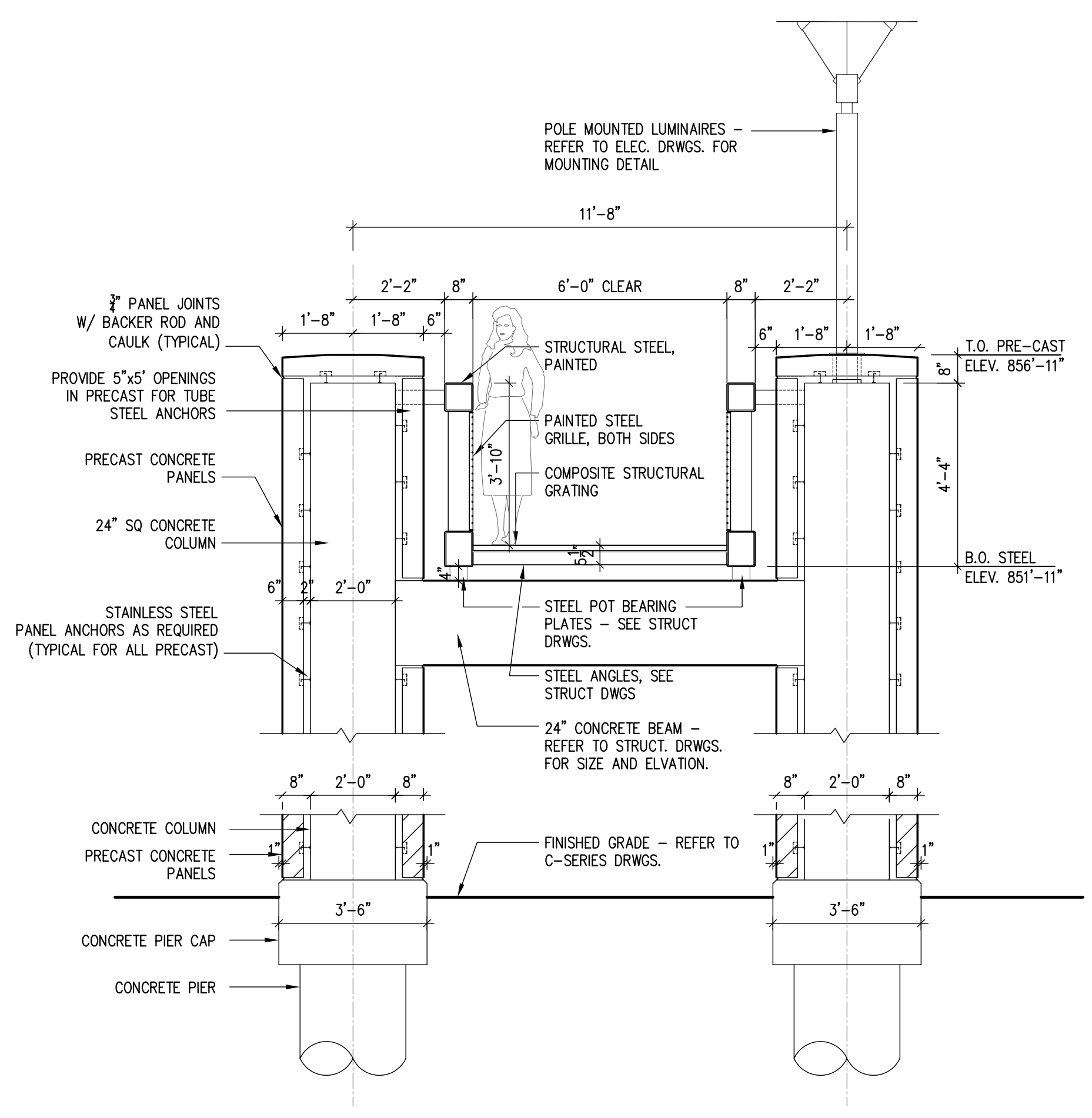


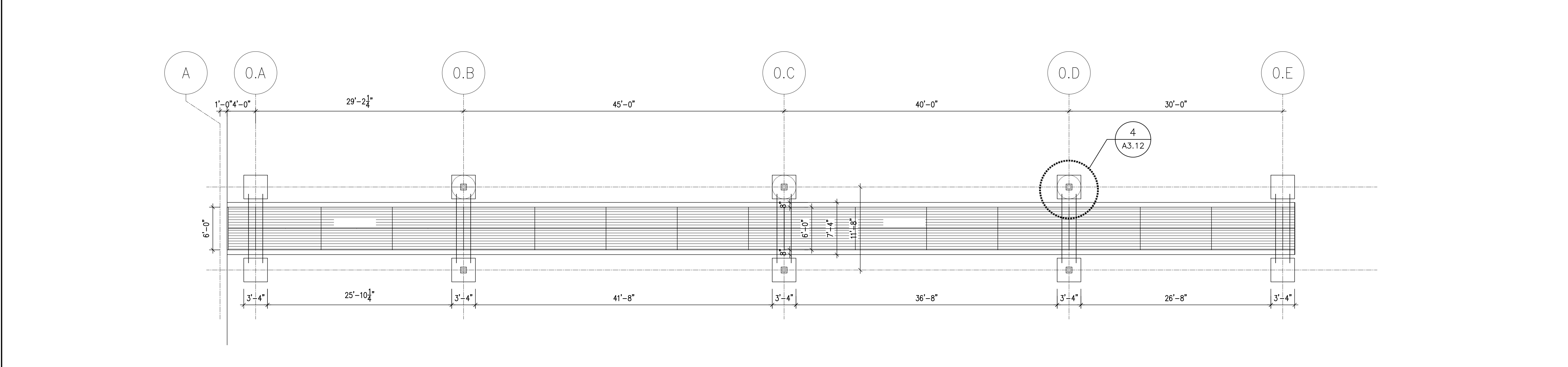
J:\17\2880-00 Parking Garage\phase 0\drawings\A3-12.dwg Jun 05, 2006 14:17pm - (C) Champlin/Haupt - 095



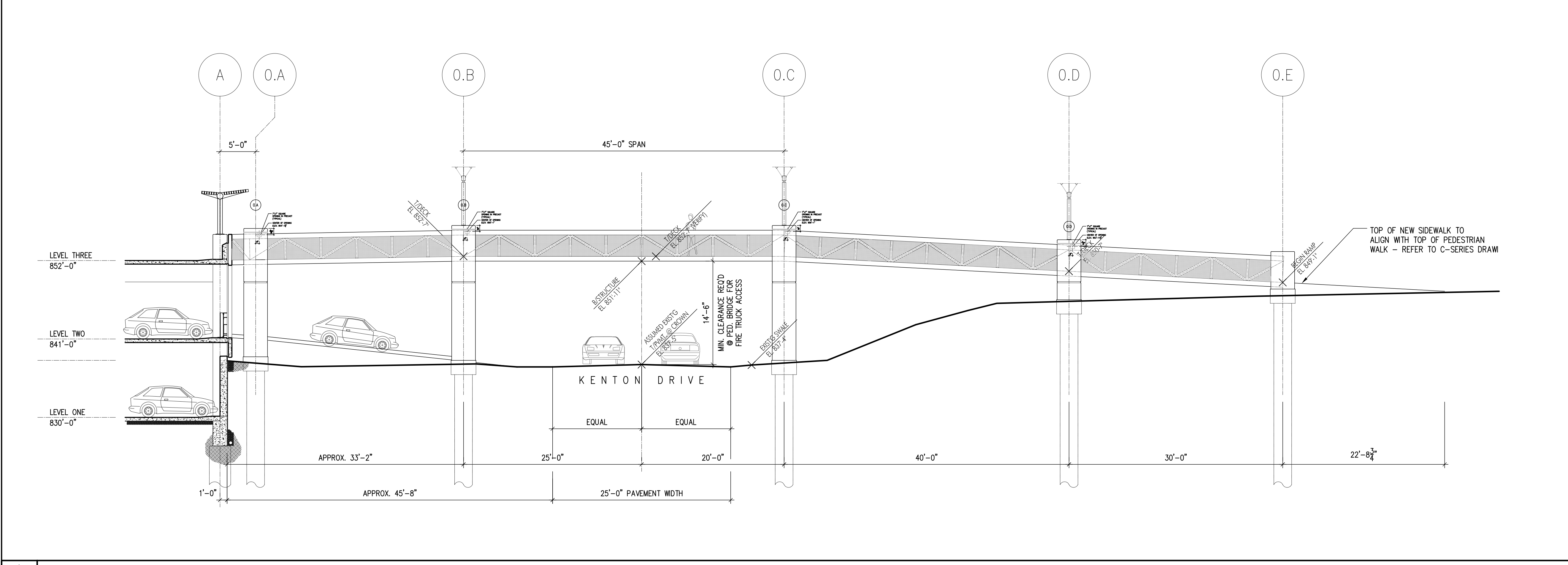
3 PEDESTRIAN BRIDGE SECTION **3/8" = 1'-0"**

4 COLUMN DETAIL **1/2" = 1'-0"**

5 GUARDRAIL DETAIL **1 1/2" = 1'-0"**



2 PEDESTRIAN BRIDGE PLAN - (ADD ALTERNATE #1) **1/8" = 1'-0"**



1 PEDESTRIAN BRIDGE SOUTH ELEVATION - (ADD ALTERNATE #1) **1/8" = 1'-0"**

DRAWING NOTES for EXTERIOR ELEVATIONS

- NOTES ARE TYPICAL FOR ALL LIKE CONDITIONS, UNLESS NOTED OTHERWISE.
- PRECAST CONCRETE SPANDREL PANEL; COLOR TO MATCH OTHER PRECAST FACADES ON CAMPUS - COLOR #1; FINISH - SMOOTH (FINISH #1); NOTE: THERE IS A POURED-IN-PLACE VEHICLE GUARDRAIL BEHIND PRECAST SPANDREL PANELS; SPANDREL PANELS SPAN COLUMN TO COLUMN.
 - PRECAST CONCRETE PANEL ON COLUMN; COLOR TO MATCH OTHER PRECAST FACADES ON CAMPUS - COLOR #1; FINISH - SMOOTH (FINISH #1); NOTE: PANEL IS WIDER THAN STRUCTURAL COLUMN BEHIND - PANEL IS TO BE CLIP-ATTACHED TO COLUMN, SO THAT CLIPS ARE CONCEALED FROM EXTERIOR VIEW OF GARAGE.
 - EXPOSED CONCRETE FOUNDATION.
 - NOT USED.
 - PRECAST CONCRETE SPANDREL PANEL; COLOR TO MATCH OTHER PRECAST FACADES ON CAMPUS - COLOR #1; FINISH #2 (WITH FORM LINES); NOTE: THERE IS A POURED-IN-PLACE VEHICLE GUARDRAIL BEHIND PRECAST SPANDREL PANELS; SPANDREL PANELS SPAN COLUMN TO COLUMN. NOTE: THIS FINISH #2 IS USED ON EXTERIOR GARAGE SPANDREL PANELS WHERE GARAGE IS ANGLED IN PLAN.
 - PRECAST CONCRETE PANEL ON COLUMN; COLOR #2 (DARK GRAY); FINISH - SMOOTH (FINISH #1); PANEL IS WIDER THAN STRUCTURAL COLUMN BEHIND - PANEL IS TO BE CLIP-ATTACHED TO COLUMN, SO THAT CLIPS ARE CONCEALED FROM EXTERIOR VIEW OF GARAGE. NOTE: THIS COLOR #2 IS USED ON GARAGE COLUMN PANELS ALONG KENTON DRIVE AT LEVEL ONE OPENING.
 - PAINTED STEEL VEHICULAR AND PEDESTRIAN GUARDRAIL (USED EACH SIDE OF VEHICULAR AISLES @ LIGHTWELLS, AND @ CONNECTING POINTS TO FUTURE GARAGE CONSTRUCTION WHERE IT WILL BE EASILY REMOVABLE).
 - EXPOSED POURED-IN-PLACE CONCRETE GARAGE STRUCTURE. NOTE: THE LIGHTWELL TO BE CONSTRUCTED IN THIS PHASE (PHASE I), WILL ALSO HAVE THIS SAME EXPOSED POURED-IN-PLACE GARAGE STRUCTURE VISIBLE WITHIN THE LIGHTWELL.
 - AT LIGHTWELL (FUTURE LIGHTWELL @ WEST ELEVATION & LIGHTWELL TO BE CONSTRUCTED IN PHASE I), BOTH VEHICULAR & PEDESTRIAN GUARDRAIL TO BE POURED-IN-PLACE CONCRETE.
 - NOTE: NO VEHICULAR GUARDRAILS SHOWN ON LEVEL ONE, WHERE FUTURE CONSTRUCTION IS TO OCCUR - PROVIDE WHEEL BLOCKS.
 - PRECAST CONCRETE INFILL PANEL - SAME AS #1 ABOVE.
 - PRECAST CONCRETE INFILL PANEL - SAME AS #5 ABOVE.
 - NEW GRADE LINE - SEE GRADING PLAN FOR ANY CHANGE BETWEEN EXISTING & NEW GRADES.
 - DASHED LINE INDICATES EXISTING KENTON DRIVE ROADWAY DIRECTLY IN FRONT OF THIS ELEVATION.
 - PAINTED STEEL VEHICULAR GUARDRAIL & VISUAL SCREEN (USED @ LEVEL TWO OF KENTON DRIVE ELEVATION). INCLUDE TWO WELL-TYPE LANDSCAPE UPLIGHTS IN FRONT OF EACH SCREEN.
 - PRE-FINISHED ALUM. BRISE-SOLEIL (SUNSCREEN) - APPROX. 4' DEEP. (ALTERNATE #2)
 - PRE-FINISHED ALUM. TUBE COLUMNS SUPPORTING TRELLIS. TUBE COLUMNS MOUNTED ATOP STUB COLUMNS @ TOP LEVEL OF GARAGE.
 - LIGHT FIXTURES ILLUMINATING UNDERSIDE OF BRISE-SOLEIL AND PARKING AREA.
 - ALUMINUM CURTAINWALL SYSTEM W/ CLEAR SINGLE-GLAZING, SUPPORTED FROM PRE-CAST CONCRETE PANELS. PRE-CAST TO BE ENGINEERED FOR CURTAINWALL ATTACHMENT AND BE CAST WITH STAINLESS STEEL PLATES FOR CURTAINWALL ANCHORAGE.
 - MASONRY ELEVATOR SHAFT. STRUCTURAL GLAZED BLOCK W/ MATTE COLOR FINISH (COLOR : RED TO MATCH SIGNATURE RED METAL ROOFS ON CAMPUS). PROVIDE PREFIN. METAL ALUMINUM PARAPET COPING.
 - PRE-ENGINEERED STRUCTURAL ALUMINUM SLOPED GLAZED SKYLIGHT/CANOPY SYSTEM ON PAINTED STRUCTURAL STEEL TUBE-FRAME.
 - ALUMINUM CURTAINWALL SYSTEM W/ CLEAR SINGLE-GLAZING, SUPPORTED FROM PAINTED STEEL TUBE STRUCTURE.
 - DASHED LINE INDICATES WHERE EXISTING GRADELINE WOULD BE AT THE NEW BUILDING LINE - SEE GRADING PLAN FOR NEW GRADING.
 - DASHED LINE INDICATES LEVEL OF EXISTING BASEBALL FIELD PARKING LOT NEXT TO NEW PARKING GARAGE.
 - ZING & OPEN BETWEEN TOP OF STOREFRONT GLAZING & UNDERSIDE OF SLOPED GLAZING.
 - DECORATIVE PAINTED STEEL SECURITY GRILLE IN A STEEL FRAME TO FILL OPENING. REFER TO 3/44.20 & 7/46.10 FOR MORE DETAIL.
 - PRECAST CONCRETE SPANDREL PANEL; COLOR #1; FINISH #1; SPANDREL PANELS SPAN COLUMN TO COLUMN.
 - PRECAST CONCRETE, PART OF SPANDREL PANEL ABOVE; COLOR #2 (DARK GRAY); FINISH - SMOOTH (FINISH #1); NOTE: THIS PORTION OF PANEL IS RECESSED 1" FROM TYPICAL PANEL FACE - SEE DETAIL.
 - SIGNAGE - N.I.C.
 - 2" EXPANSION JOINT W/ EXPANSION JOINT FILLER - CUSTOM COLOR. REFER TO 1/46.31 FOR DETAIL.
 - SLOPED PRE-CAST PANEL - TO REMAIN 2" ABOVE FINISHED GRADE.
 - FOUNDATION LEDGE - THICKENED FOUNDATION WALL, SEE STRUCT DWGS. FOR EXACT LOCATIONS.
 - PAINTED TUBE STEEL FRAME.
 - PRE-FINISHED ALUMINUM COLLECTOR AND DOWN PIPE. (REFER TO DETAIL 5/42.30)

DRAWING NOTES

BID PACKAGE	ISSUED	BID PACKAGE	ISSUED

RECORD DATE	DRAWN BY	CHECKED BY	SCALE	DATE
			AS NOTED	10/30/2003

REVISIONS	DATE
1 RECORD DRAWINGS	6/20/05
2	
3	
4	
5	
6	
7	
8	

AGENCY AUTHORIZED AGENT	APPROVED FOR PROGRAM CONCEPT ONLY	DATE
DIVISION OF ENGINEERING	APPROVED FOR PROGRAM CONCEPT ONLY	DATE

PARKING GARAGE No. 2
NORTHERN KENTUCKY UNIVERSITY
 HIGHLAND HEIGHTS, KENTUCKY

PEDESTRIAN BRIDGE - ADD ALTERNATE #1

COMMONWEALTH OF KENTUCKY
 FINANCE AND ADMINISTRATION CABINET
 DEPARTMENT FOR FACILITIES MANAGEMENT
 DIVISION OF ENGINEERING
 FRANKFORT, KENTUCKY

A3.12

REVIEWED DIV. OF ENGR.
 ENGR. FILE NO. PNK00590