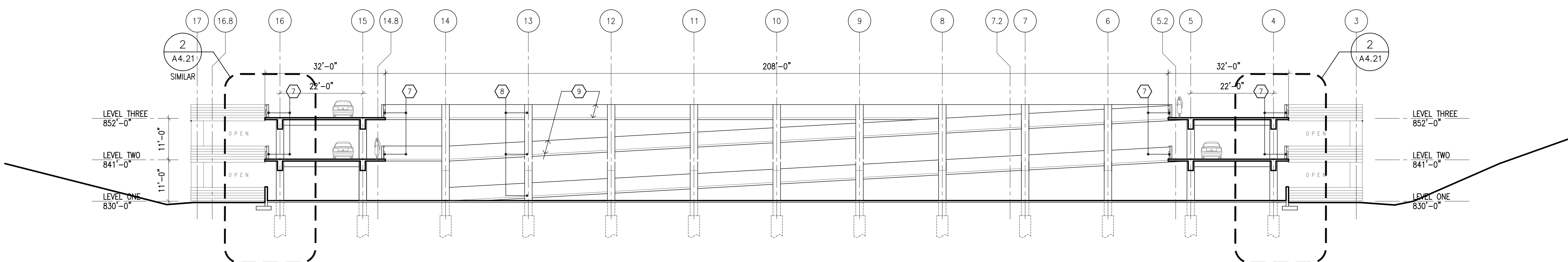


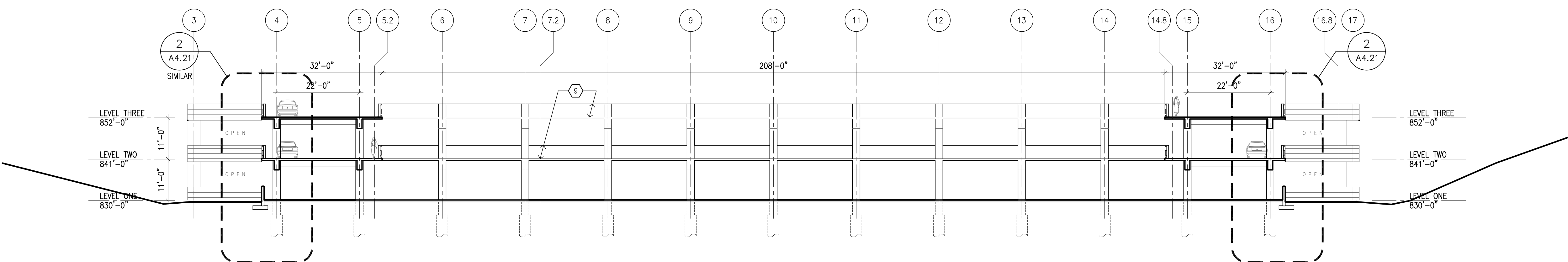
DRAWING NOTES for EXTERIOR ELEVATIONS

NOTES ARE TYPICAL FOR ALL LIKE CONDITIONS, UNLESS NOTED OTHERWISE.

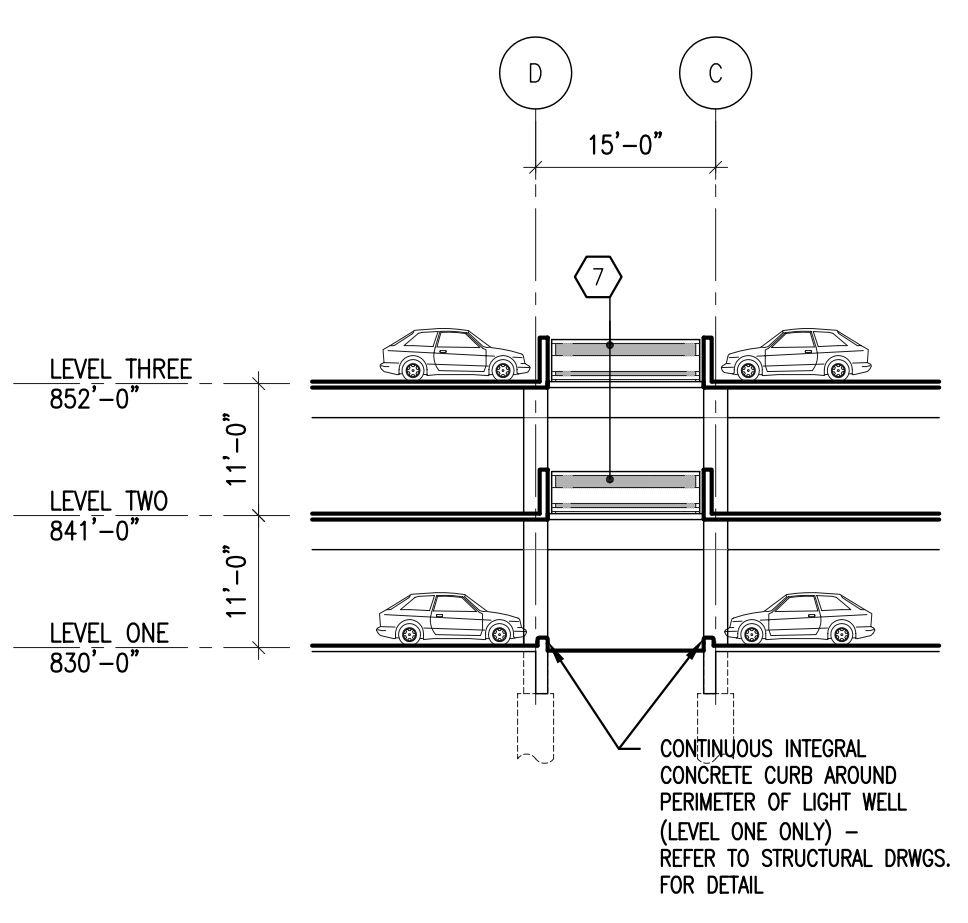
1. PRECAST CONCRETE SPANREL PANEL; COLOR TO MATCH OTHER PRECAST FACADES ON CAMPUS - COLOR #1; FINISH - SMOOTH (FINISH #1); NOTE: THERE IS A POURED-IN-PLACE VEHICLE GUARDRAIL BEHIND PRECAST SPANREL PANELS; SPANREL PANELS SPAN COLUMN TO COLUMN.
2. PRECAST CONCRETE PANEL ON COLUMN; COLOR TO MATCH OTHER PRECAST FACADES ON CAMPUS - COLOR #1; FINISH - SMOOTH (FINISH #1); NOTE: THERE IS A POURED-IN-PLACE VEHICLE GUARDRAIL BEHIND PRECAST SPANREL PANELS; SPANREL PANELS SPAN COLUMN TO COLUMN. NOTE: THIS FINISH #2 IS USED ON EXTERIOR GARAGE SPANREL PANELS WHERE GARAGE IS ANGLED IN PLAN.
3. EXPOSED CONCRETE FOUNDATION.
4. NOT USED
5. PRECAST CONCRETE SPANREL PANEL; COLOR TO MATCH OTHER PRECAST FACADES ON CAMPUS - COLOR #1; FINISH - SMOOTH (FINISH #1); NOTE: THERE IS A POURED-IN-PLACE VEHICLE GUARDRAIL BEHIND PRECAST SPANREL PANELS; SPANREL PANELS SPAN COLUMN TO COLUMN. NOTE: THIS FINISH #2 IS USED ON EXTERIOR GARAGE SPANREL PANELS WHERE GARAGE IS ANGLED IN PLAN.
6. PRECAST CONCRETE PANEL ON COLUMN; COLOR #2 (DARK GRAY); FINISH - SMOOTH (FINISH #1); PANEL IS WIDER THAN STRUCTURAL COLUMN BEHIND - PANEL IS TO BE CLIP-ATTACHED TO COLUMN, SO THAT CLIPS ARE CONCEALED FROM EXTERIOR VIEW OF GARAGE. NOTE: THIS COLOR #2 IS USED ON GARAGE COLUMN PANELS ALONG KENTON DRIVE AT LEVEL ONE OPENING.
7. PAINTED STEEL VEHICULAR AND PEDESTRIAN GUARDRAIL (USED EACH SIDE OF VEHICULAR AISLES @ LIGHTWELLS, AND @ CONNECTING POINTS TO FUTURE GARAGE CONSTRUCTION WHERE IT WILL BE EASILY REMOVABLE).
8. EXPOSED POURED-IN-PLACE CONCRETE GARAGE STRUCTURE. NOTE: THE LIGHTWELL TO BE CONSTRUCTED IN THIS PHASE (PHASE I) WILL ALSO HAVE THIS SAME EXPOSED POURED-IN-PLACE GARAGE STRUCTURE VISIBLE WITHIN THE LIGHTWELL.
9. AT LIGHTWELL (FUTURE LIGHTWELL @ WEST ELEVATION & LIGHTWELL TO BE CONSTRUCTED IN PHASE I), BOTH VEHICULAR & PEDESTRIAN GUARDRAIL TO BE POURED-IN-PLACE CONCRETE.
10. NOTE: NO VEHICULAR GUARDRAILS SHOWN ON LEVEL ONE, WHERE FUTURE CONSTRUCTION IS TO OCCUR - PROVIDE WHEEL BLOCKS.
11. PRECAST CONCRETE INFILL PANEL - SAME AS #1 ABOVE.
12. PRECAST CONCRETE INFILL PANEL - SAME AS #5 ABOVE.
13. NEW GRADE LINE. SEE GRADING PLAN FOR ANY CHANGE BETWEEN EXISTING & NEW GRADES.
14. DASHED LINE INDICATES EXISTING KENTON DRIVE ROADWAY DIRECTLY IN FRONT OF THIS ELEVATION.
15. PAINTED STEEL VEHICULAR GUARDRAIL & VISUAL SCREEN (USED @ LEVEL TWO OF KENTON DRIVE ELEVATION). INCLUDE TWO WELL-TYPE LANDSCAPE UPLIGHTS IN FRONT OF EACH SCREEN.
16. PRE-FINISHED ALUM. BRISE-SOLEIL (SUNSCREEN) - APPROX. 4' DEEP. (ALTERNATE #2)
17. PRE-FINISHED ALUM. TUBE COLUMNS SUPPORTING TRELLIS. TUBE COLUMNS MOUNTED ATOP STUB COLUMNS @ TOP LEVEL OF GARAGE.
18. LIGHT FIXTURES ILLUMINATING UNDERSIDE OF BRISE-SOLEIL AND PARKING AREA.
19. ALUMINUM CURTAINWALL SYSTEM W/ CLEAR SINGLE-GLAZING, SUPPORTED FROM PRE-CAST CONCRETE PANELS. PRE-CAST TO BE ENGINEERED FOR CURTAINWALL ATTACHMENT AND BE CAST WITH STAINLESS STEEL PLATES FOR CURTAINWALL ANCHORAGE.
20. MASONRY ELEVATOR SHAFT. STRUCTURAL GLAZED BLOCK W/ MATTE COLOR FINISH (COLOR - RED TO MATCH SIGNATURE RED METAL ROOFS ON CAMPUS). PROVIDE PREFIN. METAL ALUMINUM PARAPET COPING.
21. PRE-ENGINEERED STRUCTURAL ALUMINUM SLOPED GLAZED SKYLIGHT/CANOPY SYSTEM ON PAINTED STRUCTURAL STEEL TUBE-FRAME.
22. ALUMINUM CURTAINWALL SYSTEM W/ CLEAR SINGLE-GLAZING, SUPPORTED FROM PAINTED STEEL TUBE STRUCTURE.
23. THIS DASHED LINE INDICATES WHERE EXISTING GRADELINE WOULD BE AT THE NEW BUILDING LINE - SEE GRADING PLAN FOR NEW GRADING.
24. THIS DASHED LINE INDICATES LEVEL OF EXISTING BASEBALL FIELD PARKING LOT NEXT TO NEW PARKING GARAGE.
25. OPEN BETWEEN TOP OF STOREFRONT GLAZING & UNDERSIDE OF SLOPED GLAZING.
26. DECORATIVE PAINTED STEEL SECURITY GRILLE IN A STEEL FRAME TO FILL OPENING. REFER TO 3/A4.20 & 7/A6.10 FOR MORE DETAIL.
27. PRECAST CONCRETE SPANREL PANEL; COLOR #1; FINISH #1; SPANREL PANELS SPAN COLUMN TO COLUMN.
28. PRECAST CONCRETE, PART OF SPANREL PANEL ABOVE; COLOR #2 (DARK GRAY); FINISH - SMOOTH (FINISH #1); NOTE: THIS PORTION OF PANEL IS RECESSED 1" FROM TYPICAL PANEL FACE - SEE DETAIL.
29. SIGNAGE - N.I.C.
30. 2" EXPANSION JOINT W/ EXPANSION JOINT FILLER - CUSTOM COLOR. REFER TO 1/A6.31 FOR DETAIL.
31. SLOPED PRE-CAST PANEL - TO REMAIN 2" ABOVE FINISHED GRADE.
32. FOUNDATION LEDGE - THICKENED FOUNDATION WALL, SEE STRUCT DWGS. FOR EXACT LOCATIONS.
33. PAINTED TUBE STEEL FRAME.
34. PRE-FINISHED ALUMINUM COLLECTOR AND DOWN PIPE. (REFER TO DETAIL 5/A2.30)



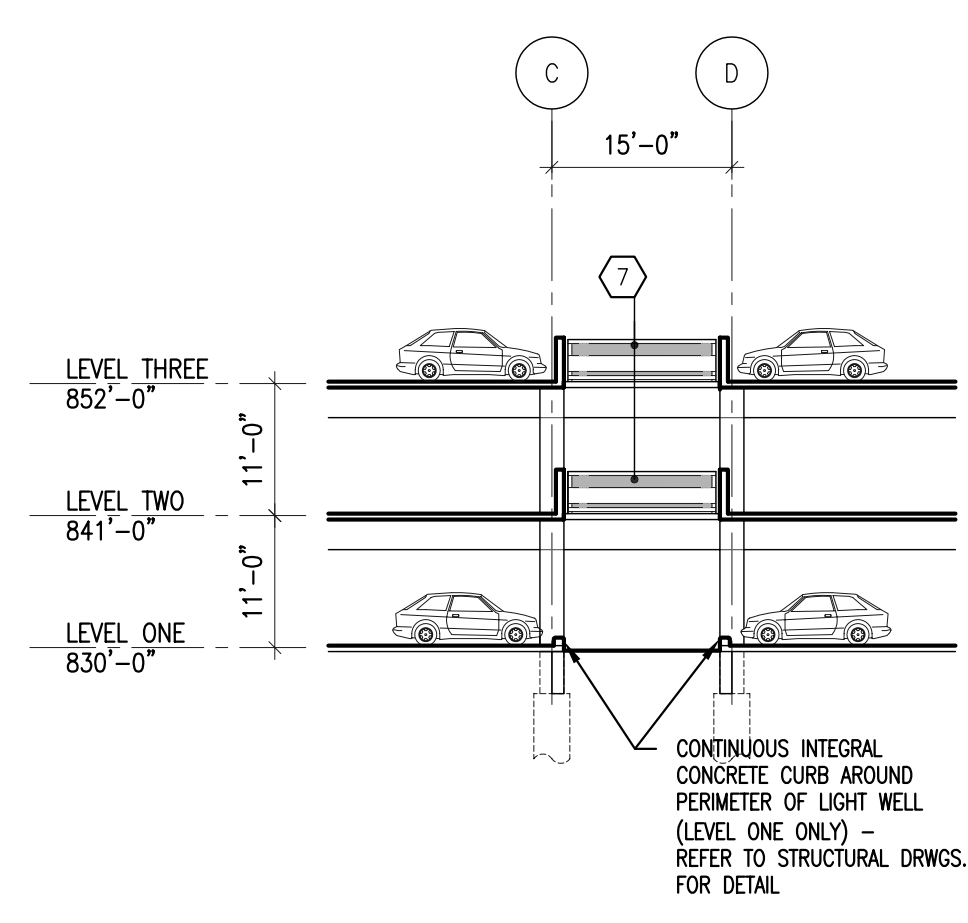
1 SECTION 4 (LIGHTWELL WEST ELEVATION) 1/16" = 1'-0"



2 SECTION 5 (LIGHTWELL EAST ELEVATION) 1/16" = 1'-0"



3 SECTION 6 (LIGHTWELL SOUTH ELEVATION) 1/16" = 1'-0"

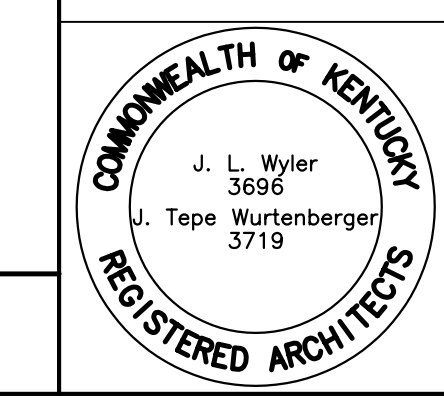


4 SECTION 7 (LIGHTWELL NORTH ELEVATION) 1/16" = 1'-0"

5 NOT USED

DRAWING NOTES

BID PACKAGE ISSUED BID PACKAGE ISSUED		RECORD DATE DRAWN BY CHECKED BY A&E FILE NO. SCALE DATE		PARKING GARAGE No. 2 NORTHERN KENTUCKY UNIVERSITY HIGHLAND HEIGHTS, KENTUCKY		DRAWING NO. A4.11
REVISIONS 1 RECORD DRAWINGS 6/20/05 2 AS NOTED 3 4 5 6 7 8		DATE 6/20/05 10/30/2003		BUILDING SECTIONS COMMONWEALTH OF KENTUCKY FINANCE AND ADMINISTRATION CABINET DEPARTMENT FOR FACILITIES MANAGEMENT DIVISION OF ENGINEERING FRANKFORT, KENTUCKY		REVIEWED DIV. OF ENGR. ENGR. FILE NO. PNKU0590
AGENCY AUTHORIZED AGENT DIVISION OF ENGINEERING		APPROVED FOR PROGRAM CONCEPT ONLY		DATE		APPROVED FOR PROGRAM CONCEPT ONLY



J:\17\2880-00 Parking Garage\phase 4\drawings\A4-11 & A4-11.dwg - Jun 05, 2005 - 3:44pm - (C) Champlin/Haupt - enr