

**PRECONSTRUCTION MEETING MINUTES**

DATE January 19, 2012

FROM Michael Jacobs, AIA, CID, LEED AP
Principal Architect

TO Rob Knarr, PE (for distribution to NKU)
Project Manager

SUBJECT **Campus Recreation Center**
Northern Kentucky University
Highland Heights, KY

1a

COMMENTS: The meeting convened at 9:00 am this date with the Project Executive Committee (PEC) in Room SU 107 B&C of the NKU Student Union. All parties then introduced themselves, whom they represented, and their role in the project. See attached sign in sheets, which include their telephone number and email address.

Michael Jacobs, representing the design team, briefly thanked those responsible for awarding this project to this team and reiterated the team's commitment to this important project.

This writer then passed out the attached "Program Session #1" agenda, which was used as a guideline for the day's activities. A draft copy of an agenda for all of the future programming sessions was also reviewed. The following issues were discussed and additional comments are presented below:

1. Future meeting dates were established for the entire Programming, Schematic Design, and Design Development Phases as follows:

PROGRAMMING PHASE (9 weeks including Owner Review & Approval to Proceed)

#1 1/19/12 Kick-Off (Omni/Cannon)

#2 2/8/12 thru 2/10/12 Focus Groups for first 1.5 days (Omni/Cannon) followed by detailed programming with PEC for last 1.5 days (Omni/Cannon/CMTA/C-H).

#3 2/22/12 - 2/23/12 (Omni/Cannon/CMTA/C-H/BFMJ/VLA)

#4 3/15/12 - 3/16/12 Program Complete. (Omni/Cannon/CMTA/C-H/BFMJ/VLA)

**MEETING MINUTES**

Page 2

SCHEMATIC DESIGN PHASE (12 weeks including Owner Review & Approval to Proceed) (Omni/Cannon/CMTA/C-H/BFMJ/VLA)

#5 4/4/12 - 4/5/12 (Omni/Cannon/CMTA/C-H/BFMJ/VLA)

#6 4/25/12 - 4/26/12 (Omni/Cannon/CMTA/C-H/BFMJ/VLA)

#7 5/16/12 - 5/17/12 (Omni/Cannon/CMTA/C-H/BFMJ/VLA)

#8 6/6/12 - 6/7/12 (Final) (Omni/Cannon/CMTA/C-H/BFMJ/VLA/Sextant/RPA)

DESIGN DEVELOPMENT PHASE (12 Weeks including Owner Review & Approval to Proceed)

#9 6/20/12 - 6/21/12 (Omni/Cannon/CMTA/C-H/BFMJ/VLA)

#10 7/11/12 - 7/12/12 (Omni/Cannon/CMTA/C-H/BFMJ/VLA/Sextant)

#11 8/1/12 - 8/2/12 (Omni/Cannon/CMTA/C-H/BFMJ/VLA)

#12 8/22/12 - 8/23/12 (Omni/Cannon/CMTA/C-H/BFMJ/VLA/Sextant/RPA)

CONTRACT DOCUMENT PHASE (TBA)

2. Agendas for future meetings will be adjusted.
3. All correspondence and emails must include the Project Title (NKU-CRC-Subject) and be distributed throughout the project to Rob Knarr and Michael Jacobs. Mary Paula Schuh will be the lead contact during the Programming Phase. Appropriate individuals may be copied on emails. Rob will forward email on the NKU side as appropriate to the PEC and the Project Steering Committee (PSC).
4. The overall Project Schedule was also distributed and reviewed based upon the timeline noted by weeks in the RFP. The 33 month construction assumes portion assumes that the new construction will run through completion prior to beginning renovations to Albright. This will need refinement once the CM is on board. It is possible to reduce this time line to correspond to the academic calendar for a summer move-in. The CM selection Process will begin in the months ahead, and it is anticipated that they will be on board in the Schematic design Phase.
5. Ken Ramey and other members of the PEC emphasized the importance of student involvement, and the need to make schedule adjustments to cater to that priority when possible. This project will be a Process-Driven approach driven by involvement of students, faculty and staff through focus groups. While the need to complete this project in a timely manner is essential, the process should not be compromised by schedule. Jeff Waple, Dean of Students, echoed the enormous need for this upgrade. A representative of NKU Athletics Department will be added to the PSC.
6. Design Issues that will drive the project include:
 - A. Budget & Schedule Control
 - B. Development of clear interior and exterior wayfinding for the current campus configuration as well as the flexibility for the future campus growth to the south and east.
 - C. Reconcile the Program and the budget in the programming phase.

**MEETING MINUTES**

Page 3

- D. Establish a Phasing Plan for new construction and renovation. New addition programming should allow for everyday operations of Recreation Center (with some areas possibly being limited) during renovation of existing building.
- E. Develop an understanding of the transformational goals of the project.
7. Facebook and twitter activity has been started by NKU. A QR code for distribution will also be established soon by NKU's Chris Cole (Director of Communications).
 8. Omni Architects and Cannon Design presented an overview to the programming process. Reed will prepare an overview narrative to explain the design process on the NKU media web site.
 9. Reed noted that drawings (plans and renderings), and both analog and digital 3-D models would be utilized during the design process to communicate concepts on the web site.
 10. This writer noted that the programming phase is that moment in a project where so much is possible, and that over time decisions are made that narrow down the realm of options. It was suggested we dream big during this phase, knowing that we will need to narrow down options and set priorities in order to stay within our fixed budget. The decision-making curve is heavily weighted towards possibilities in these early phases.
 11. Mary Paula Schuh noted that in 2009, upon completion of the new campus masterplan, the Campus Recreation Center (CRC) became prioritized. The design team should refer to the full master plan report on the campus web site. The Council of Postsecondary Education (CPE) ranked NKU the lowest of Kentucky universities for intramural recreational space per capita. The transformative power of better facilities has been witnessed on campus in recent years.
 12. During the recession, NKU has continued to grow in size at approximately 1 to 2% per year. The Council on Post Secondary Education has established a goal for NKU to reach 26,000 students by the year 2020. While this target may have changed, the facility should be planned for both the current needs as well as the future needs of NKU. It was suggested that Cannon Design identify the size of Recreation Centers for campuses of comparable size to NKU. Noting that this new addition should anticipate an expansion, it would be helpful to look at the ultimate size in gross square feet (GSF) at a 20,000 and 25,000 student enrollment level.
 13. Under the current thinking, a North entrance would be the most logical entrance. Eventually an East side and possibly a South Side approach should be considered (15-year plan). The addition has been anticipated to be on the East side. Rob Knarr will confirm the site limits based upon the baseball field to remain. The batter cages currently straddle a logical building line on the East side of the site.
 14. The new \$92M Health Innovations Center is the next targeted project for NKU. The COHP will be relocated to this new facility once it is completed (approximately 3-5 years out). However, they will remain on Level 2 and 3 until that time. The current concept for levels 2 & 3 includes a full renovation of mechanical systems. Additional needs include ADA accessibility, Life-Safety Improvements, and other systems as required in a code upgrade for major renovations. CMTA will meet with NKU M&O prior to the scheduled M&O meeting in Session #2.

**MEETING MINUTES**

Page 4

15. The Kinesiology Department in the Albright Center will remain as located. A special focus group session will be set up with the Kinesiology faculty. Mary Paula distributed a floor plan with users assigned to each room. Cannon Design has started building a Revit Building Information Model (BIM) and will populate this information with the room names.
16. Omni and VLA have prepared a Site Survey Request for Proposal (RFP) with Rob Knarr, and this has been issued. A price has been submitted and is under review. A second proposal may be obtained. This will be needed soon if we decide to proceed with the ball fields as an early bid package.
17. Omni and BFMJ have prepared a geotechnical Report RFP with Rob Knarr. Rob will request several proposals, and at Steve Nienaber's suggestion, add one additional boring in the ball field in case fill material is needed for the new ball fields.
18. It has been assumed that the new addition will be established at the existing lower level of the Albright Center, and therefore, cut material can be utilized from the parking lot for the new Intramural fields that are on the adjacent site. Cannon Design will take this into consideration during this phase, so that Vivian Llambi can estimate the cost difference. If we utilize this cut, the expansive clay most likely will need conditioning to be used as fill. The parking lots and restroom building on the other side of Johns Hill Road may want to be located on natural cut, and not fill.
19. Funding for a competition size pool was being considered at the time of the architect/Engineer (A/E) selection. That outside funding source is no longer anticipated. The recreational pool is still on the table. Matt Hackett noted during the subsequent tour that NKU has long-term leases with local High Schools to lease space in the existing pool.
20. The design team referenced several times the March 14, 2011 Expansion Study, and the January 26, 2011 budget. While these documents may be close to what is under consideration, the team was reminded that this document was not meant to serve as the program. The programming process will result in the ultimate program components. Reed asked if the Student Referendum explicitly required any program components. Michelle Forienza noted that there were no "required" components.
21. A reference was made to the indoor turf field shown in the study. This also remains on the table, but a Multi Activity Court (MAC), appears to be more appropriate.
22. It was noted that the renovations on the second and third floor of Albright Center should be scheduled to occur during the summer season when school is not in session.
23. Athletics' Department does utilize the Rehabilitation suite in Room 218.
24. George Nikolajevich noted that the call for change, A.K.A. the transformation, should also have meaning as it relates to solutions. The ultimate reconciliation of the program and the budget will need to be reconciled during this phase.
25. Reed Voorhees indicated that he would transfer Mary Paula's initial program into his standard spreadsheet that will also assign cost per square footage benchmarks for each level of renovation (Hi-Med-Low), new Construction, and Pools. This will be an active spread-sheet that will allow the committee to review and modify at each work session.
26. Jeff Waple expressed a desire that this facility would anchor this end of the campus and serve as a new "Hub" of student activity.

**MEETING MINUTES**Page 5

27. It was noted that the original design for Albright had included clerestory windows for daylighting that were deleted due to value-engineering. She will forward some additional archival information on the facility.
28. The schedule was again discussed, and NKU stressed that they want to do this right.
29. While it was noted that many of the components of a Recreational Center are standard in size, it is how these go together that is important. NKU is a very collegial campus, and process is important.
30. NKU Athletics will likely use the facility on an as-needed basis, so Chris Hafling a representative from NKU Athletics has been added to the project steering committee. NKU does not anticipate including any programming elements geared solely & specifically to NKU Athletics.
31. Omni Architects will host an FTP site for large document exchange between consultants and for Rob Knarr to utilize.
32. Cannon Design will utilize their "cloud" technology for hosting the Revit (BIM) model.
33. This project will promote NKU's commitment to sustainability by reaching LEED silver with the USGBC.

The meeting adjourned at approximately 12:00 pm.

**MEETING MINUTES**

Page 6

Meeting minutes have been prepared to establish a record of the meeting and information shared. The information presented herein shall in no way supersede or modify the Contract Documents. Should you have any questions, comments or corrections, please forward to Omni Architects within three days.

Attachments: Sign-in Sheet (2 pages)
Meeting Agenda(s) Draft
Master Project Schedule (Draft)
Project Team Members
Albright Users by Room Number
NKU Draft Program (1/18/12)

cc:	Larry Blake	NKU
	Steve Nienaber	NKU
	Mary Paula Schuh	NKU
	Michael Jacobs	Omni Architects
	Don Adams	Omni Architects
	Jay Copley	Omni Architects
	George Nikolajevich	Cannon Design
	Reed Voorhees	Cannon Design
	David Body	Cannon Design
	John McAlister	Cannon Design
	Steve Crocker	Counsilman-Hunsaker
	Tony Hans	CMTA
	Peyman Jahed	BFMJ
	Vivian Llambi	VLA
	Mark Gillis	The Sextant Group
	Robert Pass	RP+A
	Correspondence File	

MWJ/mwj

AGENDA - **PROJECT KICKOFF MEETING Session #1** January 19, 2012 Day 1 of 1

9:00 - 1:00 Project Executive Committee (PEC) Meeting 1a (SU 107 B&C)

- 1.) Introductions - NKU / Omni / Cannon
 - Roles and Responsibilities
- 2.) Project Overview
 - History / Background
 - Goals
 - Priorities
 - Expectations - How will success be defined?
 - Building Operations Performance
- 3.) Project Process
 - Schedule / Future Meeting Dates / Academic Calendar
 - Athletic Field Timeline
 - Pool Options
- 4.) Programming Methodology
 - Needs Analysis
 - Student Input (Extent?)
 - Focus Group Sessions
 - Intercept Interviews
 - Prioritization
 - Building Component Survey - Images
 - Department Needs
- 5.) Format - Program Examples
- 6.) Program / Budget Reconciliation
- 7.) Facility Tours (3-4 hour drive)
- 8.) Open Issues Log (Tracking)

PM **1:00 - 2:00 Break**

2:00-5:00 Project Steering Committee (PSC) Meeting 1b (SU 107 B&C)

- 1.) Introductions - NKU / Omni / Cannon
- 2.) Project Overview
 - Goals, objectives, priorities
 - Expectations - How will success be defined?
- 3.) Programming Methodology
 - Needs Analysis
 - Prioritization
 - Benchmarking
 - Cost Data

**NORTHERN KENTUCKY UNIVERSITY
CAMPUS RECREATION CENTER EXPANSION/RENOVATION**

4.) Building Components

- Trends & Peer Institutions
- Issues

5.) Response/Program Discussion

6.) Next Steps

5:00 - 7:00 Tour Existing Facility with some members of the Project Executive Committee

SCHEDULED DATES:

PROGRAMMING PHASE (9 weeks including Owner Review & Approval to Proceed) Meetings:

#1 1/19/12 Kick-Off (Omni/Cannon)

#2 2/8/12 thru 2/10/12 Focus Groups for first 1.5 days (Omni/Cannon) followed by detailed programming with PEC for last 1.5 days (Omni/Cannon/CMTA/C-H).

#3 2/22/12 - 2/23/12 (Omni/Cannon/CMTA/C-H/BFMJ/VLA)

#4 3/15/12 - 3/16/12 Program Complete (Omni/Cannon/CMTA/C-H/BFMJ/VLA)

SCHEMATIC DESIGN PHASE (12 weeks including Owner Review & Approval to Proceed) (Omni/Cannon/CMTA/C-H/BFMJ/VLA)

#5 4/4/12 - 4/5/12 (Omni/Cannon/CMTA/C-H/BFMJ/VLA)

#6 4/25/12 - 4/26/12 (Omni/Cannon/CMTA/C-H/BFMJ/VLA)

#7 5/16/12 - 5/17/12 (Omni/Cannon/CMTA/C-H/BFMJ/VLA)

#8 6/6/12 - 6/7/12 (Final) (Omni/Cannon/CMTA/C-H/BFMJ/VLA/Sextant/RPA)

DESIGN DEVELOPMENT PHASE (12 Weeks including Owner Review & Approval to Proceed)

#9 6/20/12 - 6/21/12 (Omni/Cannon/CMTA/C-H/BFMJ/VLA)

#10 7/11/12 - 7/12/12 (Omni/Cannon/CMTA/C-H/BFMJ/VLA/Sextant)

#11 8/1/12 - 8/2/12 (Omni/Cannon/CMTA/C-H/BFMJ/VLA)

#12 8/22/12 - 8/23/12 (Omni/Cannon/CMTA/C-H/BFMJ/VLA/Sextant/RPA)

NORTHERN KENTUCKY UNIVERSITY
CAMPUS RECREATION CENTER EXPANSION/RENOVATION

AGENDA – FOCUS GROUP MEETINGS Session #2a: Date February 8,2012 Day 1 of 3

9:00 am – 10:00 am	Faculty and Staff	SU 104
10:30 am – 11:30 am	Campus Recreation Staff	SU 104
Noon – 1:00 pm	Kinesiology Department	SU 104
1 pm – 2 pm	Break	
2:00 pm – 3:00 pm	Students	SU 104
3:30 – 4:30 pm	Students	SU 104
5:00 pm – 6:00 pm	Dinner	Norse Commons
6:00 pm – 7:00 pm	Students	Norse Commons

AGENDA – FOCUS GROUP MEETINGS Session #2b: Date February 9,2012 Day 2 of 3

8:30 – 9:30 am	M & O Staff	SU 302	CMTA
9:30am – 10:30 am	Faculty and Staff	SU 302	
10:45 am – noon	Intramural Field	SU 302	
Noon – 1pm	Break		
1 pm – 2 pm	Students	SU 302	
2:30 pm – 3:30 pm	Students	SU 302	
4:00 pm -5:00 pm	Students	Otto Budig Theater	
5 pm – 6 pm	Dinner	Callahan Hall	
6 pm – 7 pm	Students	Callahan Hall	

AGENDA –PROJECT EXECUTIVE COMMITTEE (PEC) MEETINGS Session #2c: Date February 10, 2012 Day 3 of 3

8:00 – 10:00 am	Pool Discussion	SU 107 B&C	Counsilmman-Hunsaker
10:00am – 12:00 pm	Summary/Next Steps	SU 107 B&C	

**NORTHERN KENTUCKY UNIVERSITY
CAMPUS RECREATION CENTER EXPANSION/RENOVATION**

QUESTIONS - STUDENT FOCUS GROUP DISCUSSION

PARTICIPANT BACKGROUND:

Quick rise of hands for some general background on representation –

- Who here is a: Freshman?
Sophomore?
Junior?
Senior?
Graduate Student
Part time student?
- Who lives on campus? Off campus? If off - how do you get to campus and where do you park (bike/car)?
- Who has used the existing recreation center at one time or another?
- Of those that have used the existing recreation center at some point in time....
 - Who uses the facility at least once a month?
 - At least once per week?
 - 1 to 3 times per week?
 - More than 3 time per week?
- Who is or has been involved in Club Sports?
- Who is or has been involved in Intramural sports?
- Who is a Kinesiology Major? PE major? Others - Athletic Training, Exercise Science, Physical Education; minors in Health Education, Physical Education and Sports Medicine. Wellness program?
- Who belongs to a private recreation / fitness facility? Why?
- Who has children? Family?

KNOWLEDGE OF CAMPUS RECREATION FACILITIES / COMPONENTS:

- What do you like about the existing recreation center at NKU?
- What do you dislike about the existing recreation center at NKU?
- Are there programs or activities that cannot be accommodated (or that have restrictions) due to inadequate facilities?
- Who has visited rec centers on other campuses? Which ones?
- What did you like about the facilities?
- What did you dislike about the facilities?
- Amenities that would help interaction between faculty, staff and students?
- Amenities could accommodate children / families?

RECREATION COMPONENTS SLIDE SHOW:

- Discussion about what people saw that they liked and what they saw that they dislike (after each component or at completion – depending on time).
- What are the top three components you'd like to see in a renovated / enlarged recreation center?
- What qualities do you think should be exhibited in the recreation center design (openness, light, intimate/quiet areas, etc).
- What sorts of things come to mind to convey NKU and what sets NKU apart from other Universities!

QUESTIONS - FACULTY AND STAFF FOCUS GROUP DISCUSSION

PARTICIPANT BACKGROUND:

Quick raise of hands for some general background on representation –

- Who is faculty, who is in a staff position?
- What department do you work with? What is your discipline?
- Are you full time, part time?
- Who has used the existing recreation center at one time or another?
- Of those that have used the existing recreation center at some point in time....
 - Who uses the facility at least once a month?
 - At least once per week?
 - 1 to 3 times per week?
 - More than 3 time per week?
- Who belongs to a private recreation / fitness facility? Why?
- Who has children?

KNOWLEDGE OF CAMPUS RECREATION FACILITIES / COMPONENTS:

- What do you like about the existing recreation center at NKU?
- What do you dislike about the existing recreation center at NKU?
- Are there programs or activities that cannot be accommodated (or that have restrictions) due to inadequate facilities?
- Who has visited rec centers on other campuses?
- Which ones?
- What did you like about the facilities?
- What did you dislike about the facilities?
- Can you list the facility needs that have been reported or mentioned by students, faculty, and staff?
- What amenities would you like to see that would make the facility more “friendly” to faculty and staff?
- Amenities that would help interaction between faculty, staff and students?
- Amenities could accommodate children / families?

RECREATION COMPONENTS SLIDE SHOW:

- Discussion about what people saw that they liked and what they saw that they dislike (after each component or at completion – depending on time).
- What are the top three components you’d like to see in a renovated / enlarged recreation center?
- What qualities do you think should be exhibited in the recreation center design (openness, light, intimate/quiet areas, etc)?
- What sorts of things come to mind to convey NKU and what sets NKU apart from other Universities?

QUESTIONS – CAMPUS RECREATION STAFF FOCUS GROUP DISCUSSION

PARTICIPANT BACKGROUND:

General background from staff perspective –

- What are your positions? Full time, Part time?
- How long have you worked at the recreation center?
- Hours of operation?
- Peak times during the day?
- Relationship with other departments
Kinesiology, Athletics, Wellness, PE, Etc.
- What opportunities existing to enhance collaboration with these, other departments, groups?
- What do you like about the existing recreation center at NKU?
- What do you dislike about the existing recreation center at NKU?
- How and where do you access the building from?

KNOWLEDGE OF CAMPUS RECREATION FACILITIES / COMPONENTS:

- What do you like about the existing recreation center at NKU?
- What do you dislike about the existing recreation center at NKU?
- Are their programs or activities that cannot be accommodated (or that have restrictions) due to inadequate facilities? Students, Faculty / staff / Outside groups.
- What do you hear from the students? Likes, dislikes, needs, wishes, etc?
- Who has visited recreation centers on other campuses?
- Which ones?
- What did you like about those facilities?
- What did you dislike about those facilities?
- Can you list the facility needs that have been reported or mentioned by students, faculty, and staff?
- What amenities would you like to see that would make the facility more “friendly” to faculty and staff?
- Amenities that would help interaction between faculty, staff and students?
- Amenities could accommodate children / families?

RECREATION COMPONENTS SLIDE SHOW:

- Discussion about what people saw that they liked and what they saw that they dislike (after each component or at completion – depending on time).
- What are the top three components you’d like to see in a renovated / enlarged recreation center?
- What qualities do you think should be exhibited in the recreation center design (openness, light, intimate/quiet areas, etc)?
- What are some of your greatest concerns, goals for a renovated, expanded facility?
- What sorts of things come to mind to convey NKU and what sets NKU apart from other Universities?

AGENDA – **Session #3a:** Date February 22, 2012 Day 1 of 2

Project Executive Committee Meetings (Area Summary/Budget Modeling)

9:00 am – 11:00 am	9:00 am – 11:00 am	Site Design/ Athletic Field Meeting (Omni / Cannon / VLA)
		<ul style="list-style-type: none">• Parking / 2000 SF Shelter• Turf Fields• Site Survey• Geotechnical Report• Site Options for Sustainability

11 am – 12 pm **Break**

Project Executive Committee Meetings (Area Summary/Budget Modeling)

12:00 - 12:30 pm	Kinesiology / Classrooms / Meeting Rooms / Wellness
12:30 - 1:00 pm	Wayfinding / Common Spaces / Lobby /Control / Juice Bar
1:00 – 1:30 pm	Administration /Break / Laundry / First Aid
1:30 – 2:00 pm	Gym / Storage / Track
2:00 - 2:30 pm	MAC & Storage
2:30 – 3:00 pm	Existing & New Pool
3:00 – 3:30 pm	Locker Rooms / Showers /Wet & Dry / Staff & Student
3:00 – 3:30 pm	Racquetball – Squash? / Bouldering vs. Climbing
4:00 – 4:30 pm	Group Exercise / Aerobics /Wellness/ Spinning / Sports Club / Types
3:30 – 4:00 pm	Fitness / Free Weights / Cardio / Circuit
4:30 – 5:00 pm	Outdoor Recreation

AGENDA – **Session #3b:** February 23, 2012 Day 2 of 2

Project Executive Committee Meetings (Area Summary/Budget Modeling) Continued

9:00 -11:00 am	Review 3 Program Options to meet budget
10:00 -11:00 am	Evaluate Options for Pro's + Con's / Suggest Priorities
11:00 – 12:00 pm	Prepare presentation for Project Steering Committee

12 pm – 1 pm **Break**

Project Steering Committee Meetings (Status Report Area Summary/Budget Modeling)

NORTHERN KENTUCKY UNIVERSITY
CAMPUS RECREATION CENTER EXPANSION/RENOVATION

1:00 pm – 3:30 pm Discussion on Focus Group Findings / Area Summary / Budget / Prioritization
3:30 pm – 5:00 pm **Project Executive Committee Wrap-Up (Open Issues - Next Steps)**

AGENDA - PROJECT MEETING Session #4a March 15, 2012 Day 1 of 2

9:00 - 12:00 Project Executive Committee Meeting (PEC)

- 1.) Space Summary - NKU / Omni / Cannon / CH / CMTA/ VLA / BFMJ +
 - Area Calculations
 - Budget Modeling
 - Options
 - Priorities
 - Expectations - How will success be defined?
 - Building Operations Performance
- 2.) Project Process
 - Schedule
 - Athletic Field Timeline
 - Pool Options
 - Renovation Issues
 - Systems Integration

12:00 – 1:00 Break

9:00 - 12:00 Project Steering Committee Meeting (PSC)

- 1.) Space Summary - NKU / Omni / Cannon / CH / CMTA/ VLA +
 - Area Calculations
 - Budget Modeling
 - Options
 - Priorities
 - Expectations - How will success be defined?
 - Building Operations Performance
- 2.) Project Process
 - Schedule
 - Athletic Field Timeline
 - Pool Options
 - Renovation Issues
 - Systems Integration

AGENDA - **PROJECT MEETING Session #4b** March 16, 2012 Day 2 of 2

1.) Finalize Space Summary - NKU / Omni / Cannon / CH / CMTA/ VLA +

- Feedback on PSC Meeting from 2/15/12
- Area Summary
- Confirm Budget
- Open Options
- Identify Priorities
- Building Operations Performance

2.) Project Process

- Confirm A/E Schedule & Phasing
- Confirm Construction Phasing
- Athletic Field Timeline
- Renovation Sequence
- Construction Manager
- Code Implications
- Implications for Sustainability

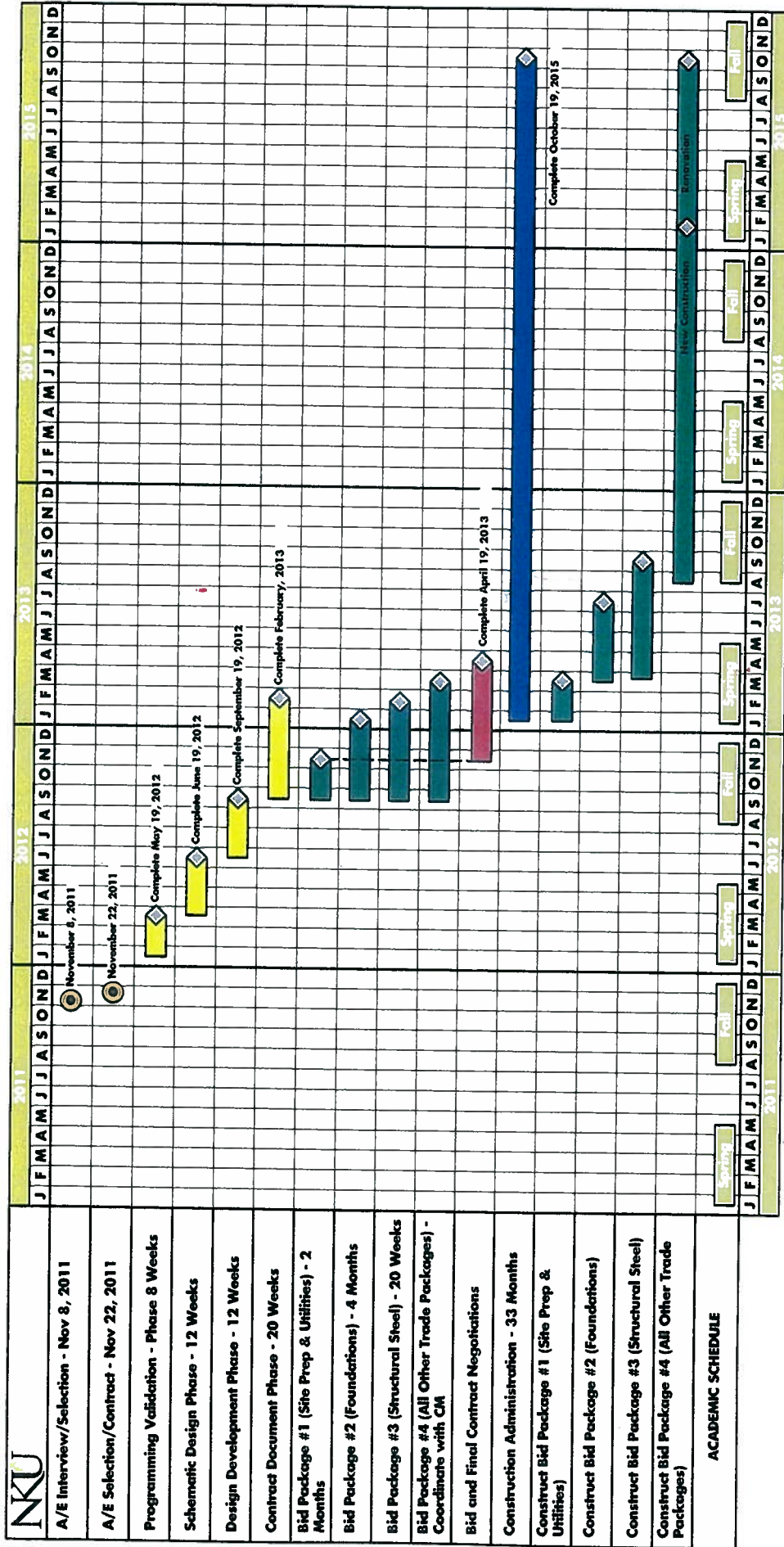
Omni ARCHITECTS
CANNONDESIGN

Time:

9:00 AM

EMAIL

[illegible]



PHASE I Assumes New Construction (Approx. 110,000 SF) for 22 Months. Bid Package #1 Ground Breaking January 19, 2013

PHASE II Assumes Renovations (Approx. 65,000 SF First Floor) of 8 Months/ Based on COHP remaining on Level 2/3)

PHASE III Artificial Turf Fields & Support Facilities (Concurrently)

* Assumes Project Approved by Legislature by April 15, 2012



Prime Architect
OMNI
ARCHITECTS

Michael Jacobs, AIA CID
LEED AP
Principal-In-Charge & Project Manager

Don Adams, AIA LEED AP
Project Architect

J. Alvin Warner, PE
Construction Administration



Structural Engineer
BFMJ, INC.

Ethan Buell, PE SECB
Principal-In-Charge

Peyman Jahed, PE
Project Manager and
Structural Engineer



AV/IT & Acoustics
The Sextant Group

Mark Gills, CTS
Principal-In-Charge and Lead for Audiovisual
Technologies

Timothy Kelly, RCDD-NTS CTS
Information Technologies Lead

Greg Coudreit, CTS LEED AP BD+C
Acoustics Lead



Cost Estimator
Robert Pass + Assoc.

Robert Pass
Architectural, Structural & Civil Estimator

John W. Wolf
Senior Mechanical & Electrical Estimator

CANNONDESIGN

Recreation Consultant
CANNON DESIGN

Reed Voorhees, AIA LEED AP
Principal-In-Charge for Sports Design

David Body, FAIA RIBA
Sports Programmer and Design Reviewer

George Z. Nikolajevich, FAIA
Senior Project Designer

Richard Bacino, RA
Project Manager



M/E/P Engineer
CMTA ENGINEERS

Tony Hans, PE RCDD LEED AP
Principal-In-Charge

Jess Farber, PE LEED AP HDP CxA
Project Manager

Tracy Steward, LEED AP
Mechanical Engineer

Brian Baumgartle, PE LC LEED AP
Electrical Engineer



Pool Consultant
Counsilman-Hunsaker

Doug Cook, AIA LEED AP
Senior Project Manager

Steve Crocker, PE
Project Engineer for Pool Design



Site Designer
Vivian Llambi &
Associates, Inc. (DBE)

Vivian Llambi, RLA
Principal-In-Charge

Kenneth O'Dea, RLA ASLA APA
Senior Landscape Architect/Planner

Jeffrey Sinnard, PE
Civil Engineer

Our design team is comprised of the following firms:

**ARCHITECTURE/FACILITY
PLANNING**



*Architect of Record & Interior
Designer*
OMNI ARCHITECTS
Michael Jacobs, AIA CID LEED
AP
212 North Upper Street
Lexington, KY 40507
P 859.252.6664



Recreation Consultant:
CANNON DESIGN
Reed Voorhees, AIA LEED AP
1100 Clark Avenue
St. Louis, MO 63102
P 314.425.8711



ENGINEERING

Pool Consultant:
COUNSILMAN-HUNSAKER
Steve Crocker, PE
10733 Sunset Office DriveSt.
Louis, MO 63127
P 314.416.2097



M/E/P Engineers:
CMTA
Tony Hans, PE RCDD LEED AP
10411 Meeting Street
Louisville, KY 40253
P 502.326.3085



Structural Engineers:
BFMJ, INC.
Peyman Jahed, PE SECB
620 East Euclid Ave., Suite 300
Lexington, KY 40502
P 859.278.5050



Landscape Architect/Civil Engineer:
**VIVIAN LLAMBI & ASSOCIATES,
INC. (DBE)**
Vivian Llambi, RLA
2312 Park Avenue
Cincinnati, OH 45206
P 513.559.9444



*Audio Visual, Information Technology
and Acoustics:*
THE SEXTANT GROUP
Mark Gills, CTS
Riverside Center for Innovation
730 River Avenue, Suite 600
Pittsburgh, PA 15212
P 412.323.8580



Cost Consultant:
**ROBERT PASS + ASSOCIATES,
INC.**
Robert G. Pass
309 E. Market Street, #302
Louisville, KY 40202
P 502.589.7632

Rooms by Building

Northern Kentucky University

0145 A. D. ALBRIGHT HEALTH CENTER

Gross Square Feet:	136,324
Building ASF:	93,752

Room	ASF	Cap	Occ	FC	Room Type	Room Description	Assignment
00104	346	0	1	05	330 Hourly Staff Office	Secretary/Shared with Kinesiology	Campus Recreation
00105	156	0	1	04	310 Professional Staff Office/Full-Time	Chairperson	Kinesiology, Health and Educational Foundations
00106	95	0	1	05	310 Professional Staff Office/Full-Time	Director/Campus Recreation	Campus Recreation
00107	95	1	1	04	320 Faculty Office/Full-Time	Faculty Office	Kinesiology, Health and Educational Foundations
00108	95	1	1	04	320 Faculty Office/Full-Time	Faculty Office	Kinesiology, Health and Educational Foundations
00109	95	1	1	01	310 Professional Staff Office/Full-Time	Coordinator/Athletic Training	Kinesiology, Health and Educational Foundations
00110	94	1	1	04	320 Faculty Office/Full-Time	Faculty Office	Kinesiology, Health and Educational Foundations
00111	96	1	1	04	320 Faculty Office/Full-Time	Faculty Office	Kinesiology, Health and Educational Foundations
00112	747	25	25	01	220 Open Laboratory	Human Performance Lab	Kinesiology, Health and Educational Foundations
00112 A	141	7	7	01	220 Open Laboratory	PC Lab (7 laptops)	Kinesiology, Health and Educational Foundations
00114	96	1	1	04	320 Faculty Office/Full-Time	Faculty Office	Kinesiology, Health and Educational Foundations
00115	96	1	0	04	320 Faculty Office/Full-Time	Faculty Office	Kinesiology, Health and Educational Foundations
00116	96	1	1	04	320 Faculty Office/Full-Time	Faculty Office/Resource Room	Kinesiology, Health and Educational Foundations
00117	210	0	10	05	351 Office Lounge/Lunchroom	Shared Lounge	Campus Recreation
00117 A	33	1	0	01	315 Office Service	Storage	Kinesiology, Health and Educational Foundations
00119	636	0	0	07	730 Central Storage	Central Storage	General Univ. Storage
00122	171	0	2	06	330 Hourly Staff Office	Staff offices (2)	Campus Recreation
00123	689	0	0	05	528 Faculty/Staff Locker Rooms	Men's Faculty/Staff Locker room	Campus Recreation
00123 B	162	0	0	05	528 Faculty/Staff Locker Rooms	Shower/Drying Area-Men's F/S Locker room	Campus Recreation
00124	452	0	0	05	528 Faculty/Staff Locker Rooms	Women's Faculty/Staff Locker room	Campus Recreation
00124 B	168	0	0	05	528 Faculty/Staff Locker Rooms	Shower/Drying Area-Women's F/S Locker room	Campus Recreation
00126 A	43	0	0	05	315 Office Service	Office Storage/Safe	Campus Recreation
00127	332	0	1	05	526 Open Fitness Area Service	Small Equipment Issue Desk/Student Employee	Campus Recreation
00129	225	0	2	05	310 Professional Staff Office/Full-Time	Assistant Director & Coordinator/Facilities (2)	Campus Recreation
00131	81	0	1	05	310 Professional Staff Office/Full-Time	Coordinator/Intramurals	Campus Recreation
00132	99	0	1	05	310 Professional Staff Office/Full-Time	Assistant Director/Programs	Campus Recreation
00133	21,913	100	100	05	525 Open Fitness Area	Main Activity Area (Basketball Courts)	Campus Recreation

Thursday, January 19, 2012

Rooms by Building

Northern Kentucky University

0145 A. D. ALBRIGHT HEALTH CENTER

Gross Square Feet:	136,324
Building ASF:	93,752

Room	ASF	Cap	Occ	FC	Room Type	Room Description	Assignment
00133 B	168	0	0	05	526	Open Fitness Area Service	Personal Train. Assess./Control Rm
00133 C	1,557	0	0	05	525	Open Fitness Area	Weight Room
00133 E	785	0	0	05	526	Open Fitness Area Service	Equipment Storage/Shared with PE
00133 F	239	0	0	05	526	Open Fitness Area Service	Storage
00134	3,048	100	100	05	525	Open Fitness Area	Fitness Room
00134 M	660	0	0	05	525	Open Fitness Area	Fitness Room Mezzanine
00140	1,988	0	0	05	527	Student Locker Rooms	Men's Student Locker room
00140 B	380	0	0	05	527	Student Locker Rooms	Shower/Drying Area-Men's Student Locker room
00141	1,431	0	0	05	527	Student Locker Rooms	Women's Student Locker room
00141 B	441	0	0	05	527	Student Locker Rooms	Shower/Drying Area-Women's Student Locker room
00142	216	0	0	05	650	Public Lounge	Student Lounges
00148	59	0	0	05	517	Health & Physical Education Service	Towel Storage
00150	5,200	30	30	05	516	Health and Physical Education	Swimming Pool
00150 A	387	0	0	05	517	Health & Physical Education Service	Pool Storage
00150 C	177	0	0	05	517	Health & Physical Education Service	Storage (upper level)
00150 D	143	0	0	05	517	Health & Physical Education Service	Aquatics Coordinator
00150 F	863	0	0	05	517	Health & Physical Education Service	Pool Area Seating (risers)
00151	473	15	15	06	220	Open Laboratory	Athletic Training Lab
00151 A	88	0	0	06	221	Open Laboratory Service	Storage Room
00152	3,140	40	40	03	516	Health and Physical Education	Multipurpose Activity Room
00152 A	797	0	0	05	525	Open Fitness Area	Racquetball Court #1
00152 B	797	0	0	05	525	Open Fitness Area	Racquetball Court #2
00152 C	797	0	0	05	525	Open Fitness Area	Racquetball Court #3
00206	351	0	1	01	330	Hourly Staff Office	Reception Area (2)
00206 A	208	0	1	04	310	Professional Staff Office/Full-Time	Chair, Advanced Nursing Studies
00206 B	210	0	1	04	330	Hourly Staff Office	Academic Specialist
00206 C	203	0	1	04	330	Hourly Staff Office	Academic Specialist

Thursday, January 19, 2012

Rooms by Building

Northern Kentucky University

0145 A. D. ALBRIGHT HEALTH CENTER

Gross Square Feet: 136,324
Building ASF: 93,752

Room	ASF	Cap	Occ	FC	Room Type	Room Description	Assignment
00206 D	263	0	1	04	310 Professional Staff Office/Full-Time	Dean	Health Professions
00206 E	222	0	12	04	350 Office Conference Room	Conference Room	Health Professions
00206 F	140	0	1	05	310 Professional Staff Office/Full-Time	Faculty Office/Coordinator NP	Health Professions
00206 G	225	1	1	04	320 Faculty Office/Full-Time	Faculty	Health Professions
00206 J	104	1	1	04	310 Professional Staff Office/Full-Time	Director RN-BSN	Health Professions
00206 K	96	0	1	04	320 Faculty Office/Full-Time	Faculty Office	Health Professions
00206 L	97	0	1	04	320 Faculty Office/Full-Time	Faculty Office	Health Professions
00206 M	116	0	0	04	320 Faculty Office/Full-Time	Faculty Office	Health Professions
00208	590	36	36	01	110 General Purpose Classroom	Level 1 Smart Classroom (Open)	Health Professions
00210	593	36	36	01	110 General Purpose Classroom	Level 2 Smart Classroom (Rad Tech only)	Kinesiology, Health and Educational Foundations
00212	587	36	36	01	110 General Purpose Classroom	Level 1 Smart Classroom (HPE, Education, Open)	Allied Health
00214	585	36	36	01	110 General Purpose Classroom	Level 1 Smart Classroom (HPE, Education, Open)	Kinesiology, Health and Educational Foundations
00216	385	23	23	01	110 General Purpose Classroom	Level 1 Smart Classroom (HPE, Education, Open)	Kinesiology, Health and Educational Foundations
00218	754	15	15	05	521 Intercollegiate Athletic Sports Service	Level 1 Smart Classroom (HPE, Education, Open)	Kinesiology, Health and Educational Foundations
00218 A	100	0	1	05	310 Professional Staff Office/Full-Time	Athletic Training Resource Lab	Intercollegiate Athletics
00218 B	152	0	1	05	310 Professional Staff Office/Full-Time	Assoc AD/Risk Mgmt	Intercollegiate Athletics
00218 C	161	0	1	05	521 Intercollegiate Athletic Sports Service	Asst Athletic Trainers	Intercollegiate Athletics
00220	187	0	0	05	650 Public Lounge	Athletic Taping/Assessment	Intercollegiate Athletics
00222 A	100	1	1	05	310 Professional Staff Office/Full-Time	Student Athlete Lounge	Intercollegiate Athletics
00222 B	100	1	1	05	310 Professional Staff Office/Full-Time	Men's Soccer Coach	Intercollegiate Athletics
00222 C	125	1	1	05	310 Professional Staff Office/Full-Time	Head Volleyball Coach	Intercollegiate Athletics
00225	207	0	0	04	332 Office Reception/Secretary	Head Baseball Coach	Intercollegiate Athletics
00225 A	101	0	0	04	320 Faculty Office/Full-Time	Waiting Room/Respiratory Care	Health Professions
00225 B	101	0	1	04	320 Faculty Office/Full-Time	Faculty office	Health Professions
00225 C	141	0	1	04	320 Faculty Office/Full-Time	Faculty Office	Health Professions
00225 D	62	0	0	04	315 Office Service	Faculty Office	Health Professions
00226	587	21	21	01	110 General Purpose Classroom	Office Storage	Health Professions
						Classroom	Health Professions

Rooms by Building

Northern Kentucky University

0145 A. D. ALBRIGHT HEALTH CENTER

Gross Square Feet: 136,324
Building ASF: 93,752

Room	ASF	Cap	Occ	FC	Room Type	Room Description	Assignment
00227	228	0	1	04	330	Hourly Staff Office	Academic Coordinator
00227 A	61	0	0	04	315	Office Service	Office Storage
00227 B	141	0	1	04	320	Faculty Office/Full-Time	Faculty Office
00227 C	97	0	1	04	320	Faculty Office/Full-Time	Faculty Office
00227 D	97	0	1	04	320	Faculty Office/Full-Time	Faculty Office
00227 E	97	0	1	04	320	Faculty Office/Full-Time	Faculty Office
00228	478	10	10	01	220	Open Laboratory	Respiratory Therapy Lab
00232	220	0	0	04	310	Professional Staff Office/Full-Time	Chair's Office
00234	395	22	22	01	220	Open Laboratory	Viewing Room
00235	153	0	0	01	221	Open Laboratory Service	Storage Room
00236	218	0	2	04	320	Faculty Office/Full-Time	Library/Resource Room
00237	120	0	0	04	351	Office Lounge/Lunchroom	Faculty/Staff Kitchen/Lab Prep Area
00238	380	5	5	01	220	Open Laboratory	Radiographic Lab #2
00239	182	4	4	01	220	Open Laboratory	Radiographic Lab #3
00241	139	0	0	01	225	Research Laboratory/Nonclass	Dark Room
00242	571	5	5	01	220	Open Laboratory	Radiographic Lab #1
00243	95	1	0	04	320	Faculty Office/Full-Time	Nursing Faculty
00244	95	0	2	04	320	Faculty Office/Full-Time	Nursing Faculty
00245	100	0	0	04	320	Faculty Office/Full-Time	Faculty Office
00246	100	0	0	04	320	Faculty Office/Full-Time	Faculty Office
00250	224	0	1	05	330	Hourly Staff Office	Asst Bus Manager
00250 A	136	0	1	05	310	Professional Staff Office/Full-Time	AD's Second Office
00250 B	101	0	1	05	310	Professional Staff Office/Full-Time	Business Mgr/Financial Coord
00250 C	100	0	1	05	330	Hourly Staff Office	Work Study
00251	95	0	0	05	331	Office File/Mail/Workroom	Athletics Resource Room (Copier, etc.)
00252	101	0	1	05	310	Professional Staff Office/Full-Time	Women's Softball Coach
00253	205	0	3	05	410	Study Room	3 PC's & Files

Rooms by Building

Northern Kentucky University

0145 A. D. ALBRIGHT HEALTH CENTER

Gross Square Feet: 136,324
Building ASF: 93,752

Room	ASF	Cap	Occ	FC	Room Type	Room Description	Assignment
00254	94	0	2	05	310 Professional Staff Office/Full-Time	Golf Coach/Asst Softball	Intercollegiate Athletics
00255	95	0	5	05	310 Professional Staff Office/Full-Time	Sports Information Director	Intercollegiate Athletics
00256	104	0	1	05	310 Professional Staff Office/Full-Time	Women's Soccer Coach	Intercollegiate Athletics
00258	85	0	1	05	310 Professional Staff Office/Full-Time	Assist AD for Compliance	Intercollegiate Athletics
00259	84	0	1	05	310 Professional Staff Office/Full-Time	Men's & Women's Tennis Coach/Asst VB	Intercollegiate Athletics
00262	63	0	0	05	315 Office Service	Office Storage	Intercollegiate Athletics
00263	86	0	1	05	310 Professional Staff Office/Full-Time	Assistant Men's Soccer/Asst. Softball	Intercollegiate Athletics
00264	85	0	1	05	310 Professional Staff Office/Full-Time	Facility Coordinator/Asst Baseball Coach	Intercollegiate Athletics
00265	135	0	0	05	524 Officials Locker Room	Officials Locker Room (Men)	Intercollegiate Athletics
00266	136	0	0	05	524 Officials Locker Room	Officials Locker Room (Women)	Intercollegiate Athletics
00267	192	0	0	05	521 Intercollegiate Athletic Sports Service	Ice Machine/Storage	Intercollegiate Athletics
00267 A	49	0	0	05	521 Intercollegiate Athletic Sports Service	Medical Storage	Intercollegiate Athletics
00268	71	0	0	05	310 Professional Staff Office/Full-Time	Assistant Athletic Trainer	Intercollegiate Athletics
00269	138	0	2	05	310 Professional Staff Office/Full-Time	Assistant Athletic Trainer	Intercollegiate Athletics
00270	257	8	8	05	225 Research Laboratory/Nonclass	Motor Control Lab	Kinesiology, Health and Educational Foundations
00273	696	0	0	05	522 Intercollegiate Athletic Locker Rooms	Athletes Locker Room (Women)	Intercollegiate Athletics
00273 A	163	0	0	05	522 Intercollegiate Athletic Locker Rooms	Locker Room Restroom (Women)	Intercollegiate Athletics
00273 B	280	0	0	05	522 Intercollegiate Athletic Locker Rooms	Shower/Drying Area-Women Athletes	Intercollegiate Athletics
00275	705	0	0	05	522 Intercollegiate Athletic Locker Rooms	Athletes Locker Room (Men)	Intercollegiate Athletics
00275 A	163	0	0	05	522 Intercollegiate Athletic Locker Rooms	Locker Room Restroom (Men)	Intercollegiate Athletics
00275 B	285	0	0	05	522 Intercollegiate Athletic Locker Rooms	Shower/Drying Area-Men Athletes	Intercollegiate Athletics
00294	11,977	0	0	05	516 Health and Physical Education	Indoor Running Track	Campus Recreation
00300 A	375	0	0	05	650 Public Lounge	Student Study Area (tiered seating by stairwell)	Student Lounges
00303	73	0	2	04	330 Hourly Staff Office	Secretary/Student Employee	Health Professions
00303 A	158	0	1	04	310 Professional Staff Office/Full-Time	Director, BSN	Health Professions
00303 B	97	0	1	04	330 Hourly Staff Office	Academic Specialist	Health Professions
00303 C	97	0	0	04	333 Office Library/Reference Room	File Room	Health Professions

Rooms by Building

Northern Kentucky University

0145 A. D. ALBRIGHT HEALTH CENTER

Gross Square Feet: 136,324
Building ASF: 93,752

Room	ASF	Cap	Occ	FC	Room Type	Room Description	Assignment
00303 D	26	0	0	04	315 Office Service	Office Storage	Health Professions
00303 E	483	0	2	06	330 Hourly Staff Office	Secretary/Student Employee	Health Professions
00310	603	24	24	01	220 Open Laboratory	Debriefing - Simulation Lab	Health Professions
00311	91	0	0	04	315 Office Service	Storage - Files	Health Professions
00314	1,218	20	20	01	220 Open Laboratory	Human Simulation Lab	Health Professions
00315	555	16	16	01	210 Class Laboratory	Nursing Assessment Lab	Health Professions
00318	1,046	53	53	01	110 General Purpose Classroom	Level 1 Smart Classroom (Nursing, Open)	Health Professions
00319	109	0	0	04	320 Faculty Office/Full-Time	Faculty Office	Nursing
00321	109	0	0	04	310 Professional Staff Office/Full-Time	Advisor Office	Health Professions
00322	114	0	1	04	320 Faculty Office/Full-Time	Faculty Office	Health Professions
00323	108	0	1	04	320 Faculty Office/Full-Time	Faculty Office	Health Professions
00324	97	0	1	04	320 Faculty Office/Full-Time	Faculty Office	Health Professions
00325	108	0	1	04	320 Faculty Office/Full-Time	Faculty Office	Health Professions
00326	97	0	1	04	320 Faculty Office/Full-Time	Faculty Office	Health Professions
00327	108	0	1	04	320 Faculty Office/Full-Time	Faculty Office	Health Professions
00328	97	0	1	04	320 Faculty Office/Full-Time	Faculty Office	Health Professions
00329	108	0	1	04	320 Faculty Office/Full-Time	Faculty Office	Health Professions
00330	97	0	1	04	320 Faculty Office/Full-Time	Faculty Office	Health Professions
00331	109	0	1	04	320 Faculty Office/Full-Time	Faculty Office	Health Professions
00332	97	0	1	04	320 Faculty Office/Full-Time	Faculty Office	Health Professions
00334	307	0	0	04	351 Office Lounge/Lunchroom	Faculty/Staff Lounge	Health Professions
00335	109	0	1	04	320 Faculty Office/Full-Time	Faculty Office (on loan to athletics)	Health Professions
00337	108	0	5	04	320 Faculty Office/Full-Time	Faculty Office	Health Professions
00338	97	0	1	04	320 Faculty Office/Full-Time	Faculty Office	Health Professions
00339	109	0	5	04	320 Faculty Office/Full-Time	Faculty Office	Health Professions
00340	97	0	1	04	320 Faculty Office/Full-Time	Faculty Office	Health Professions
00341	109	0	5	04	320 Faculty Office/Full-Time	Faculty Office	Health Professions

Rooms by Building

Northern Kentucky University

0145 A. D. ALBRIGHT HEALTH CENTER

Gross Square Feet: 136,324
Building ASF: 93,752

Room	ASF	Cap	Occ	FC	Room Type	Room Description	Assignment
00342	98	0	1	04	320 Faculty Office/Full-Time	Faculty Office	Health Professions
00343	109	0	1	04	320 Faculty Office/Full-Time	Faculty Office	Health Professions
00345	48	0	0	04	315 Office Service	Office Storage	Health Professions
00346	97	0	1	04	310 Professional Staff Office/Full-Time	Director of ABSN	Health Professions
00347	97	0	1	04	320 Faculty Office/Full-Time	Faculty Office	Health Professions
00348	122	0	1	04	320 Faculty Office/Full-Time	Faculty Office	Health Professions
00349	85	0	0	01	221 Open Laboratory Service	Storage	Health Professions
00349 A	58	0	0	01	221 Open Laboratory Service	Storage	Health Professions
00350	894	28	28	01	220 Open Laboratory	COHP PC Lab	Health Professions
00352	714	24	24	01	210 Class Laboratory	BSN Skills Lab	Health Professions
00352 A	38	0	0	01	221 Open Laboratory Service	Storage	Health Professions
00353	662	35	35	01	110 General Purpose Classroom	Classroom	Health Professions
00354	117	0	1	04	335 Grad or Teaching Assistant Office	Graduate Student/Student Org Office	Health Professions
00355	87	0	5	04	320 Faculty Office/Full-Time	Faculty Office	Health Professions
00356	102	0	1	04	320 Faculty Office/Full-Time	Faculty Office	Health Professions
00357	102	0	3	04	320 Faculty Office/Full-Time	Faculty Office	Health Professions
00358	102	0	1	04	320 Faculty Office/Full-Time	Faculty Office	Health Professions
00359	102	0	1	04	320 Faculty Office/Full-Time	Faculty Office	Health Professions
00360	298	0	0	04	650 Public Lounge	Student Lounge	Health Professions
00361	266	12	12	01	350 Office Conference Room	Conference Room	Health Professions
00362	127	1	1	04	320 Faculty Office/Full-Time	Office	Health Professions
00363	22	0	0	0	315 Office Service	Storage	Health Professions
00364	120	1	1	04	320 Faculty Office/Full-Time	Office	Health Professions
00367	120	1	1	04	320 Faculty Office/Full-Time	Office	Health Professions
00369	120	1	1	04	320 Faculty Office/Full-Time	Office	Health Professions

Building Totals: A. D. ALBRIGHT HEALTH CENTER

ASF: 91,844 Capacity: 805 Occupants: 930

Thursday, January 19, 2012

Rooms by Building

Northern Kentucky University

0145 A. D. ALBRIGHT HEALTH CENTER

Gross Square Feet:	136,324
Building ASF:	93,752

Room	ASF	Cap	Occ	FC	Room Type	Room Description	Assignment
Grand Total:	ASF: 91,844				Capacity: 805	Occupants: 930	

Campus Recreation Center DRAFT Space Program

Space	Occupants	QTY	Existing Room #'s	Existing SF	Proposed NEW QTY	Proposed NEW SF each	Proposed TOTAL SF	In Current Project	IN a FUTURE Project
-------	-----------	-----	-------------------	-------------	------------------	----------------------	-------------------	--------------------	---------------------

Kinesiology

Chair	1 + visitors	1	HC 105		1	210	210	210	
Academic Asst	1	1			1	125	125	125	
Reception Area	2 + visitors 1 ea + 2 visitors	1	HC 104 (shared)		1	225	225	225	
Full-time Faculty		8			10	125	1,250	1250	
Part-time Faculty		1			1	125	125	125	
Storage/Files/Workroom	n/a	1			1	150	150	150	
Kitchenette/Lounge	n/a	1	HC 117 (shared)		1	200	200	200	
Conference Room	15	1	HC 315		1	400	400	400	
Subtotal							2,685	2685	

Classrooms and Labs - Kinesiology

Classrooms	35		HC 208, 212, 214, 216		3	650	1,950	n/c	
Seminar Room	24				1	480	480		480
Human Performance Lab (larger than existing)					1	950	950	n/c	
Hydrostatic Tank Area			HC 112		1	150	150		150
Shower Room/RR					1	110	110		110
Athletic Training Lab			HC 151		1	1,200	1,200		1,200
Biomechanics Lab					1	500	500		500
Motion Lab					1	1,000	1,000		1,000
Storage (near labs)					1	450	450		450
Storage (near activity spaces-PE)			HC 133E (1/2)				400		400
Subtotal							7,190		4,290

Campus Recreation Center DRAFT Space Program

Space	Occupants	QTY	Existing Room #'s	Existing SF	Proposed NEW Qty	Proposed NEW SF each	Proposed TOTAL SF	In Current Project	IN a FUTURE Project
-------	-----------	-----	-------------------	-------------	------------------	----------------------	-------------------	--------------------	---------------------

Campus Recreation

NOTE: a number of the positions included below are new

Reception Area	2 visitors	1	HC 104 (shared)		1	225	225	225	
Membership Services Coord/service window	1 + stud wker	1	HC 127		1	250	250	250	
Director	1 + visitors	1	HC 106		1	175	175	175	
Asso Directors	1 + visitors	2			2	150	300	300	
Asst Directors	1 + visitors	5	1 - HC 129 (shared)		5	140	700	700	
			1 - HC 132 (shared)						
Admin Asst	1	1			1	125	125	125	
Business Manager	1 + visitor	1	HC 129 (shared)		1	125	125	125	
Coordinators		3	HC 131 (Intra. Coord & GA)		3	125	375	375	
Graduate Assistants	6		HC 129 & HC 132 (shared)		6	80	480	480	
Student Employee Check-in	95				1	200	200	200	
Facility Fitness employees					1	225	225	225	
Aquatics Employees Check-in/personal storage					1	325	325	325	
Intramurals Staff Check-in/personal storage					1	170	170	170	
Staff Lounge/Kitchen		1			1	210	210	210	
Storage/Files	n/a	1			1	140	140	140	
Workroom					1	250	250	250	
Small Conference Room	8-10	1			1	325	325	325	
Large Conference Room	25-30	1			1	500	500	500	
Personal Trainer Assessment Room					1	200	200	200	
Subtotal							5,300	5,300	

Campus Recreation Center DRAFT Space Program

Space	Occupants	QTY	Existing Room #'s	Existing SF	Proposed NEW Qty	Proposed NEW SF each	Proposed TOTAL SF	In Current Project	IN a FUTURE Project
-------	-----------	-----	-------------------	-------------	------------------	----------------------	-------------------	--------------------	---------------------

Existing Locker Rooms - Health Center

Female - Student Locker Room			HC 141	2,145		1,000	3,145	3,145	
Male - Student Locker Room			HC 140	2,563		1,007	3,570	3,570	
Unisex Locker Room					2	140	280	280	
Female - F/S Locker Room			HC 124	876		1,124	2,000	2,000	
Male - F/S Locker Room			HC 123	1,083		917	2,000	2,000	
Subtotal				5,584		4,188	10,995	10,995	

Existing Activity Spaces - Health Center

Pool			HC 150	6,829			6,829	TBD	
New Pool (16 lanes, 25 yards)						14,000	14,000	TBD	
Racquetball Courts (3)			HC 152 A-C	2,391			2,391	TBD	
Multipurpose Room			HC 152	3,140	2 @ 2,500 each	5,000	8,140	TBD	
Free Weights Room			HC 134	3,048		12,735	18,000	TBD	
Fitness Equipment Room			HC 133C	1,557				TBD	
Fitness Eq. Mezzanine			HC 134M	660				TBD	
Main Activity Area			HC 133	21,913			21,913	TBD	
Track			HC 294	11,977			11,977	TBD	
Sauna (NOT functioning)			HC 147	95	1	200	300	TBD	
Subtotal				51,610		31,935	83,550	TBD	

NEW Activity Spaces

Climbing Wall (incl control desk/storage)					1	1,000	1,000	TBD	
3-court basketball area					1	21,900	21,900	TBD	
Indoor Turf Field - 182' x 85'						16,000	16,000	TBD	
Subtotal						38,900	38,900	TBD	

Campus Recreation Center DRAFT Space Program

Space	Occupants	QTY	Existing Room #'s	Existing SF	Proposed NEW Qty	Proposed NEW SF each	Proposed TOTAL SF	In Current Project	IN a FUTURE Project
-------	-----------	-----	-------------------	-------------	------------------	----------------------	-------------------	--------------------	---------------------

Support Spaces - Campus Recreation

Admission Counter (entry-exit separate)			HC 127		1	200	200	200	
Small Equipment Issue/Laundry			HC 127	332	exp	268	600	600	
Storage for Outdoor Adventure					1	4,800	4,800	4,800	
Juice Bar/Lounge/TV's					1	1,000	1,000	1,000	
Lounge/Hangout Spaces			HC 142	216		784	1,000	1,000	
Misc Storage Areas				1,600		2,400	4,000	4,000	
Subtotal				2,148		9,452	11,600	11,600	

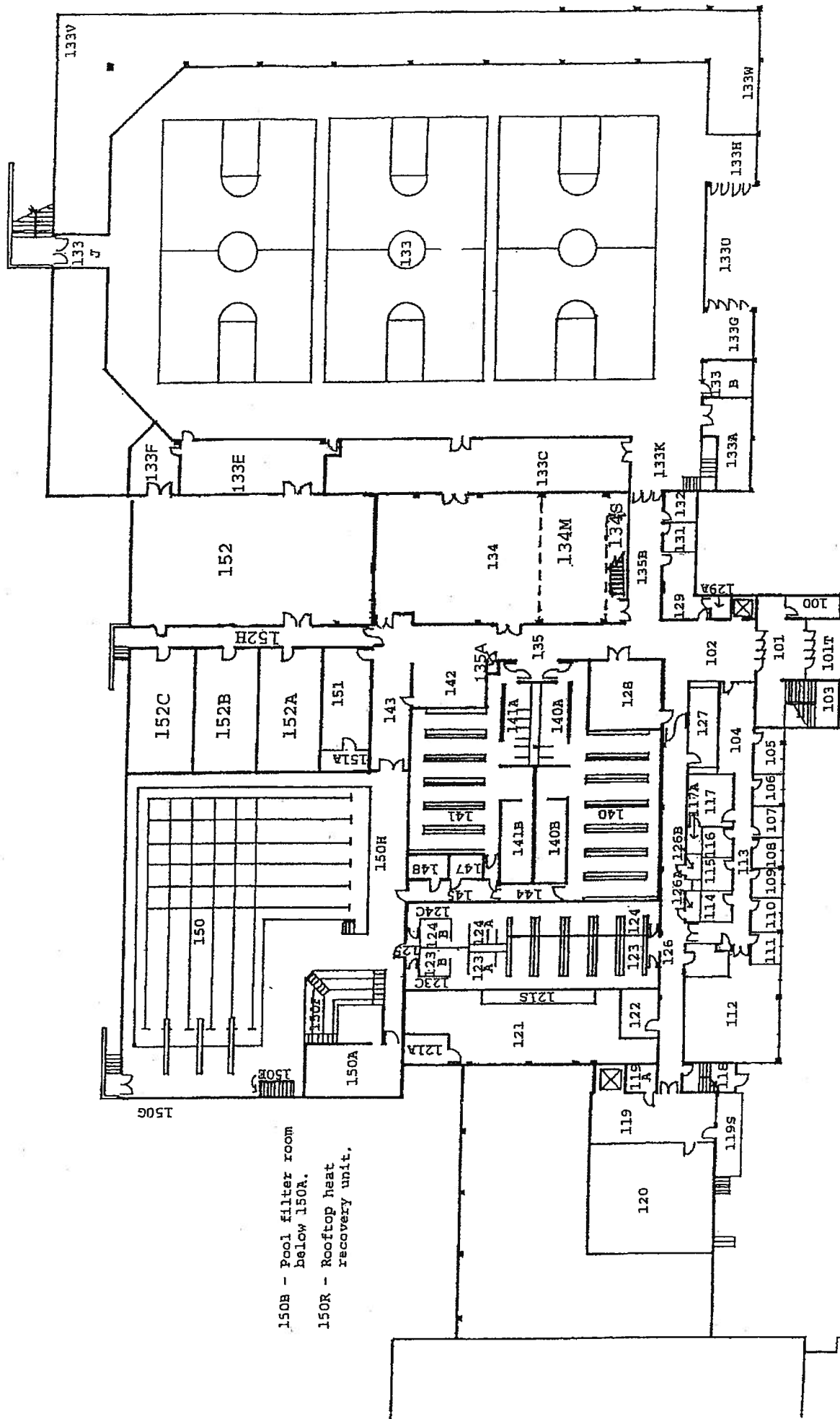
Building Operations

Janitor's Closets (2-3 new)		2			2	110	220	220	
Unisex Restroom					2	120	240	240	
Building Supplies (TP, floor care eq., cleaning supplies, etc.)			HC 119				ex	ex	
Note: create a Bldg Supplies storage rm within 119, of about 180 SF, to provide secure storage.									
Building Storage							500	500	
Subtotal						230	960	960	
Total Assignable Square Feet							161,180		
Total Gross Square Feet							278,525		
						Efficiency Factor	61%		

Ex. ALBRIGHT Health Center ASF							93,777		
Ex. ALBRIGHT Health Center GSF							136,324		
						Efficiency Factor	68%		

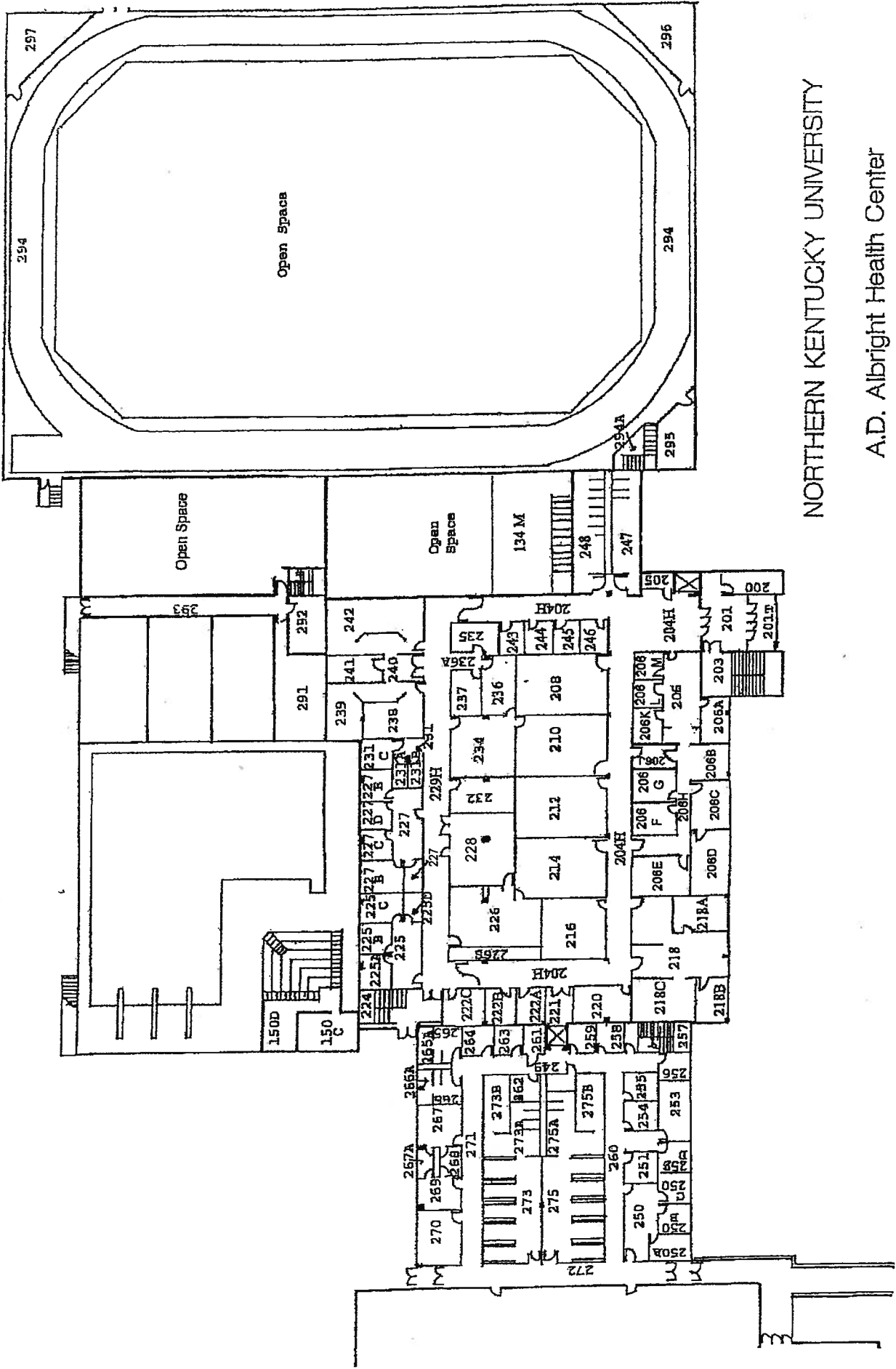
PROJECT Budget to Include:

- 1. Two lighted, artificial turf Intramural Fields
- 2. Intramural Field Building at 48' x 40' GSF = 1,920 GSF
- 3. Parking to support activity at Intramural Fields, at least 100 spaces



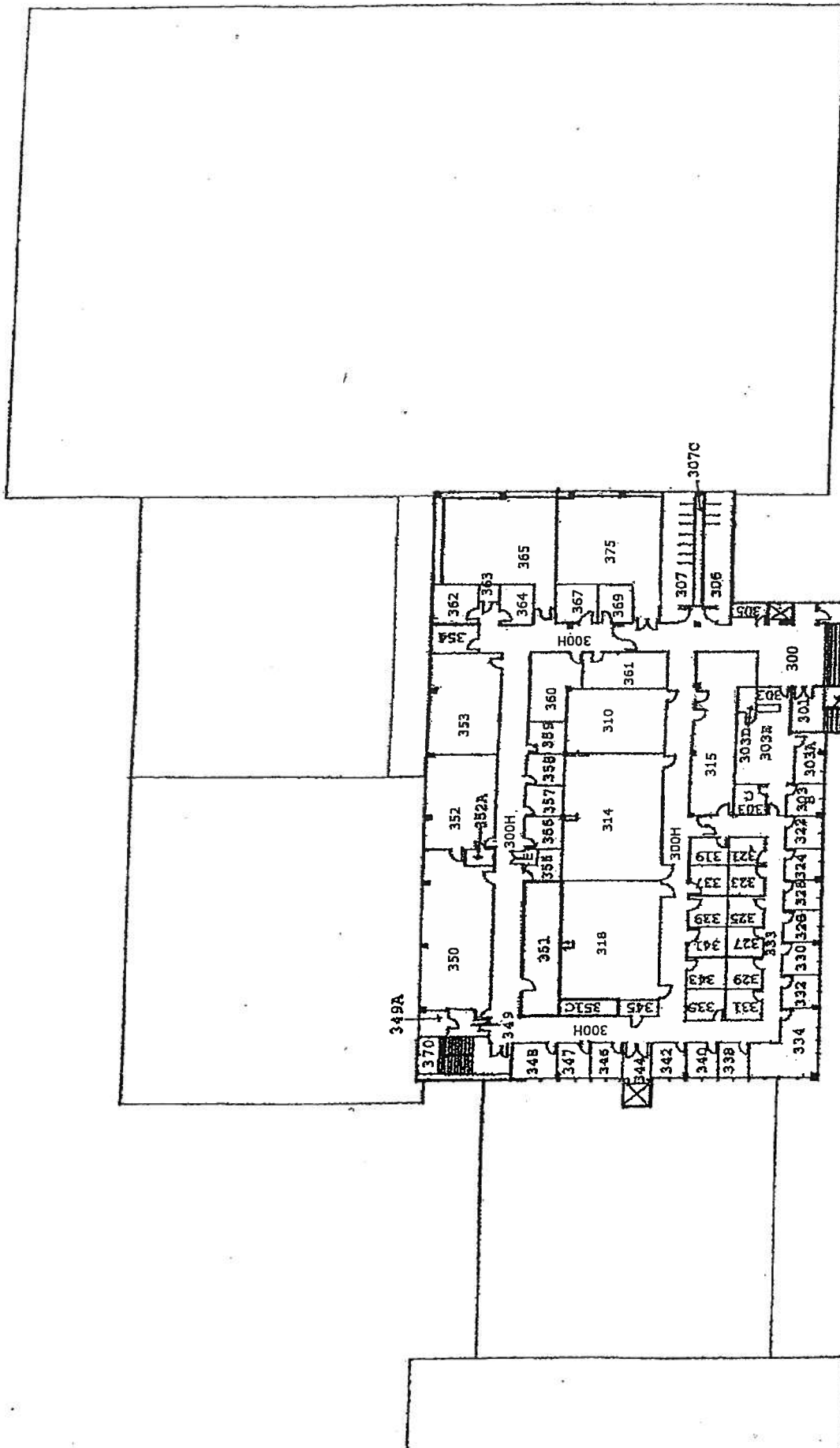
NORTHERN KENTUCKY UNIVERSITY

A.D. Albright Health Center
First Floor



NORTHERN KENTUCKY UNIVERSITY

A.D. Albright Health Center
Second Floor



NORTHERN KENTUCKY UNIVERSITY

A.D. Albright Health Center
Third Floor